

# FOR LEASE







6767 S Macadam Ave  
Portland, OR 97219

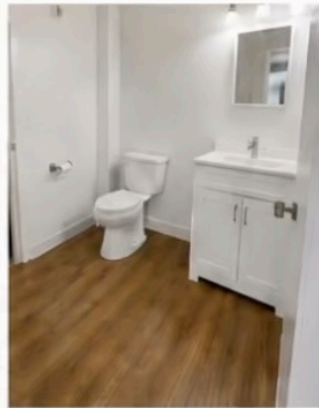


**3,500 SQ FT**  
FLEX / WAREHOUSE SPACE



## PROPERTY FEATURES

-  3,500 Sq Ft Flex / Warehouse Space
-  Large Grade-Level Roll-Up Door
-  High Ceilings with Modern LED Lighting
-  3-Phase Power
-  Prime Location in the Heart of Portland
-  On-Site Parking & Easy Access



## EXCELLENT LOCATION

Conveniently located just minutes from I-5, downtown Portland, and Lake Oswego.



Easy Access to I-5



Minutes to Downtown



Close to Lake Oswego



## CONTACT

PACIFIC PARK MANAGEMENT



Pierre Yasavolian  
503-704-4240

Spacious. Modern. Move-In Ready.