

Office Space for Lease

MULTIPLE SUITES AVAILABLE | PRIME LAKE UNION LOCATION
1607 DEXTER AVE N, SEATTLE, WA 98109



Building Highlights

Newly Renovated, Move-in Ready Office Space

Well-Maintained Property With Onsite Management

Positioned Between Mercer Street, and Aurora Avenue
for Convenient Access

Parking Stalls Available – Inquire About Rates

Location Highlights

Excellent Visibility Near Lake Union Waterfront

Surrounded by Cafés, Fitness Studios, and Creative
Offices

5-Minute Walk to Transit on Westlake Ave

Quick Access to South Lake Union, Fremont, and
Downtown

FOR MORE INFO
CONTACT

JACK DEANE
206.707.1315
jdeane@orioncp.com

BOJIDAR GABROVSKI
847.275.8474
bgabrovski@orioncp.com

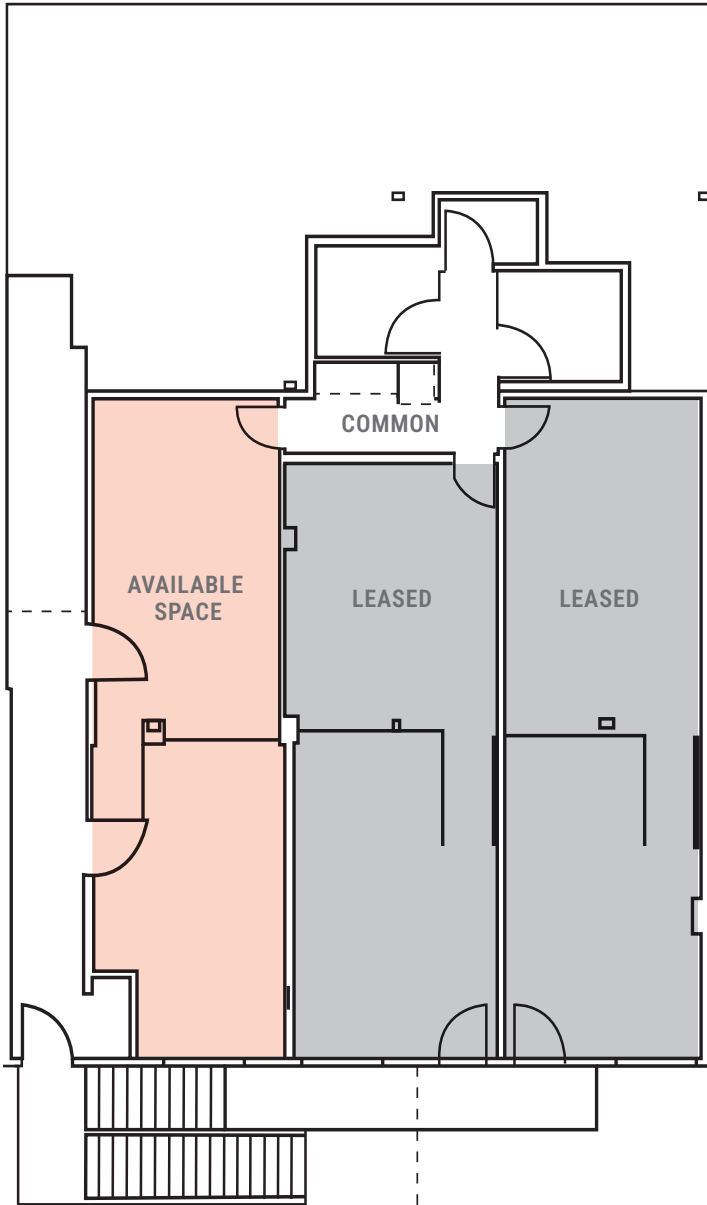
1218 Third Avenue
Suite 2200
Seattle, WA 98101

www.orioncp.com

ORION
COMMERCIAL PARTNERS

Office Space for Lease

MULTIPLE SUITES AVAILABLE | PRIME LAKE UNION LOCATION
1607 DEXTER AVE N, SEATTLE, WA 98109



Space Highlights



FLOOR: FIRST

AVAILABLE SPACE: 527 SF

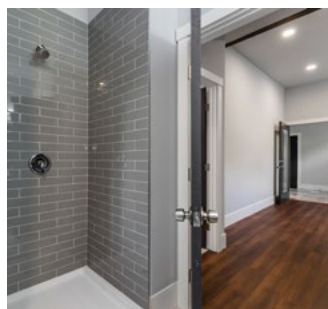
Lease Rate: \$18.00/SF/YR NNN

Estimated NNN: \$8.23/SF/YR

Private Entry

Ideal for Office or Service-based Businesses

The information contained herein was obtained from sources believed reliable; however, ORION Commercial Partners LLC makes no guarantees, warranties or representations as to the completeness or accuracy thereof. The presentation of this property is submitted subject to errors, omissions, change of price or conditions prior to sale or lease, or withdrawal without notice.



FOR MORE INFO
CONTACT

JACK DEANE
206.707.1315
jdeane@orioncp.com

BOJIDAR GABROVSKI
847.275.8474
bgabrovski@orioncp.com

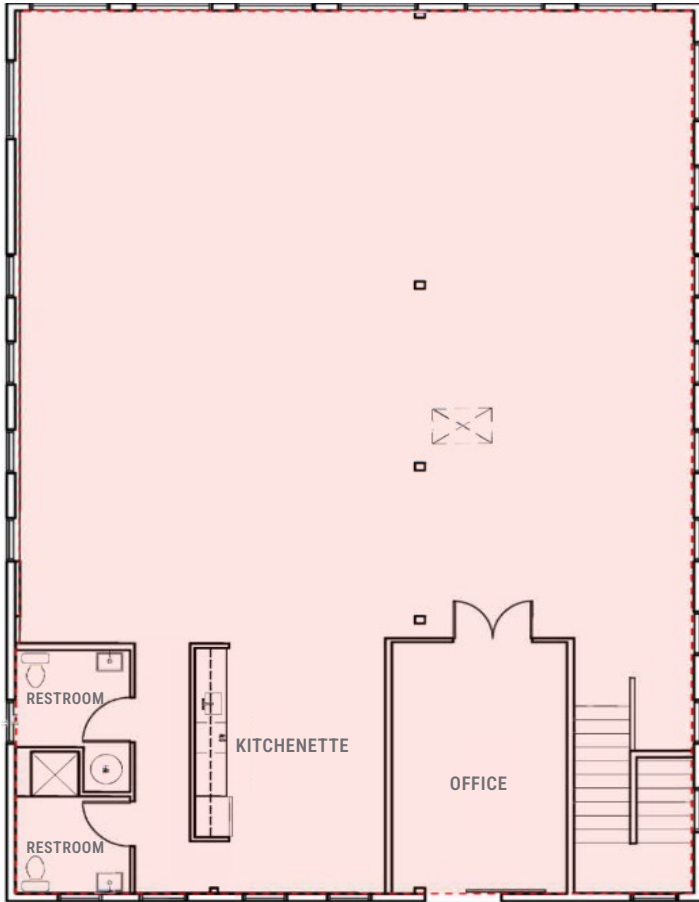
1218 Third Avenue
Suite 2200
Seattle, WA 98101

www.orioncp.com

ORION
COMMERCIAL PARTNERS

Office Space for Lease

MULTIPLE SUITES AVAILABLE | PRIME LAKE UNION LOCATION
1607 DEXTER AVE N, SEATTLE, WA 98109



Space Highlights



FLOOR: TOP

AVAILABLE SPACE: 2,747 SF

Lease Rate: \$20.00/SF/YR NNN

Estimated NNN: \$8.23/SF/YR

Full Floor Suite

Turn Key Condition

Conference Room, Private Showers, and Large Kitchenette

The information contained herein was obtained from sources believed reliable; however, ORION Commercial Partners LLC makes no guarantees, warranties or representations as to the completeness or accuracy thereof. The presentation of this property is submitted subject to errors, omissions, change of price or conditions prior to sale or lease, or withdrawal without notice.



FOR MORE INFO
CONTACT

JACK DEANE
206.707.1315
jdeane@orioncp.com

BOJIDAR GABROVSKI
847.275.8474
bgabrovski@orioncp.com

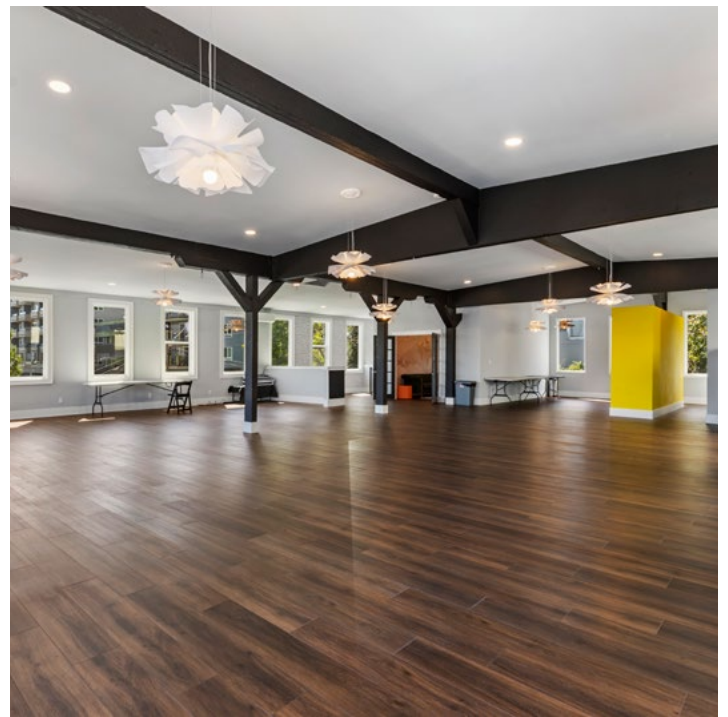
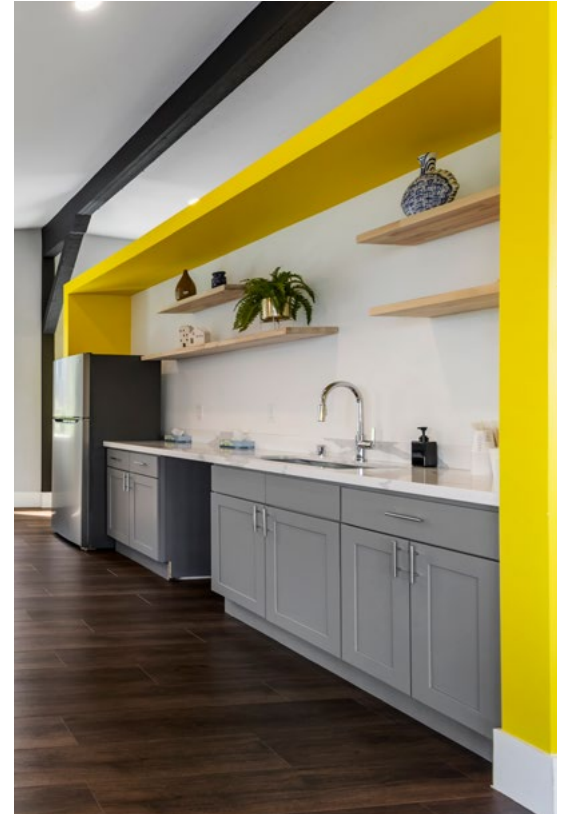
1218 Third Avenue
Suite 2200
Seattle, WA 98101

www.orioncp.com

ORION
COMMERCIAL PARTNERS

Office Space for Lease

MULTIPLE SUITES AVAILABLE | PRIME LAKE UNION LOCATION
1607 DEXTER AVE N, SEATTLE, WA 98109



FOR MORE INFO
CONTACT

JACK DEANE
206.707.1315
jdeane@orioncp.com

BOJIDAR GABROVSKI
847.275.8474
bgabrovski@orioncp.com

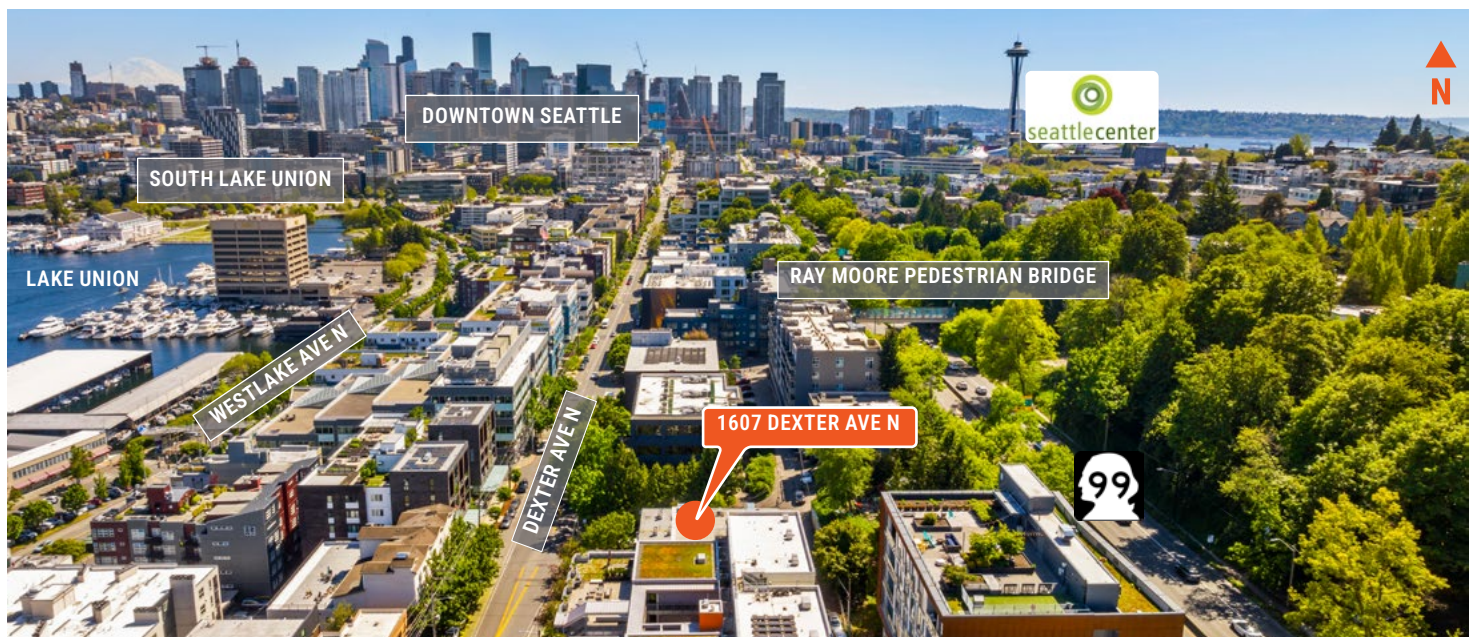
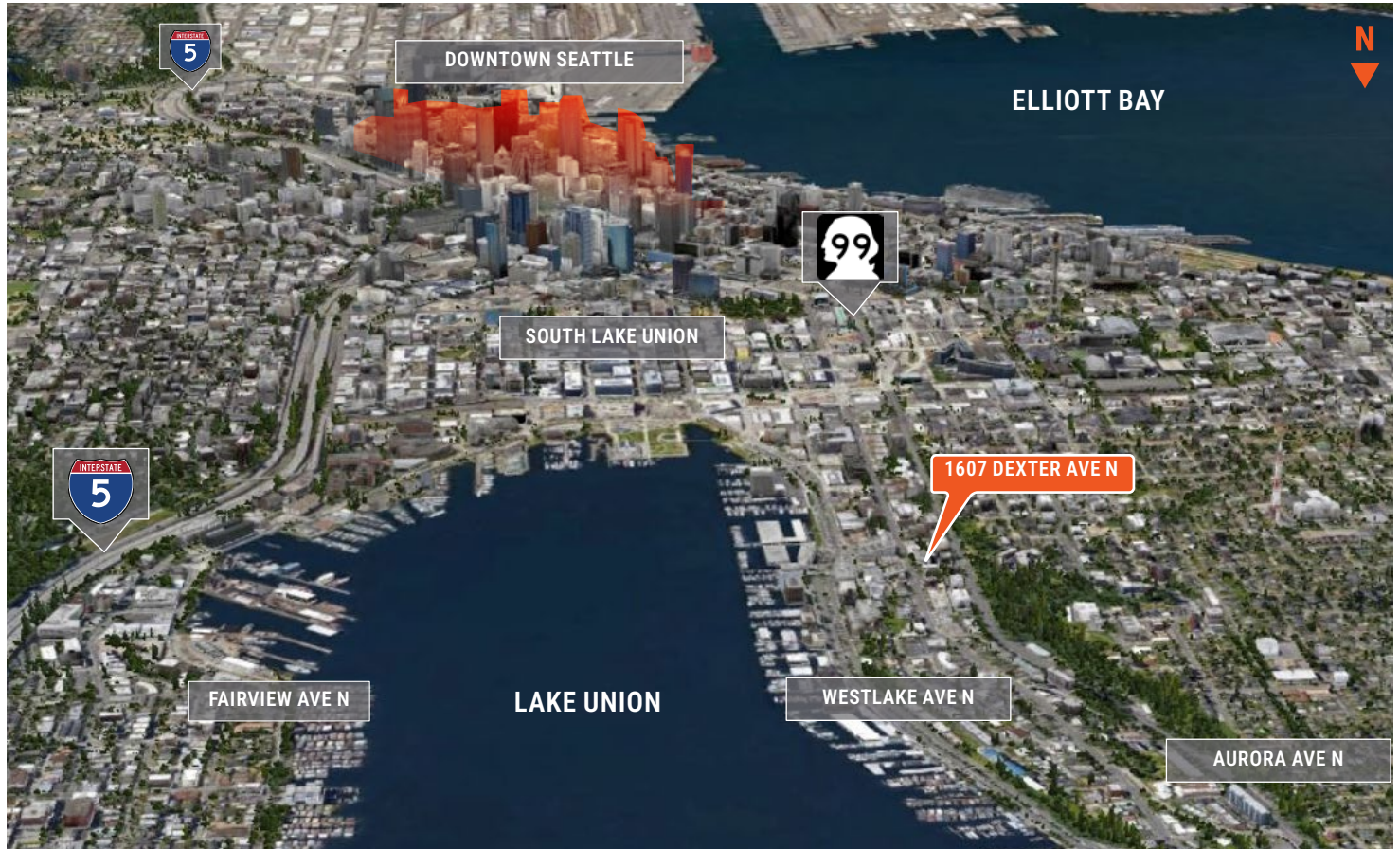
1218 Third Avenue
Suite 2200
Seattle, WA 98101

www.orioncp.com

ORION
COMMERCIAL PARTNERS

Office Space for Lease

MULTIPLE SUITES AVAILABLE | PRIME LAKE UNION LOCATION
1607 DEXTER AVE N, SEATTLE, WA 98109



FOR MORE INFO
CONTACT

JACK DEANE
206.707.1315
jdeane@orioncp.com

BOJIDAR GABROVSKI
847.275.8474
bgabrovski@orioncp.com

1218 Third Avenue
Suite 2200
Seattle, WA 98101

www.orioncp.com

ORION
COMMERCIAL PARTNERS