

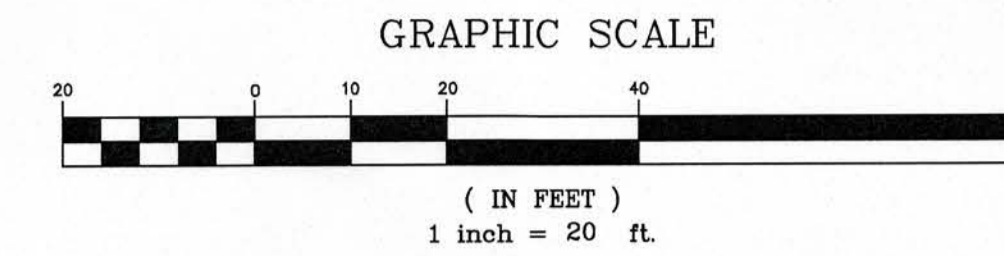
POINT OF COMMENCEMENT

INTERSECTION OF EAST RIGHT OF WAY LINE OF MURRELL ROAD AND SOUTH RIGHT OF WAY LINE OF VERA BOULEVARD

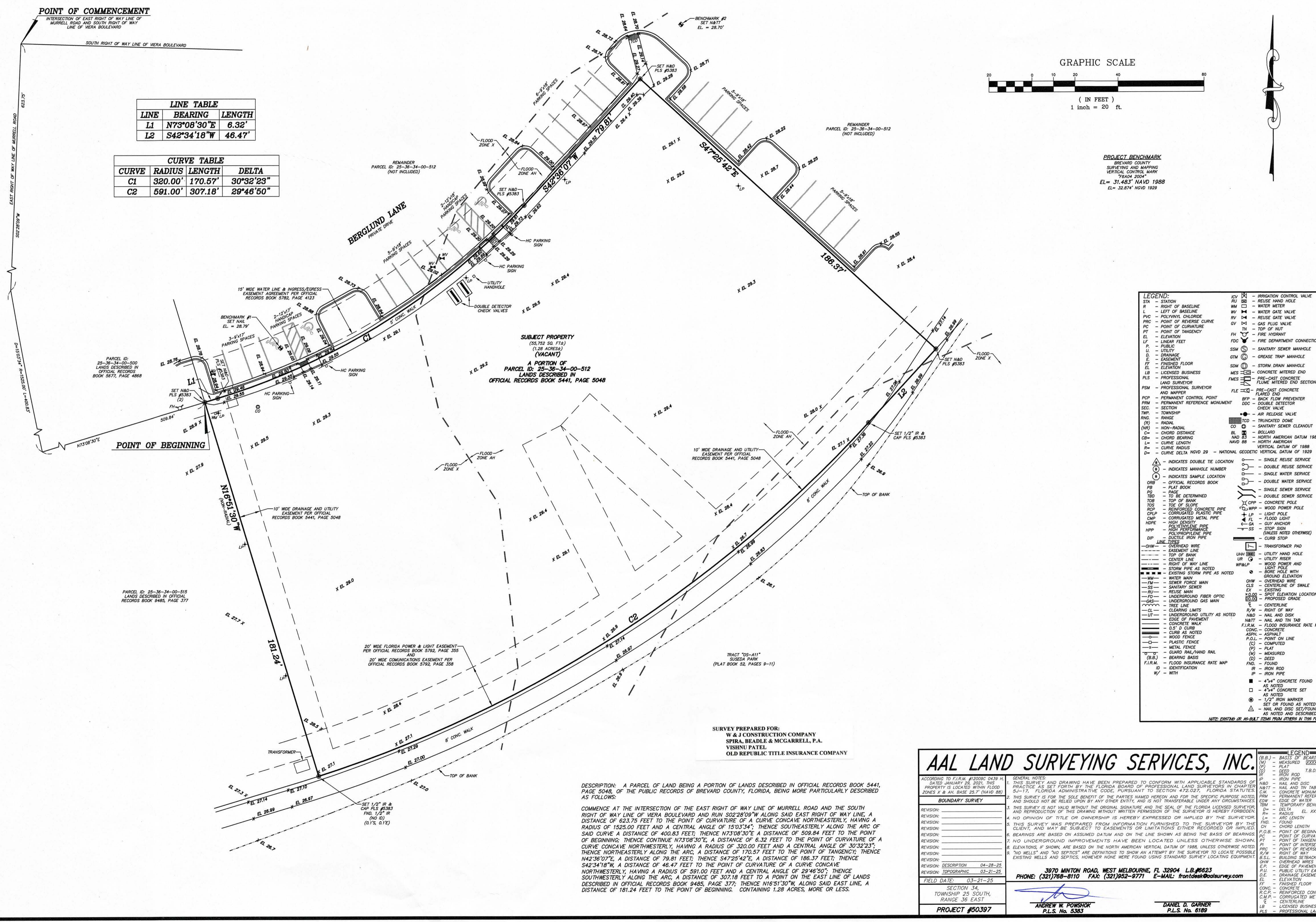
SOUTH RIGHT OF WAY LINE OF VERA BOULEVARD

LINE	BEARING	LENGTH
L1	N73°08'30"E	6.32'
L2	S42°34'18"W	46.47'

CURVE	RADIUS	LENGTH	DELTA
C1	320.00'	170.57'	30°32'23"
C2	591.00'	307.18'	29°46'50"



PROJECT BENCHMARK
BREVARD COUNTY
SURVEYING AND MAPPING
VERTICAL CONTROL MARK
"6804 2024"
EL = 31.483' NAVD 1988
EL = 32.874' NGVD 1929



LEGEND:

IRV	IRIGATION CONTROL VALVE	STN	STATION
R	RIGHT OF BASELINE	WM	WATER METER
L	LEFT OF BASELINE	WV	WATER GATE VALVE
PVC	POLYVINYL CHLORIDE	RV	REVERSE GATE VALVE
PRC	POINT OF REVERSE CURVE	GV	GAS PLUG VALVE
PC	POINT OF CURVATURE	TN	TOP OF NUT
PT	POINT OF TANGENCY	FD	FIRE HYDRANT
EL	ELEVATION	FDC	FIRE DEPARTMENT CONNECTION
LF	LINEAR FEET	SSM	SANITARY SEWER MANHOLE
P	PUBLIC	GTM	GREASE TRAP MANHOLE
D	DRAINAGE	SDM	STORM DRAIN MANHOLE
FT	FINISHED FLOOR	CONC	CONCRETE
EL	ELEVATION	FLM	FLOODED FLOOR
PLS	PROFESSIONAL LAND SURVEYOR	PLS	PROFESSIONAL LAND SURVEYOR
PSM	PROFESSIONAL SURVEYOR AND MAPPER	FLC	PRE-CAST CONCRETE FLARED END
PCP	PERMANENT CONTROL POINT	BFP	BACK FLOW PREVENTER
PRM	PERMANENT REFERENCE MONUMENT	DDC	DOUBLE DETECTOR CHECK VALVE
SEC	SECTION	AV	AIR RELEASE VALVE
TWP	TOWNSHIP	TCD	TRUNCATED DOME
RNG	RANGE	NR	NON-RADIAL
RD	RADIAL	CD	CHORD DISTANCE
OR	OFFICIAL RECORDS BOOK	CB	CHORD BEARING
FB	FLAT BOOK	L	CURVE LENGTH
PG	PAGE	R	CURVE RADIUS
TD	TOP OF DETERMINED	D	CURVE DELTA
TOB	TOP OF BANK		
TS	TOP OF SLOPE		
RCP	REINFORCED CONCRETE PIPE		
CRP	CORRUGATED PLASTIC PIPE		
CMP	CORRUGATED METAL PIPE		
HDPE	HIGH DENSITY POLYETHYLENE PIPE		
HPP	HIGH PRESSURE POLYPROPYLENE PIPE		
DIP	DUCTILE IRON PIPE		
OW	OVERHEAD WIRE		
EL	EASEMENT LINE		
CL	CENTER LINE		
RL	RIGHT OF WAY LINE		
SL	SEWER FORCE MAIN		
SM	SANITARY SEWER		
RM	REUSE MAIN		
FO	UNDERGROUND FIBER OPTIC		
UG	UNDERGROUND GAS MAIN		
TL	TREE LINE		
CLM	CLEARING LIMITS		
UL	UNDERGROUND UTILITY AS NOTED		
ED	EDGE OF PAVEMENT		
CM	CONCRETE CURB AS NOTED		
WF	WOOD FENCE		
PF	PLASTIC FENCE		
M	METAL FENCE		
GR	GUARD RAIL/HAND RAIL		
BR	BEARING BASE		
FIRM	FLOOD INSURANCE RATE MAP		
ID	IDENTIFICATION		
W	W/TH		
IRV	IRIGATION CONTROL VALVE		
STN	STATION		
WM	WATER METER		
WV	WATER GATE VALVE		
RV	REVERSE GATE VALVE		
GV	GAS PLUG VALVE		
TN	TOP OF NUT		
FD	FIRE HYDRANT		
FDC	FIRE DEPARTMENT CONNECTION		
SSM	SANITARY SEWER MANHOLE		
GTM	GREASE TRAP MANHOLE		
SDM	STORM DRAIN MANHOLE		
CONC	CONCRETE		
FLM	FLOODED FLOOR		
PLS	PROFESSIONAL LAND SURVEYOR		
FLC	PRE-CAST CONCRETE FLARED END		
BFP	BACK FLOW PREVENTER		
DDC	DOUBLE DETECTOR CHECK VALVE		
AV	AIR RELEASE VALVE		
TCD	TRUNCATED DOME		
NR	NON-RADIAL		
CD	CHORD DISTANCE		
CB	CHORD BEARING		
L	CURVE LENGTH		
R	CURVE RADIUS		
D	CURVE DELTA		
INDICATES DOUBLE TIE LOCATION			
INDICATES MANHOLE NUMBER			
INDICATES SAMPLE LOCATION			
OFFICIAL RECORDS BOOK			
PLAT BOOK			
PAGE			
TOP OF DETERMINED			
TOP OF BANK			
TOP OF SLOPE			
REINFORCED CONCRETE PIPE			
CORRUGATED PLASTIC PIPE			
CORRUGATED METAL PIPE			
HIGH DENSITY POLYETHYLENE PIPE			
HIGH PRESSURE POLYPROPYLENE PIPE			
DUCTILE IRON PIPE			
TRANSFORMER PAD			
UTILITY HAND HOLE			
UTILITY RISER			
WOOD POWER AND			
STORM PIPE AS NOTED			
BONE HOLE WITH GROUND ELEVATION			
OVERHEAD WIRE			
CENTERLINE OF SHALE			
EXISTING			
SPOT ELEVATION LOCATION			
PROPOSED GRADE			
CENTERLINE			
RIGHT OF WAY			
NAIL AND DISK			
NAIL AND TIN TAB			
FLOOD INSURANCE RATE MAP			
CONCRETE			
ASPHALT			
POINT ON LINE			
COMPUTED			
MEASURED			
BEARING BASE			
FLOOD			
IRON ROD			
IRON PIPE			
4"x4" CONCRETE FOUND AS NOTED			
4"x4" CONCRETE SET AS NOTED			
1/2" IRON MARKER SET OR FOUND AS NOTED			
NAIL AND DISC SET/FOUND AS NOTED AND DESCRIBED			

DESCRIPTION: A PARCEL OF LAND BEING A PORTION OF LANDS DESCRIBED IN OFFICIAL RECORDS BOOK 5441, PAGE 5048, OF THE PUBLIC RECORDS OF BREVARD COUNTY, FLORIDA, BEING MORE PARTICULARLY DESCRIBED AS FOLLOWS:

COMMENCE AT THE INTERSECTION OF THE EAST RIGHT OF WAY LINE OF MURRELL ROAD AND THE SOUTH RIGHT OF WAY LINE OF VERA BOULEVARD AND RUN S02°28'09"W ALONG SAID EAST RIGHT OF WAY LINE, A DISTANCE OF 623.75 FEET TO THE POINT OF CURVATURE OF A CURVE CONCAVE NORTHEASTERLY, HAVING A RADIUS OF 1525.00 FEET AND A CENTRAL ANGLE OF 15°03'34"; THENCE SOUTHEASTERLY ALONG THE ARC OF SAID CURVE A DISTANCE OF 400.83 FEET; THENCE N73°08'30"E A DISTANCE OF 509.84 FEET TO THE POINT OF BEGINNING; THENCE CONTINUE N73°08'30"E, A DISTANCE OF 6.32 FEET TO THE POINT OF CURVATURE OF A CURVE CONCAVE NORTHWESTERLY, HAVING A RADIUS OF 320.00 FEET AND A CENTRAL ANGLE OF 30°32'23"; THENCE NORTHEASTERLY ALONG THE ARC, A DISTANCE OF 170.57 FEET TO THE POINT OF TANGENCY; THENCE N42°36'07"E, A DISTANCE OF 79.81 FEET; THENCE S47°25'42"E, A DISTANCE OF 186.37 FEET; THENCE S42°34'18"W, A DISTANCE OF 46.47 FEET TO THE POINT OF CURVATURE OF A CURVE CONCAVE NORTHWESTERLY, HAVING A RADIUS OF 591.00 FEET AND A CENTRAL ANGLE OF 29°46'50"; THENCE SOUTHWESTERLY ALONG THE ARC, A DISTANCE OF 307.18 FEET TO A POINT ON THE EAST LINE OF LANDS DESCRIBED IN OFFICIAL RECORDS BOOK 9485, PAGE 377; THENCE N16°51'30"W, ALONG SAID EAST LINE, A DISTANCE OF 181.24 FEET TO THE POINT OF BEGINNING, CONTAINING 1.28 ACRES, MORE OR LESS.

AAL LAND SURVEYING SERVICES, INC.

3870 MINTON ROAD, WEST MELBOURNE, FL 32904 LB#6623
PHONE: (321)768-8110 FAX: (321)852-9771 E-MAIL: frontdesk@aalsurveying.com

ANDREW W. POWSHOK P.L.S. No. 5383
DANIEL D. GARNER P.L.S. No. 6189

PROJECT #50397