

FOR LEASE

DESIRABLE WEST CONCORD LOCATION

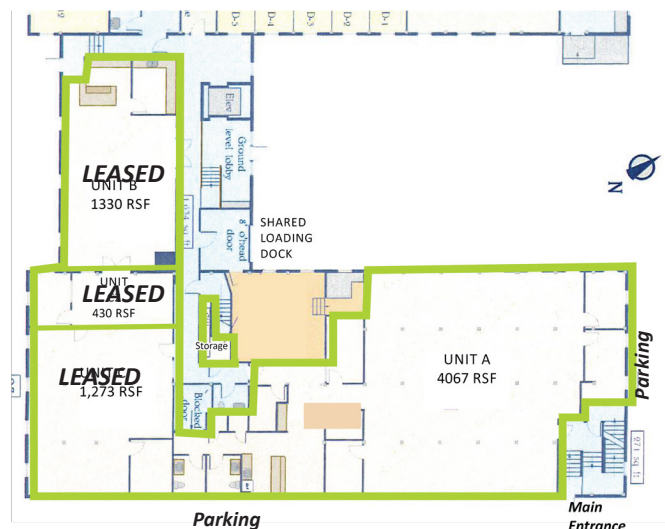
23 BRADFORD STREET, CONCORD



FIRST FLOOR OFFICE SPACE

Property Highlights:

- Class A office space on the first floor
 - 4,067 RSF (Unit A)
- Highly desirable, modern, open layout
- Exposed ceilings
- Window line on three sides
- Abundant parking- 6/1,000 RSF
- Vehicle charging stations
- Steps from West Concord Village amenities
- Walking distance to MBTA Commuter Rail Station



Tyler Spring

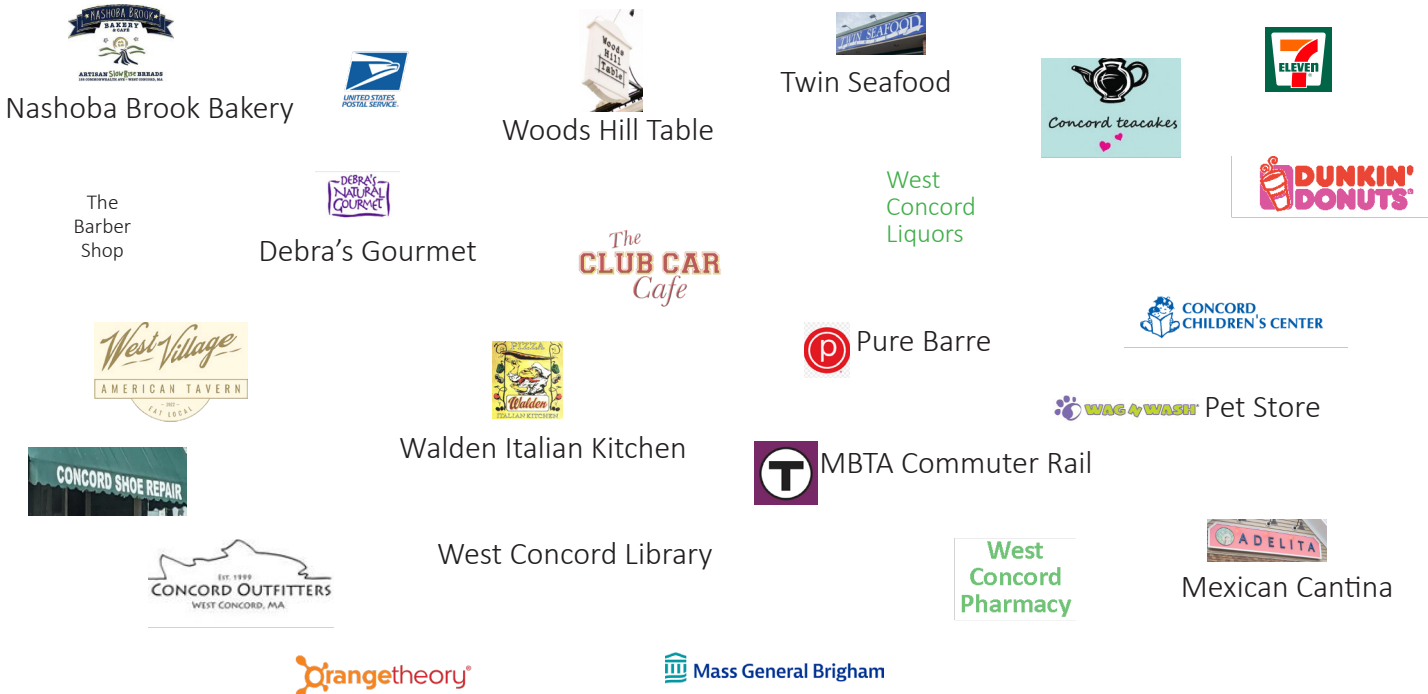
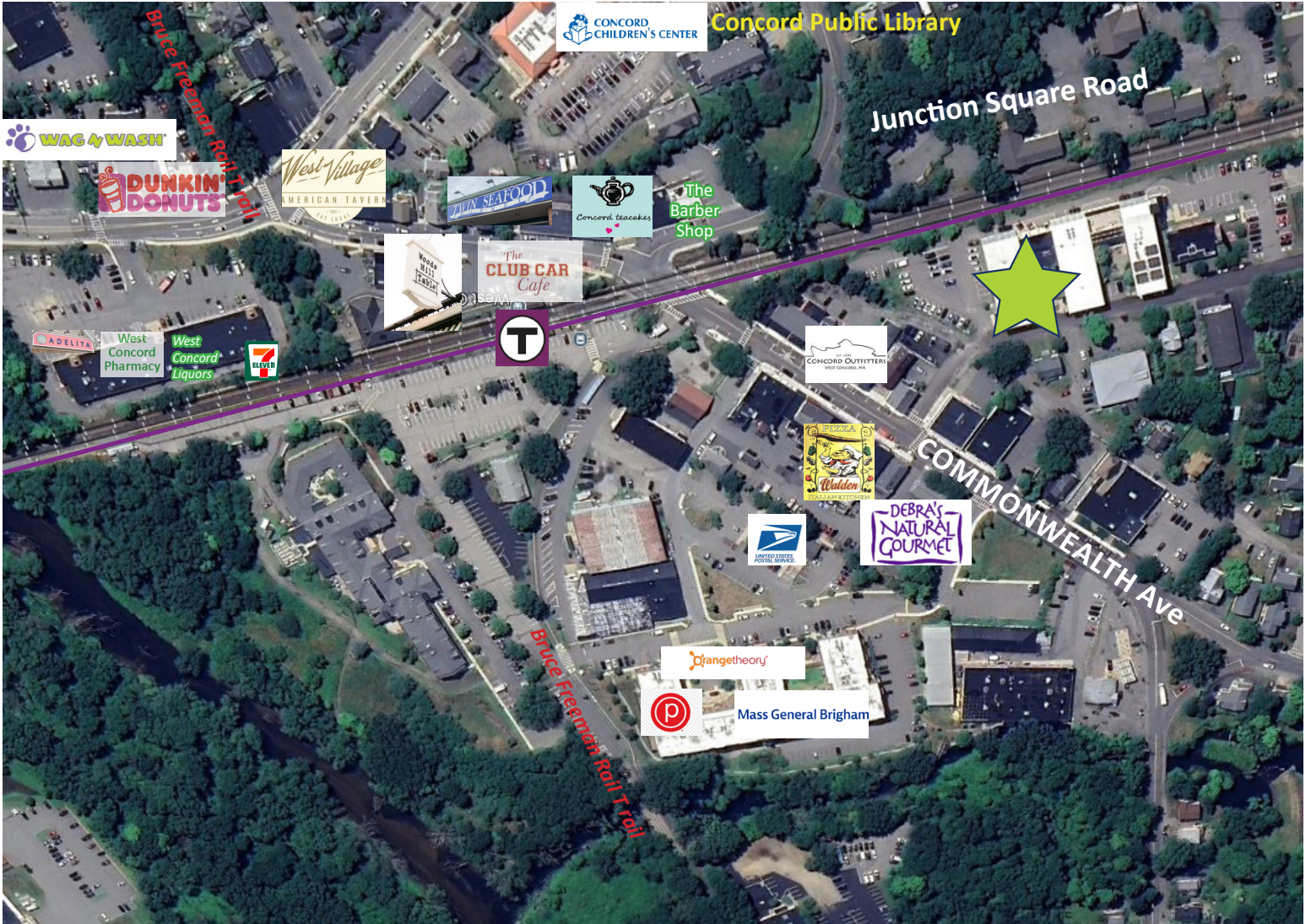
617.834.8602

Tspring@omniproperties.com

 **OMNI PROPERTIES**
6 Lyberty Way, Westford MA 01886

23 Bradford Street Concord MA

Location Overview



23 Bradford Street Concord MA

Floor Plan



