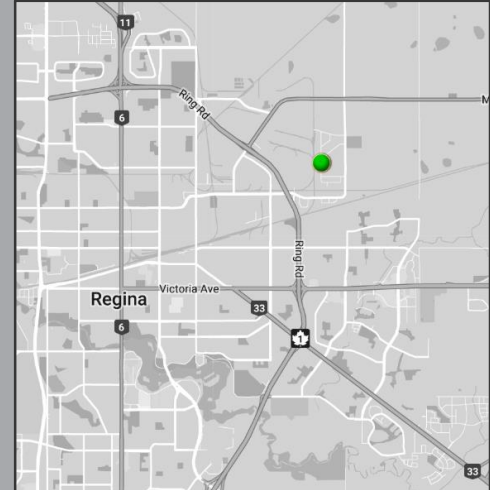


## NEW CONSTRUCTION INDUSTRIAL



520 Solomon Drive | Regina, SK

### Features

- + Small bays
- + Private washrooms and shop sink in each unit
- + 14' x 16' OH doors
- + Floor drain
- + Water & sewer included in Rent
- + Power & gas separately metered

### Property Details

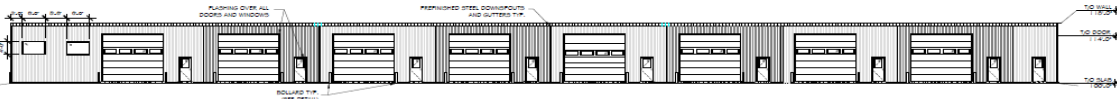
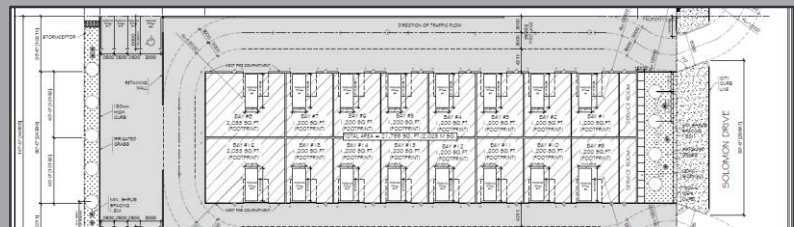
Available sizes:  
 2- 2,033 SF, 14- 1,200 SF

Lease rate (includes operating costs):  
 2,033 SF -\$2,550/mo.  
 1,200 SF - \$1,500/mo.

Zoning:  
 IB

Legal description:  
 Lot 2, Block 45, Plan 102110533

Possession:  
 September 2019



NORTH ELEVATION  
 SCALE:  $\frac{1}{16}'' = 1'-0''$



EAST ELEVATION  
 SCALE:  $\frac{1}{16}'' = 1'-0''$

### WALKER MOULDING

Senior Sales Associate  
 306 501 0609  
[walker.moulding@cbre.com](mailto:walker.moulding@cbre.com)

© 2019 CBRE, Inc. All rights reserved. This information has been obtained from sources believed reliable, but has not been verified for accuracy or completeness. You should conduct a careful, independent investigation of the property and verify all information. Any reliance on this information is solely at your own risk. CBRE and the CBRE logo are service marks of CBRE, Inc. All other marks displayed on this document are the property of their respective owners, and the use of such logos does not imply any affiliation with or endorsement of CBRE. Photos herein are the property of their respective owners. Use of these images without the express written consent of the owner is prohibited.