

FOR SUBLEASE

8653 HAYDEN PL

CULVER CITY, CA 90232



Hayden Tract Prime Industrial Unit

Unit 8653 - 3,000 SF available with 450 SF of existing office space

Clear height 23 feet

Office entirely upstairs

2 restrooms

HVAC in warehouse & office

200 amps, 120-208 volts, 3Ø and 4W

Zoning CCM1*

Loading 1 drive-in door

Sublease through March 31, 2028

Currently built out with full warehouse kitchen and multiple warehouse room segments. Photos below reflect the original open floorplan for reference.

3,000

SF UNIT

\$3.00

PSF GROSS

\$0.07

PSF CAM

IAN STEVENSON

Vice President

310.906.3277

ian.stevenson@kidder.com

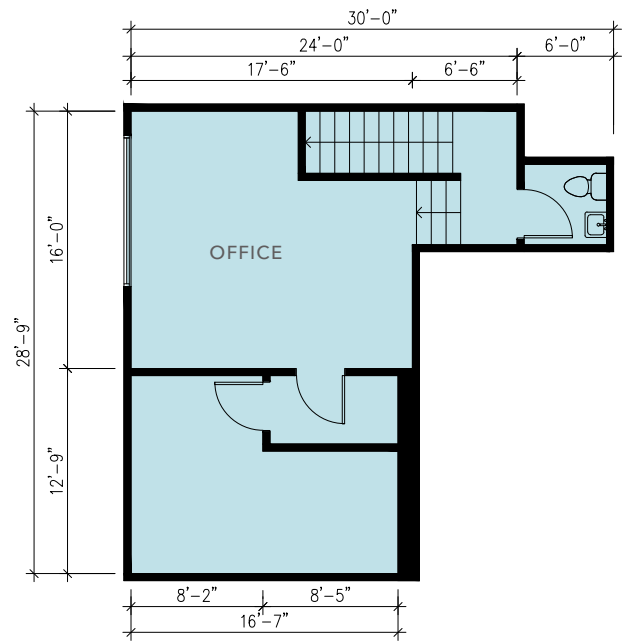
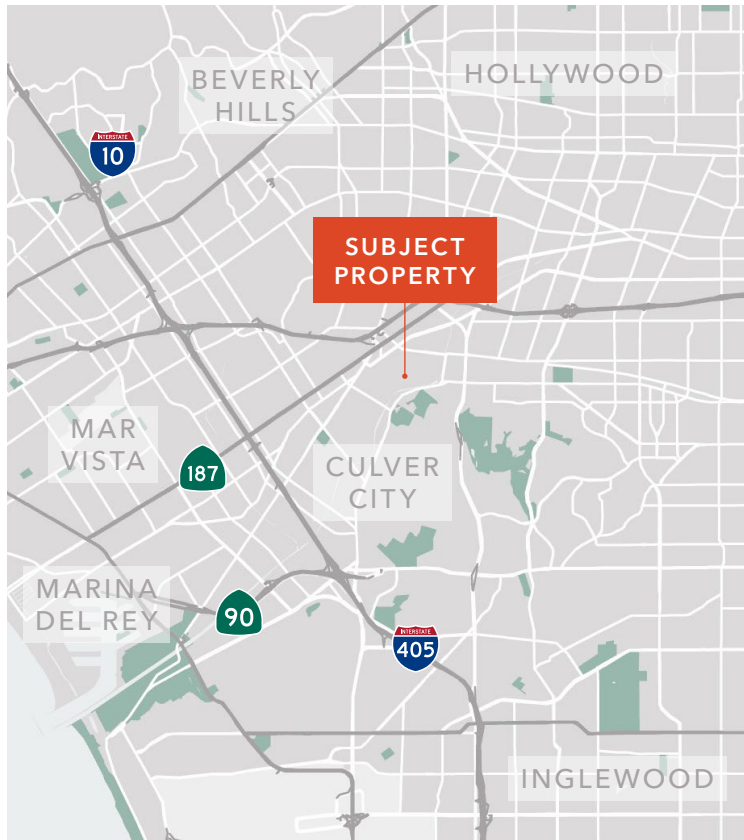
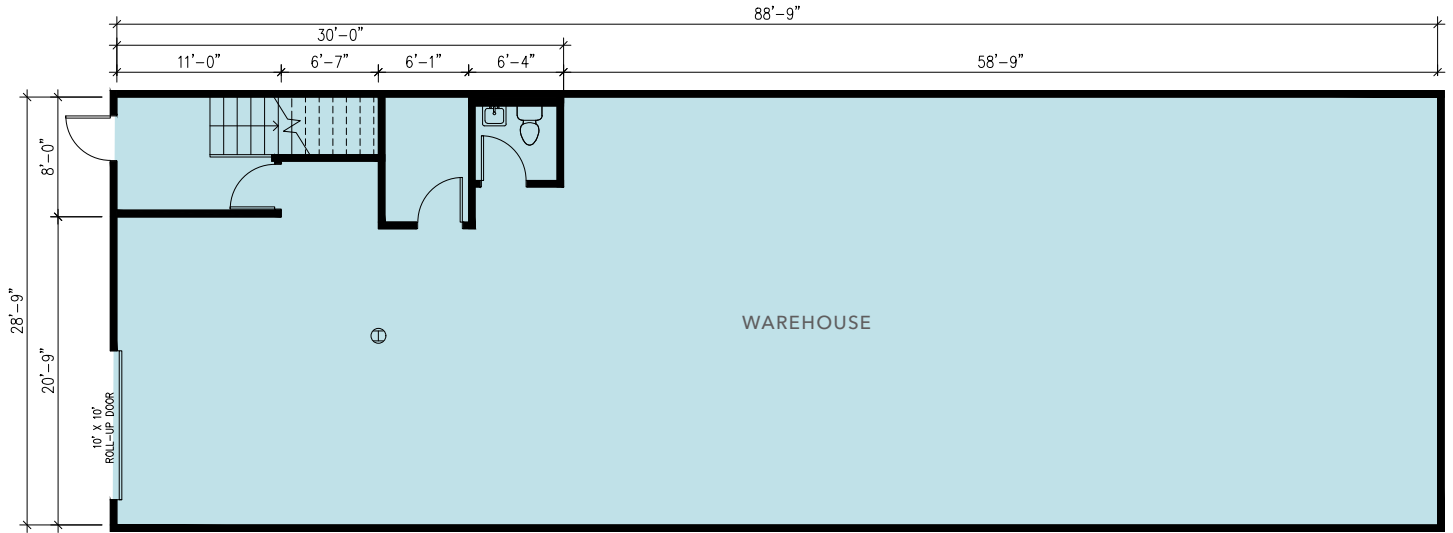
LIC N° 02045140

KIDDER.COM

This information supplied herein is from sources we deem reliable. It is provided without any representation, warranty, or guarantee, expressed or implied as to its accuracy. Prospective Buyer or Tenant should conduct an independent investigation and verification of all matters deemed to be material, including, but not limited to, statements of income and expenses. Consult your attorney, accountant, or other professional advisor.

km Kidder Mathews

ORIGINAL SITE PLAN



3,000 SF
WAREHOUSE

450 SF
OFFICE

IAN STEVENSON
310.906.3277 | ian.stevenson@kidder.com
LIC N° 02045140

KIDDER.COM

This information supplied herein is from sources we deem reliable. It is provided without any representation, warranty, or guarantee, expressed or implied as to its accuracy. Prospective Buyer or Tenant should conduct an independent investigation and verification of all matters deemed to be material, including, but not limited to, statements of income and expenses. Consult your attorney, accountant, or other professional advisor.





IAN STEVENSON

310.906.3277 | ian.stevenson@kidder.com

LIC N° 02045140

KIDDER.COM

This information supplied herein is from sources we deem reliable. It is provided without any representation, warranty, or guarantee, expressed or implied as to its accuracy. Prospective Buyer or Tenant should conduct an independent investigation and verification of all matters deemed to be material, including, but not limited to, statements of income and expenses. Consult your attorney, accountant, or other professional advisor.



