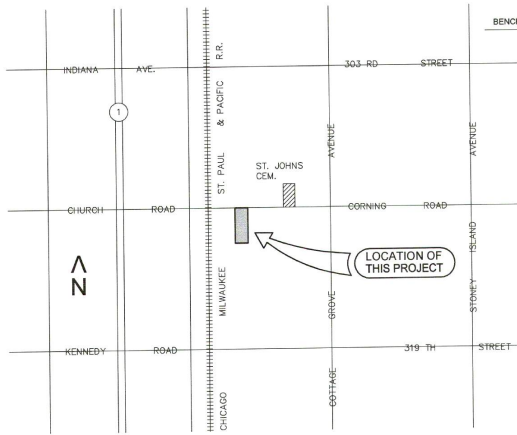


BEECHER, ILLINOIS



LOCATION MAP
NO SCALE

STANDARD SYMBOL LEGEND	
EXISTING	PROPOSED

LEGAL DESCRIPTION

THE WEST 495.0 FEET OF THE EAST 825.0 FEET OF THE NORTH HALF OF THE NORTHWEST QUARTER OF SECTION 27, TOWNSHIP 33 NORTH, RANGE 14 EAST OF THE THIRD PRINCIPAL MERIDIAN, IN WILL COUNTY, ILLINOIS.

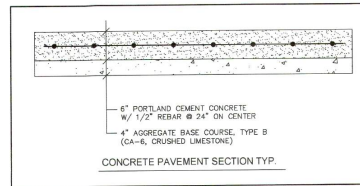
PIN NO. 22-27-100-009

UNION ELECTRONICS DISTRIBUTORS
BEECHER, ILLINOIS

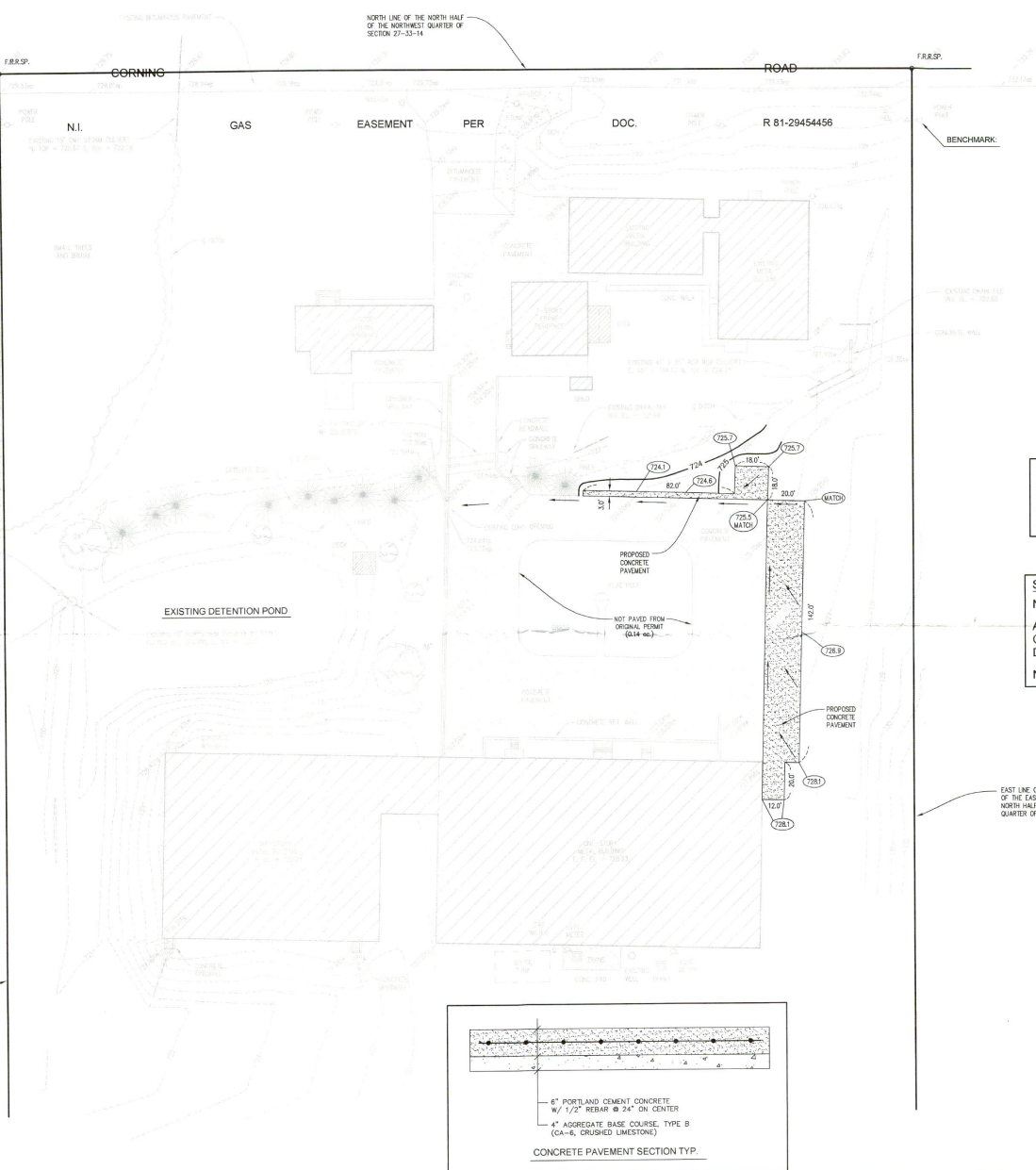
TECH 3 Consulting Group, Inc.
ENGINEERS SURVEYORS
737 West Exchange St. Crete, IL 60417
ph 708.672.4994 fax 708.672.3799

DESIGNED BY: RWM
DRAWN BY: EGH
CHECKED BY: RWM

REVISIONS			
NO.	DATE	BY	DESCRIPTION



CONCRETE PAVEMENT SECTION TYP.



BENCHMARKS:
TWO NAILS IN POWER POLE AT THE NORTHWEST CORNER OF SITE ALONG SOUTH R.O.W. OF CORNING ROAD ELEV. = 728.45
NAIL IN NORTH FACE OF POWER POLE AT THE NORTHEAST CORNER OF SITE ALONG THE SOUTH R.O.W. OF CORNING ROAD ELEV. = 729.54

SITE DATA:
NEW PAVEMENT - 0.08 ac
AREA NOT PAVED FROM ORIGINAL PERMIT W/ DETENTION - 0.14 ac.
NET REDUCTION - 0.06 ac.

EAST LINE OF THE WEST 495.0 FT. OF THE EAST 825.0 FT. OF THE NORTH HALF OF THE NORTHWEST QUARTER OF SECTION 27-33-14



TECH 3 CONSULTING GROUP, INC. ASSUMES NO LIABILITY FOR THE CORRECTNESS OR ACCURACY OF THESE PLANS UNLESS AN ORIGINAL SIGNATURE AND SEAL OF A REGISTERED PROFESSIONAL ENGINEER IS OBTAINED BY THE CORPORATION AND AFFIXED TO EACH SHEET OF THESE PLANS.
DATED THIS 20th DAY OF NOVEMBER, 2009.
LICENSE EXPIRES: NOVEMBER 30, 2009
ILLINOIS PROFESSIONAL DESIGN FIRM NO. 184-002235

ILLINOIS PROFESSIONAL DESIGN FIRM NO. 184-002235

UNION ELECTRONICS
BEECHER, ILLINOIS
SITE PLAN

DATE: NOVEMBER 25, 2008 SCALE: 1" = 30' JOB NO. 08090