

210,000 SF WAREHOUSE

103 SOUTH ACRES DRIVE, SIKESTON, MO 63801

FOR LEASE

Presented By:

MATT HUBER
573.334.5200
mhuber@lorimont.com

CHRIS COLE, JD, CCIM
573.334.5200
ccole@lorimont.com

PROPERTY SUMMARY



PROPERTY DESCRIPTION

Discover a rare leasing opportunity like no other at 103 South Acres Drive, Sikeston, MO, 63801. This exceptional property features six dock height doors with hydraulic levers and a dock height overhead door, offering unparalleled accessibility for logistics operations. With a ceiling height of 22' on the sides and 34' in the center, this space provides the clearance needed for diverse activities. The large drop lot for 100+ trucks and ample parking space enhance the property's functionality. Situated 150 miles equidistant from St. Louis and Memphis, and located only 1/4 mile from the intersection of Interstate 55 and Interstate 57, this property offers an ideal location for businesses seeking strategic connectivity and efficient operations.

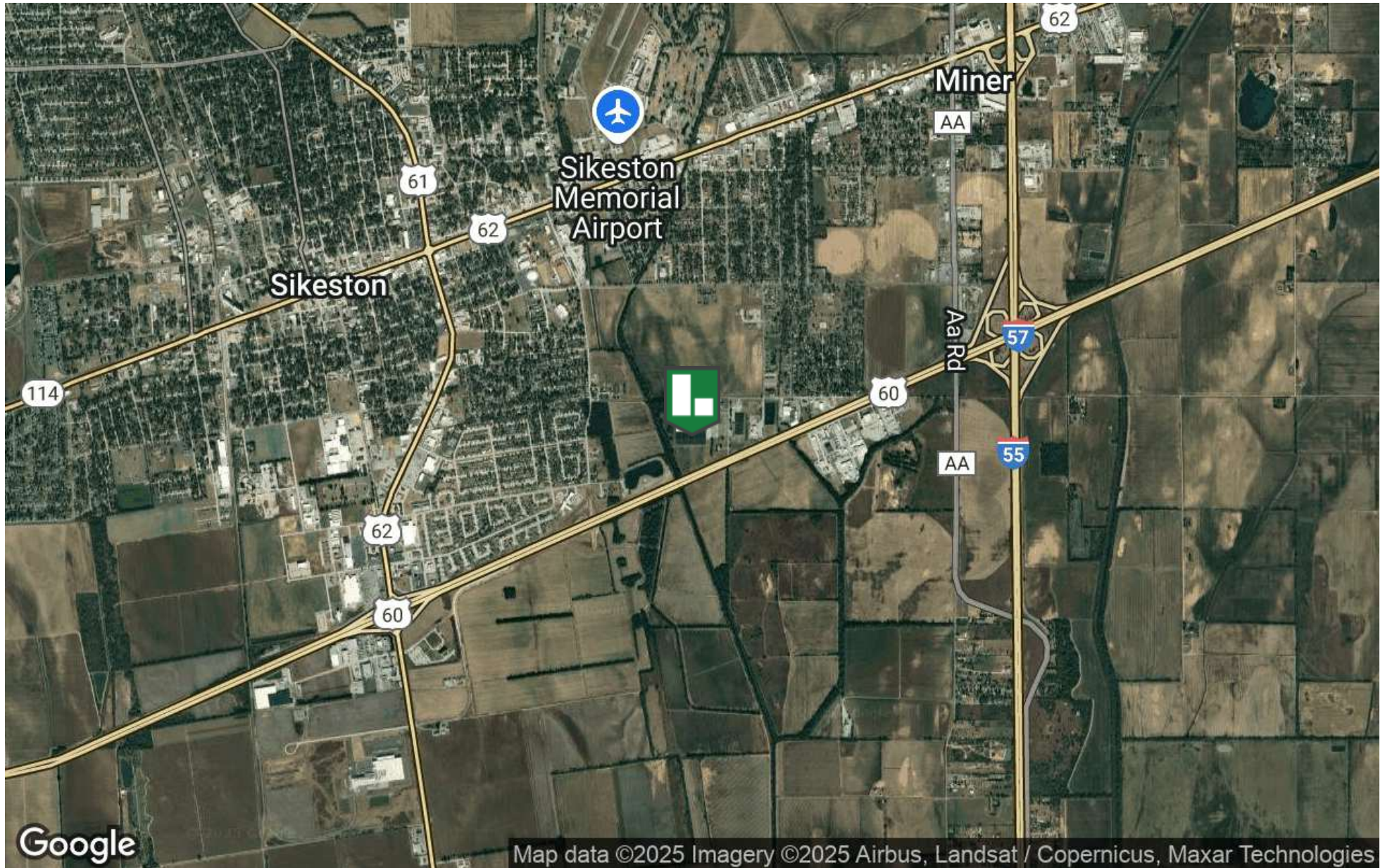
PROPERTY HIGHLIGHTS

- Six dock height doors with hydraulic levers
- One dock height overhead door
- Ceiling height: 22' on sides, 34' in center
- Large drop lot for 100+ trucks
- Ample parking space
- 150 miles equidistance from St. Louis & Memphis
- Located 1/4 mile from intersection of Interstate 55 and Interstate 57

OFFERING SUMMARY

Lease Rate:	\$4.25 SF/yr (NNN)
Number of Units:	1
Available SF:	210,000 SF

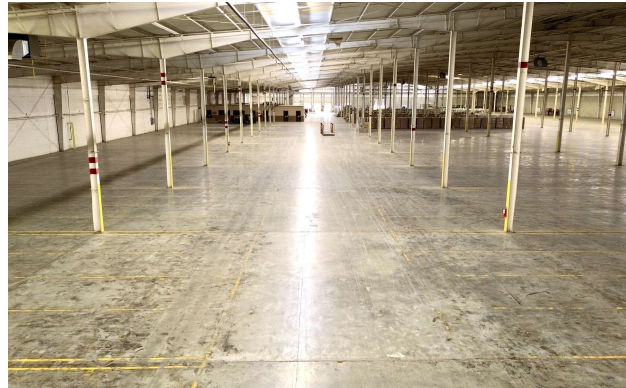
LOCATION MAP



Presented By: **MATT HUBER** | mhuber@lorimont.com

CHRIS COLE, JD, CCIM | ccole@lorimont.com

ADDITIONAL PHOTOS



Presented By: **MATT HUBER** | mhuber@lorimont.com

CHRIS COLE, JD, CCIM | ccole@lorimont.com

AREA MAP



Presented By: **MATT HUBER** | mhuber@lorimont.com **CHRIS COLE, JD, CCIM** | ccole@lorimont.com

MATT HUBER**MATT HUBER**

Commercial REALTOR®

mhuber@lorimont.com

Direct: **573.334.5200** | Cell: **573.510.3993**

MO #2023031239

PROFESSIONAL BACKGROUND

Matt Huber has been active in economic and business development, sales, customer service, and residential and commercial real estate investing for over 10 years.

Matt began his commercial real estate career with Lorimont in 2023. In 2008, Matt graduated with a Master of Business Administration focused on Entrepreneurship from Southeast Missouri State University's Harrison College of Business. Matt's wife, Amanda, has been an area real estate broker for 10 years, and together they have invested in several residential and commercial projects.

Matt has extensive work experience in the utility field, where he has been a territory manager and business and economic development specialist. He graduated from the University of Oklahoma Economic Development Institute (EDI) in 2019, and in his business and economic development career, Matt has been a part of bringing many new corporate accounts into his territory, working hand-in-hand with local and regional governmental, chamber of commerce, and private investor stakeholders in recruiting new businesses to the area.

It is this well-rounded skillset that Matt brings to the Lorimont team. Matt focuses on assisting investors, businesses, and developers in site selection, excess property sales, and tenant and landlord representation.

Lorimont Commercial Real Estate

276 S. Mount Auburn Rd <https://www.lorimont.com/>
Cape Girardeau, MO 63703
573.334.5200

Presented By: **MATT HUBER** | mhuber@lorimont.com**CHRIS COLE, JD, CCIM** | ccole@lorimont.com

CHRIS COLE**CHRIS COLE, JD, CCIM**

Commercial & Industrial Broker

ccole@lorimont.com

Direct: **573.334.5200** | Cell: **573.275.0429****PROFESSIONAL BACKGROUND**

Chris Cole, a Missouri licensed attorney and real estate broker, has been active in commercial real estate in a variety of roles since 2004.

Chris began his commercial real estate career as an intern with a Columbia, Missouri-based commercial real estate brokerage and developer that builds and leases retail strip centers all over the country. In 2005, Chris graduated from the University of Missouri - Columbia Trulaske College of Business with a dual degree in Finance and Real Estate, and he obtained his real estate license shortly thereafter.

After spending some time in the mortgage industry, Chris went to law school at the University of Missouri - Kansas City, passing the bar and entering law practice in 2009. As an attorney, Chris focused his practice on real estate and other business transactions, assisting a variety of clients throughout Southeast Missouri with vacant land, farm, and other commercial property leases, purchases, and sales.

Chris left full time law practice in late 2012 and entered the commercial real estate and land brokerage industry. Chris is Broker and Owner of Lorimont Commercial Real Estate, where his commercial real estate practice focuses on assisting investors and developers with acquisitions and dispositions, tenant and landlord representation, and investment and feasibility analysis in all asset classes.

In 2021, Chris became a Certified Commercial Investment Member (CCIM) of the National Association of REALTORS' CCIM Institute. The CCIM designation is commercial real estate's global standard for professional achievement, earned through an extensive curriculum of 200+ classroom hours and professional experiential and volume requirements.

Lorimont Commercial Real Estate

276 S. Mount Auburn Rd <https://www.lorimont.com/>
Cape Girardeau, MO 63703
573.334.5200

Presented By: **MATT HUBER** | mhuber@lorimont.com**CHRIS COLE, JD, CCIM** | ccole@lorimont.com