

1655 EUCLID ST SANTA MONICA

FOR LEASE
±5,261 RSF
CREATIVE OFFICE



redcar
development

INDUSTRYPARTNERS.COM
310 395 5151
CA BRE No. 01900833

SCOTT RIGSBY
sr@industrypartners.com
CA BRE No. 01252835

ELLIOT SCHWARTZ
es@industrypartners.com
CA BRE No. 02020686

INDUSTRY



CREATIVE OFFICE | STAND ALONE BUILDING

DETAILS

BUILDING DETAILS

SUITE 1 ± 5,261 RSF

PARKING

RATIO 1:1000 Onsite

RATE/PASS/Mo. \$250

*Additional 2/1000 at adjacent property

WHAT'S DIFFERENT

Improvements:

- Exposed ceilings with polished concrete floors
- Steel operable windows inside-and-out
- Multiple skylights provide bright interiors
- Fully equipped kitchenette
- Grade level roll-up door

LEASE TERMS

RATE \$5.45 / SF per Mo. / NNN

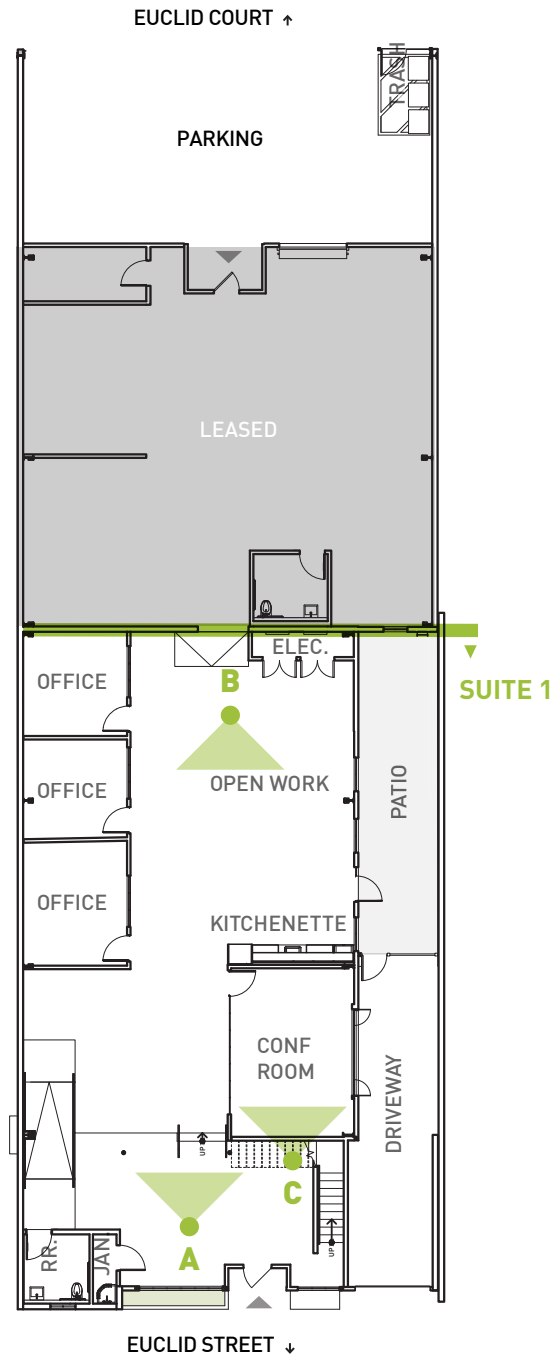
OCCUPANCY Immediately

TERM 3-10 Years

Location: Creative office building with outstanding Euclid Street location, steps away from 17th St/ Santa Monica College Expo Line Station

Unique: Integrated photo studio offers a versatile and productive environment

± 8,100 RSF TOTAL



A— INTERIOR WORKSPACE



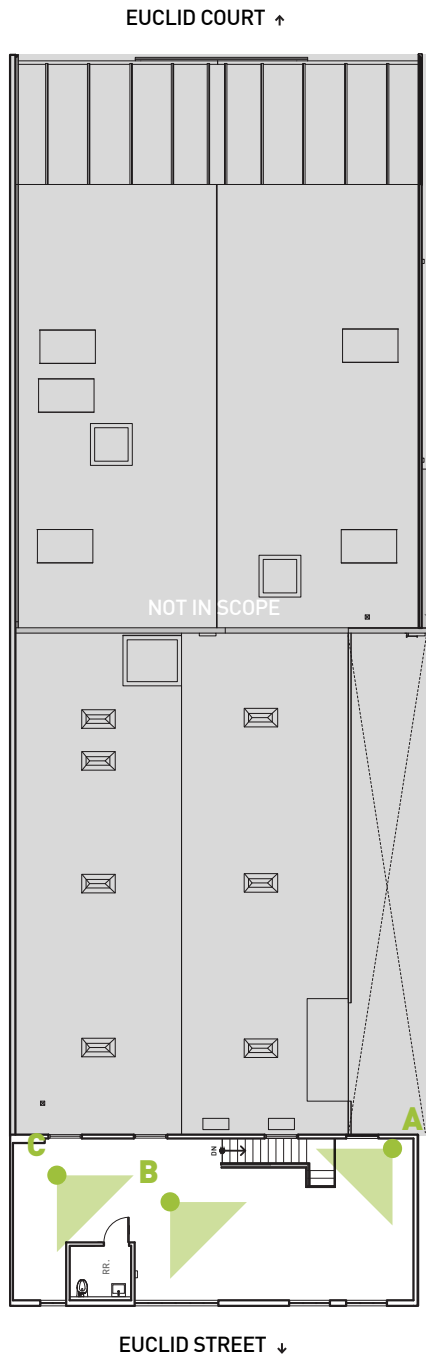
B— KITCHEN AREA



C— CONFERENCE ROOM

FLOOR PLAN | 1ST FLOOR

± 8,100 RSF TOTAL



A— MEZZANINE AREA



B— MEZZANINE AREA



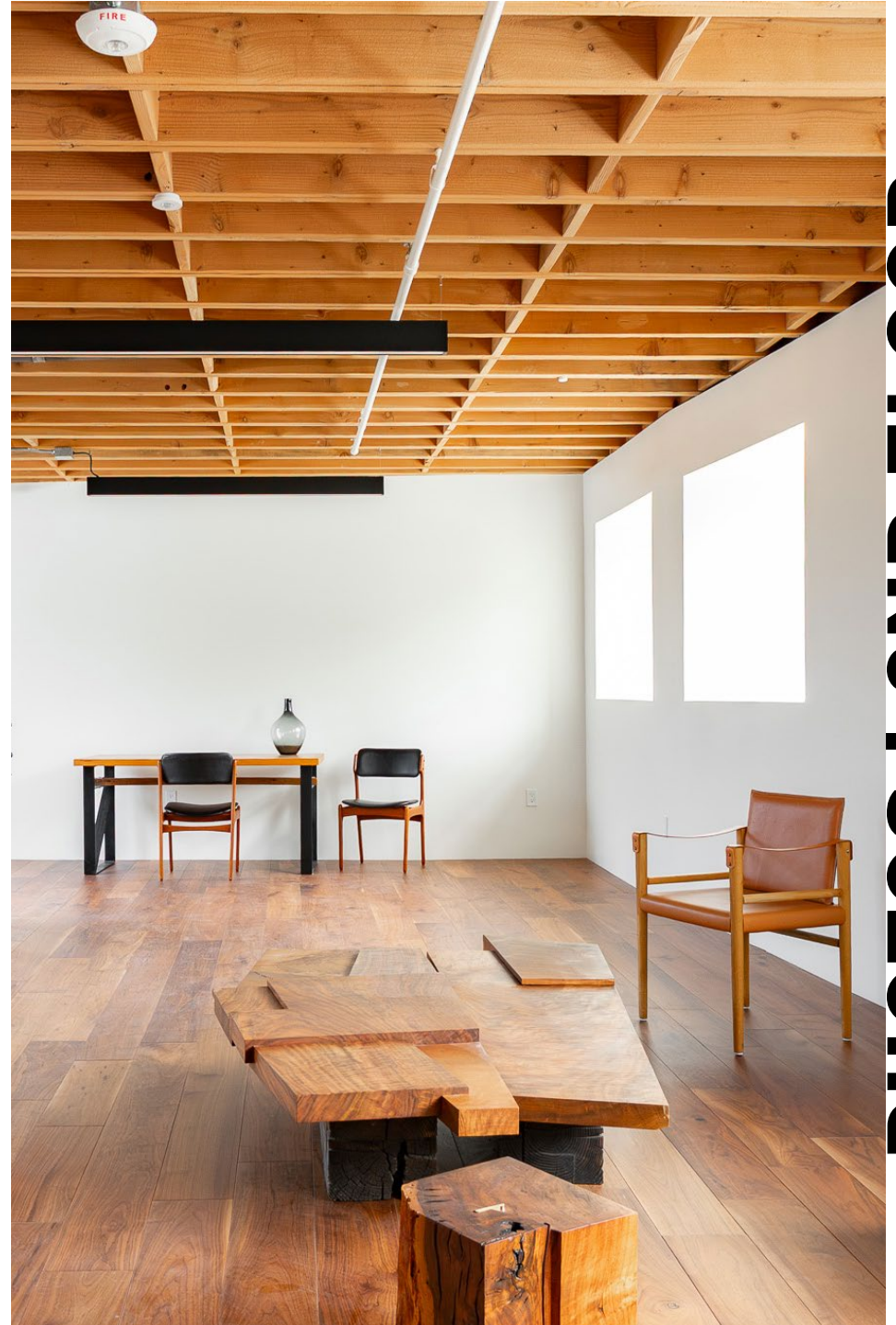
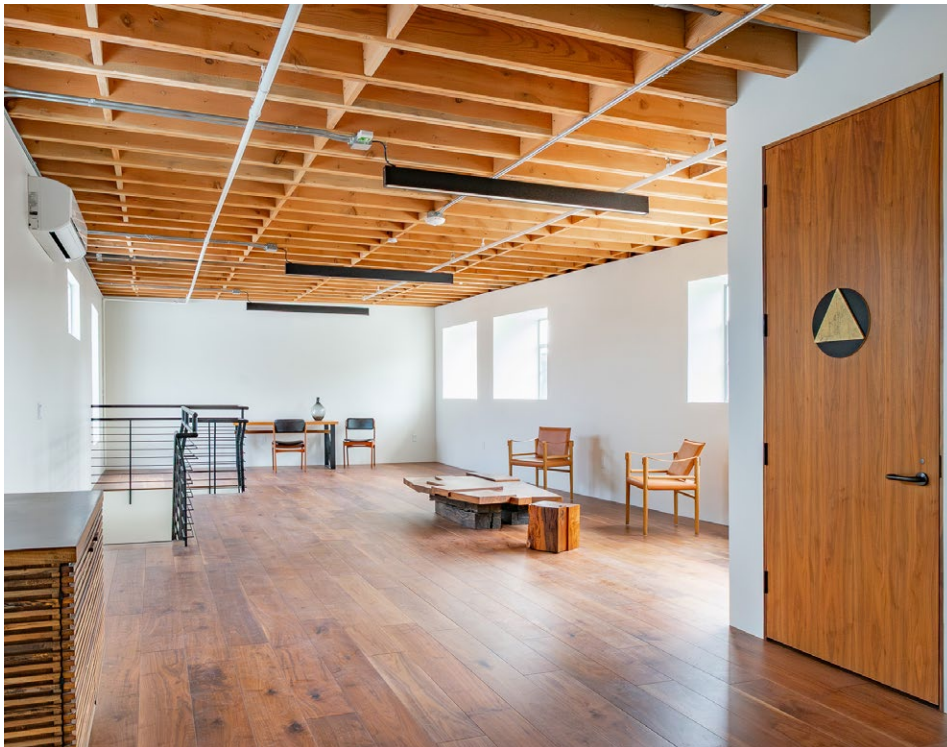
C— MEZZANINE AREA

FLOOR PLAN | 2ND FLOOR



INTERIOR PHOTOS

PHOTOS | 1ST FLOOR



INTERIOR PHOTOS

PHOTOS | 2ND FLOOR

10 WITHIN 10

5 min
DRIVE

Layla's Bagels is a beloved neighborhood spot that captures the essence of East Coast bagel culture with a West Coast twist. Stepping into Layla's, patrons are greeted by the irresistible aroma of freshly baked bagels, crafted with care using traditional techniques and high-quality ingredients.

5 min
DRIVE

Ghisallo offers authentic Italian dining in a cozy, rustic setting. With a menu showcasing traditional dishes like handmade pastas and wood-fired pizzas, the restaurant invites guests to savor the flavors of Italy amidst its charming ambiance of exposed brick walls and flickering candlelight.

4 min
DRIVE

Bay Cities is a legendary Italian deli famous for its mouthwatering sandwiches and gourmet groceries. With imported meats, cheeses, and homemade sauces, it's a must-visit spot for a taste of old-school Italian charm with a California twist.

4 min
DRIVE

Pono Burger serves up gourmet burgers made with locally sourced, sustainable ingredients. With a focus on ethical farming and eco-friendly practices, diners can enjoy juicy, flavorful burgers in a cozy yet modern atmosphere.

4 min
DRIVE

Bodega Wine Bar offers a cozy atmosphere and an extensive selection of wines from around the world. Perfect for unwinding with friends, it also features small plates and charcuterie boards to complement the wine tasting experience.

6 min
DRIVE

Thyme Cafe & Market offers fresh, seasonal dishes with a focus on wholesome ingredients. Known for its artisanal sandwiches, salads, and baked goods, it's a cozy spot perfect for casual dining or grabbing gourmet provisions to go.

3 min
DRIVE

Santa Monica Brew Works is a popular brewery known for its craft beers and relaxed vibe. With a variety of locally brewed options, it's a favorite among beer enthusiasts. The inviting taproom offers a laid-back atmosphere to enjoy a brew and soak in the Santa Monica scene.

5 min
DRIVE

Goodboybob is a trendy coffee shop, beloved for its artisanal coffee and chic ambiance. With a commitment to quality, they source their beans from top roasters and serve up expertly crafted espresso drinks and pour-over coffees.

5 min
DRIVE

Tartine is a renowned bakery and cafe, celebrated for its artisanal breads, pastries, and gourmet sandwiches. With a commitment to quality ingredients and a rustic-chic ambiance, it's the perfect spot for a delicious breakfast, brunch, or lunch.

6 min
DRIVE

Le Great Outdoors blends rustic charm with a modern café experience, serving up vibrant, veggie-forward plates and specialty coffee. Its relaxed ambiance, outdoor seating, and thoughtful menu make it a favorite for those seeking mindful meals in a laid-back setting.

AMENITIES

EUCLID ST COMPANIES

NEIGHBORS



MEMORIAL PARK

CROSSROADS SCHOOL

INDIAN PAINTBRUSH

BAD ROBOT

TRAFIK

1655 EUCLID ST

ROGAN GREGORY

INDIAN PAINTBRUSH

MIMI BROWN

DAVID E KELLEY

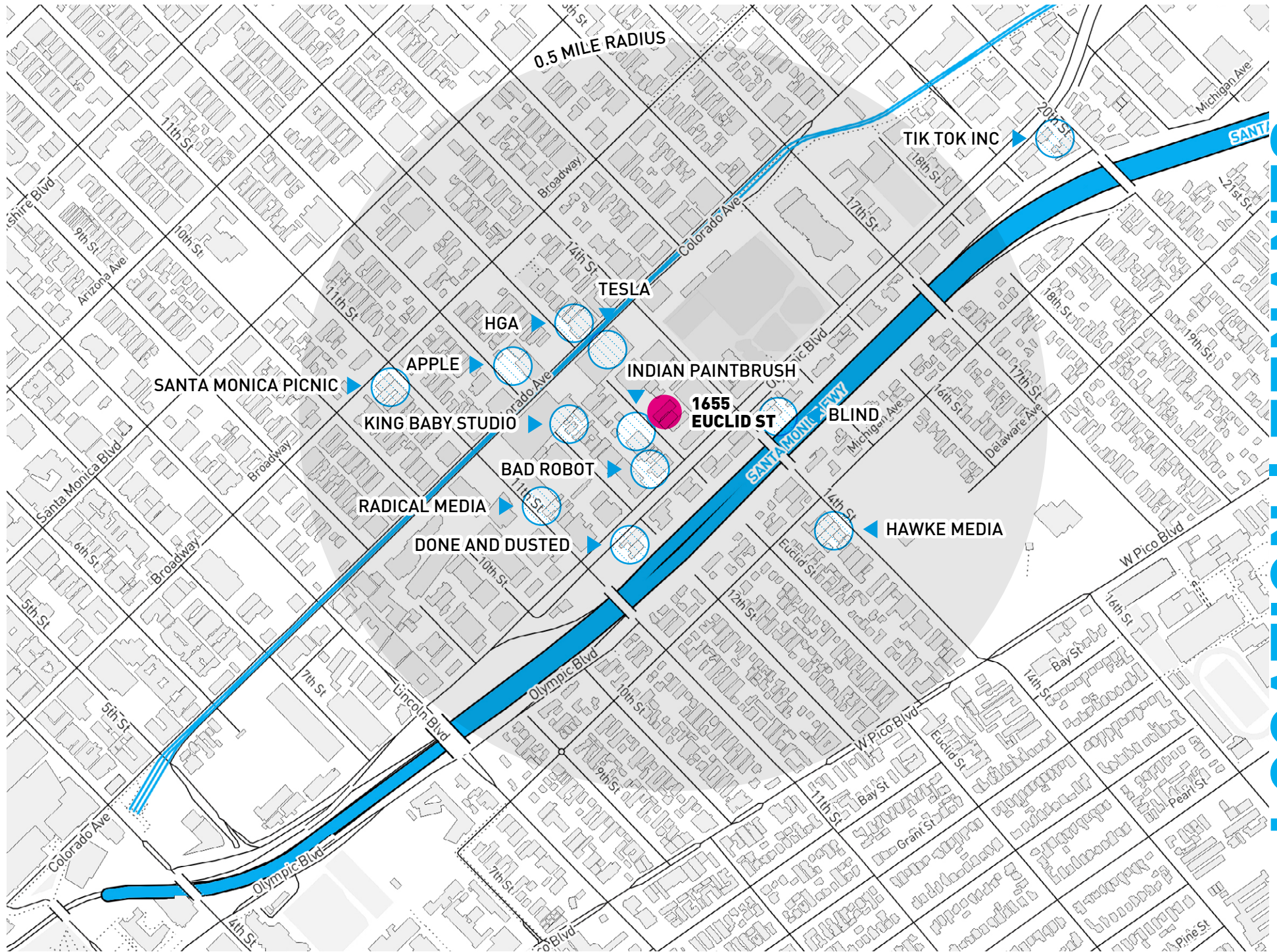
ARTISTS EQUITY

PICO YOUTH FAMILY CENTER

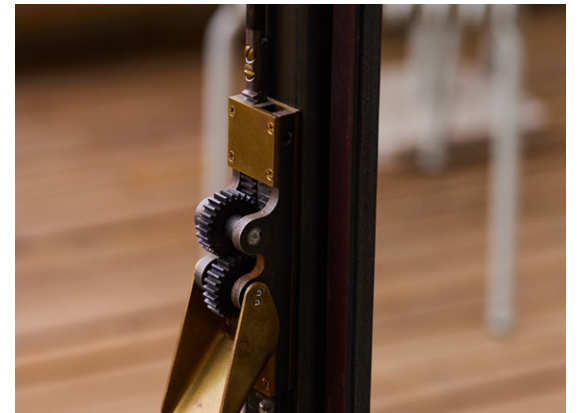
JOURNEY 8

SANTA MONICA MEDIA DISTRICT

LOCATION | TENANTS



Redcar Properties - the developer of 1655 Euclid St - prides itself on best-in-class architecture and design, natural materials such as wood, steel, and concrete, quality fixtures, and timeless finishes. For Redcar, the office experience sets the tone for the company's culture and ultimately the work product.



REDCAR PROPERTIES

ABOUT