

# SALE

## THE MEYERS & TABAKIN BUILDING

25131 Charles M. Lankford Jr. Memorial Hwy, Onley, VA 23418

**SALE PRICE**      \$1,550,000

**Brian Swafford**

ZREC Advisor Group

Coldwell Banker Realty

1131 S. Salisbury Blvd Ste B

Salisbury, MD 21801

[brian.swafford@cbrealty.com](mailto:brian.swafford@cbrealty.com)

Lic. #0225258063



**COLDWELL BANKER**  
**REALTY**



Affiliated real estate agents are independent contractor sales associates, not employees. The property information herein is derived from various sources that may include, but not be limited to, county records and the Multiple Listing Service, and it may include approximations. Although the information is believed to be accurate, it is not warranted and you should not rely upon it without personal verification. ©2022 Coldwell Banker. All Rights Reserved. Coldwell Banker and the Coldwell Banker logos are trademarks of Coldwell Banker Real Estate LLC. The Coldwell Banker® System is comprised of company owned offices which are owned by a subsidiary of Anywhere Advisors LLC and franchised offices which are independently owned and operated. The Coldwell Banker System fully supports the principles of the Fair Housing Act and the Equal Opportunity Act.



# SALE

**THE MEYERS & TABAKIN BUILDING**  
25131 Charles M. Lankford Jr. Memorial Hwy, Onley, VA 23418



## PROPERTY DESCRIPTION

Spacious 25,200 sq ft building with over 300 ft of frontage on US Rt. 13. This property has capacity for 60+ vehicle parking and 2 curb cuts providing smooth highway access. With over 22,000 average daily traffic, this location is a prime space to grow your business with maximum exposure. Located in the heart of Accomack County, and only 200 yards from a signalized intersection. The loading dock and 8 ft roll up door make delivery and distribution seamless. The building features 3 bathrooms and 3 offices as well as showroom and warehouse space. Total land area of over 4 Acres with an additional 1.9 contiguous acres that are available but not included.

## PROPERTY HIGHLIGHTS

- Over 300 ft of highway frontage along busy US Rt. 13
- 25,000+ sq ft situated on more than 4 acres with 1.9 additional acres available

## OFFERING SUMMARY

Sale Price	\$1,550,000.
Number of Units	1
Lot Size	4.16 AC
Building Size	25,200 SF



**COLDWELL BANKER**  
**REALTY**

**Brian Swafford**  
443.614.8983



# SALE

**THE MEYERS & TABAKIN BUILDING**  
25131 Charles M. Lankford Jr. Memorial Hwy, Onley, VA 23418



**Brian Swafford**  
443.614.8983

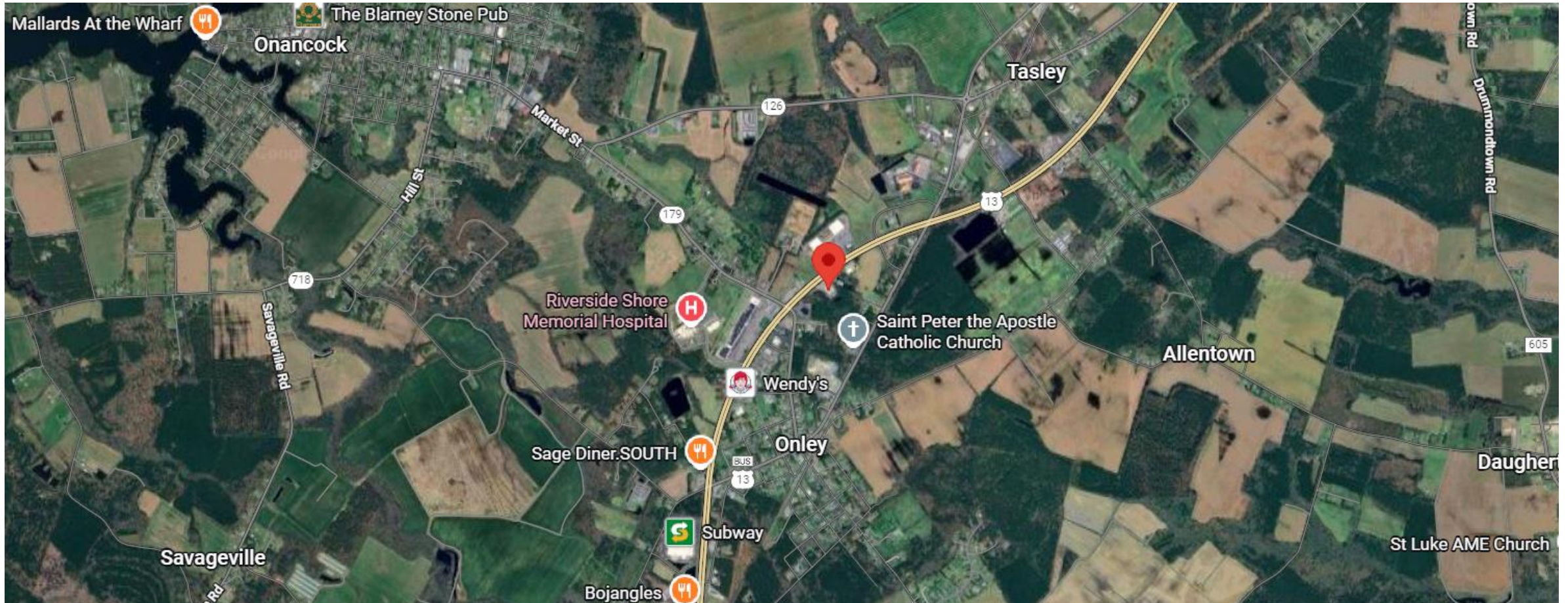


**COLDWELL BANKER**  
**REALTY**

# SALE

## THE MEYERS & TABAKIN BUILDING

25131 Charles M. Lankford Jr. Memorial Hwy, Onley, VA 23418



Brian Swafford  
443.614.8983



**COLDWELL BANKER**  
**REALTY**