



# La Jolla Retail For Lease

520 Pearl St. La Jolla, CA 92037



520 Pearl St. La Jolla, CA 92037

**Turn-key retail opportunity near some of the highest trafficked restaurants in La Jolla.**

**Join the mix of surrounding neighborhood establishments such as The Taco Stand, El Pescador, Mitch's Surf shop, La Corriente, Pizza on Pearl, and more!**

**Size:** 500 – 1,400 SF

**Asking Rent:** Contact Broker

**Term:** Negotiable

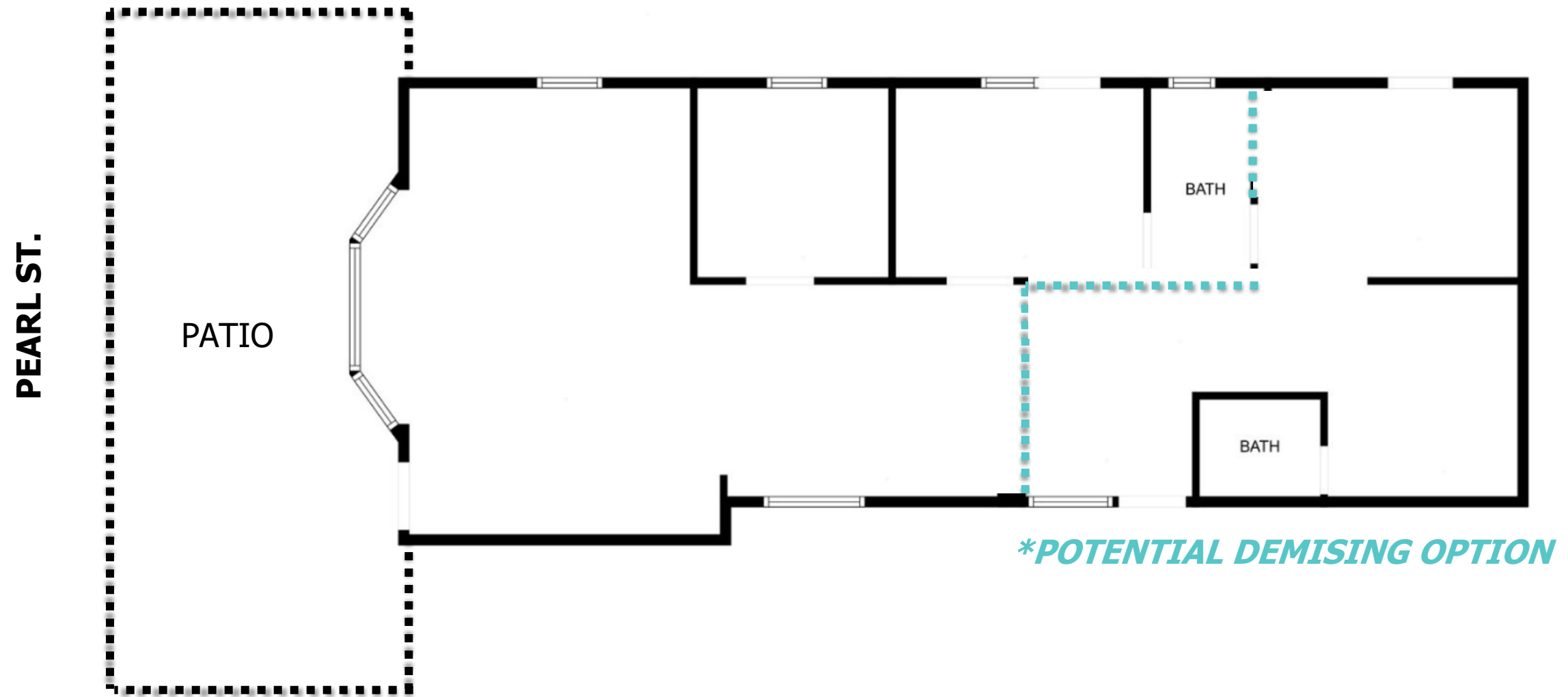
**Building Type:** Mixed Use

**Signage:** Available

**Parking:** 2 – 4 spaces



**overview**



floor plan

premises





520 PEARL ST.

La Corriente  
CEVICHERIA NAIS

858 BURGER

Pizza  
ON PEARL  
TASTE THE QUALITY

THE TACO STAND  
HECHO A MANO

Fresheria

Mitch's SURF SHOP  
La Jolla

PopUp  
Bagels

Mary's  
WWW.ORDERMARYS.COM

EL PESCADOR  
FISH MARKET  
LA JOLLA

THE BISHOP'S SCHOOL  
ESTABLISHED 1909

sammys  
FOOD & WINE

area



Residential Population: 44,066



Business Population: 110,665



Average Household Income: \$220,090



Average Home Value: \$1,702,198

\*\* Information obtained within  
3-mile radius to subject site

*"(La Jolla) village has started gobbling up an unreasonable amount of top-tier talent, Michelin's and James Beards and Top 50s. It harkens back to the '90s, when LJ and Hillcrest were the peak of the food scene."*

*- San Diego Magazine*



Disclaimer - This document has been prepared by Next Wave Commercial Real Estate, Inc. for advertising and general information only. The information included has been obtained from sources believed to be reliable, and while we do not doubt its accuracy, we have not verified it and make no guarantees, representations or warranties of any kind, expressed or implied, regarding the information including, but not limited to, warranties of content, accuracy and reliability. Any projections, opinions, assumptions or estimates used are for example only and do not represent the current or future performance of the property. Any interested party with their advisor(s) should conduct a careful, independent investigation of the property to determine to your satisfaction the suitability of the property for their needs.

**contact**

**Dino De Salvo**  
dino@nextwavecommercial.com  
CA Lic. #02035557  
[nextwavecommercial.com](http://nextwavecommercial.com)

Next Wave Commercial  
6830 La Jolla Blvd. #201  
La Jolla, CA 92037  
CA Lic. #02010077

619.326.4400

