

7301 S. SANTA FE AVENUE
OKLAHOMA CITY, OK 73129



SITE

SANTA FE AVENUE 9,269 VPD

FUTURE RETAIL ACCESS ROAD

FUTURE RETAIL DEVELOPMENT

SHIELDS BOULEVARD

INTERSTATE 240

SE 74TH STREET

106,191 VPD

122,372 VPD

8,925 VPD

17,503 VPD

SE 79TH STREET

1.33 Acres MOL For Sale or Ground Lease
Call For Pricing

NAIRED COMMERCIAL REAL ESTATE

405.840.0600 | NAILED.COM

DAVID HARTNACK
405.761.8955
DAVID@NAILED.COM

SAM SWANSON
405.208.2046
SAM@NAILED.COM

SAMUEL DUNHAM
405.207.7286
SAMUEL@NAILED.COM



PROPERTY OVERVIEW

LOT SIZE 1.33 ACRES +/-

ZONING C-3

- Immediate Access to I-240 & I-35
- Across the Street from Future Retail Development

DEMOGRAPHICS



POPULATION

1 MILE: 8,098
 3 MILES: 95,527
 5 MILES: 231,457



AVERAGE HOUSEHOLD INCOME

1 MILE: \$54,424
 3 MILES: \$57,335
 5 MILES: \$64,184



TOTAL HOUSEHOLDS

1 MILE: 3,198
 3 MILES: 35,666
 5 MILES: 85,237

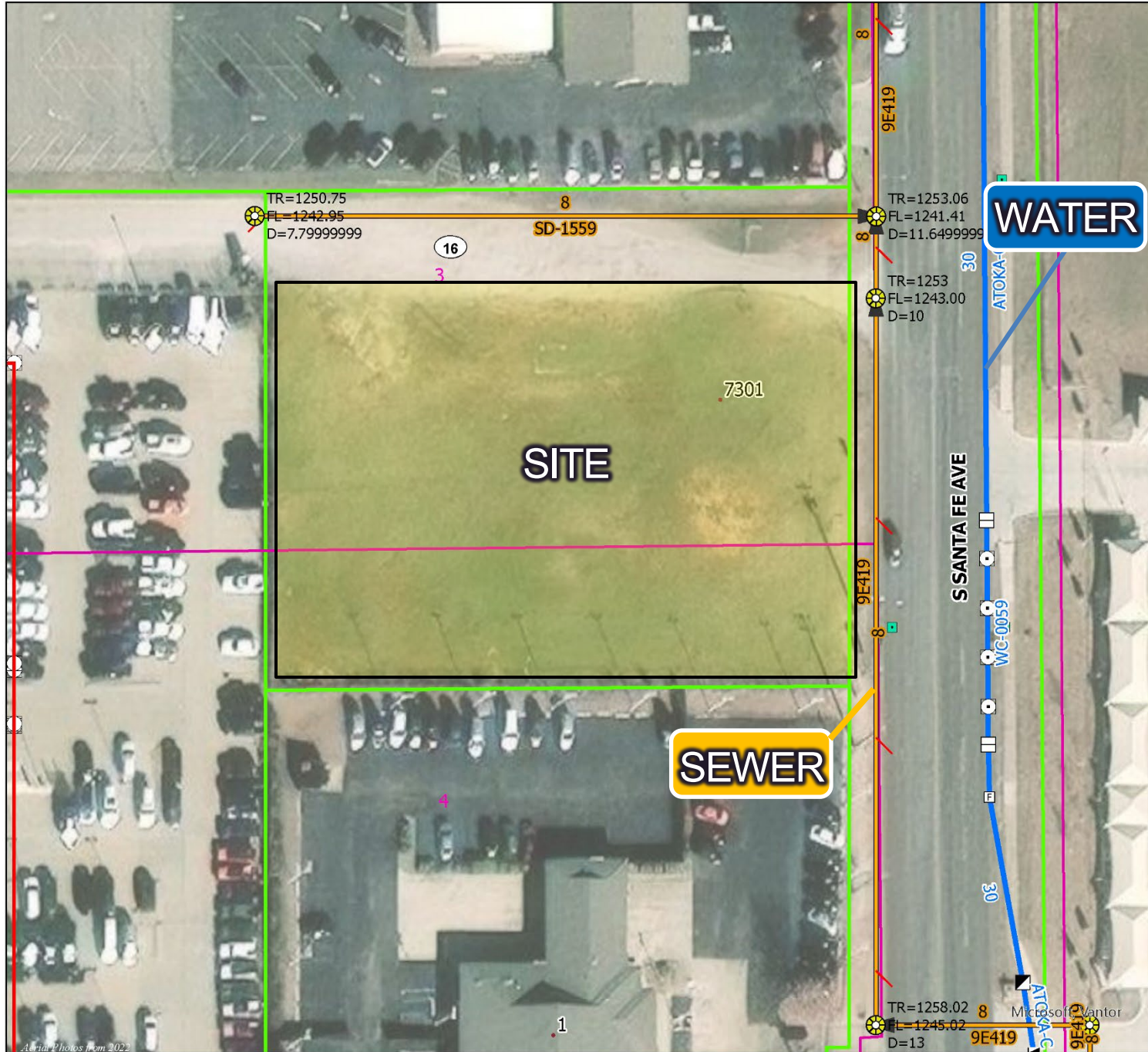


0.25 MILE FROM I-240
 1.5 MILES FROM I-35
 3.5 MILES FROM I-44

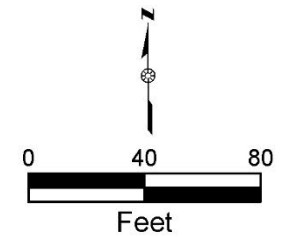
7301 S. SANTA FE AVENUE AERIAL



7301 S. SANTA FE AVENUE WATER & SEWER MAP



- Legend
- Manhole, Standard
 - Water Main



Neither the City nor any of its Trusts nor any of their employees, officers, or agents warrant or represent that the information or data on this document is accurate or appropriate for use or re-use for any purpose. The user of this document assumes the sole duty and full responsibility for the verification of the information and data contained therein. Any use of reliance upon this document of the information or data contained therein is solely, totally, and exclusively at the users own risk.