

4970 | ROBERT J MATHEWS PARKWAY  
SUITE 180 | EL DORADO HILLS, CA

FOR LEASE



±2,825 SF FLEX CONDO | EL DORADO HILLS, CA

**HEATH E. CHARAMUGA**

President | Lic. 01189551

916.716.3037

[Heath@Epic-REA.com](mailto:Heath@Epic-REA.com)

[www.Epic-REA.com](http://www.Epic-REA.com)

**GRANT DEARY**

Associate | Lic. 02227830

916.599.2239

[Grant@Epic-REA.com](mailto:Grant@Epic-REA.com)

[www.Epic-REA.com](http://www.Epic-REA.com)



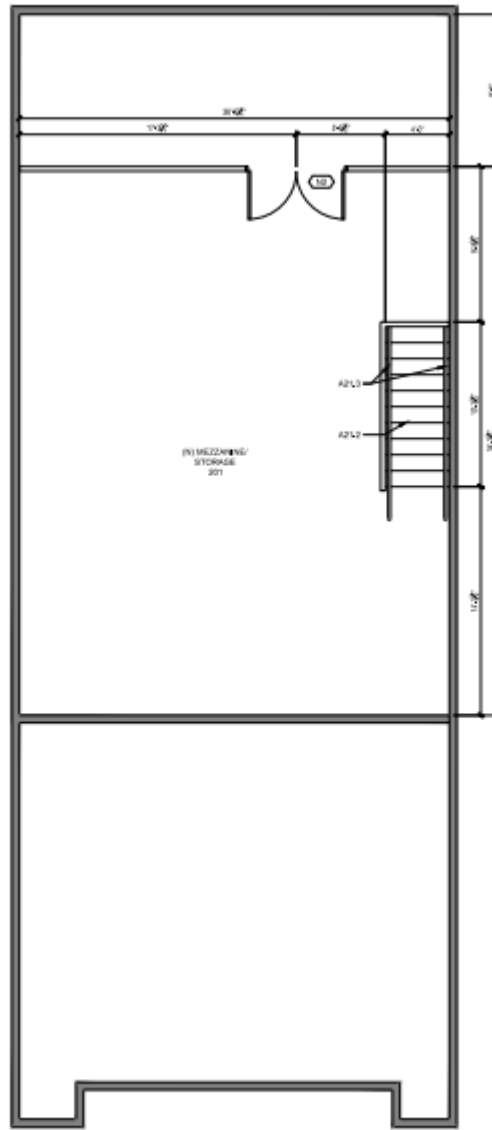
# 4970 ROBERT J MATHEWS PARKWAY EL DORADO HILLS, CA 95762

## FEATURES

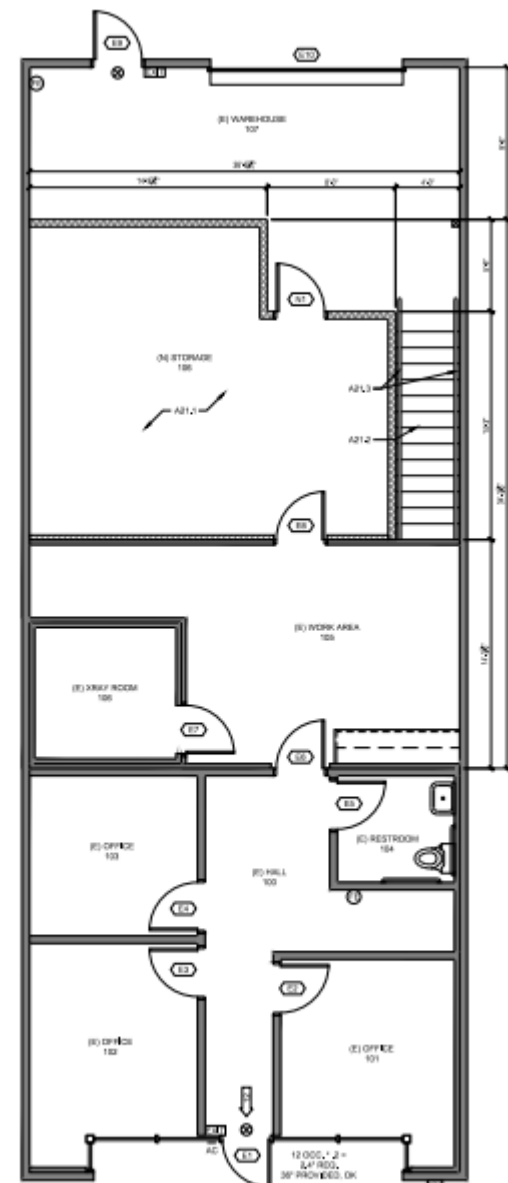
- ±2,825 SF Flex Condo, Suite 180
- 15' Roll-Up Door
- 4 Private Offices
- Work Area, Storage Room, and Warehouse
- Quick access to Hwy 50, retail, and amenities
- APN: 117-560-008
- Zoned R&D - El Dorado County Zoning Code
- Click the YouTube link for a video tour



FLOOR PLAN



2 MEZZANINE FLOOR PLAN  
1/4" = 1'-0"



1 FIRST FLOOR PLAN  
1/4" = 1'-0"

4970

ROBERT J MATHEWS PARKWAY  
SUITE 180 | EL DORADO HILLS, CA





GOLDEN FOOTHILL PKWY

HILLSDALE CIR

ROBERT J MATHEWS PKWY

4970

ROBERT J MATHEWS PARKWAY  
SUITE 180 | EL DORADO HILLS, CA





WHITE ROCK RD

LATROBE RD

SITE

EL DORADO HILLS BUSINESS PARK

Broadridge

**EL DORADO HILLS TOWN CENTER**

El Dorado Hills Town Center is a vibrant, 100-acre mixed-use destination offering over 1 million square feet of retail, dining, office, and entertainment amenities in the heart of El Dorado Hills.

This information has been obtained from reliable sources but has not been verified for accuracy or completeness. Epic Real Estate Advisors, Inc. makes no guarantee, representation or warranty and accepts no responsibility or liability for the accuracy, completeness, or reliability of the information contained herein. You should conduct a careful, independent investigation of the property and verify all information. Any reliance on this information is solely at your own risk. Epic Real Estate Advisors, Inc. and the Epic Real Estate Advisors, Inc. logo are service marks of Epic Real Estate Advisors, Inc. All other marks displayed on this document are the property of their respective owners, and the use of such marks does not imply any affiliation with or endorsement of Epic Real Estate Advisors, Inc. Photos herein are the property of their respective owners. Use of these images without the express written consent of the owner is prohibited.

**HEATH E. CHARAMUGA**  
 President | Lic. 01189551  
 916.716.3037  
 Heath@Epic-REA.com  
 www.Epic-REA.com

**GRANT DEARY**  
 Associate | Lic. 02227830  
 916.599.2239  
 Grant@Epic-REA.com  
 www.Epic-REA.com

