

Office | For Lease

CBRE

# Suite 300

2150 Scarth Street, Regina

#300-2150 Scarth Street  
Regina, SK  
[www.cbre.ca/saskatchewan](http://www.cbre.ca/saskatchewan)

3,600 SF Downtown Office Space



#300-2150 Scarth Street

Regina, SK

# The Offering

## 300-2150 Scarth Street

This site is located in the downtown district of Regina, ideal for office business operations due to its proximity to convenient amenities including restaurants, hotels, and various retail & commercial establishments.

This particular opportunity offers 3,600 square feet with a large area dedicated to open-concept workspace and private offices around the perimeter. The space is able to facilitate an environment of team collaboration and productivity with a large boardroom, a separate lunch room/kitchen, and storage space. Up to 10 parking stalls are conveniently available behind the building at \$150 per stall.

# \$12.00

Lease Rate PSF

# \$12.00

Operating Costs PSF

# 3,600

Space Area (SF)

## Features

### + Location

- 2150 Scarth Street,  
Regina, SK

### + Size

- 3,600 SF Area

### + Lease Rate

- \$12.00 PSF

### + Operating Costs

- \$12.00 PSF

### + Parking

- 10 stalls at \$150/stall

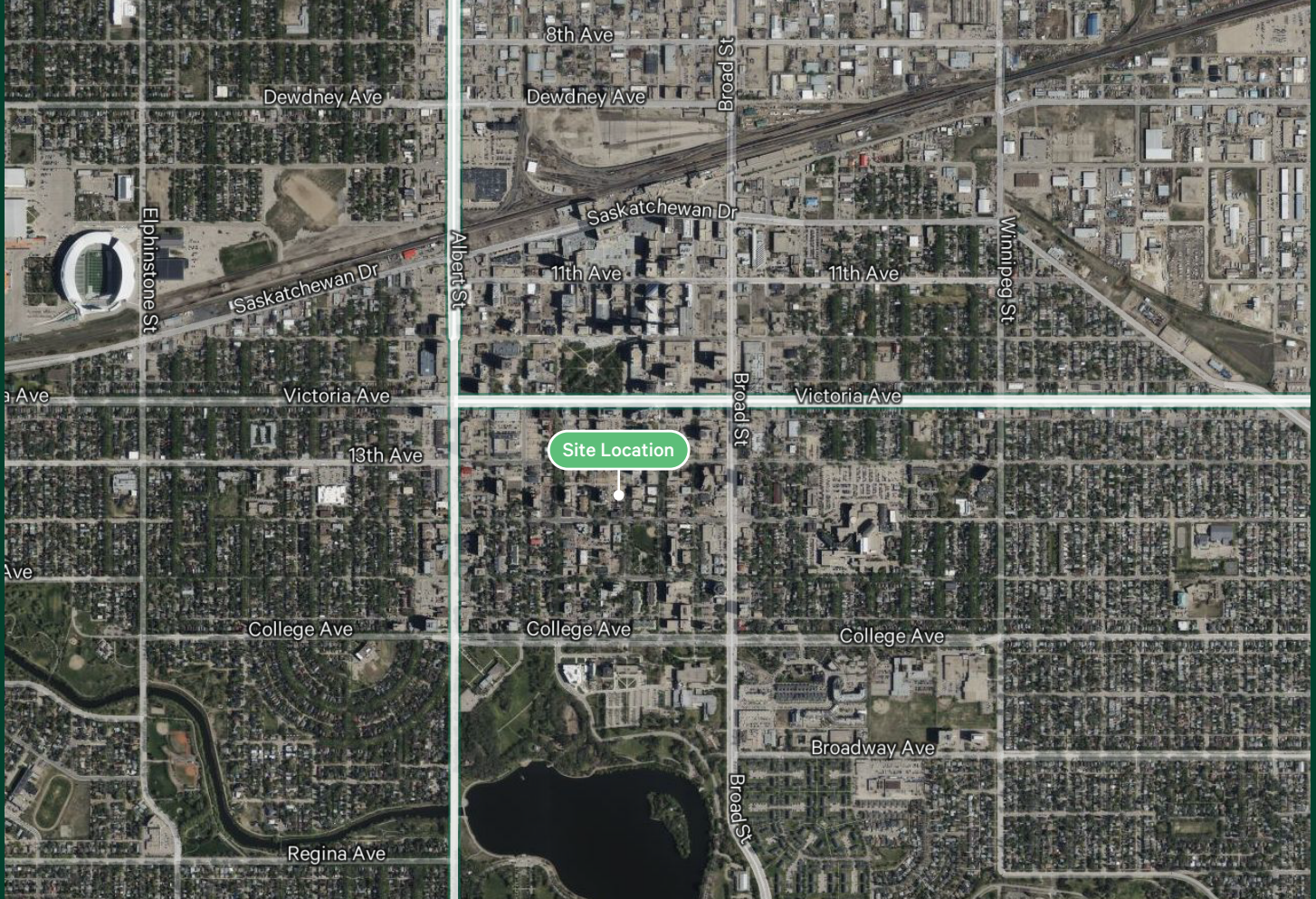
### + Additional Features

- 4 Large Offices
- 1 Large Boardroom
- Lunch Room + Kitchen
- Server Room
- Furnishing Available

For Lease



# 2150 Scarth Street



## Contact Us

**Walker Moulding**

Senior Vice President  
+1 306 501 0609

Walker.Moulding@cbre.com

**Erik Mehlsen**

Sales Associate  
+1 306 539 9754

Erik.Mehlsen@cbre.com

© 2024 CBRE, Inc. All rights reserved. This disclaimer shall apply to CBRE Limited, and to all divisions of the Corporation ("CBRE"). The information set out herein (the "Information") has not been verified by CBRE, and CBRE does not represent, warrant or guarantee the accuracy, correctness and completeness of the Information. CBRE does not accept or assume any responsibility or liability, direct or consequential, for the Information or the recipient's reliance upon the Information. The recipient of the Information should take such steps as the recipient may deem necessary to verify the Information prior to placing any reliance upon the Information. The Information may change and any property described in the Information may be withdrawn from the market at any time without notice or obligation to the recipient from CBRE.