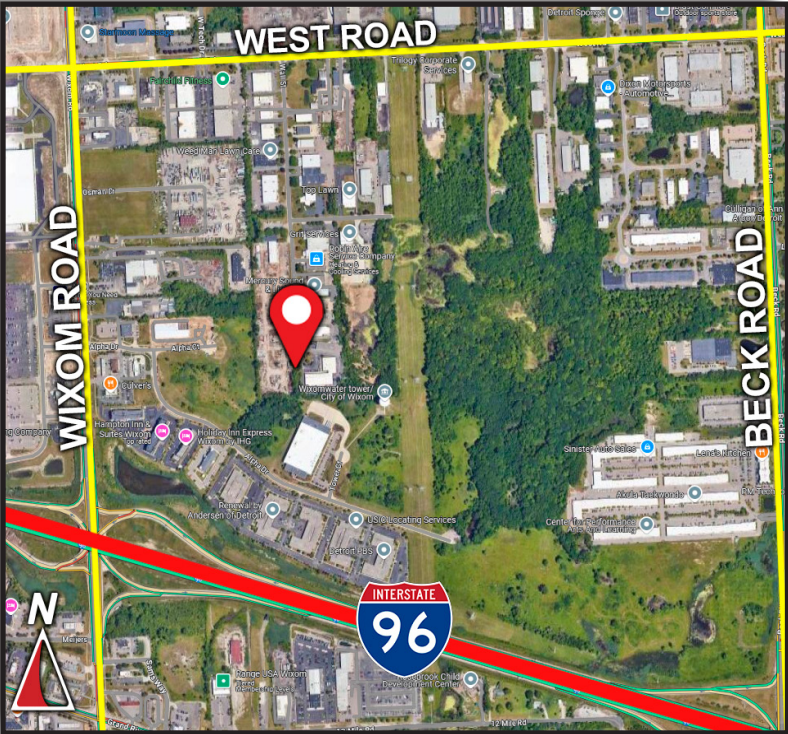




# FOR LEASE

28712 Wall Street  
Wixom, Michigan  
2,580 SF Light Industrial



- 2,580 Square foot unit
- Quick access to I-96
- Immediate occupancy
- Zoned light industrial
- 16' clear height
- One (1)12'x14' grade level door
- Gross lease rate includes real estate taxes, building insurance, lawn care and snow removal
- \$2,580 per month Gross

## Burger & Company

248.536.2888  
www.burgercollc.com

38345 W. 10 Mile Road, Suite 100  
Farmington Hills, MI 48335

John O'Brien  
Principal  
Cell: 248.342.8383  
john@burgercollc.com

Information contained herein is deemed to be reliable but is not guaranteed and may be withdrawn at any time.

# FOR LEASE

28712 Wall Street  
Wixom, MI 48393



## BUILDING SPECIFICATIONS

<b>Location</b>	I-96 & Wixom	<b>Square Feet Available</b>	2,580
<b>County</b>	Oakland	<b>Office Square Feet</b>	400 SF
<b>Zoning</b>	Light Industrial	<b>Warehouse Square Feet</b>	2,180 SF
<b>Clear Height</b>	16'	<b>Grade Level Doors</b>	One (1) 12' x 14' (Power)
<b>Lighting</b>	Fluorescent	<b>Dock Doors</b>	No
<b>Heating</b>	Radiant Tube	<b>Power</b>	3 Phase
<b>Parking</b>	Ample	<b>Restrooms</b>	One
<b>Floor Drains</b>	Yes		

### Description

- 2,580 Square foot unit
- Quick access to I-96
- Immediate occupancy
- Zoned light industrial
- 16' clear height
- One (1)12'x14' grade level door
- Gross lease rate includes real estate taxes, building insurance, lawn care and snow removal

<b>Lease Rate</b>	\$ 12.00 PSF
<b>Monthly</b>	\$ 2,580.00
<b>Lease Type</b>	Gross + Utilities
<b>Availability</b>	Immediate

**Burger**

& COMPANY

248.536.2888

[www.burgercollc.com](http://www.burgercollc.com)

38345 W. 10 Mile Road, Suite 100  
Farmington Hills, MI 48335

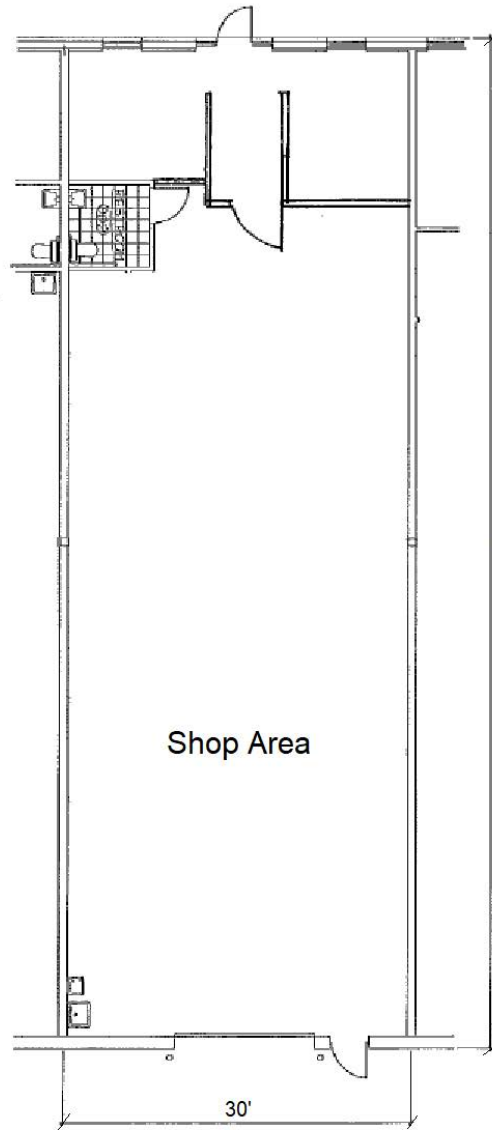
John O'Brien  
Principal  
Cell: 248.342.8383  
[john@burgercollc.com](mailto:john@burgercollc.com)

Information contained herein is deemed to be reliable but is not guaranteed and may be withdrawn at any time.

# FOR LEASE

28712 Wall Street  
Wixom, MI 48393

## FLOOR PLAN



28712 Wall St  
2,580 Sq. Ft.

**Burger**

& COMPANY

248.536.2888

[www.burgercollc.com](http://www.burgercollc.com)

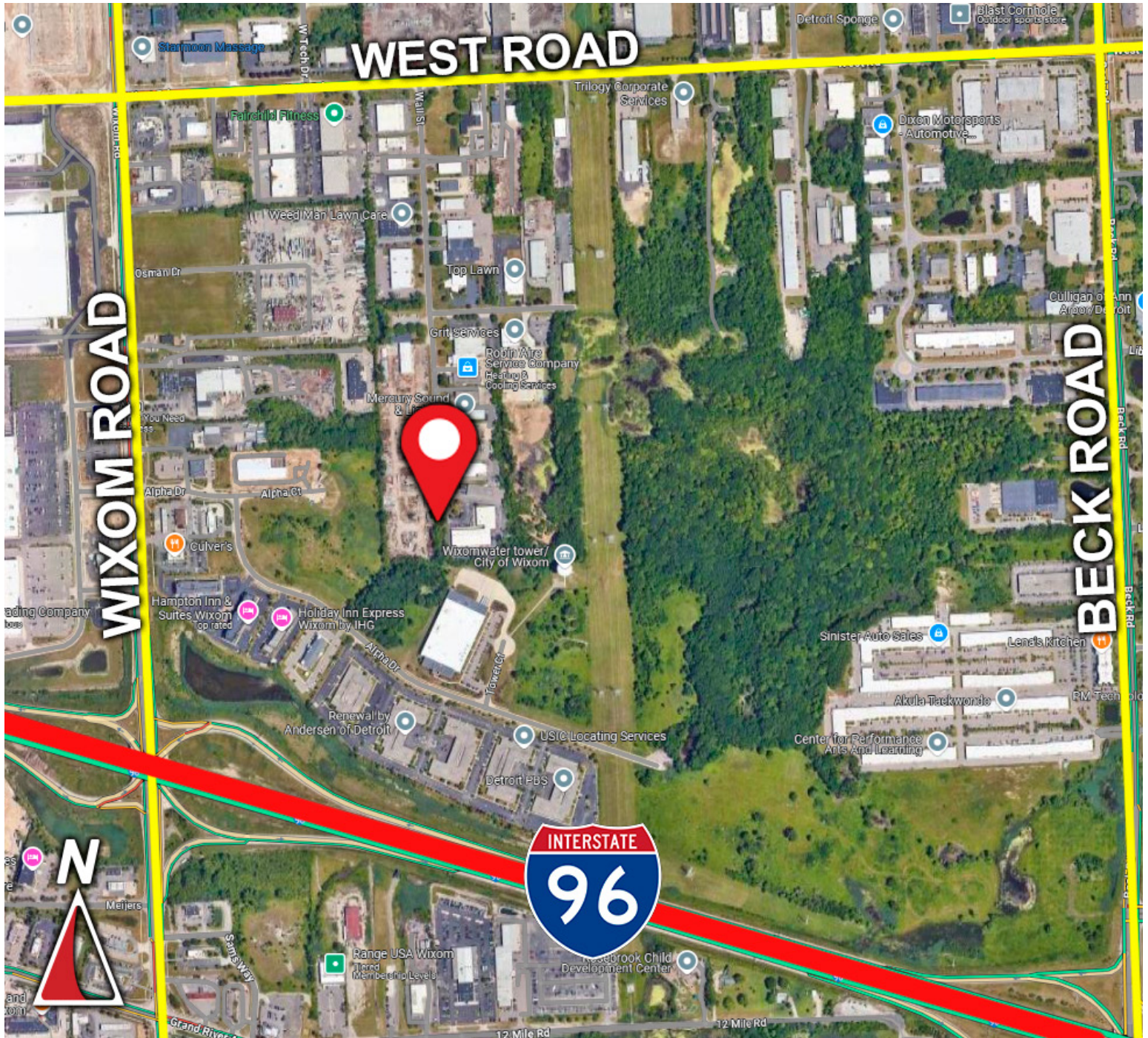
38345 W. 10 Mile Road, Suite 100  
Farmington Hills, MI 48335

John O'Brien  
Principal  
Cell: 248.342.8383  
[john@burgercollc.com](mailto:john@burgercollc.com)

Information contained herein is deemed to be reliable but is not guaranteed and may be withdrawn at any time.

# FOR LEASE

28712 Wall Street  
Wixom, MI 48393



**Burger**

& COMPANY

248.536.2888

[www.burgercollc.com](http://www.burgercollc.com)

38345 W. 10 Mile Road, Suite 100  
Farmington Hills, MI 48335

John O'Brien  
Principal  
Cell: 248.342.8383  
[john@burgercollc.com](mailto:john@burgercollc.com)

Information contained herein is deemed to be reliable but is not guaranteed and may be withdrawn at any time.