

# FOR LEASE



# 2290 White Oak Circle

Aurora, Illinois 60502

## Q2 2026 DELIVERY



**Chris Mergenthaler**  
Vice President

+1 630 993 3862

[cmergenthaler@darwinpw.com](mailto:cmergenthaler@darwinpw.com)

**Tommy Engel**  
Associate

+1 630 993 3863

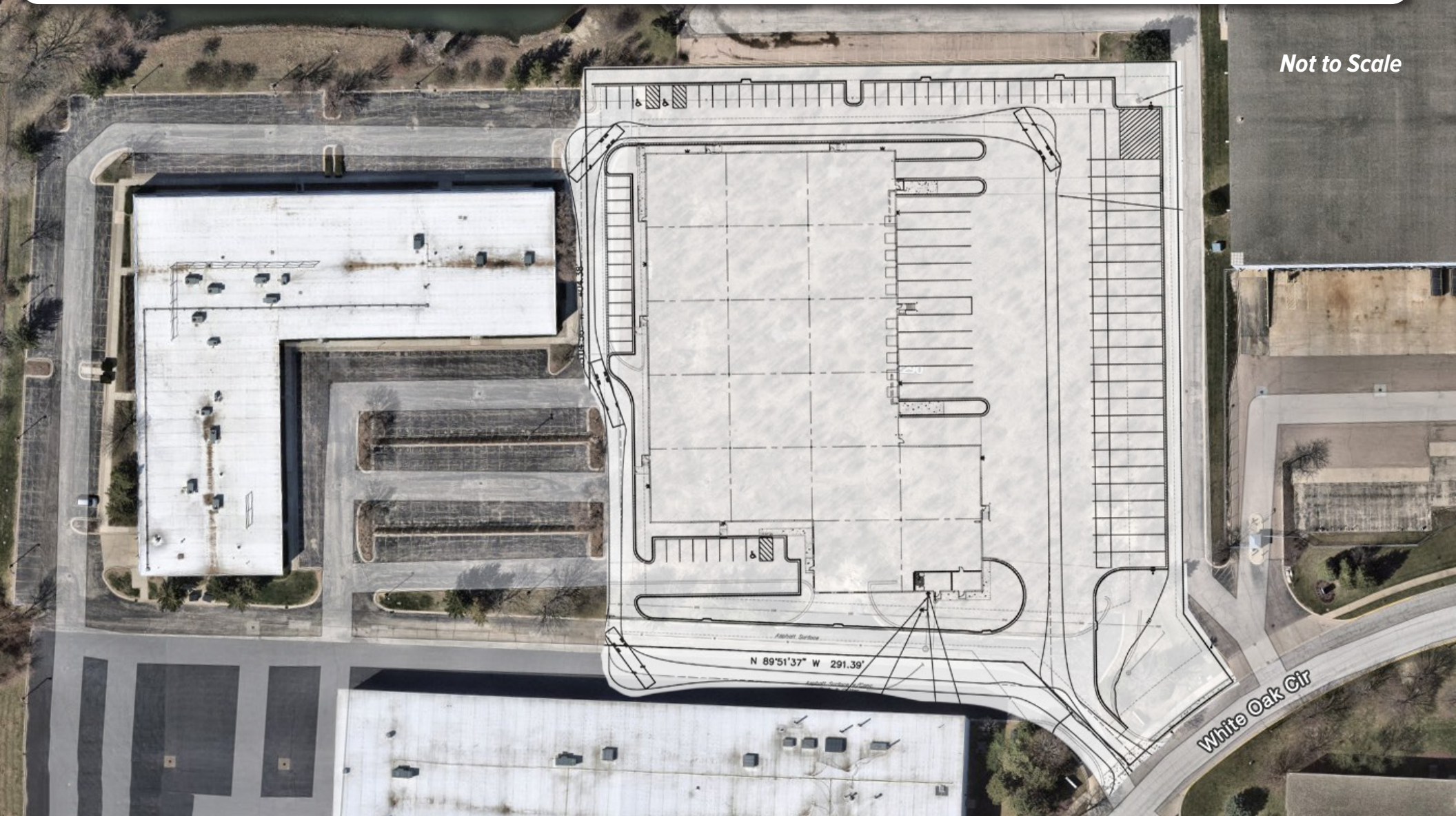
[tengel@darwinpw.com](mailto:tengel@darwinpw.com)

970 N Oaklawn Ave, Suite 100 | Elmhurst, IL 60126 | Tel: 630.782.9520 | [darwinpw.com](http://darwinpw.com)

Submitted subject to error, change in status, or withdrawal without notice. | Officers of this firm have an ownership interest in this property.

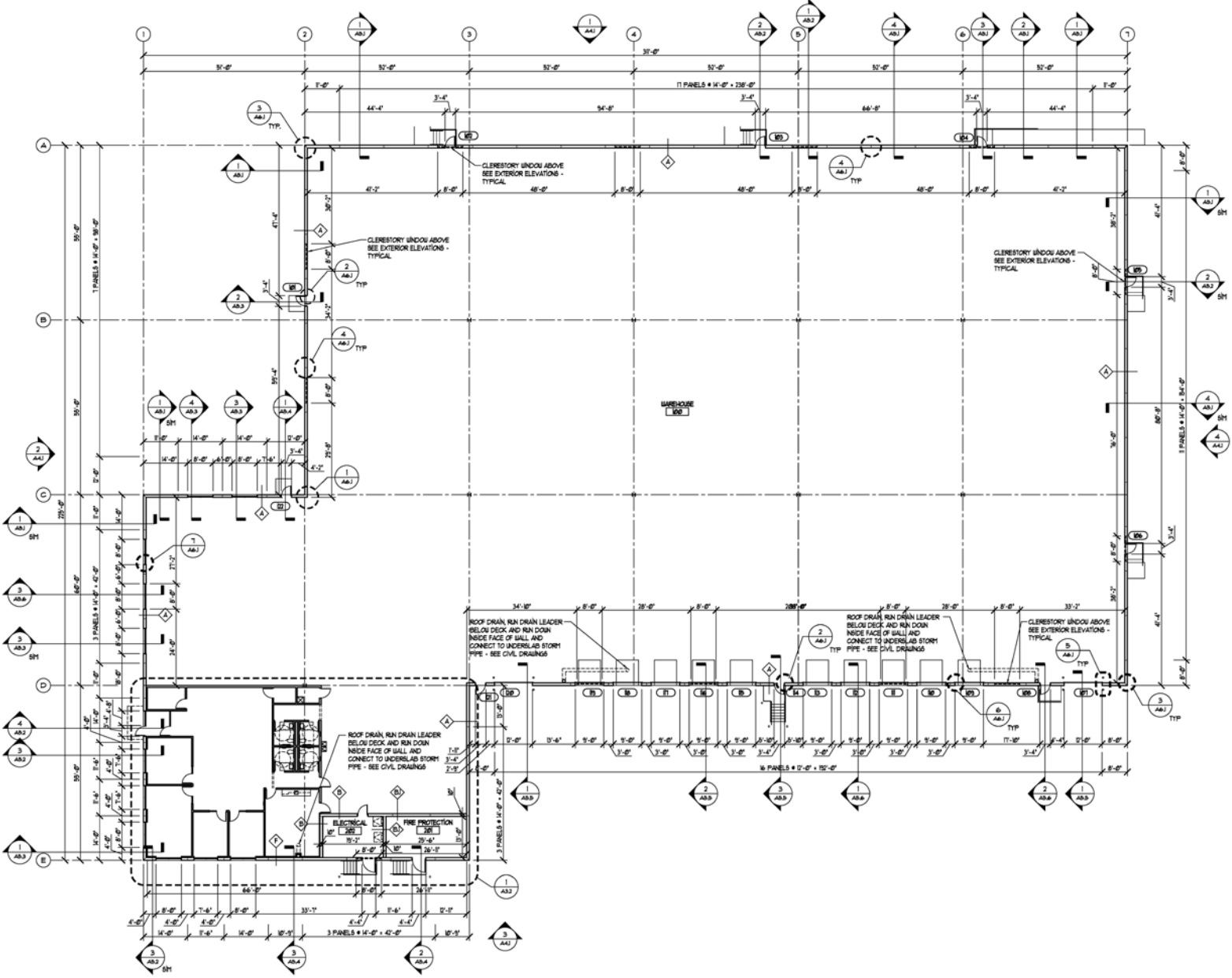
# Property Specifications

<b>Building SF:</b> 52,870 SF	<b>Office:</b> 2,500 SF (expandable)	<b>Loading:</b> 10 Dock Levelers (exp) 2 Drive-in doors	<b>Sprinklers:</b> ESFR
<b>Land Size:</b> 3.95 Acres	<b>Ceiling Height:</b> 32' Clear height	<b>Trailer Parking:</b> 24 Trailer stalls	<b>Lease Rate:</b> Subject to Offer
<b>Paved Area:</b> See Plans	<b>Power:</b> 2000A @ 480V (or to suit)	<b>Car Parking:</b> 59 Parking Spots	



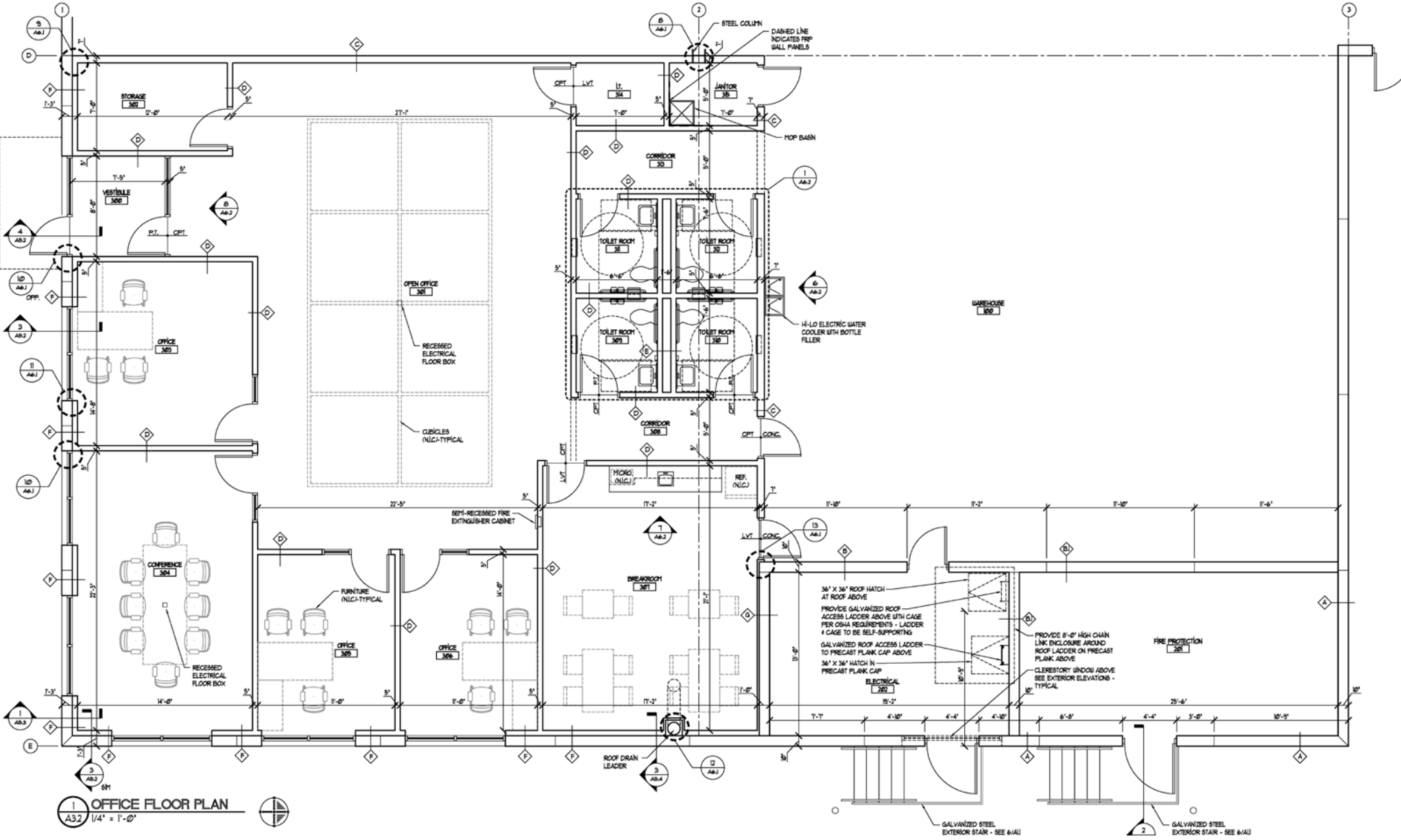
*Not to Scale*

# Property Building Plan



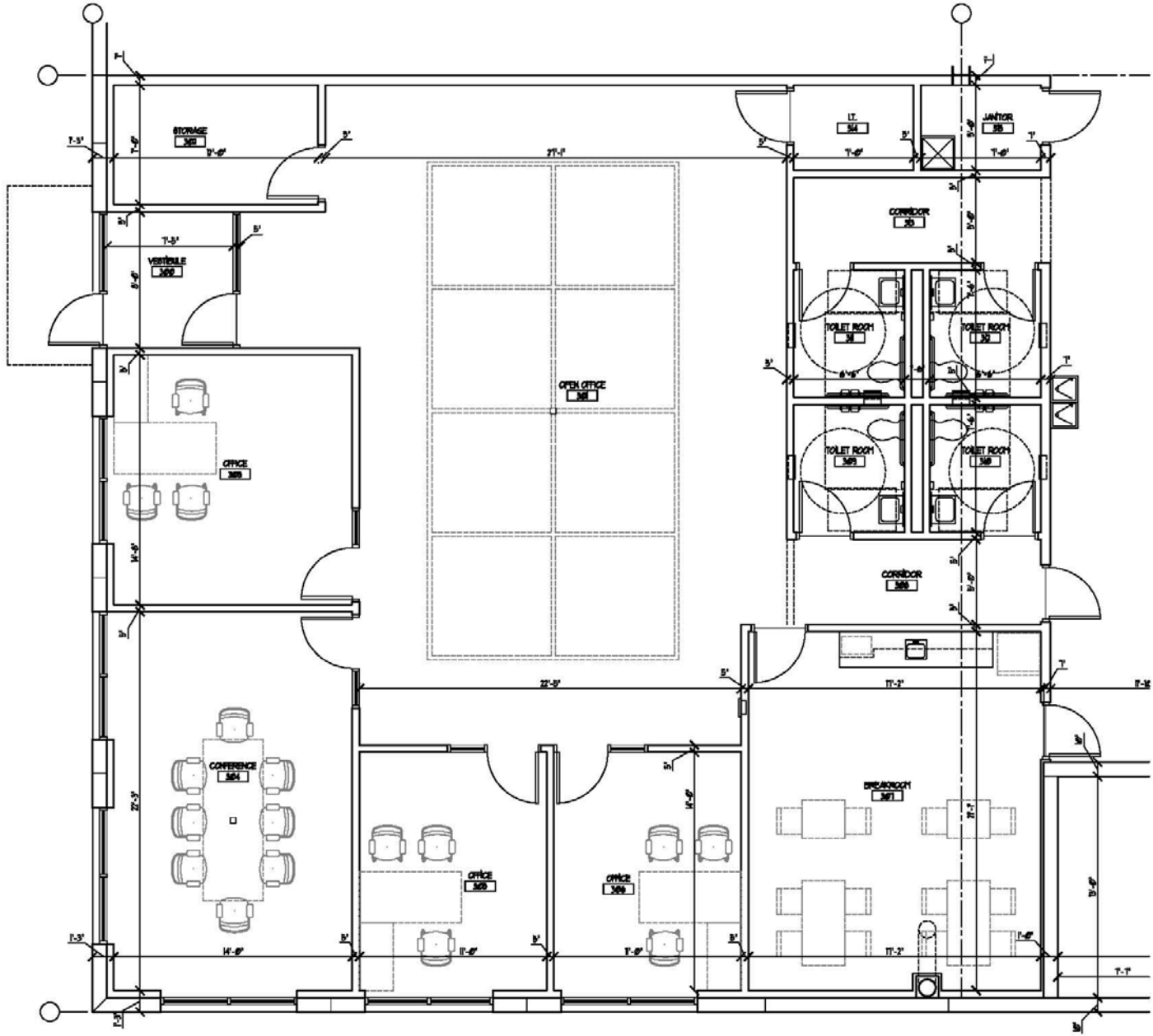
1 BUILDING PLAN  
 AS1 1/16" = 1'-0"

# Property Office Floor Plan



1 OFFICE FLOOR PLAN  
 A3.2 1/4" = 1'-0"

# Property Office Spec Plan



# Local Distances

- █ 1.45 miles to I-88 & Kirk Rd Interchange
- █ 0.8 miles to Diehl Rd & I-88 on Ramp





**Chris Mergenthaler**  
Vice President  
+1 630 993 3862  
cmergenthaler@darwinpw.com

**Tommy Engel**  
Associate  
+1 630 993 3863  
tengel@darwinpw.com



**DARWINPW**

R E A L T Y

---

CORFAC International