



AVAILABLE FOR LEASE
2 MONTHS FREE RENT WITH A MINIMUM 3-YEAR LEASE TERM

±300 SF - ±315 SF OFFICE SPACES

2001 OMEGA ROAD , SAN RAMON, CA 94583

LOCAL EXPERTISE. INTERNATIONAL REACH. WORLD CLASS.

Mark Rinkle

Principal
mrinkle@lee-associates.com
925-737-4145
LIC NO 01512632

Mike Smith

Principal
mikesmith1@lee-associates.com
925-737-4151
LIC NO 00837386

Kirsten Johnsen

Associate
kjohnsen@lee-associates.com
925-519-7818
LIC NO 02133540



5

PROPERTY HIGHLIGHTS



- Office Building
- Suite 207: ±315 SF
Suite 210: ±300 SF
- Available immediately
- Operable windows
- Signage opportunity



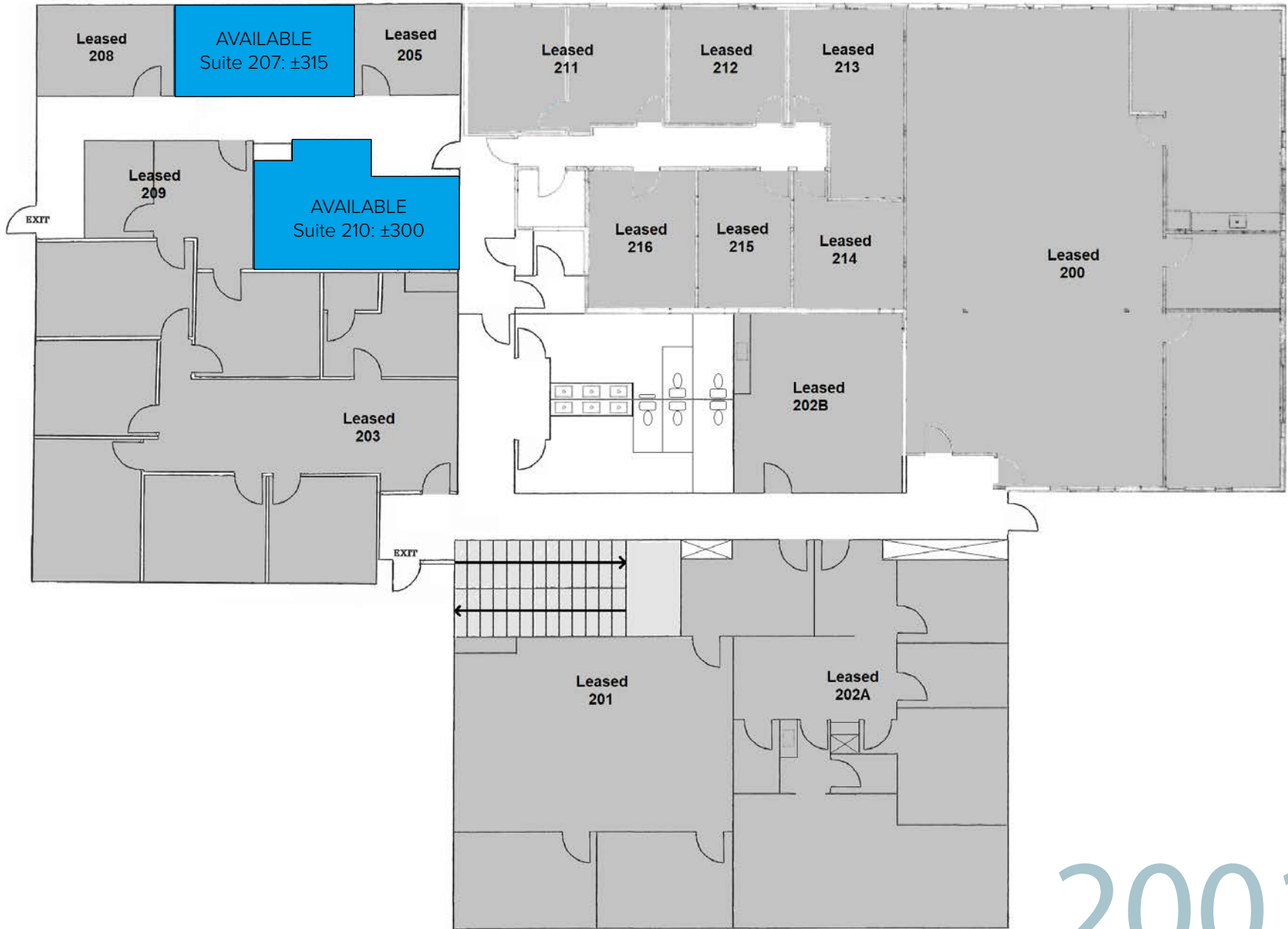
- Some individually controlled HVAC units
- Great views of surrounding hillside
- Parking with some covered spaces
- Excellent freeway access
- Lease rate:
Please refer to Floor Plan

2001
OMEGA ROAD

Suite 207: ±315 SF - \$900/month full service



Suite 210: ±300 SF - \$845/month full service



SITE PLAN

2001
OMEGA ROAD

FOR LEASE

±300 SF - ±315 SF OFFICE SPACES AVAILABLE

2001 OMEGA ROAD | SAN RAMON, CA 94583



Mark Rinkle

Principal
mrinkle@lee-associates.com
925-737-4145
LIC NO 01512632



Mike Smith

Principal
mikesmith1@lee-associates.com
925-737-4151
LIC NO 00837386



Kirsten Johnsen

Associate
kjohnsen@lee-associates.com
925-519-7818
LIC NO 02133540

All information furnished regarding property for sale, rental or financing is from sources deemed reliable, but no warranty or representation is made to the accuracy thereof and same is submitted to errors, omissions, change of price, rental or other conditions prior to sale, lease or financing or withdrawal without notice. No liability of any kind is to be imposed on the broker herein.

Lee & Associates® East Bay, Inc. Corp. ID 01194869 5000 Pleasanton Ave, Suite 220, Pleasanton, CA 94566

LEE-ASSOCIATES.COM / PLEASANTON /

2001 OMEGA ROAD