

# STRATA PLAN OF PARCEL A DISTRICT LOT 166A GROUP 1 NEW WESTMINSTER DISTRICT PLAN BCP6121

B.C.G.S. 926.016

Civic Address:

- 7411 Lowland Drive, Burnaby, BC (Building 1)
- 7413 Lowland Drive, Burnaby, BC (Building 2)
- 7415 Lowland Drive, Burnaby, BC (Building 3)
- 7417 Lowland Drive, Burnaby, BC (Building 4)

### LEGEND

- denotes lead plug found
- denotes standard iron post found
- △ denotes traverse hub set
- Sq.m. denotes square metres
- SL denotes strata lot
- PT denotes part
- PS denotes parking stall
- © denotes common property
- (typ.) denotes typical

Coordinates are shown for mapping purposes only.

All angles shown are 90° or 45° unless shown otherwise.

NAD 83 (CSRS) 4.0.0.BC.1.MVRD

Grid bearings are derived from GNSS observations and are referred to the central meridian of UTM Zone 10 N.

The UTM coordinates and estimated absolute accuracy achieved are derived from dual-frequency GNSS observations to SmartNet RTN network.

This plan shows horizontal ground-level distances unless otherwise specified. To compute grid distances, multiply ground-level distances by the average combined factor of 0.9996026. The average combined factor has been determined based on a mean ellipsoidal elevation of -17 metres.

This plan shows horizontal ground level distances unless otherwise specified. To compute grid distances, multiply ground level distances by the appropriate combined factor as derived from the combined factors in the coordinate table.

The field survey represented by this plan was completed on the 9th day of December, 2025.  
Zheng Tong, BCLS 1011

The buildings shown on this strata plan are within the external boundaries of the land that is the subject of the strata plan.

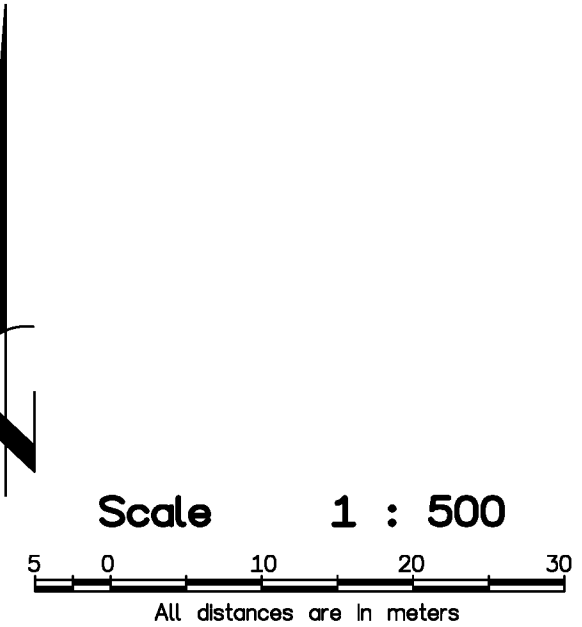
The buildings included in this strata plan have not been previously occupied.

See sheet 2 for building foundation dimensions.  
See floor plan sheets for LCP parking stall dimensions.

This plan lies within the City of Burnaby  
This plan lies within the Metro Vancouver Regional District

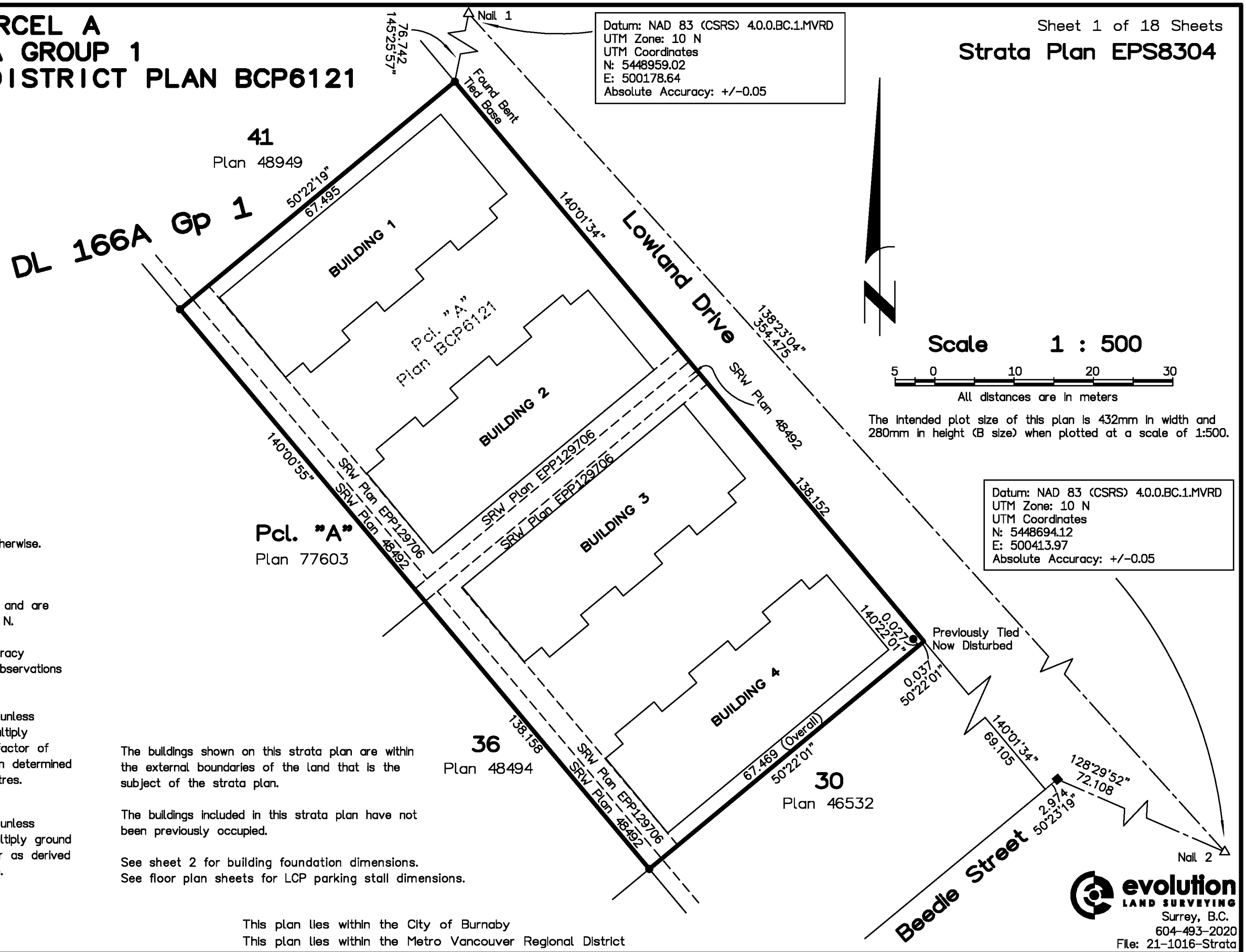
Datum: NAD 83 (CSRS) 4.0.0.BC.1.MVRD  
 UTM Zone: 10 N  
 UTM Coordinates  
 N: 5448959.02  
 E: 500178.64  
 Absolute Accuracy: +/-0.05

Sheet 1 of 18 Sheets  
 Strata Plan EPS8304



The intended plot size of this plan is 432mm in width and 280mm in height (B size) when plotted at a scale of 1:500.

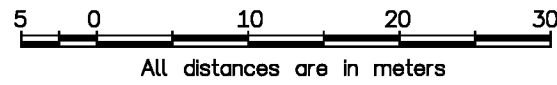
Datum: NAD 83 (CSRS) 4.0.0.BC.1.MVRD  
 UTM Zone: 10 N  
 UTM Coordinates  
 N: 5448694.12  
 E: 500413.97  
 Absolute Accuracy: +/-0.05



# Strata Plan EPS8304

## Building Foundations

Scale 1 : 500



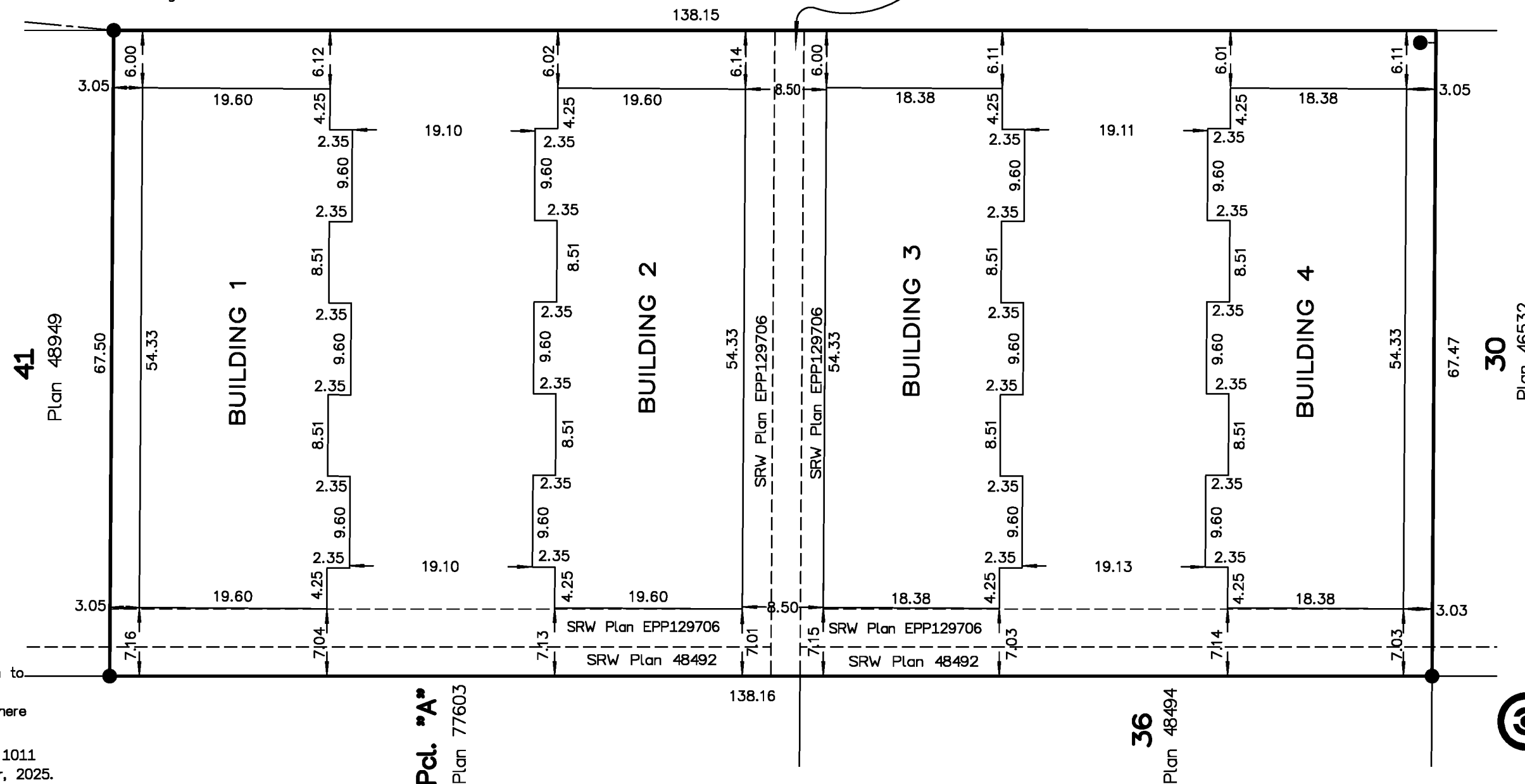
The intended plot size of this plan is 432mm in width and 280mm in height (B size) when plotted at a scale of 1:500.

See level 1 floor plans for LCP parking stall details.

Offsets to property lines are perpendicular thereto and are measured to the exterior face of the building foundation walls.

### Lowland Drive

SRW Plan 48492



Note:  
Dimensions are shown to exterior of concrete foundations except where otherwise noted.

Zheng Tong, B.C.L.S. 1011  
9th day of December, 2025.

Pcl. "A"  
Plan 77603

36  
Plan 48494

**evolution**  
LAND SURVEYING  
Surrey, B.C.  
604-493-2020  
File: 24-2143-Strata

info@evolutionlandsurveying.com  
https://evolutionlandsurveying.com

# Strata Plan EPS8304

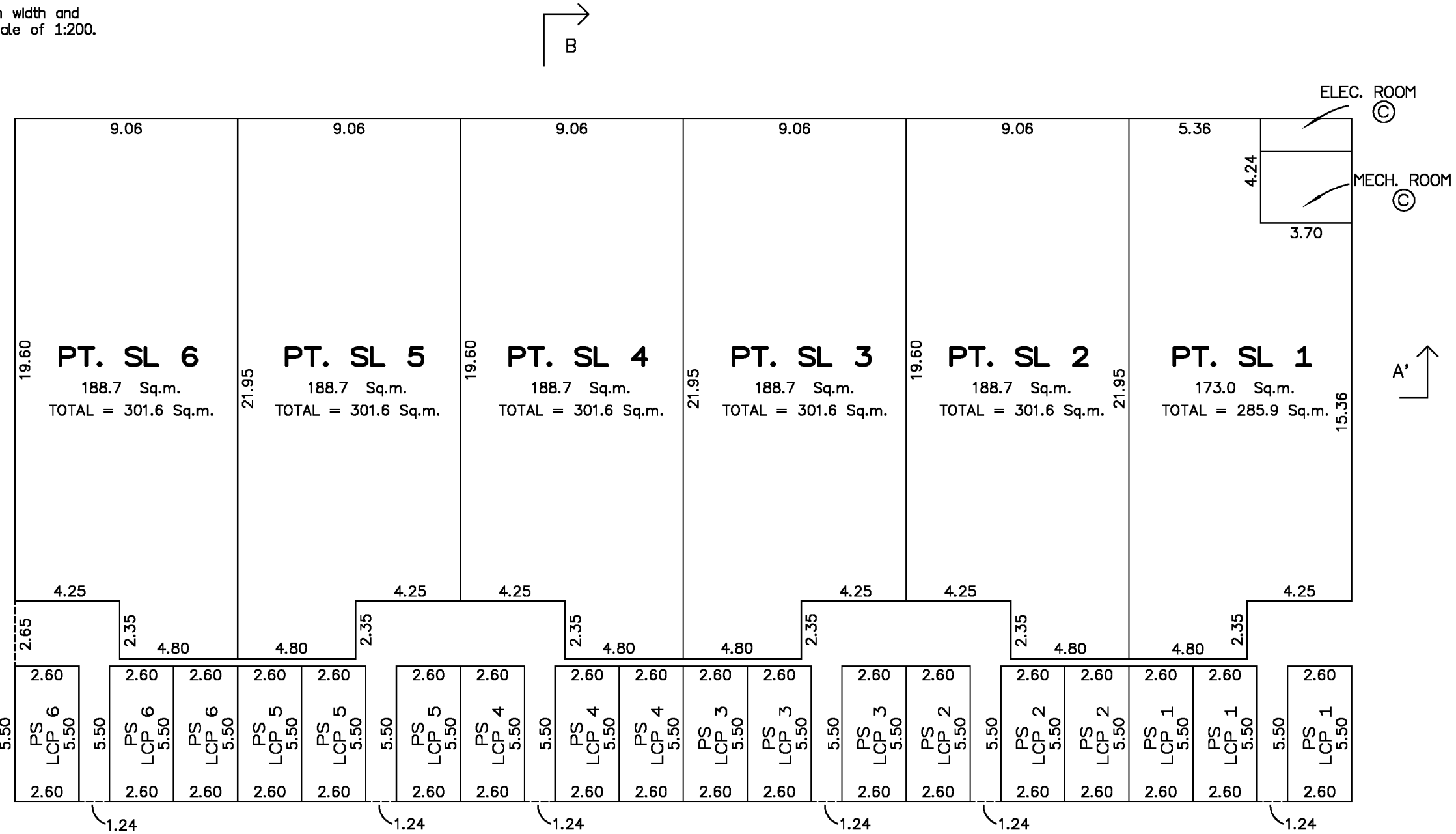
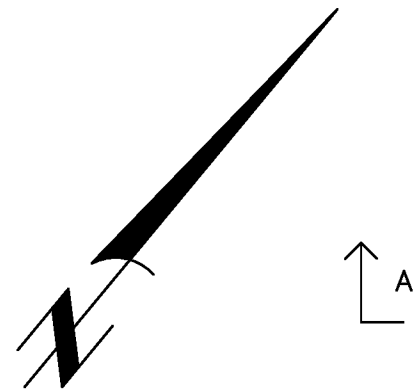
## Level 1-Building 1

Scale 1 : 200



All distances are in meters

The intended plot size of this plan is 432mm in width and 280mm in height (B size) when plotted at a scale of 1:200.



Section arrows on this plan point in the direction of view.

Strata lot boundary dimensions are shown to outside face of structural portion of exterior walls and the centerline of demising walls between strata lots.

Zheng Tong, B.C.L.S. 1011  
9th day of December, 2025.



info@evolutionlandsurveying.com  
https://evolutionlandsurveying.com

### Level 1-Building 2

Scale 1 : 200

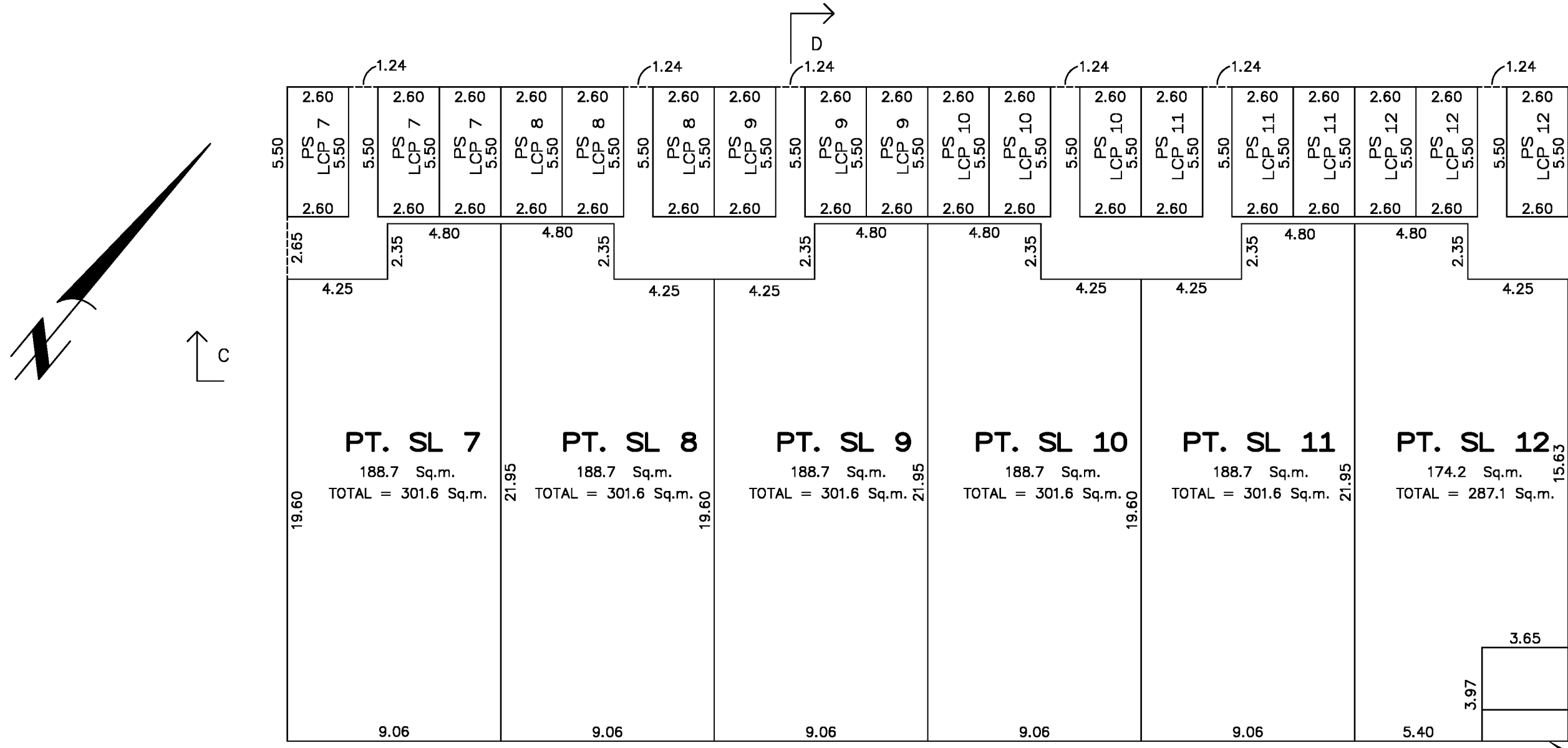


All distances are in meters

The Intended plot size of this plan is 432mm in width and 280mm in height (B size) when plotted at a scale of 1:200.

Sheet 4 of 18 Sheets

### Strata Plan EPS8304



Section arrows on this plan point in the direction of view.

Strata lot boundary dimensions are shown to outside face of structural portion of exterior walls and the centerline of demising walls between strata lots.

Zheng Tong, B.C.L.S. 1011  
9th day of December, 2025.

**evolution**  
LAND SURVEYING  
Surrey, B.C.  
604-493-2020  
File: 21-1016-Strata

info@evolutionlandsurveying.com  
https://evolutionlandsurveying.com

Sheet 5 of 18 Sheets  
Strata Plan EPS8304

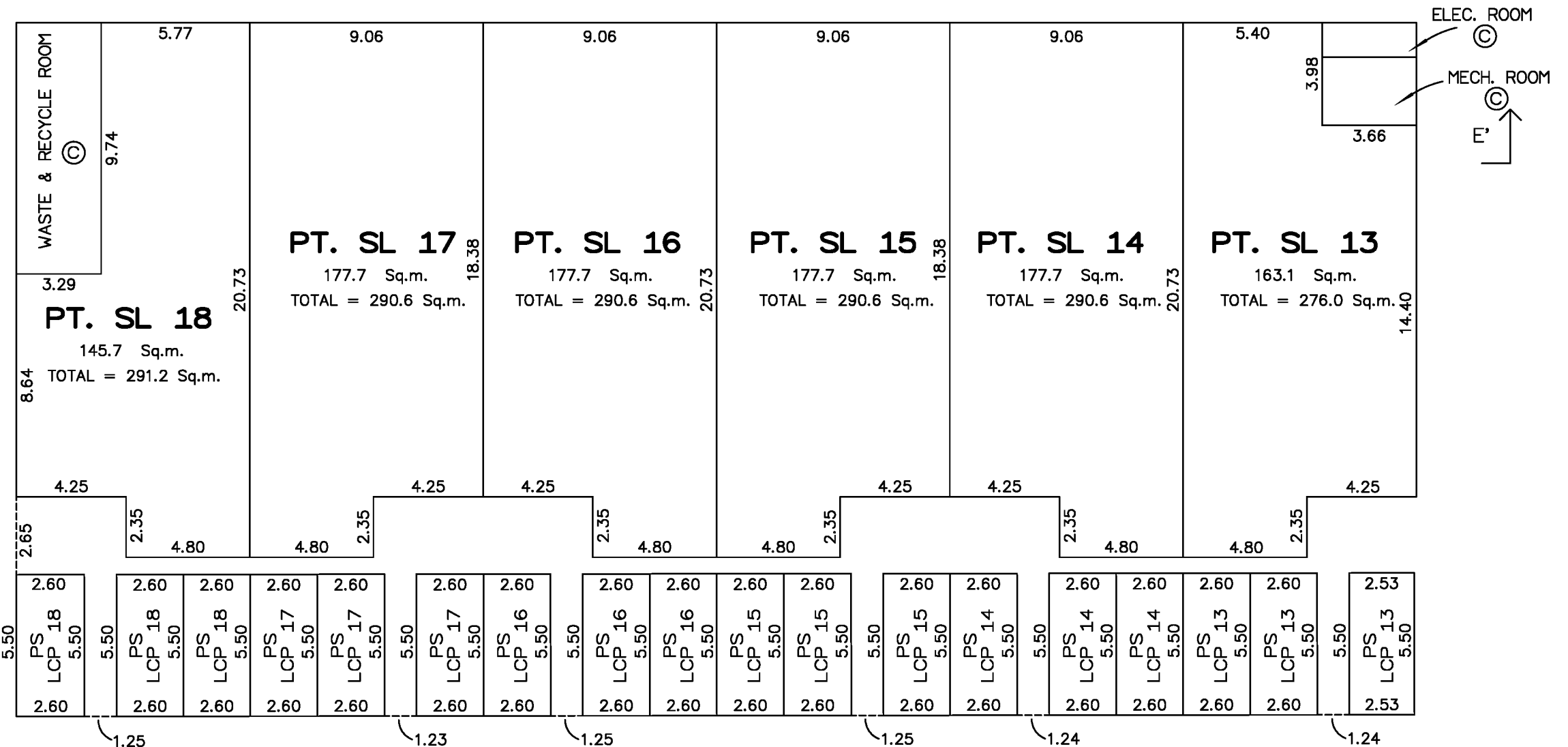
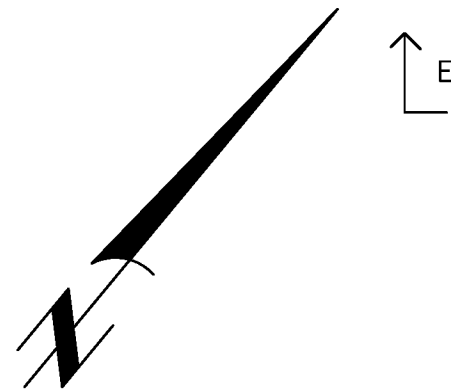
Level 1-Building 3

Scale 1 : 200



All distances are in meters

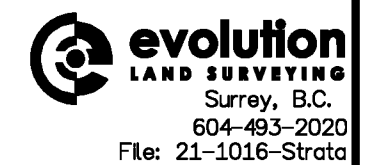
The intended plot size of this plan is 432mm in width and 280mm in height (B size) when plotted at a scale of 1:200.



Section arrows on this plan point in the direction of view.

Strata lot boundary dimensions are shown to outside face of structural portion of exterior walls and the centerline of demising walls between strata lots.

Zheng Tong, B.C.L.S. 1011  
9th day of December, 2025.



Info@evolutionlandsurveying.com  
https://evolutionlandsurveying.com

# Level 1-Building 4

Sheet 6 of 18 Sheets

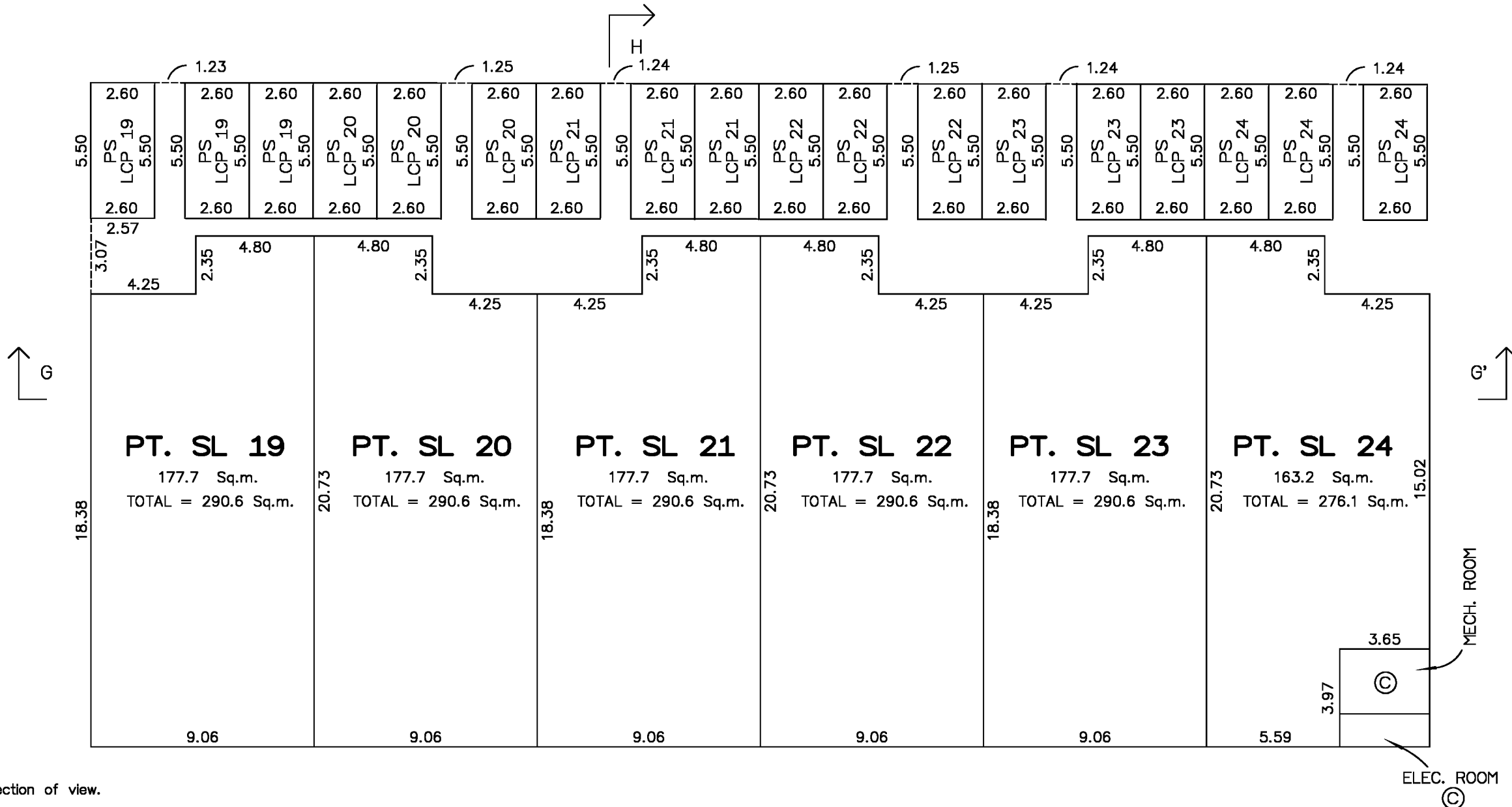
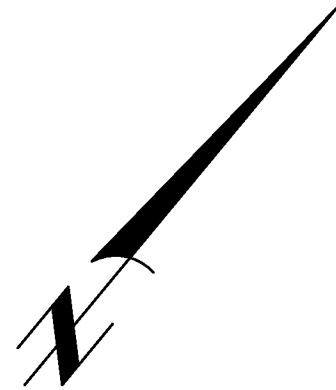
## Strata Plan EPS8304

Scale 1 : 200



All distances are in meters

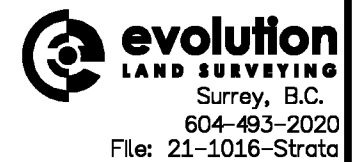
The intended plot size of this plan is 432mm in width and 280mm in height (B size) when plotted at a scale of 1:200.



Section arrows on this plan point in the direction of view.

Strata lot boundary dimensions are shown to outside face of structural portion of exterior walls and the centerline of demising walls between strata lots.

Zheng Tong, B.C.L.S. 1011  
9th day of December, 2025.



info@evolutionlandsurveying.com  
https://evolutionlandsurveying.com

# Level 1A -Building 1

Scale 1 : 200

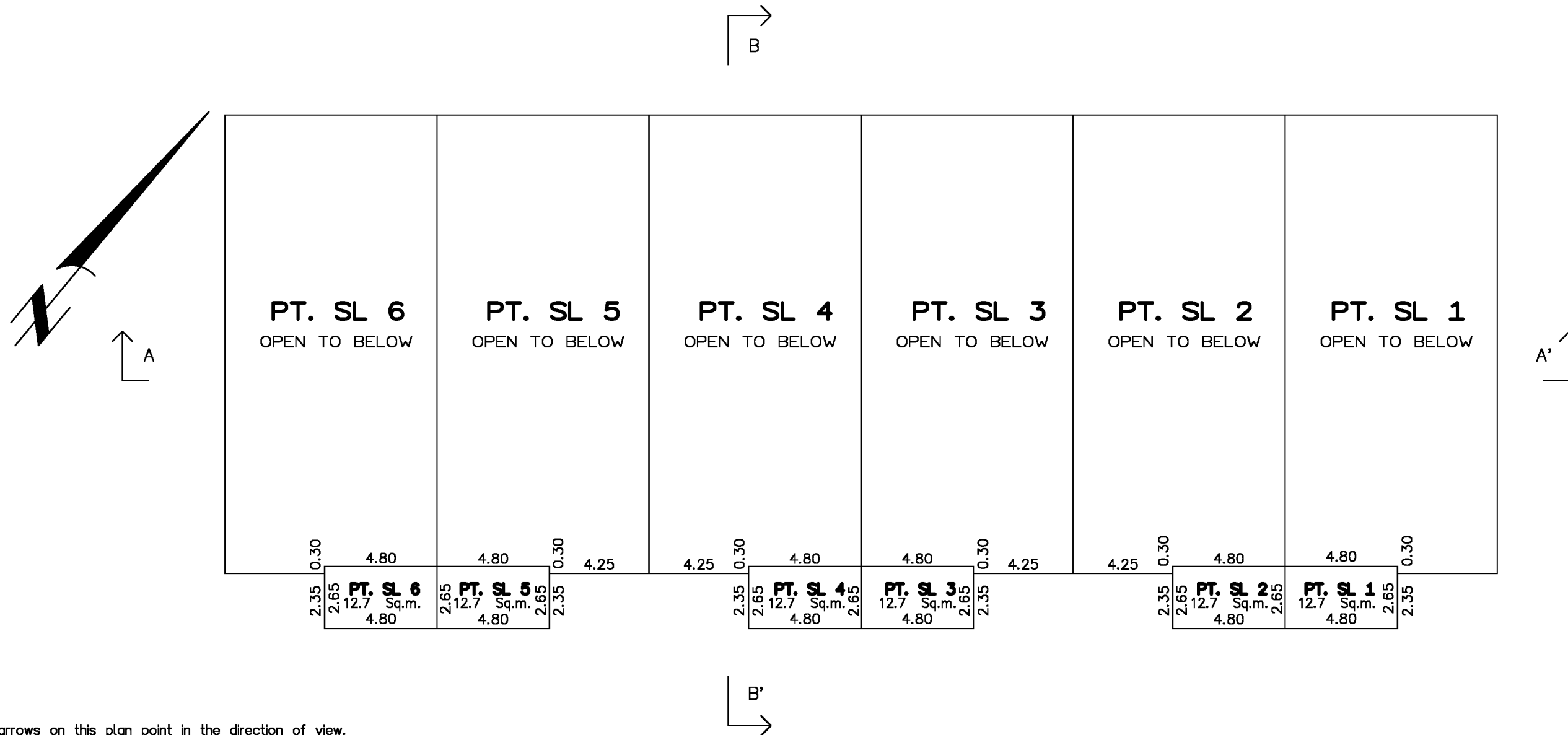


All distances are in meters

The intended plot size of this plan is 432mm in width and 280mm in height (B size) when plotted at a scale of 1:200.

Sheet 7 of 18 Sheets

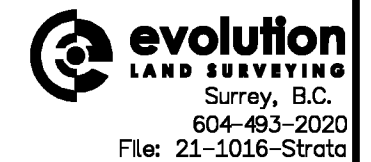
## Strata Plan EPS8304



Section arrows on this plan point in the direction of view.

Strata lot boundary dimensions are shown to outside face of structural portion of exterior walls and the centerline of demising walls between strata lots.

Zheng Tong, B.C.L.S. 1011  
9th day of December, 2025.



info@evolutionlandsurveying.com  
https://evolutionlandsurveying.com

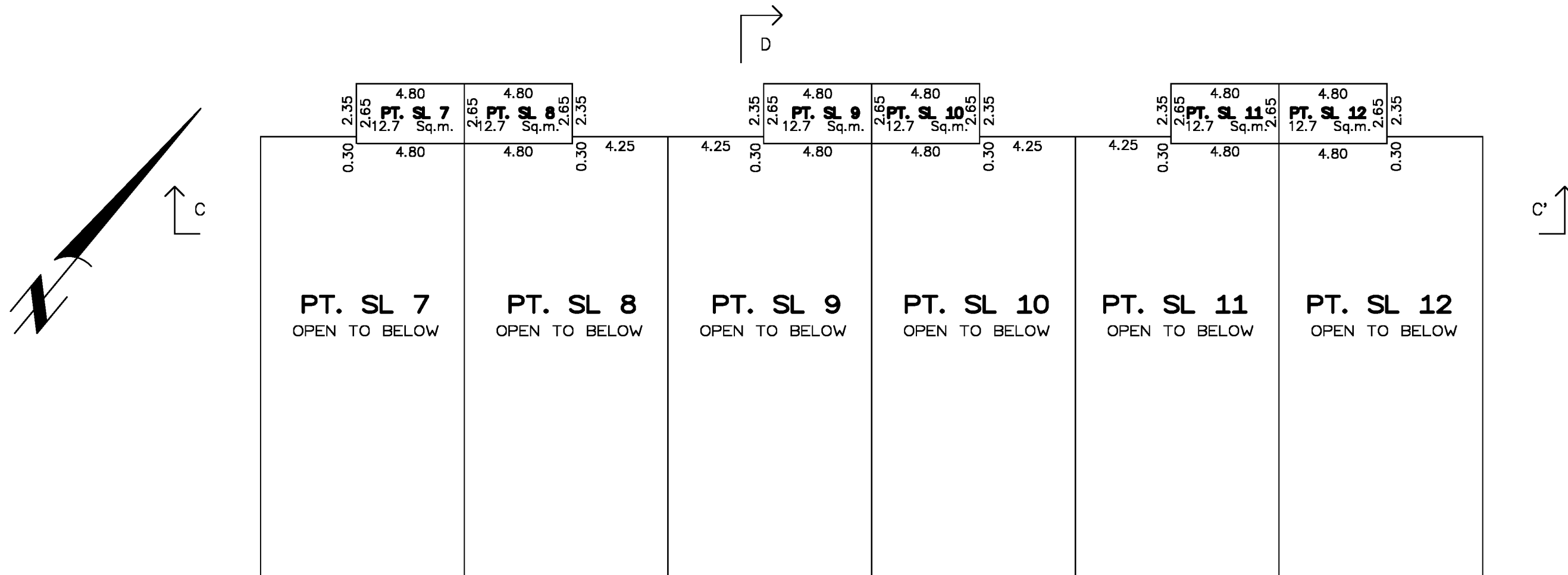
### Level 1A -Building 2

Scale 1 : 200



All distances are in meters

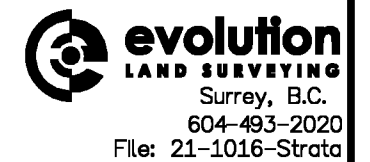
The intended plot size of this plan is 432mm in width and 280mm in height (B size) when plotted at a scale of 1:200.



Section arrows on this plan point in the direction of view.

Strata lot boundary dimensions are shown to outside face of structural portion of exterior walls and the centerline of demising walls between strata lots.

Zheng Tong, B.C.L.S. 1011  
9th day of December, 2025.



info@evolutionlandsurveying.com  
https://evolutionlandsurveying.com

# Level 1A -Building 3

## Scale 1 : 200

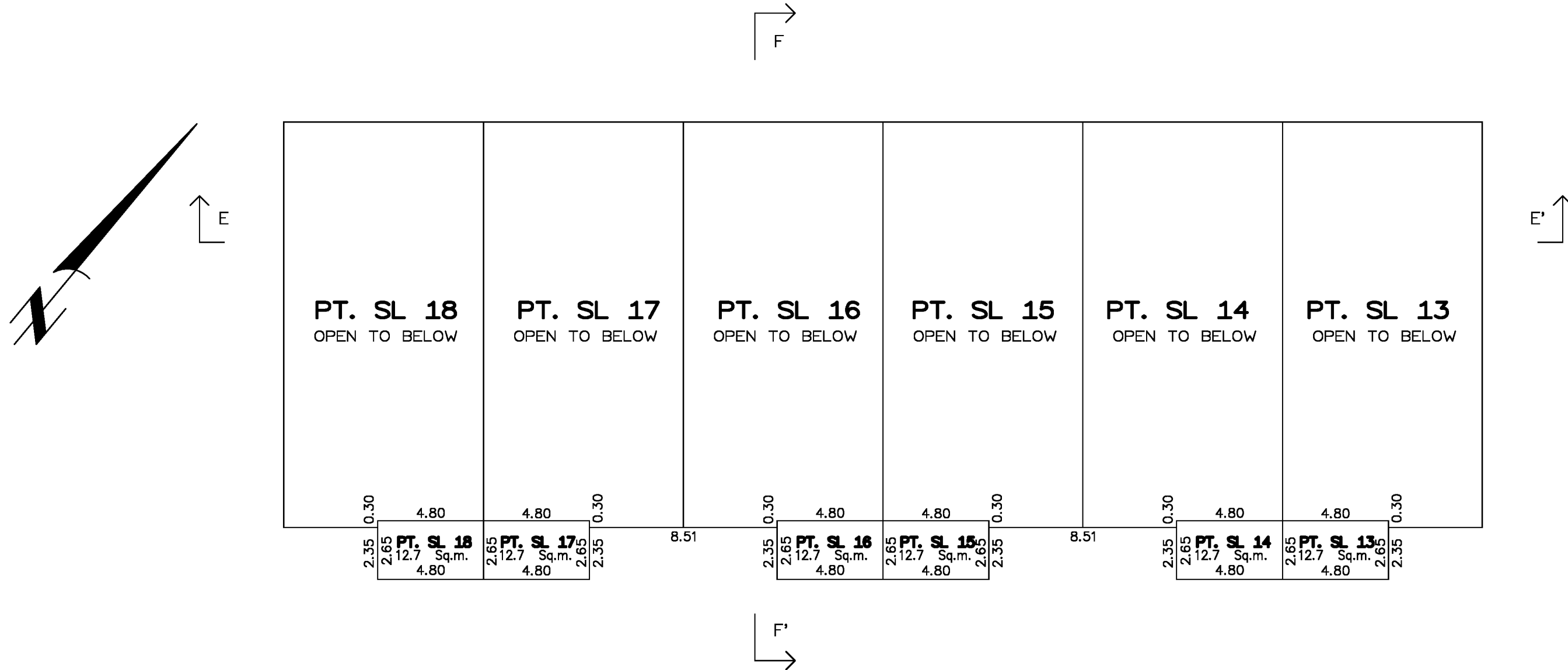


All distances are in meters

The intended plot size of this plan is 432mm in width and 280mm in height (B size) when plotted at a scale of 1:200.

Sheet 9 of 18 Sheets

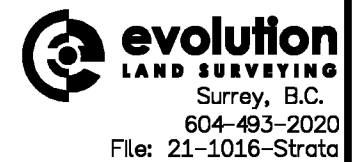
## Strata Plan EPS8304



Section arrows on this plan point in the direction of view.

Strata lot boundary dimensions are shown to outside face of structural portion of exterior walls and the centerline of demising walls between strata lots.

Zheng Tong, B.C.L.S. 1011  
9th day of December, 2025.



info@evolutionlandsurveying.com  
https://evolutionlandsurveying.com

# Level 1A -Building 4

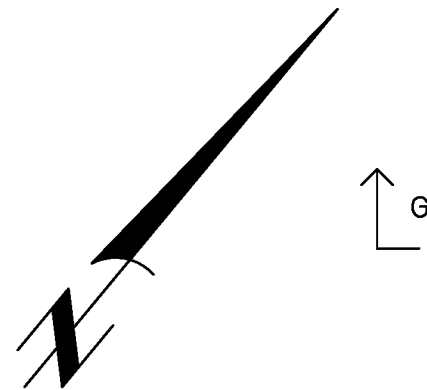
Sheet 10 of 18 Sheets  
**Strata Plan EPS8304**

**Scale 1 : 200**



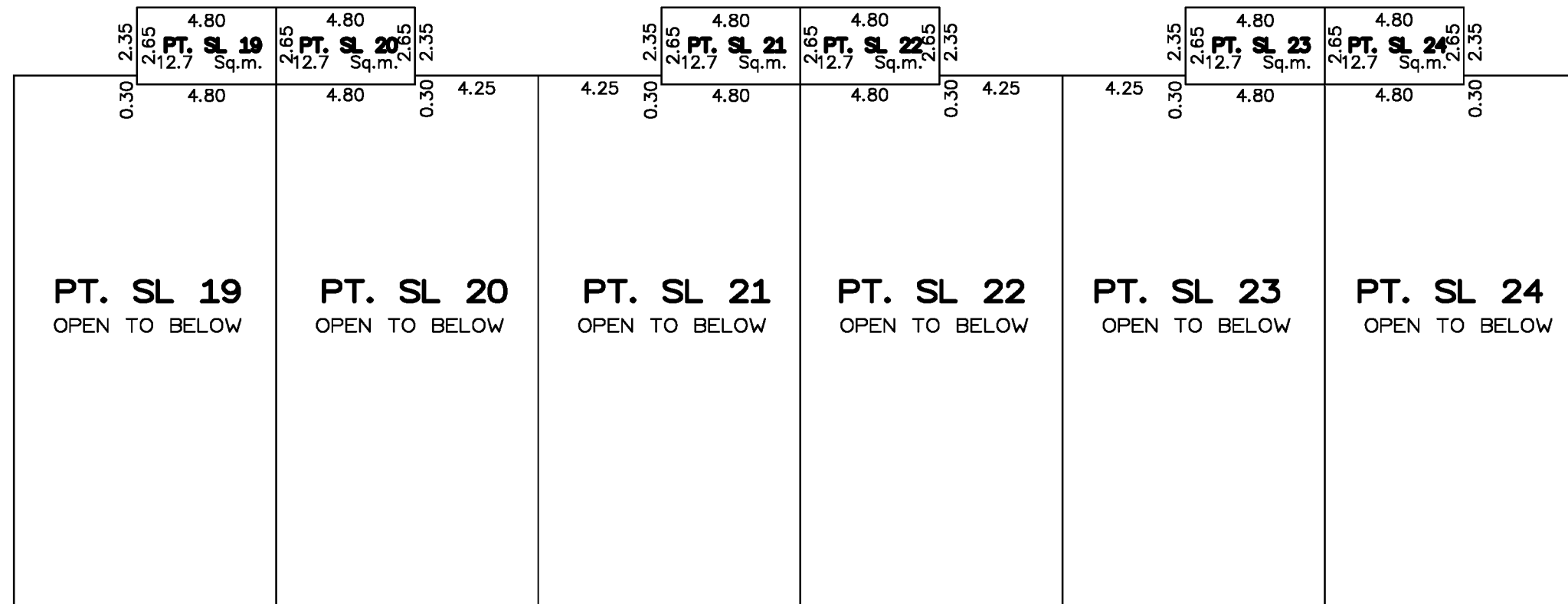
All distances are in meters

The intended plot size of this plan is 432mm in width and 280mm in height (B size) when plotted at a scale of 1:200.



G

H



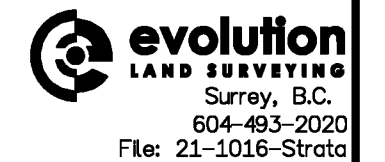
G'

H'

Section arrows on this plan point in the direction of view.

Strata lot boundary dimensions are shown to outside face of structural portion of exterior walls and the centerline of demising walls between strata lots.

Zheng Tong, B.C.L.S. 1011  
9th day of December, 2025.



info@evolutionlandsurveying.com  
https://evolutionlandsurveying.com

### Level 2-Building 1

Sheet 11 of 18 Sheets

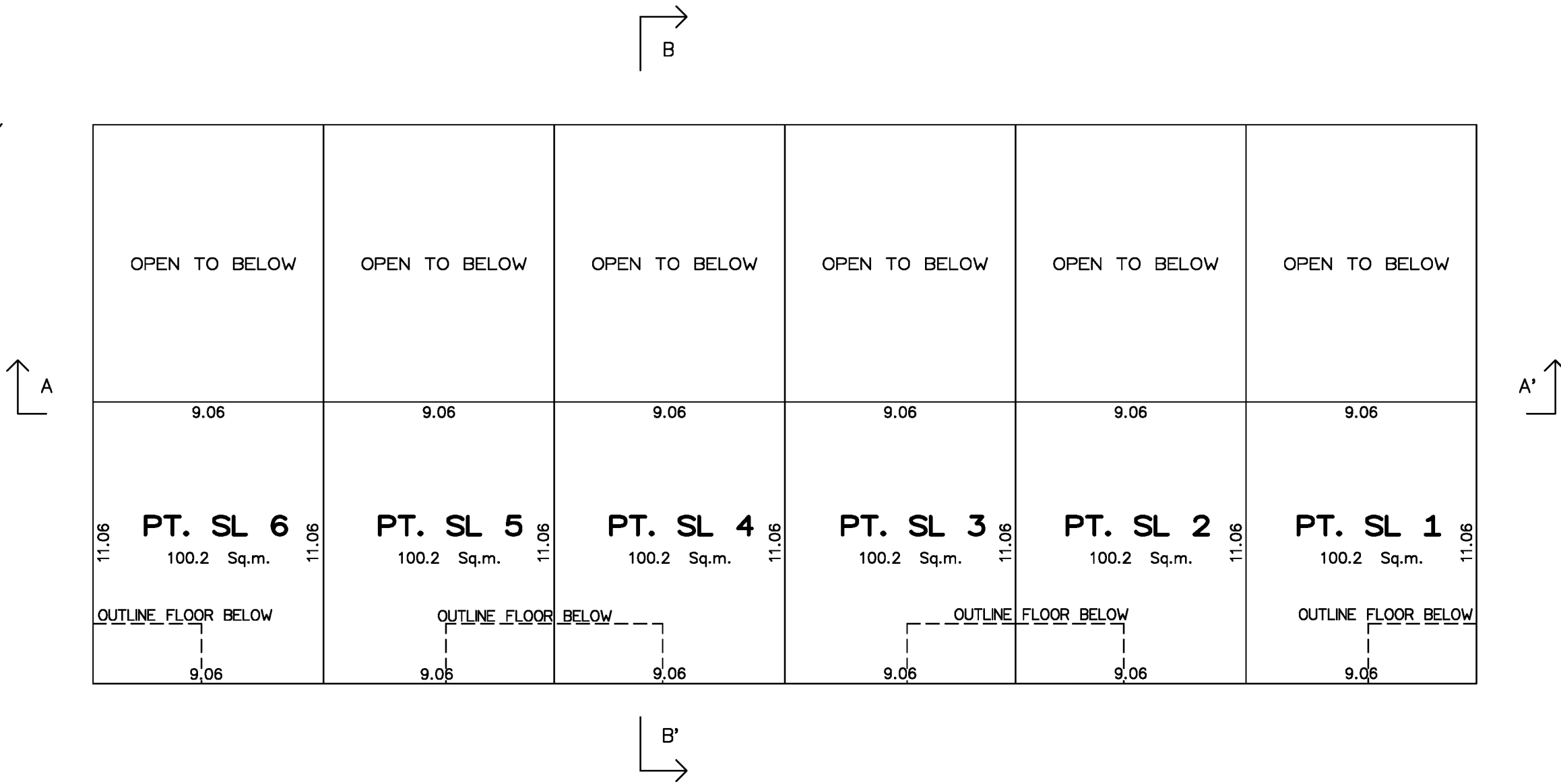
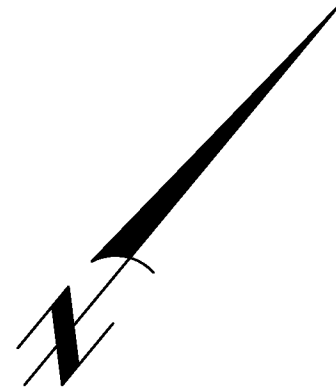
### Strata Plan EPS8304

Scale 1 : 200



All distances are in meters

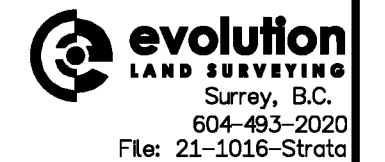
The intended plot size of this plan is 432mm in width and 280mm in height (B size) when plotted at a scale of 1:200.



Section arrows on this plan point in the direction of view.

Strata lot boundary dimensions are shown to outside face of structural portion of exterior walls and the centerline of demising walls between strata lots.

Zheng Tong, B.C.L.S. 1011  
9th day of December, 2025.



info@evolutionlandsurveying.com  
https://evolutionlandsurveying.com

### Level 2-Building 2

Sheet 12 of 18 Sheets

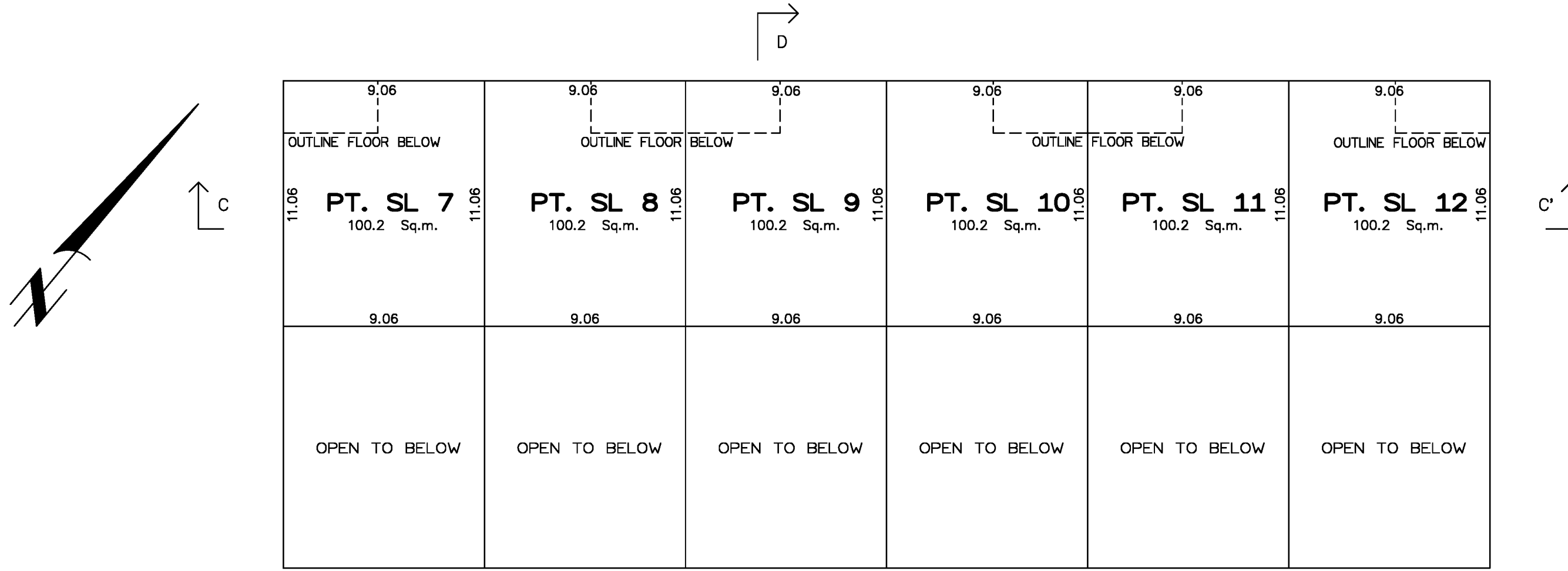
### Strata Plan EPS8304

Scale 1 : 200



All distances are in meters

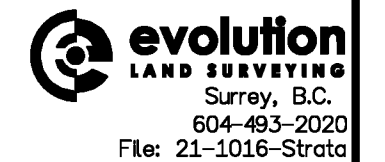
The intended plot size of this plan is 432mm in width and 280mm in height (B size) when plotted at a scale of 1:200.



Section arrows on this plan point in the direction of view.

Strata lot boundary dimensions are shown to outside face of structural portion of exterior walls and the centerline of demising walls between strata lots.

Zheng Tong, B.C.L.S. 1011  
9th day of December, 2025.



info@evolutionlandsurveying.com  
https://evolutionlandsurveying.com

### Level 2-Building 3

Sheet 13 of 18 Sheets

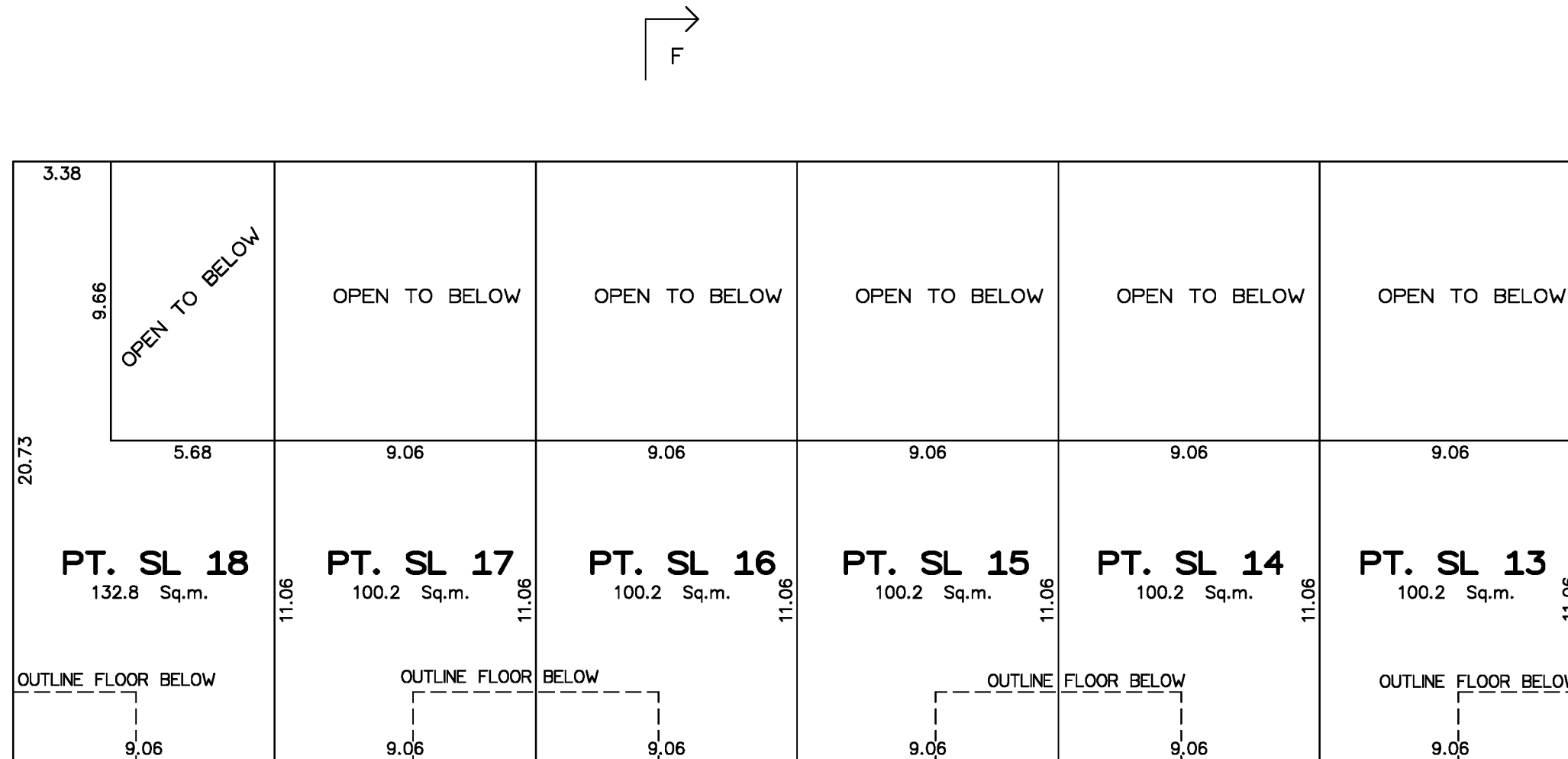
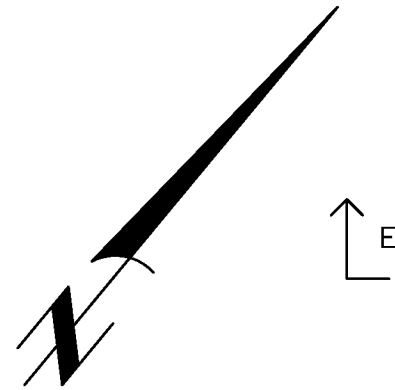
### Strata Plan EPS8304

Scale 1 : 200



All distances are in meters

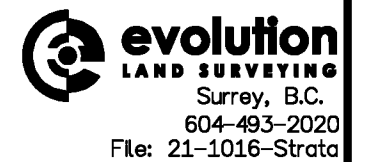
The intended plot size of this plan is 432mm in width and 280mm in height (B size) when plotted at a scale of 1:200.



Section arrows on this plan point in the direction of view.

Strata lot boundary dimensions are shown to outside face of structural portion of exterior walls and the centerline of demising walls between strata lots.

Zheng Tong, B.C.L.S. 1011  
9th day of December, 2025.



info@evolutionlandsurveying.com  
https://evolutionlandsurveying.com

### Level 2-Building 4

Sheet 14 of 18 Sheets

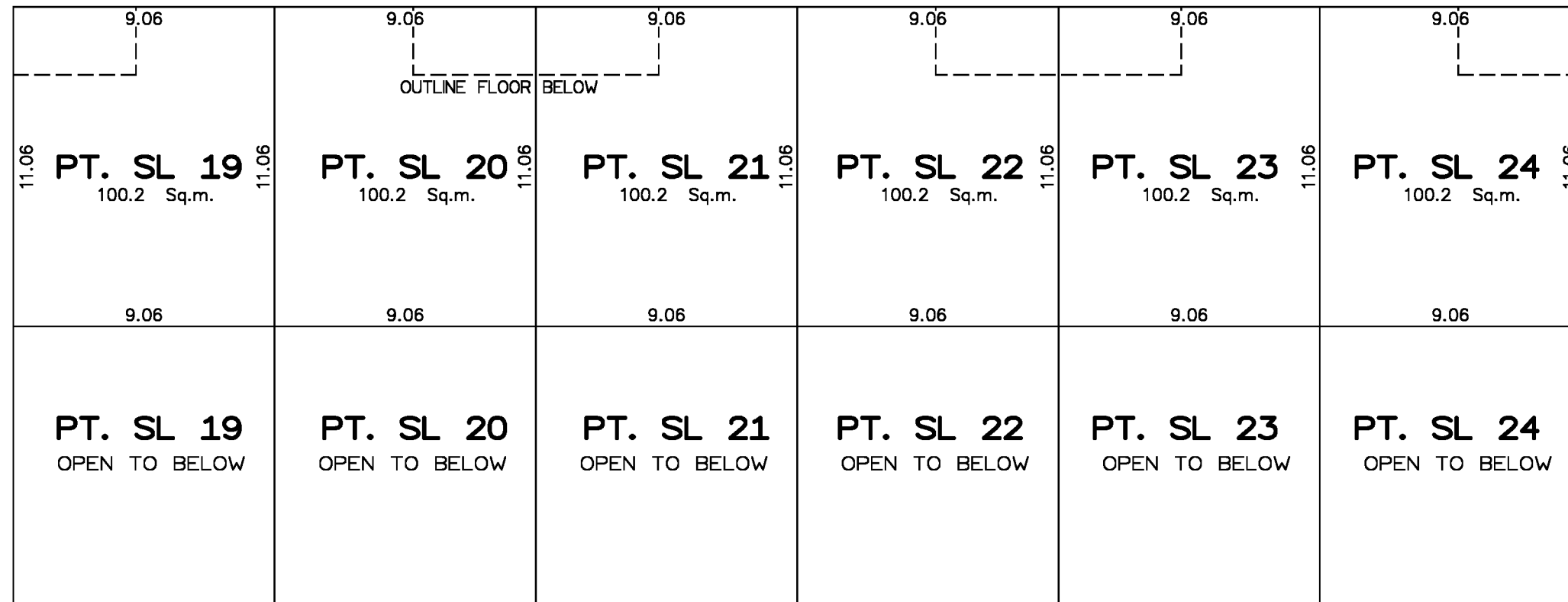
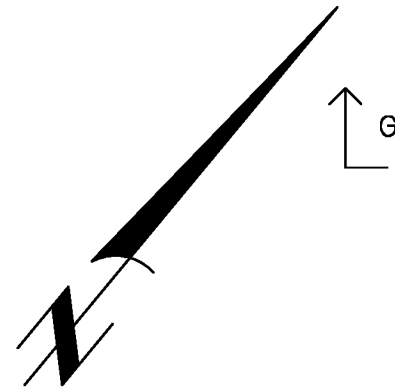
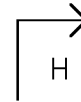
### Strata Plan EPS8304

Scale 1 : 200



All distances are in meters

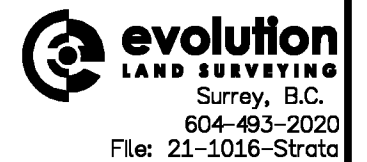
The intended plot size of this plan is 432mm in width and 280mm in height (B size) when plotted at a scale of 1:200.



Section arrows on this plan point in the direction of view.

Strata lot boundary dimensions are shown to outside face of structural portion of exterior walls and the centerline of demising walls between strata lots.

Zheng Tong, B.C.L.S. 1011  
9th day of December, 2025.



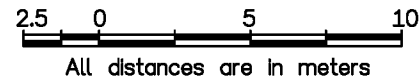
info@evolutionlandsurveying.com  
https://evolutionlandsurveying.com

### Cross Section-Building 1

Sheet 15 of 18 Sheets

### Strata Plan EPS8304

Scale 1 : 250



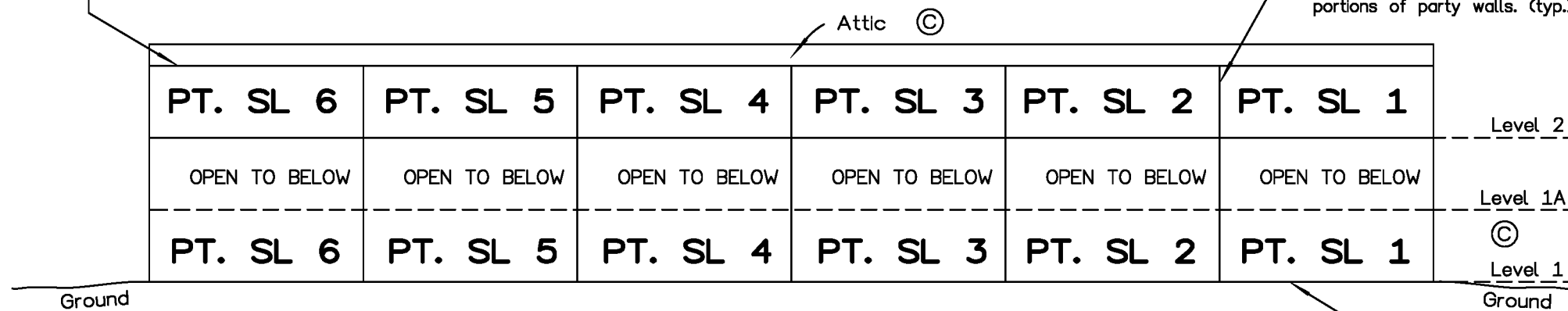
The intended plot size of this plan is 432mm in width and 280mm in height (B size) when plotted at a scale of 1:250.

Strata lot boundary upper vertical extent is to the midpoint of the structural portion of the ceiling. (typ.)

Strata lot boundary is to the midpoint between structural portions of party walls. (typ.)

WESTERLY PROPERTY LINE

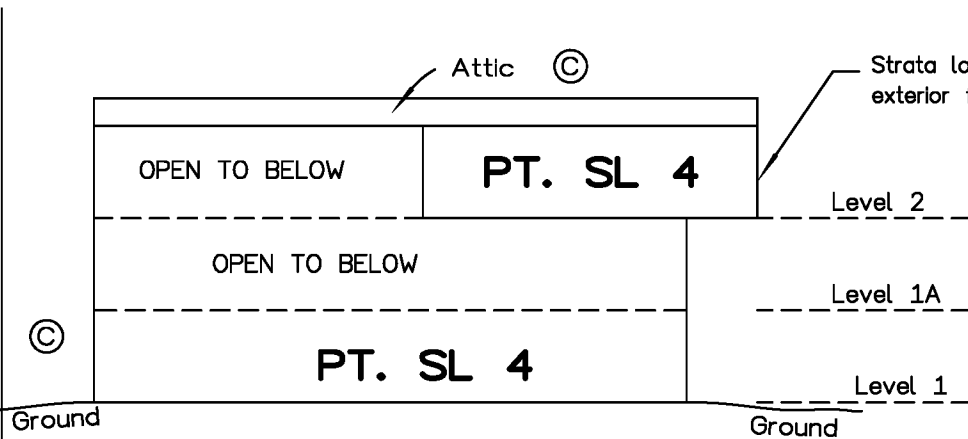
EASTERLY PROPERTY LINE



Cross Section: A-A'

Strata lot boundary lower vertical extent is to the underside of concrete slab. (typ.)

NORTHERLY PROPERTY LINE



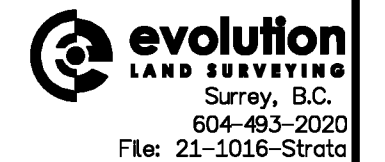
Cross Section: B-B'

Strata lot boundary is to the exterior face of exterior wall. (typ.)

Section arrows on this plan point in the direction of view.

Strata lot boundary dimensions are shown to outside face of structural portion of exterior walls and the centerline of demising walls between strata lots.

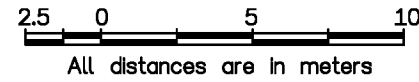
Zheng Tong, B.C.L.S. 1011  
9th day of December, 2025.



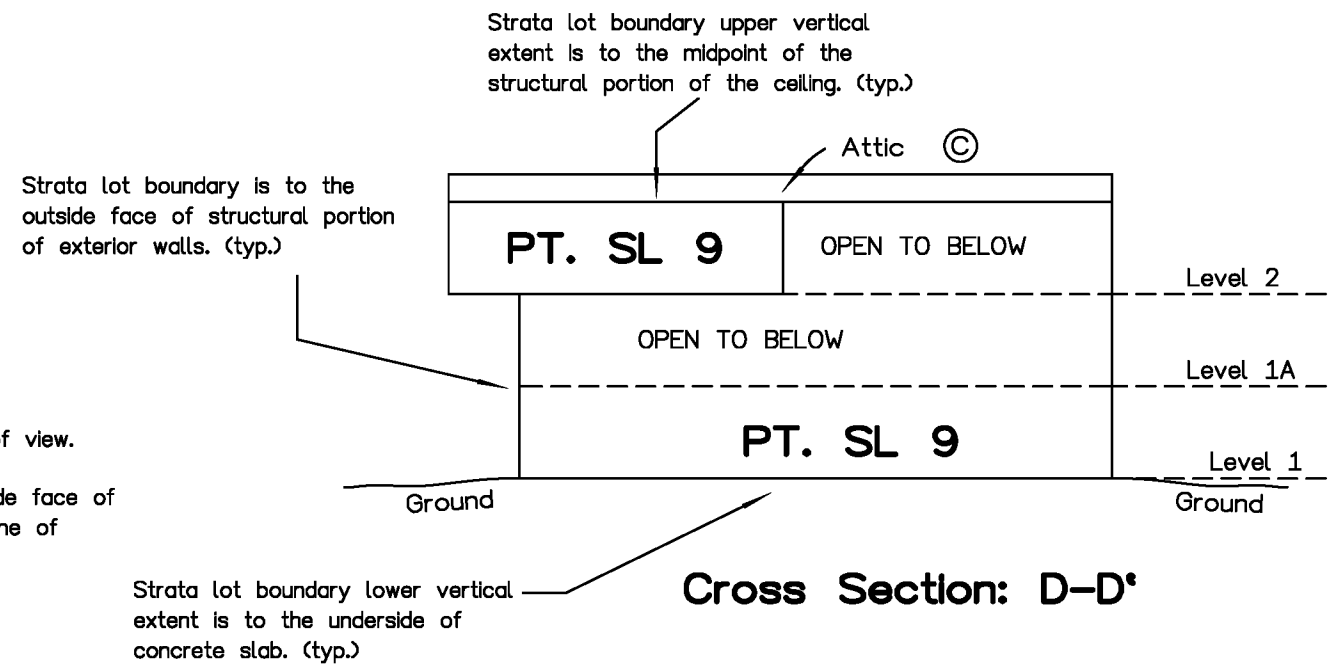
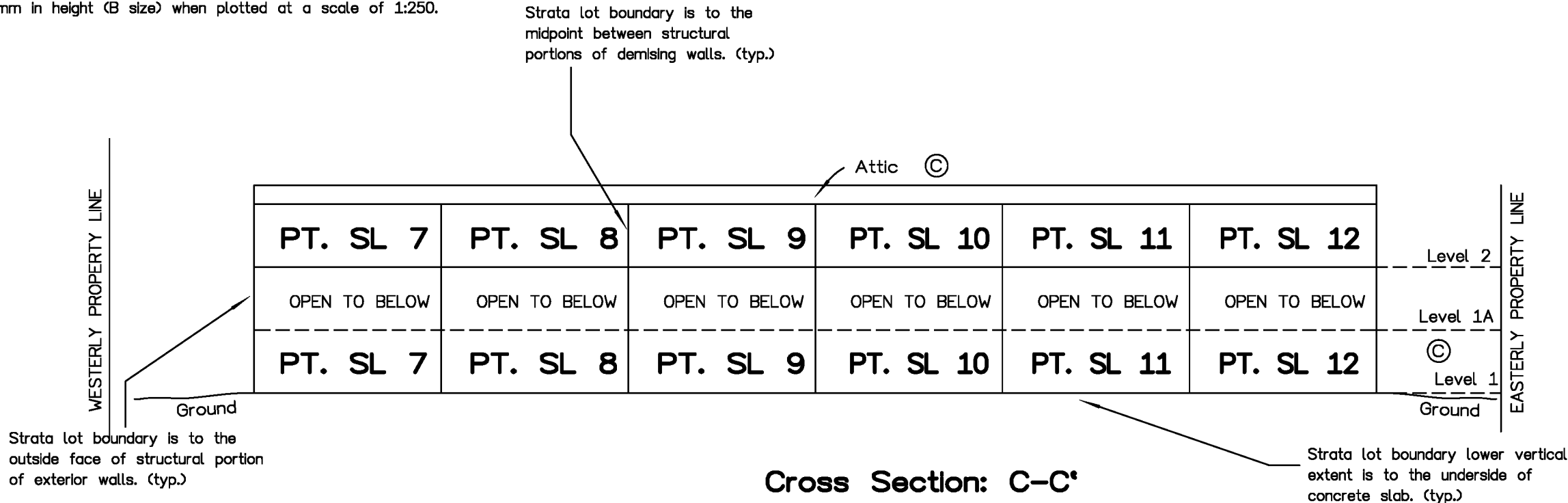
info@evolutionlandsurveying.com  
https://evolutionlandsurveying.com

### Cross Section-Building 2

Scale 1 : 250



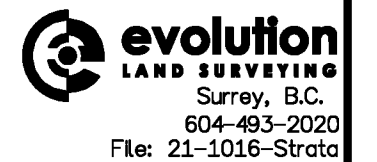
The intended plot size of this plan is 432mm in width and 280mm in height (B size) when plotted at a scale of 1:250.



Section arrows on this plan point in the direction of view.

Strata lot boundary dimensions are shown to outside face of structural portion of exterior walls and the centerline of demising walls between strata lots.

Zheng Tong, B.C.L.S. 1011  
9th day of December, 2025.



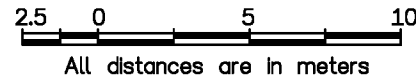
info@evolutionlandsurveying.com  
https://evolutionlandsurveying.com

### Cross Section-Building 3

Sheet 17 of 18 Sheets

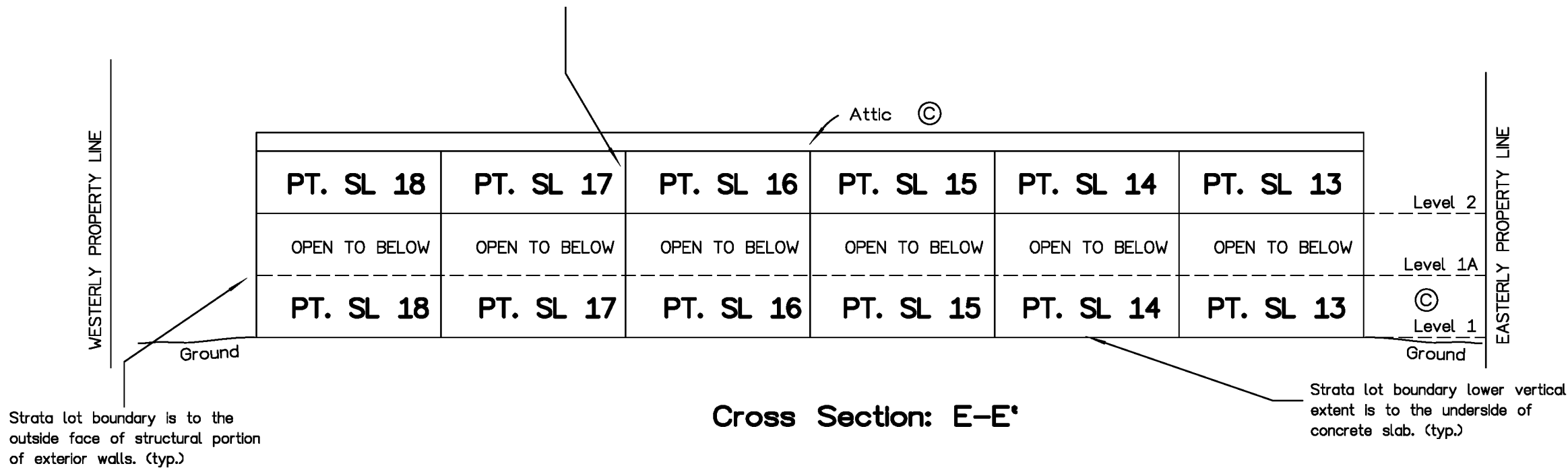
### Strata Plan EPS8304

Scale 1 : 250



The intended plot size of this plan is 432mm in width and 280mm in height (B size) when plotted at a scale of 1:250.

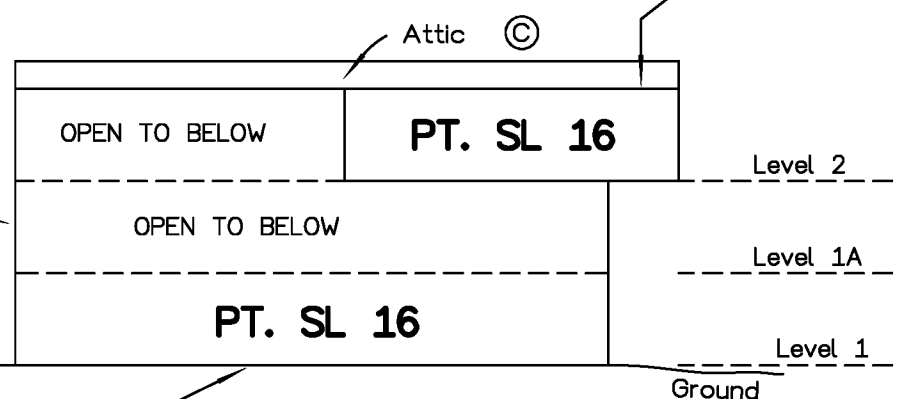
Strata lot boundary is to the midpoint between structural portions of demising walls. (typ.)



Strata lot boundary is to the outside face of structural portion of exterior walls. (typ.)

Strata lot boundary upper vertical extent is to the midpoint of the structural portion of the ceiling. (typ.)

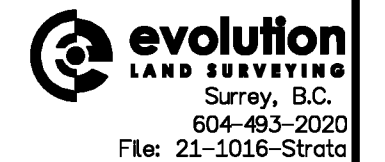
Strata lot boundary lower vertical extent is to the underside of concrete slab. (typ.)



Section arrows on this plan point in the direction of view.

Strata lot boundary dimensions are shown to outside face of structural portion of exterior walls and the centerline of demising walls between strata lots.

Zheng Tong, B.C.L.S. 1011  
9th day of December, 2025.



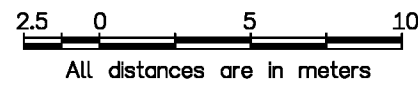
info@evolutionlandsurveying.com  
https://evolutionlandsurveying.com

### Cross Section-Building 4

Sheet 18 of 18 Sheets

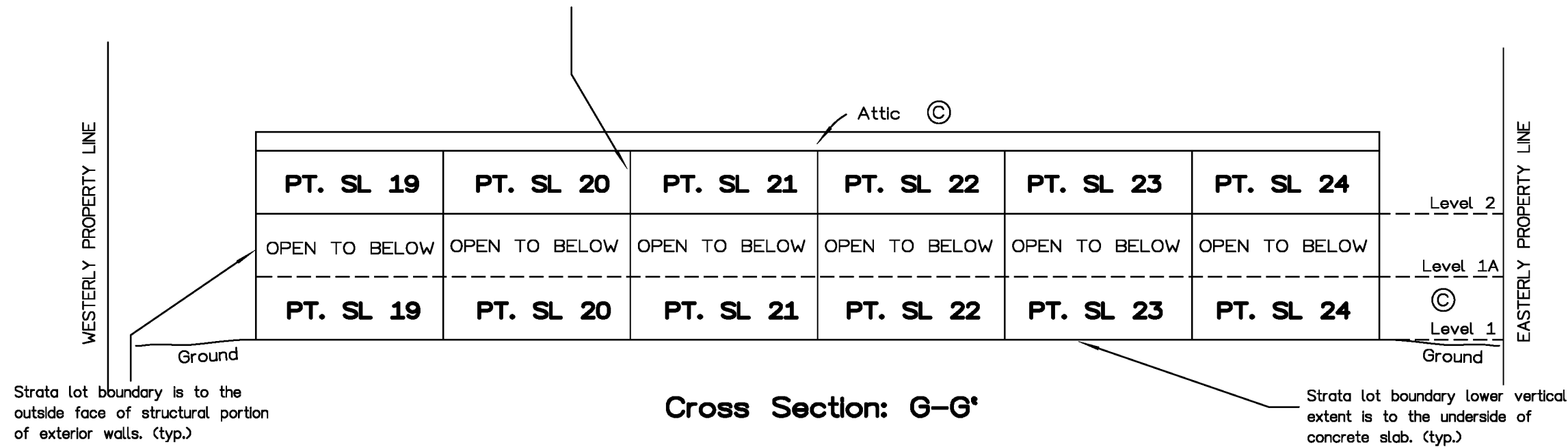
### Strata Plan EPS8304

Scale 1 : 250

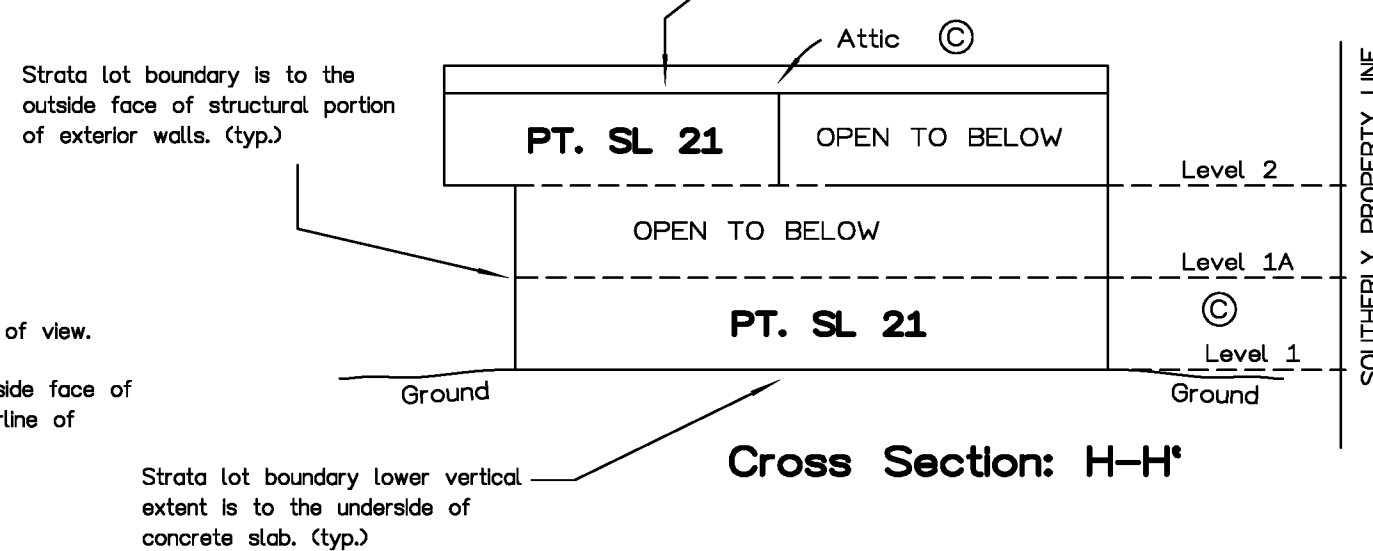


The intended plot size of this plan is 432mm in width and 280mm in height (B size) when plotted at a scale of 1:250.

Strata lot boundary is to the midpoint between structural portions of demising walls. (typ.)



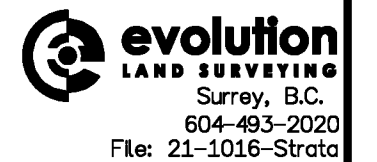
Strata lot boundary upper vertical extent is to the midpoint of the structural portion of the ceiling. (typ.)



Section arrows on this plan point in the direction of view.

Strata lot boundary dimensions are shown to outside face of structural portion of exterior walls and the centerline of demising walls between strata lots.

Zheng Tong, B.C.L.S. 1011  
9th day of December, 2025.



info@evolutionlandsurveying.com  
https://evolutionlandsurveying.com