

# 1305 Airline Rd.

## Suite 1

LARGE RETAIL OR WAREHOUSE SPACE  
AVAILABLE NOW



Cherylyn Boyd

361-585-0300

cherylyn@stonewaterproperties.com

www.stonewaterproperties.com



### The Unit

Prime location just off South Padre Island Dr at Airline Rd., this property offers exceptional visibility and accessibility in Corpus Christi.

The space can be leased in its entirety or demised into smaller units, providing flexibility for a range of users, including large-format retail, indoor recreation, and other commercial uses.

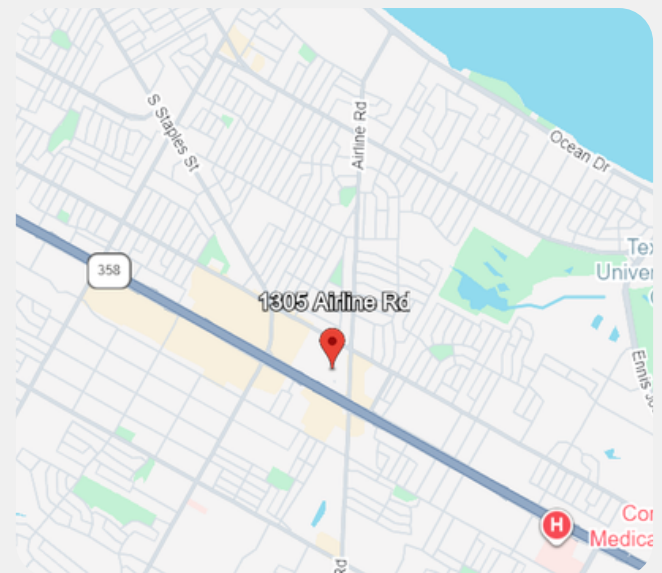
Featuring 18' clear height to deck, two dock-level overhead doors, and approximately 1,157 on-site parking spaces.

**Total Square Footage** 79,020 SF (approx.)

**Base Rent** \$12.00 NNN

**Availability** Immediate

Scan to Learn More

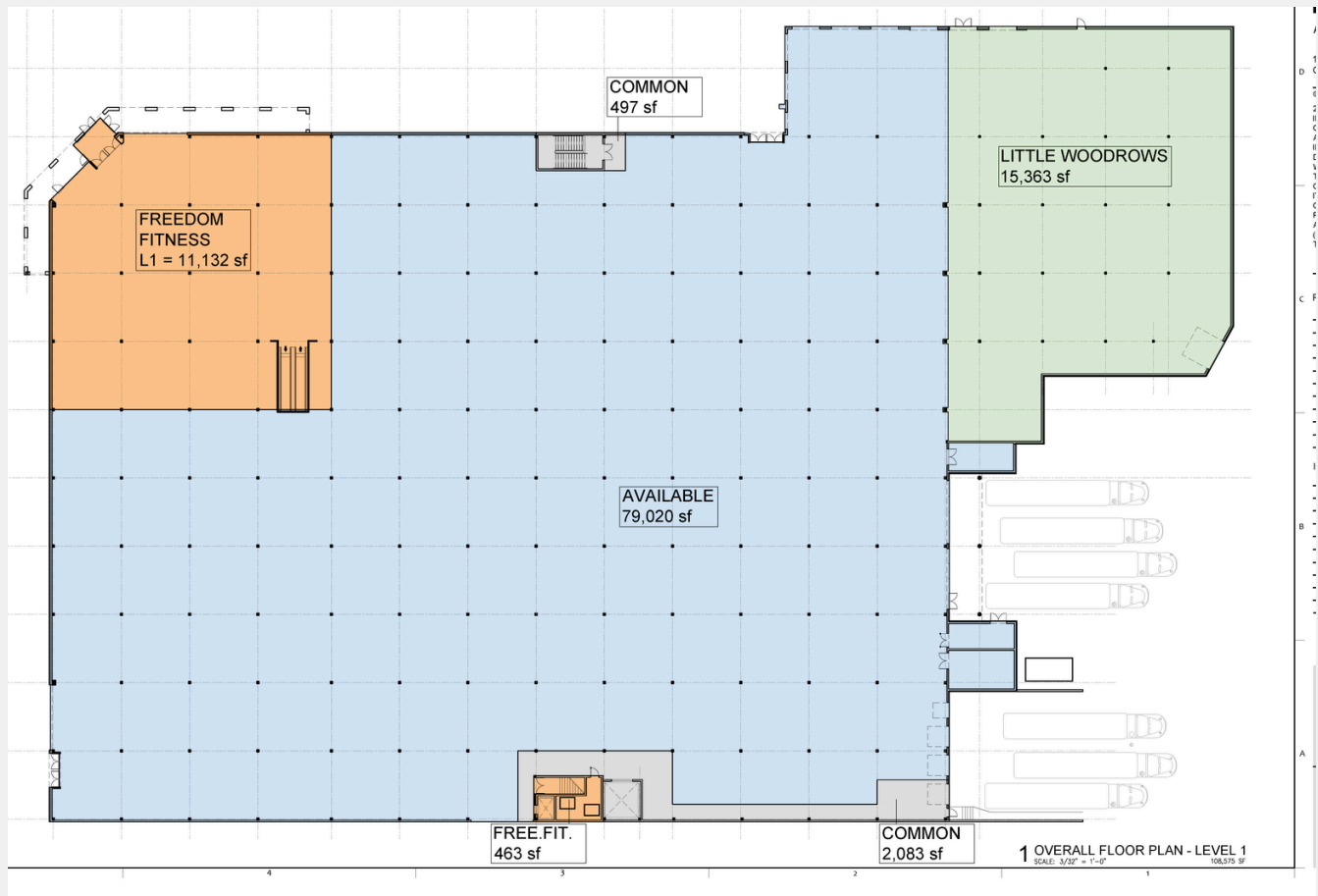


# 1305 Airline Rd.

## Suite 1



## FLOOR PLAN



Scan to Learn More



**Cherylyn Boyd**

361-585-0300  
cherylyn@stonewaterproperties.com

[www.stonewaterproperties.com](http://www.stonewaterproperties.com)