



4,480 - 19,600 SF AVAILABLE | ENDCAP SUITE

3482 OAKCLIFF ROAD

SUITES F - H | DORAVILLE, GA 30340

OWNED BY:

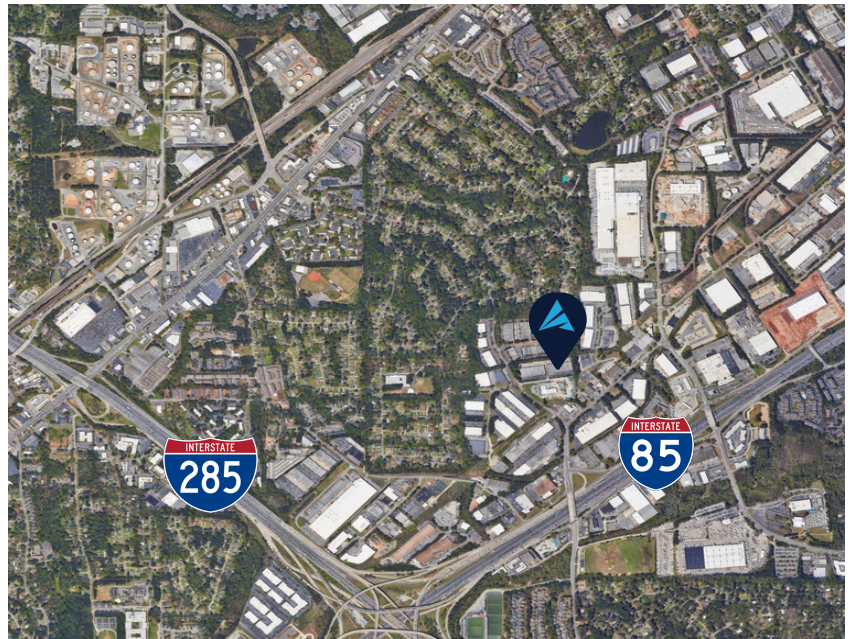


FOR LEASE



## PROPERTY INFORMATION

|               |  |
|---------------|--|
| Total Size:   | 4,480 - 19,600 SF                                  |
| Office:       | 2,940 SF   |
| Warehouse:    | 16,660 SF  |
| Loading:      | Five (5) Dock High Doors<br>One (1) Drive-In Doors |
| Clear Height: | 18'  |
| Features:     | Endcap suite with IOS available                    |
| Available:    | Immediately  |
| Access:       | Easy access to I-85 and I-285                      |



For more information, please contact:

**ANDY HEAD**

Office: (404) 595 - 1466  
Cell: (404) 713 - 4601  
ahead@apexindustrialre.com

**TREY WEGHORST**

Office: (770) 264 - 9420  
Cell: (404) 276 - 9314  
tweghorst@apexindustrialre.com

**MORGAN MCMENAMY**

Office: (404) 806 - 6631  
Cell: (404) 771 - 1199  
mcmcmnamy@apexindustrialre.com



Although the information contained therein was provided from sources believed to be reliable, Apex Industrial makes no representation, expressed or implied, as to its accuracy and said information is subject to errors, omissions or changes.



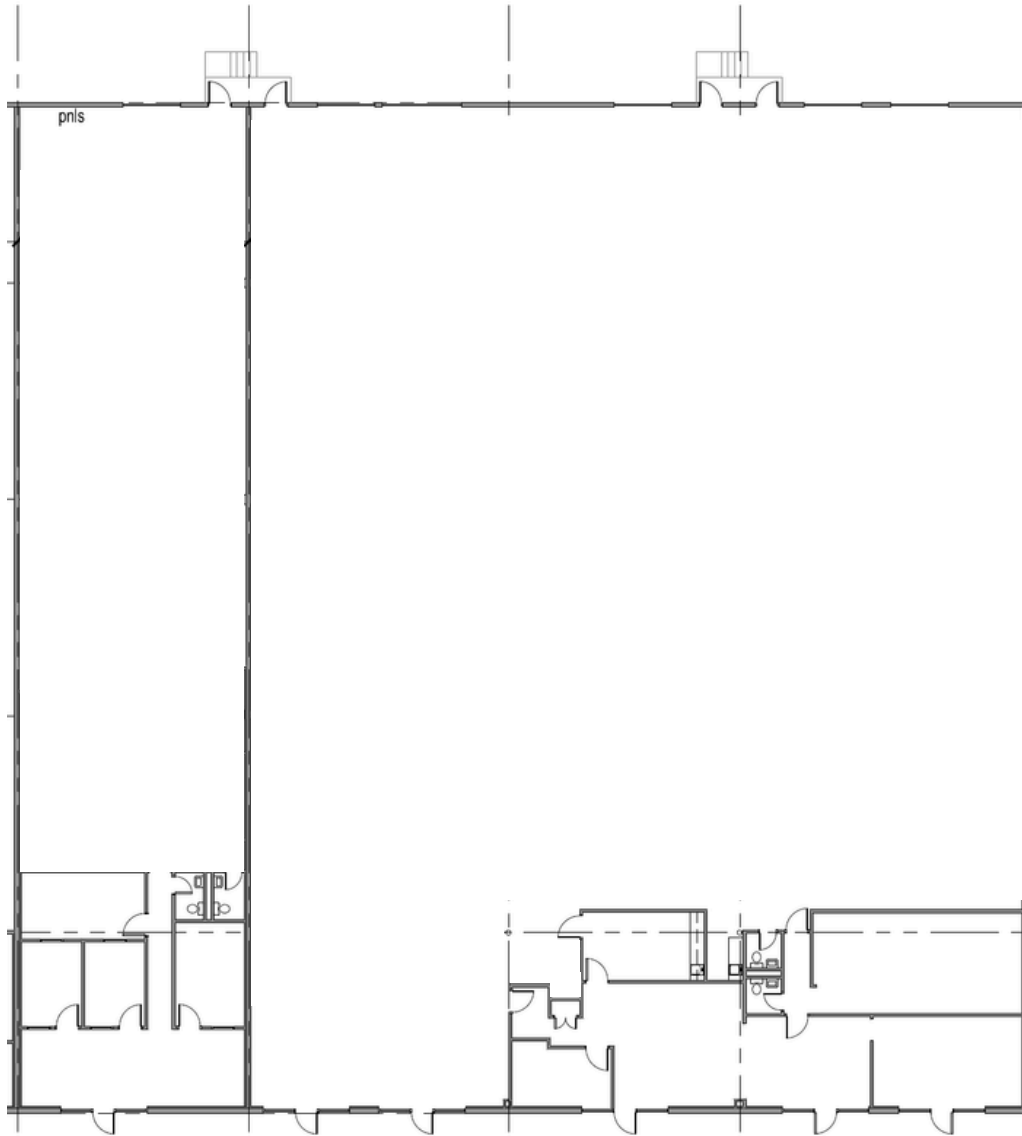
4,480 - 19,600 SF AVAILABLE | ENDCAP SUITE

3482 OAKCLIFF ROAD

SUITES F - H | DORAVILLE, GA 30340

# FLOOR PLAN

OWNED BY:



For more information, please contact:

**ANDY HEAD**

Office: (404) 595 - 1466  
Cell: (404) 713 - 4601  
ahead@apexindustrialre.com

**TREY WEGHORST**

Office: (770) 264 - 9420  
Cell: (404) 276 - 9314  
tweghorst@apexindustrialre.com

**MORGAN MCMENAMY**

Office: (404) 806 - 6631  
Cell: (404) 771 - 1199  
mmcmenamy@apexindustrialre.com



Although the information contained therein was provided from sources believed to be reliable, Apex Industrial makes no representation, expressed or implied, as to its accuracy and said information is subject to errors, omissions or changes.



4,480 - 19,600 SF AVAILABLE | ENDCAP SUITE

3482 OAKCLIFF ROAD

SUITES F - H | DORAVILLE, GA 30340

OWNED BY:



# BUILDING AERIAL

Endcap suite with opportunity for fenced industrial outdoor storage.



For more information, please contact:

**ANDY HEAD**

Office: (404) 595 - 1466  
Cell: (404) 713 - 4601  
ahead@apexindustrialre.com

**TREY WEGHORST**

Office: (770) 264 - 9420  
Cell: (404) 276 - 9314  
tweghorst@apexindustrialre.com

**MORGAN MCMENAMY**

Office: (404) 806 - 6631  
Cell: (404) 771 - 1199  
mmcmenamy@apexindustrialre.com



Although the information contained therein was provided from sources believed to be reliable, Apex Industrial makes no representation, expressed or implied, as to its accuracy and said information is subject to errors, omissions or changes.