

FOR LEASE: 1,451 SF RETAIL SPACE

2123 Augusta Street, Suite C, Greenville, SC 29605



PROPERTY HIGHLIGHTS:

- High-end shopping center in the heart of the Augusta Road retail corridor
- Previously Duck Donuts
- Outdoor Seating
- Convenient to Prisma Health and Downtown
- National co-tenants include CAVA, Starburcks, Chipotle, Marcos Pizza, and Club Pilates
- Ample parking (see site plan)
- High-density, high-income area
- 3-mile radius : 74,331 residents with \$94,000 average income
- Zoned PD – City of Greenville
- \$33.00/SF + \$7.85/SF CAM



LYERLY COMMERCIAL

Ted Lyerly

Broker-In-Charge

864-275-7900

ted@lyerlycommercial.com

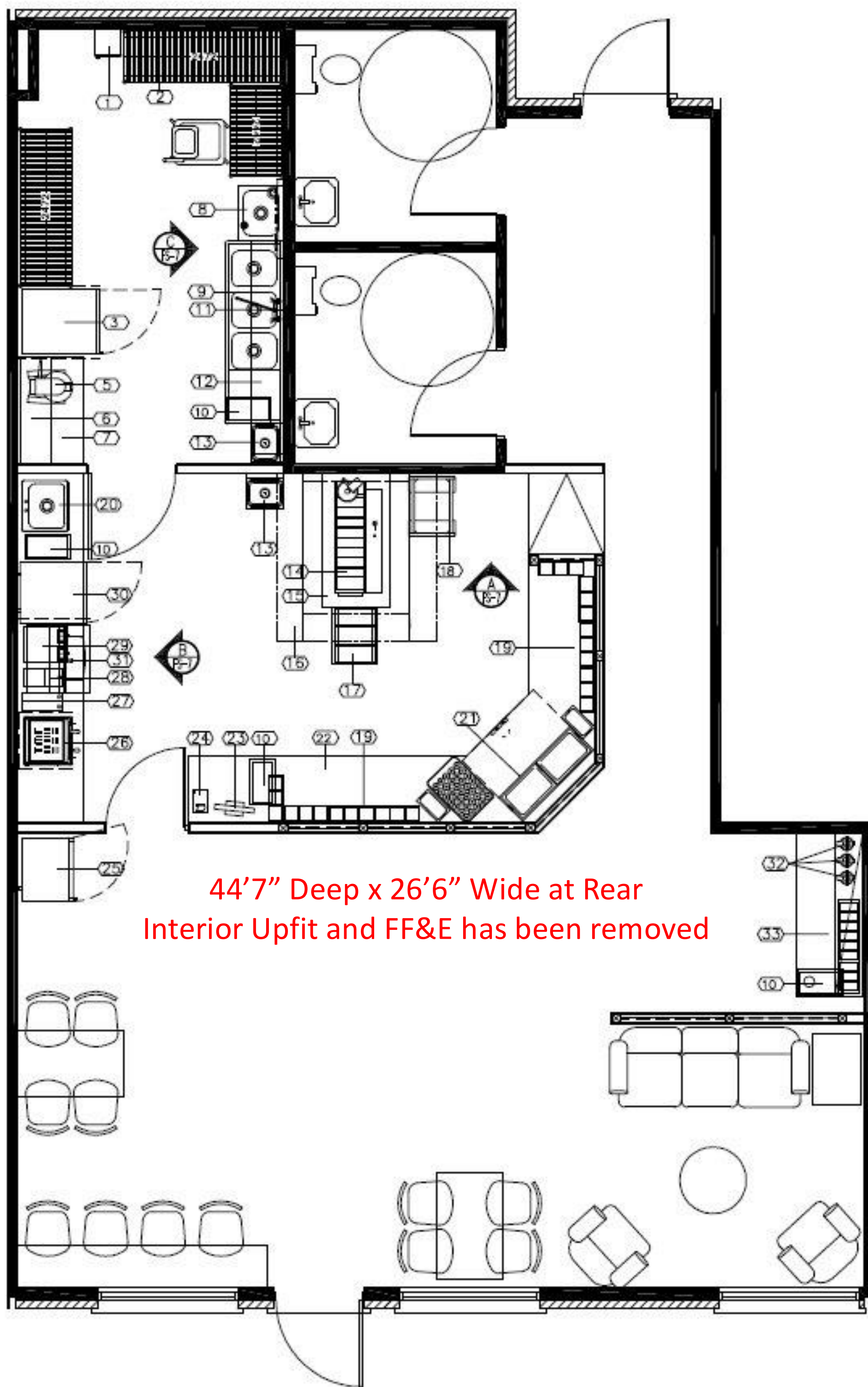
19 Conestee Avenue, #8135

Greenville, SC 29604



FLOOR PLAN

2123 Augusta Street, Suite C



SITE PLAN

149 Parking Spaces Available

