



# FORMER BREWERY FOR LEASE **MADAMORE**



Dean Misleh  
dmisleh@lee-associates.com  
C 513.543.9710

Dan McDonald  
dan.mcdonald@lee-associates.com  
C 513.608.2984

TC Bartoszek  
tc@lee-associates.com  
C 513.535.0563



All information furnished regarding property for sale, rental or financing is from sources deemed reliable, but no warranty or representation is made to the accuracy thereof and same is submitted to errors, omissions, change of price, rental or other conditions prior to sale, lease or financing or withdrawal without notice. No liability of any kind is to be imposed on the broker herein.

# RESTAURANT & BAR SPACE FOR LEASE **MADAMORE**

**AVAILABLE:** 2,543 SF

**PRICING:** \$22.00 PSF + NNN

## **SECOND-GEN RESTAURANT / BAR OPPORTUNITY**

This former brewery space at Madamore offers a rare opportunity to lease a second-generation restaurant and bar within one of Cincinnati's fastest-growing neighborhoods.

Featuring an open floor plan, bar infrastructure, and an outdoor patio, the space is ideally suited for operators seeking a turnkey or lightly repositioned concept.

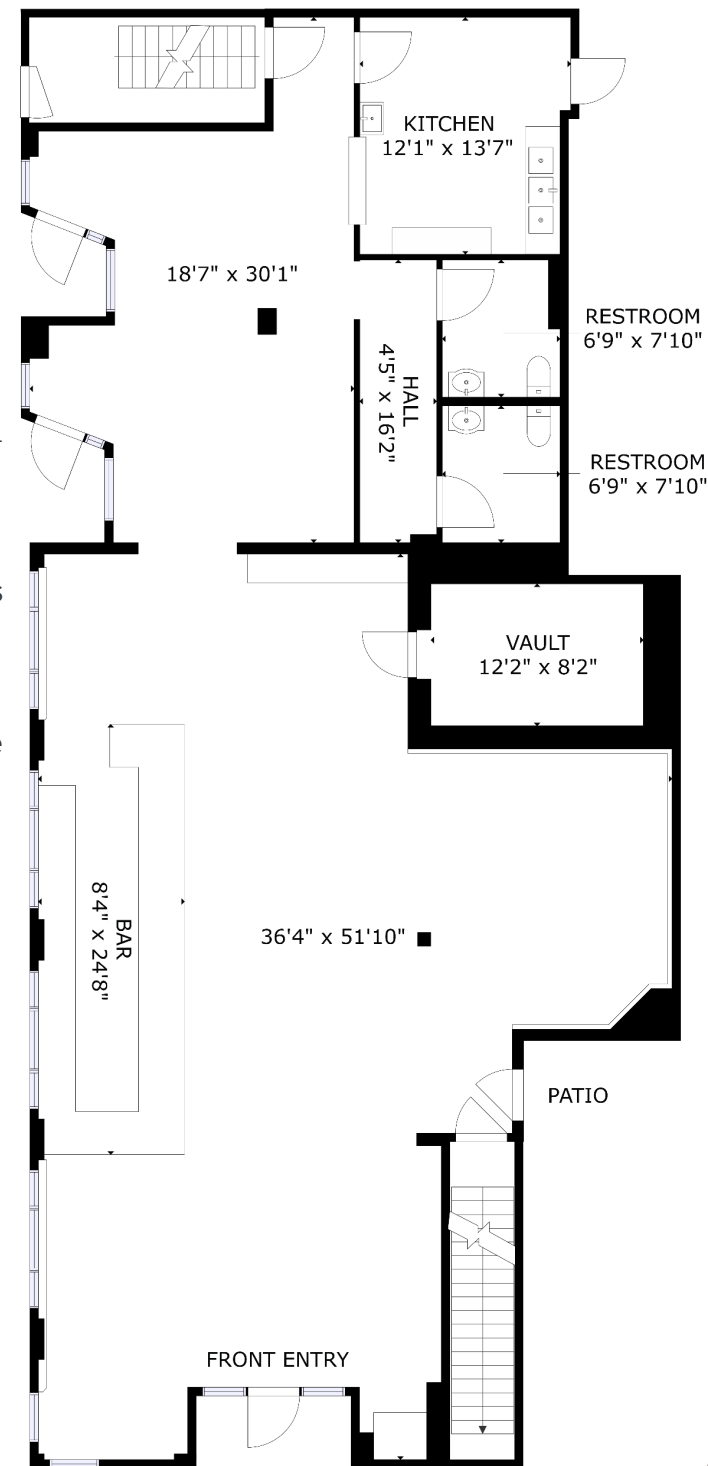
Located within a mixed-use development anchored by 312 luxury apartments, the property benefits from a built-in customer base and strong surrounding demographics.

## **PROPERTY HIGHLIGHTS:**

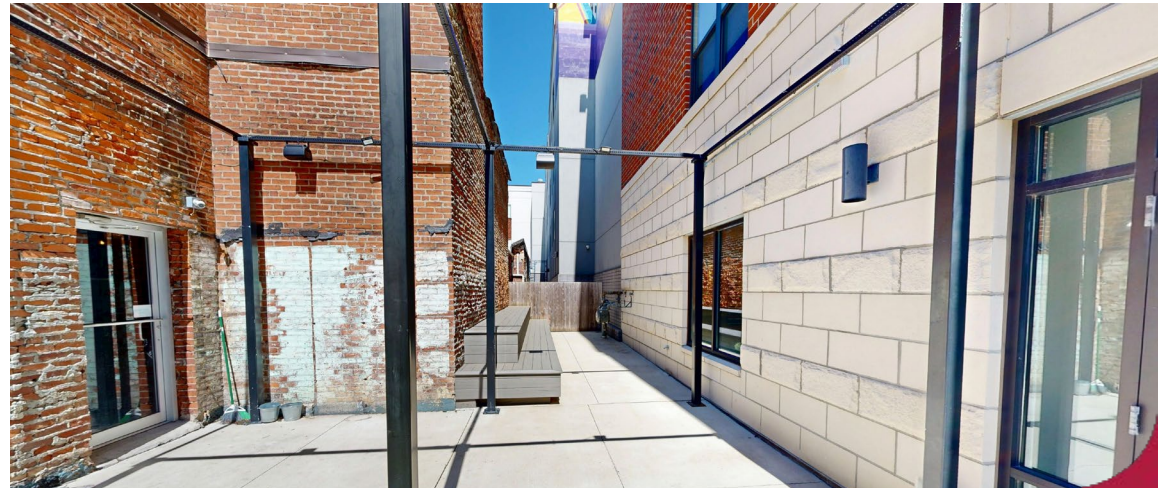
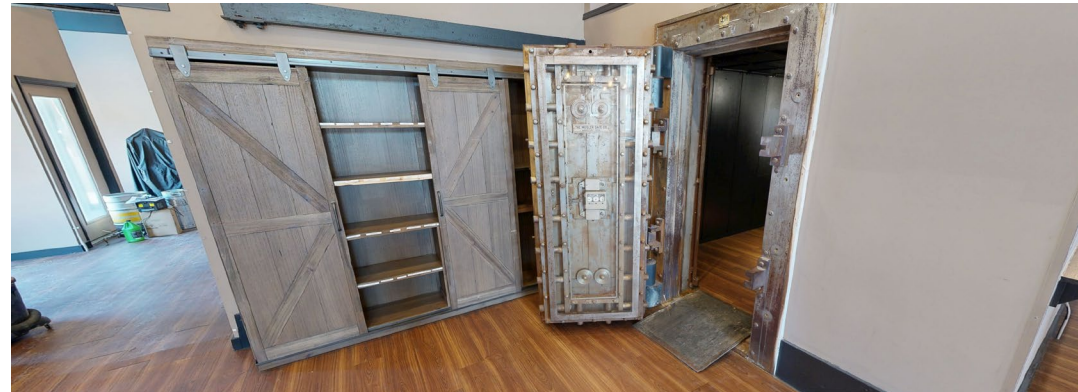
- Some tables, chairs, beer cooler, etc. included
- Existing bar + open layout
- Patio / outdoor seating area
- Unique character finishes (former brewery design)
- Strong visibility at Madison & Whetsel
- Ideal for restaurant, bar, or entertainment concept

## **TRAFFIC COUNTS:**

- Madison Road – 40,075 VPD
- Red Bank Expwy– 30,395 VPD



# FORMER BREWERY **MADAMORE**



# ABUNDANT PARKING



## PARKING

- FREE ON-STREET SPACES
- METERED ON-STREET SPACES
- AMPLE BIKE PARKING
- metro
- Use the transit app

Madamore benefits from a strong mix of on-street, public, and shared parking options within walking distance:

- 1,100+ parking spaces in the immediate area
- 170+ spaces within 2 blocks
- On-street & public parking lots

# STREET RETAIL FOR LEASE **MADAMORE**

## MAJOR EMPLOYERS & TRAFFIC DRIVERS

Madamore is positioned near key employment hubs that support strong daytime traffic and consistent demand.

Nearby Drivers Include: **M E D P A C E**

- Medpace Headquarters
- Cincinnati Children's satellite locations
- Xavier University
- Oakley Business District
- Downtown Cincinnati (15 minutes)



## 12,500+ DAYTIME POPULATION WITHIN 1 MILE

### KEY STATISTICS

3 miles

**3,916**

Total Businesses

**51.7K**

Total Employees

**\$8.26B**

Total Sales

**2.5%**

Unemployment Rate

3 miles

### DAYTIME POPULATION



**79,875**

Total Population



**83,792**

Total Daytime Population

Ratio of daytime to total population:

**1.05**

Values > 1.0 mean that more people come to the area during the day than live there.



**9.4**

Avg Number of Employees



**136**

Total Businesses Per Square Mile