



View Virtual
Walkthrough



View Inside

For Lease

Modified Gross Rent:

\$6,000/mo

Contact:

Michael Gomes (S)

Lic#: RS-82817

808 285 9502

michael.gomes@colliers.com



220 S. King Street, Suite 1800
Honolulu, Hawaii 96813
808 524 2666
colliers.com

Halawa Industrial Plaza

99-1135 Iwaena Street, Unit A18,
Aiea, HI 96701

Property Description:

Rare opportunity to lease a small high cube warehouse with quick access to all major freeways. Unit A18 is comprised of 1,400 square feet of warehouse space and 440 square feet of air conditioned office space. This strategically positioned warehouse will allow your business to expand its reach and efficiently service the entire island, making it an ideal choice for storage, distribution, or service providers.

Features & Benefits:

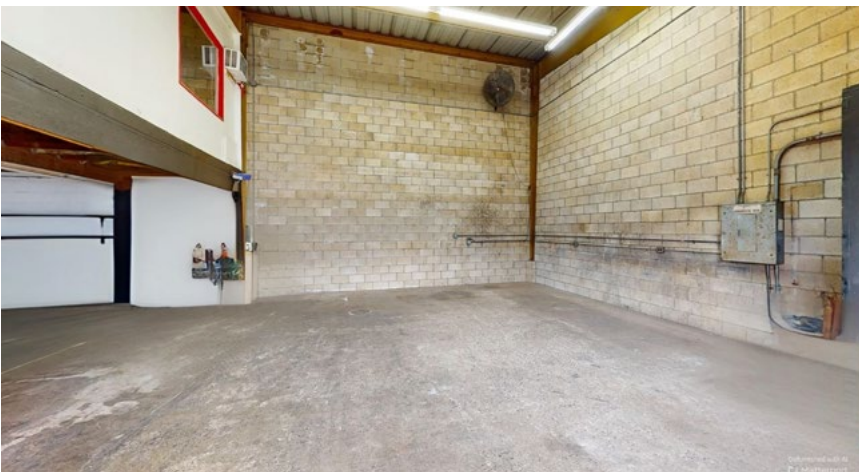
- Centrally located
- Air conditioned office space
- Private restroom
- 3-phase power
- Four reserved parking stalls

This document/email has been prepared by Colliers for advertising and general information only. Colliers makes no guarantees, representations or warranties of any kind, expressed or implied, regarding the information including, but not limited to, warranties of content, accuracy and reliability. Any interested party should undertake their own inquiries as to the accuracy of the information. Colliers excludes unequivocally all inferred or implied terms, conditions and warranties arising out of this document and excludes all liability for loss and damages arising there from. This publication is the copyrighted property of Colliers and /or its licensor(s). © 2025. All rights reserved. This communication is not intended to cause or induce breach of an existing listing agreement.

For Lease

Property Highlights

Area:	Aiea (Halawa Industrial Park)
TMK:	(1) 9-9-73-18-18
Address:	99-1135 Iwaena St, Aiea, HI 96701
Zoning:	I-2
Size Available:	Unit A18 (1,400 SF) with 440 SF air conditioned office space.
Modified Gross Rent:	\$6,000/Month
Term:	3 - 5 years
Date Available:	Now



Michael Gomes (S)

Lic#: RS-82817

808 285 9502

michael.gomes@colliers.com



220 S. King Street, Suite 1800

Honolulu, Hawaii 96813

808 524 2666

colliers.com