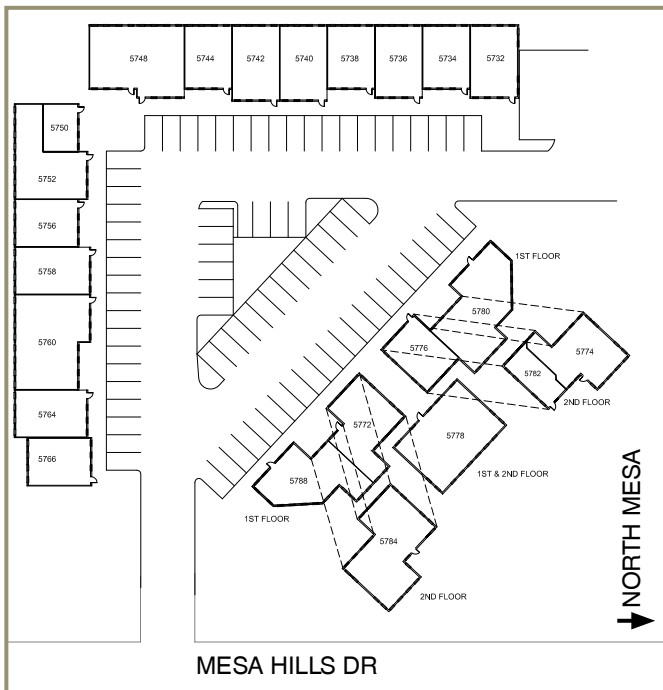




THE SUMMIT

5732-5788 North Mesa, EL PASO-WEST



PROPERTY HIGHLIGHTS

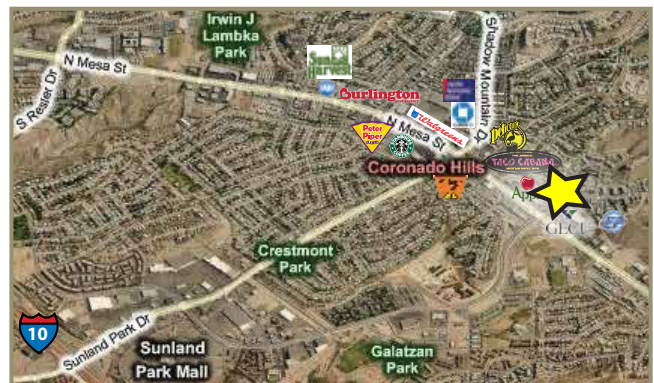
- Located in El Paso's Affluent and Growing West Side
- Outstanding Location at the Intersection of Mesa & Mesa Hills with Close Access to Interstate 10
- Three Mix-Use Buildings that Consist of Approximately 30,000 Rentable SF
- Private Address, Entrances, & Restrooms in Most Offices
- Beautifully Landscaped with Fantastic Mountain Views
- Abundant Apartment Developments Adjacent & in Close Proximity
- Free, Ample Building Adjacent Parking
- Janitorial: General Cleaning & Trash Service Available

TRAFFIC COUNT

44,757 At the Intersection of Mesa Hills per day & North Mesa St.

NEARBY

EP Fitness, Sunland Park Mall, GECU, Interstate 10

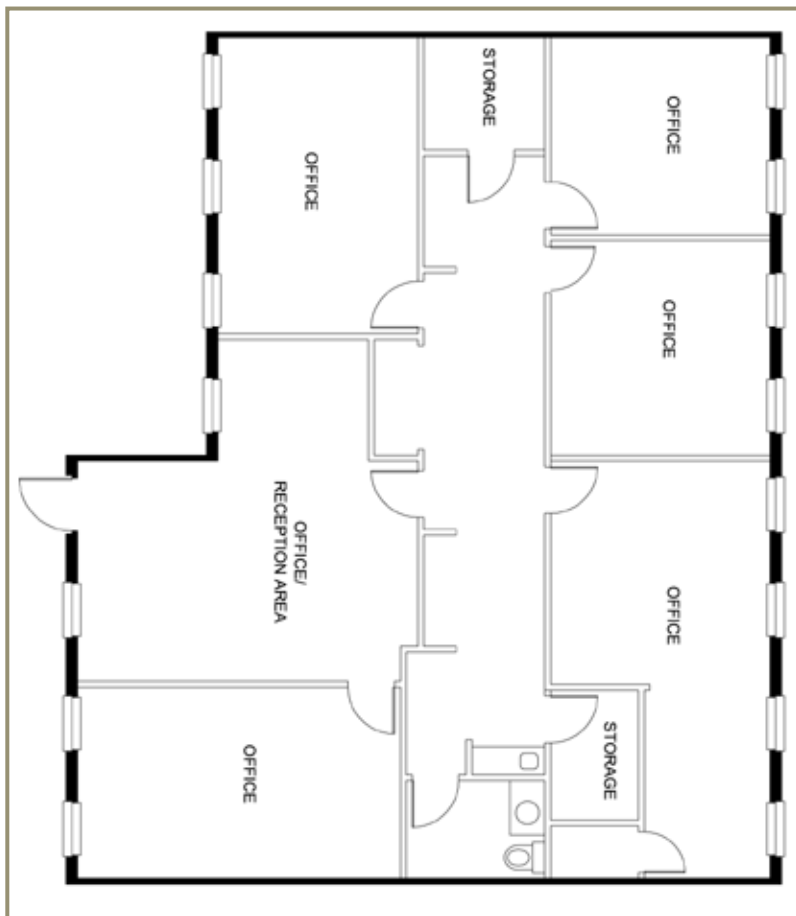




THE SUMMIT

5760 NORTH MESA, EL PASO-WEST

**IMMEDIATELY
AVAILABLE FOR LEASE
APPROX. 1,699 RSF
PROFESSIONAL OFFICE**



CLASS A OFFICE SPACE WITH FANTASTIC VIEWS

- Private Entrance
- Five Large Private Offices, One with Private Storage
- Office Could be Converted to Conference Room
- Private Restroom
- Additional Sink/Work Area
- Large Entry/Reception Area
- Additional File Room & Storage
- Large Windows on Two Sides with Great Views

