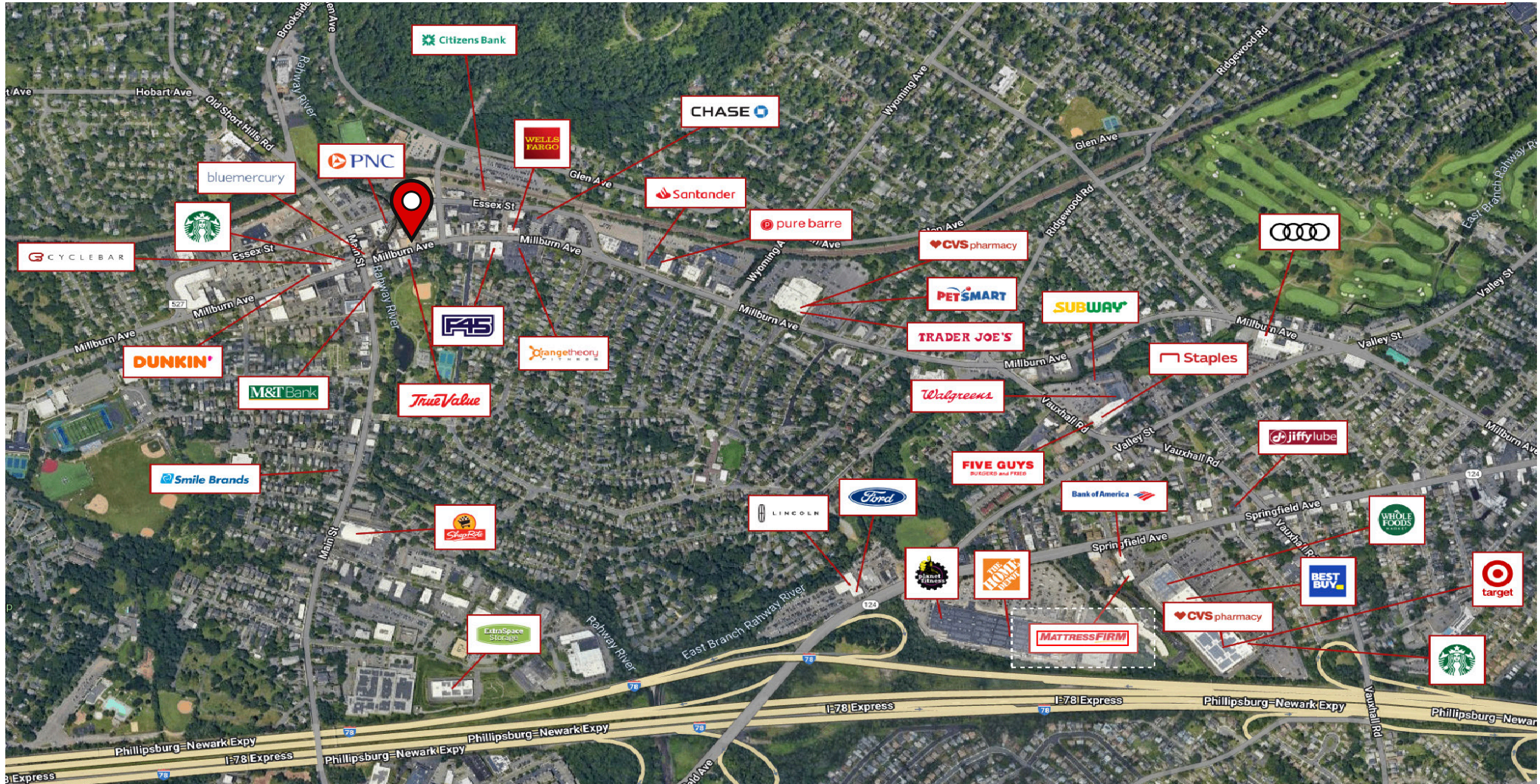


For Lease | 2nd Floor Space - 360 SF

321 Millburn Ave, Millburn, NJ

BRUCE JEFFERY
bmjeffery10@gmail.com
C: 908.625.8300
O: 908.668.9600





DEMOGRAPHICS

	TOTAL POPULATION	AVERAGE HHI	HOUSEHOLDS	TOTAL BUSINESSES	TOTAL EMPLOYEES
1 Mile	14,299	\$298,918	5,170	1,015	8,928
3 Miles	121,145	\$247,661	44,093	7,131	66,071
5 Miles	451,662	\$183,673	162,976	18,437	171,638



For Lease | 2nd Floor Space - 360 SF

321 Millburn Ave, Millburn, NJ

AVAILABLE

360 SF

RENT

\$675/month gross
plus tenant electric

PARKING

Metered & Parking Deck
within 1 block

TRAFFIC

26,969 VPD on Millburn Ave

FRONTAGE

130' on Millburn Ave

GLA

- 8,926 SF 1st Floor
- 5,700 SF 2nd Floor

NOTES

- Landlord Provides AC & Heat to 2nd floor only
- Heavy Foot Traffic
- Walking Distance To Train Station

