



# HOLLADAY OFFICE SUITE FOR LEASE

4527 SOUTH 2300 EAST, HOLLADAY, UT 84117

**RATE REDUCTION!  
TI'S AVAILABLE!**



## PROPERTY INFORMATION

- Suite 104: 1,596 RSF Office Suite
- Unique Two-Story Open-Air Atrium Courtyard with Natural Light and Landscaped Center
- Tenant Improvement Allowance Available
- Ample Parking
- Minutes to Downtown Holladay
- Many Restaurants and Amenities Nearby
- Easy Access to I-215

## DEMOGRAPHICS

	2 Mile	5 Mile	10 Mile
Population	57,305	269,424	799,739
Households	21,883	105,168	286,644
Avg. Household Income	\$115,263	\$97,216	\$90,895

## TRAFFIC COUNTS

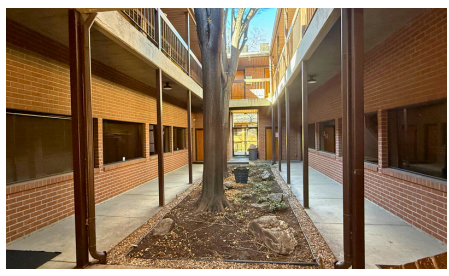
2300 East: 18,214 Annual Average Daily Traffic  
 4500 South: 15,565 Annual Average Daily Traffic

**RATE REDUCED:**  
 FROM ~~\$20.00/SF~~ TO \$18.00/SF FULL SERVICE  
 LESS INTERIOR JANITORIAL

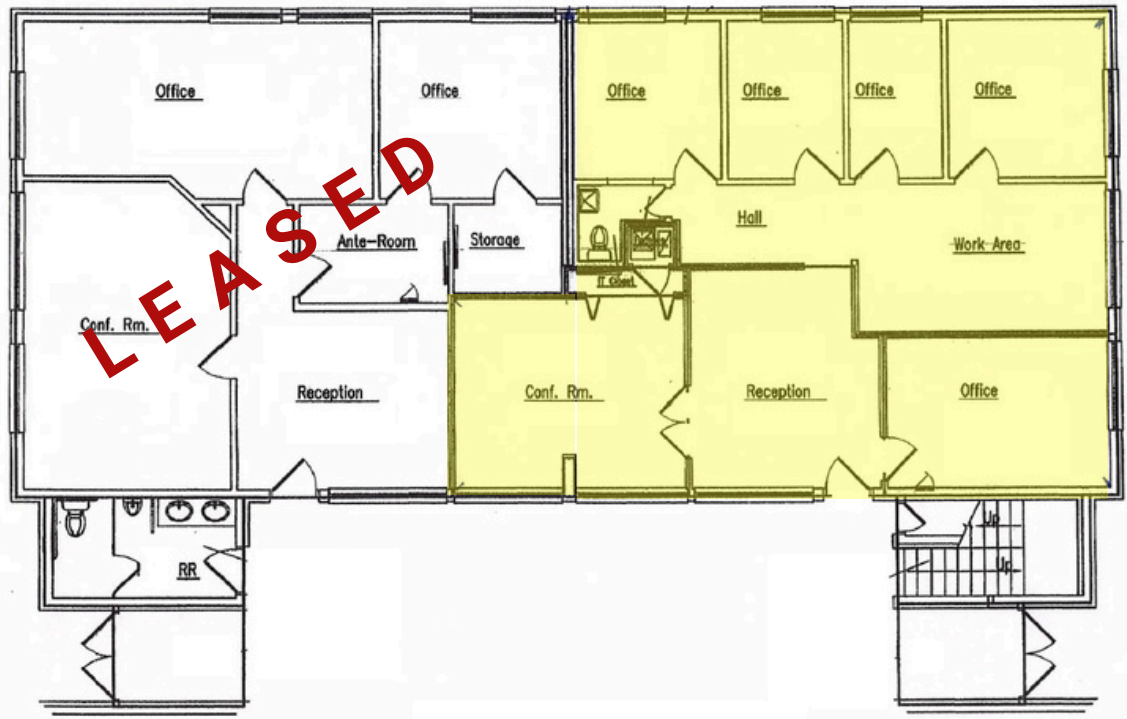


# HOLLADAY OFFICE SUITE FOR LEASE

4527 SOUTH 2300 EAST, HOLLADAY, UT 84117



MAIN LEVEL | Suite 104: 1,596 RSF



This information is given with the understanding that all negotiations and/or real estate activity related to the property described above shall be conducted through this cRc Nationwide office. The above information while not guaranteed, was obtained from sources we believe to be reliable.