



  
STREAM

  
Cousins

  
THE TERRACE

# TERRACE 6

2901 VIA FORTUNA



SUITE	SIZE	AVAILABLE
125	6,709 SF	5/1/27
175	4,456 SF	Now
550	9,360 SF	Now

# THE TERRACE

*visit [terraceatx.com](http://terraceatx.com)*

The Terrace is truly in a class by itself. The 109-acre master planned office development in SW Austin sits in a prime location with dreamy views of Downtown and the Texas Hill Country. The campus is surrounded by some of Austin's premier neighborhoods and best restaurants. Its central location allows easy access to Downtown via Mopac and Loop 360. The Terrace features an onsite café and a premium fitness center with lockers and showers. If tenants want to take advantage of the outdoors, the campus has direct access to the Barton Creek greenbelt, hiking trails and a trailside gym, as well as a relaxing rooftop patio with one-of-a-kind views of the Austin skyline.

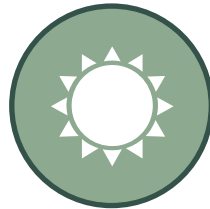
 **WATCH THE VIDEO**



109-ACRE MASTER PLANNED  
DEVELOPMENT



CLOSE PROXIMIITY TO  
SHOPS, SERVICES,  
BOUTIQUES AND  
GROCERY OPTIONS



ACCESS TO OUTDOOR  
HIKING TRAILS



ADJACENT TO BARTON  
CREEK GREENBELT AND  
LIMITLESS, LUSH VIEWS



PROPERTY MANAGEMENT  
AND ENGINEERS ON-SITE



PREMIUM FITNESS CENTER  
WITH LOCKERS AND  
SHOWERS



THISTLE CAFE ONSITE



5 MINUTES TO DOWNTOWN  
& EASY ACCESS TO  
MOPAC EXPY



# THISTLE CAFE

NESTLED ON THE BANKS OF BARTON CREEK WITH ACCESS TO OVER 1.5 MILES OF TRAILS ONSITE

On-site eatery serving a variety of fresh and delicious fare for breakfast and lunch. Grab a breakfast taco and pull up a seat in the café, take your salad out to the terrace overlooking downtown, or order a sandwich online and pick it up for a quick bite at your desk or on the trails.



## LOCAL EATS

- Tacodeli
- Salt Traders Coastal Cooking
- The Cheesecake Factory
- California Pizza Kitchen
- Nordstrom Bistro
- Modern Market
- CAVA
- Summer Moon Coffee
- Brugger's Bagels
- Chipotle
- Trader Joe's
- Chinatown
- Panera Bread
- Starbucks
- Sway
- Thundercloud Subs





## Elevated Fitness

Occupiers of The Terrace will enjoy access to all new amenities, including a newly built onsite fitness studio and a fully renovated café and lounge. The gym features modern exercise equipment and luxurious spa-like locker rooms, while the café and lounge area offers multiple dining options with scenic views.







# Refuel with a View

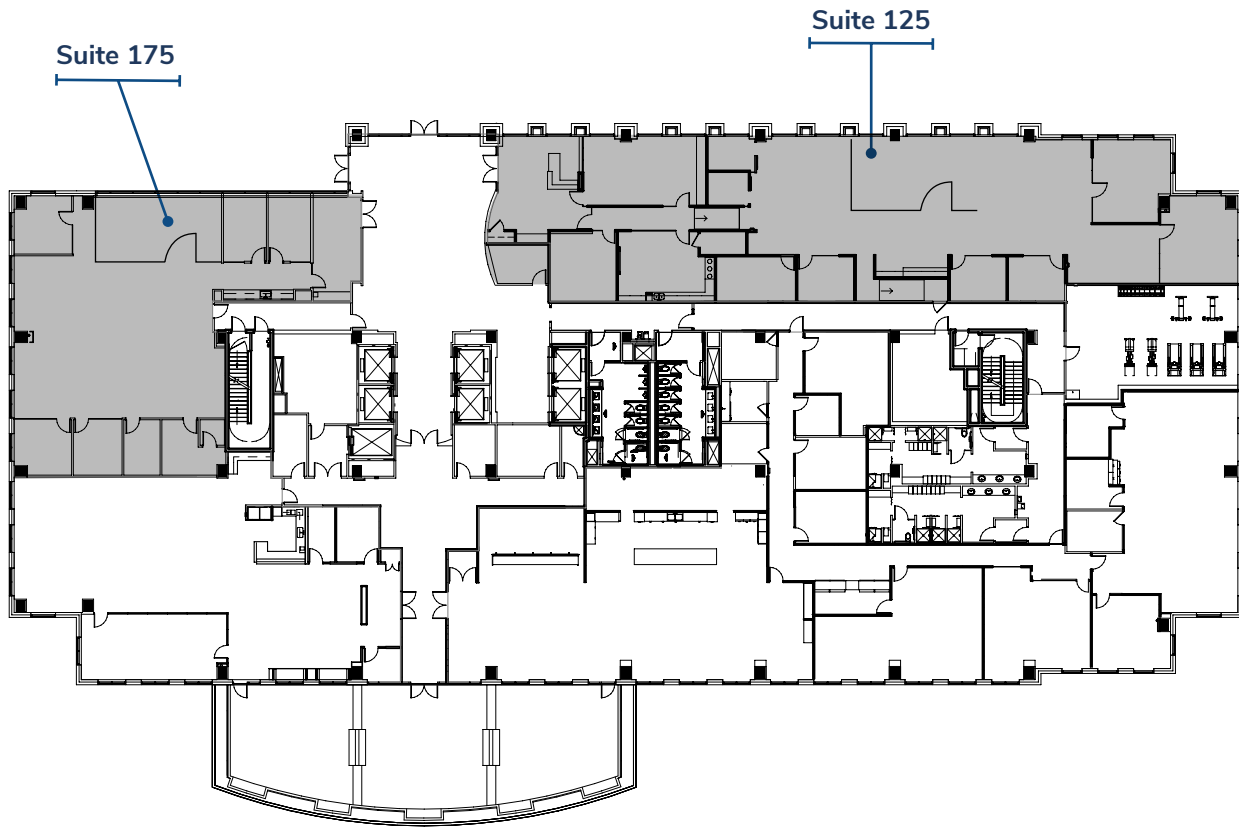
Take a break in the Thistle café and lounge, where nourishing meals and sweeping views come together. With a variety of dining choices, it's the ideal spot to unwind, refuel, and reset.



# First Floor

2901 Via Fortuna Austin, TX 78746

## TERRACE 6



SUITE	SF	AVAILABLE	VT / IMAGES
SUITE 125	6,709 SF	5/1/27	* COMING SOON
SUITE 175	4,456 SF	Now	COMING SOON

FOR LEASING INFORMATION, PLEASE CONTACT:

RACHEL COULTER

rachel.coulter@streamrealty.com  
512.481.3058

TRAVIS ROGERS

travis.rogers@streamrealty.com  
512.481.3059

COLEMAN JACKSON

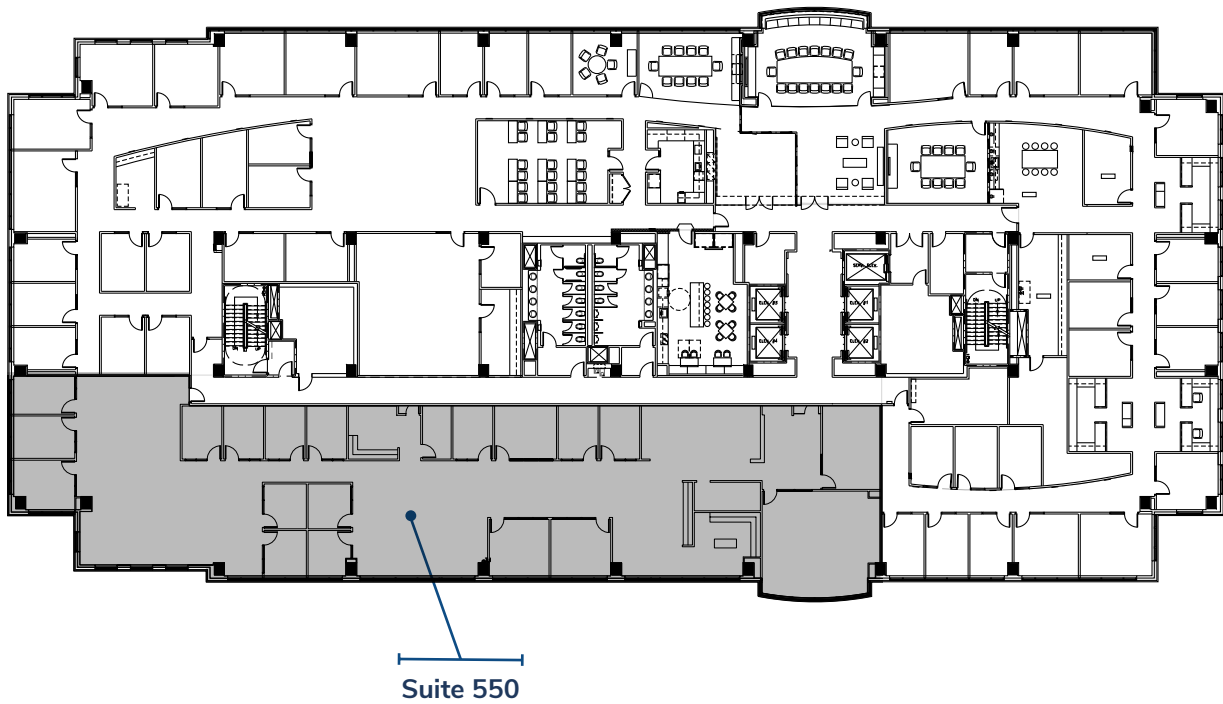
coleman.jackson@streamrealty.com  
512.481.3060



# Fifth Floor

2901 Via Fortuna Austin, TX 78746

## TERRACE 6



SUITE	SF	AVAILABLE	VT / IMAGES
SUITE 550	9,360 SF	Now	

FOR LEASING INFORMATION, PLEASE CONTACT:

**RACHEL COULTER**  
rachel.coulter@streamrealty.com  
512.481.3058

**TRAVIS ROGERS**  
travis.rogers@streamrealty.com  
512.481.3059

**COLEMAN JACKSON**  
coleman.jackson@streamrealty.com  
512.481.3060





RACHEL COULTER  
rachel.coulter@streamrealty.com  
512.481.3058

TRAVIS ROGERS  
travis.rogers@streamrealty.com  
512.481.3059

COLEMAN JACKSON  
coleman.jackson@streamrealty.com  
512.481.3060

