

1401

SYRENTIS CLINICAL RESE

FOR LEASE

1401 N TUSTIN AVE

SANTA ANA, CA

## PROPERTY FEATURES

- Medical and office suites available
- 3-story medical/office building
- Easy access and convenient parking
- Free surface parking (reserved parking available upon request)
- Professionally managed
- Ideally suited for therapists, law firms, doctors and accountants
- Centrally located near restaurants, banks and major freeways
- Asking Rate:
  - Office: \$1.75 MG
  - Medical: \$2.75 MG
  - CAMs: \$0.30 PSF

## AVAILABILITY

SUITE	SIZE	TYPE	DESCRIPTION
120	1,404	Medical	Reception, Waiting Room, Offices
150	1,899	Medical	Reception, Waiting Room, Exam Rooms, Office
300	2,524	Medical, Office, Lab	Open Area, Reception, Private Restroom, Exam Rooms, Offices
330	972	Office, Medical	Open Area, Reception, Waiting Room, Offices

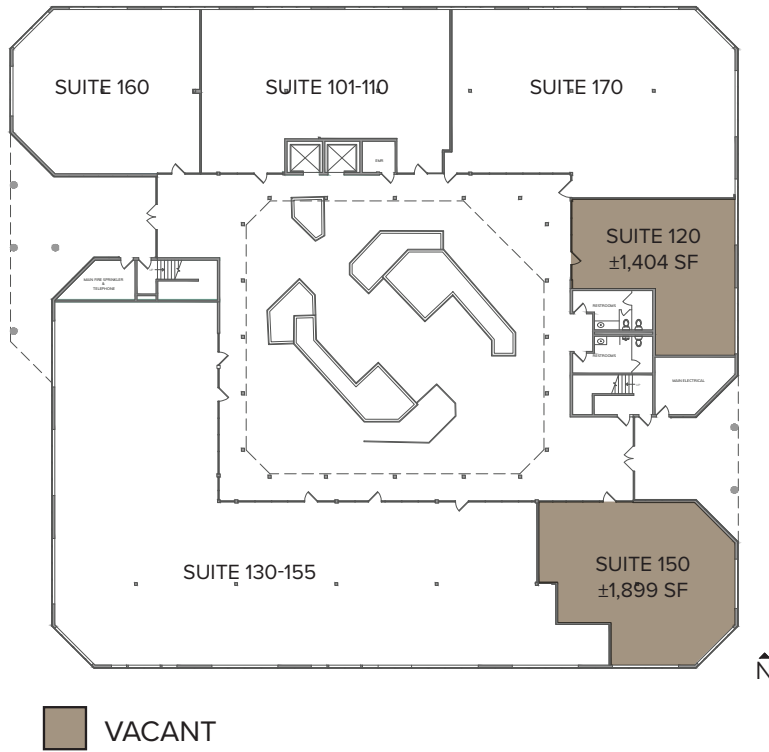
**Eric Darnell**  
Senior Vice President  
License ID# 01888743  
949.790.3157  
edarnell@leeirvine.com

**Mia Pham**  
Senior Vice President  
License ID# 01875144  
949.790.3129  
mpham@leeirvine.com

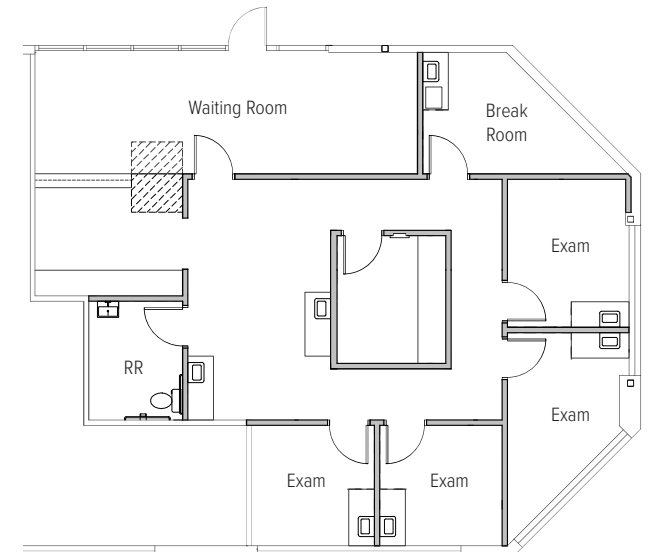
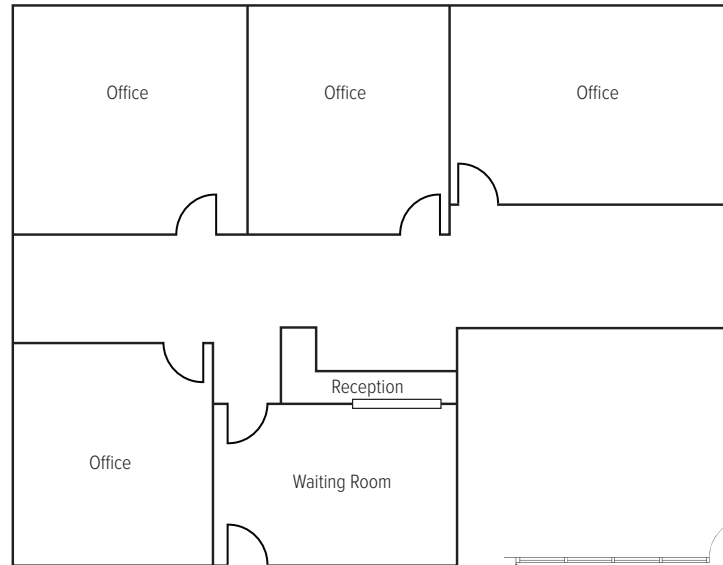
 **LEE & ASSOCIATES**  
COMMERCIAL REAL ESTATE SERVICES

The information contained herein has been obtained from the property owner or other third party and is provided to you without verification as to accuracy. We (Lee & Associates, its brokers, employees, agents, principals, officers, directors and affiliates) make no warranty or representation regarding the information, property, or transaction. You and your attorneys, advisors and consultants should conduct your own investigation of the property and transaction.

### 1<sup>ST</sup> FLOOR PLAN



### SUITE 120 | ±1,404 SQ. FT.



### SUITE 150 | ±1,899 SQ. FT.

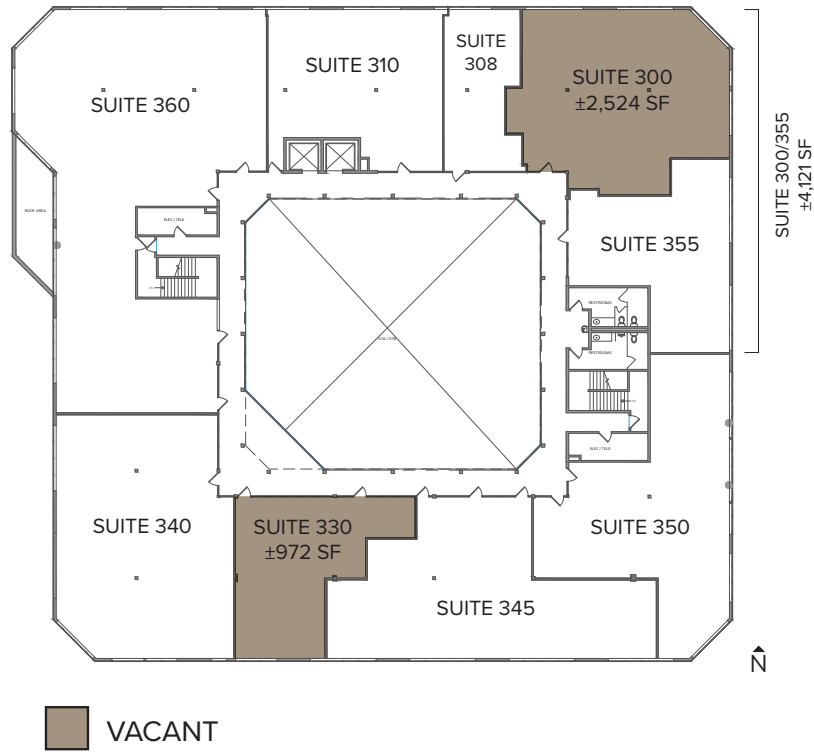
**Eric Darnell**  
Senior Vice President  
License ID# 01888743  
949.790.3157  
edarnell@leeirvine.com

**Mia Pham**  
Senior Vice President  
License ID# 01875144  
949.790.3129  
mpham@leeirvine.com

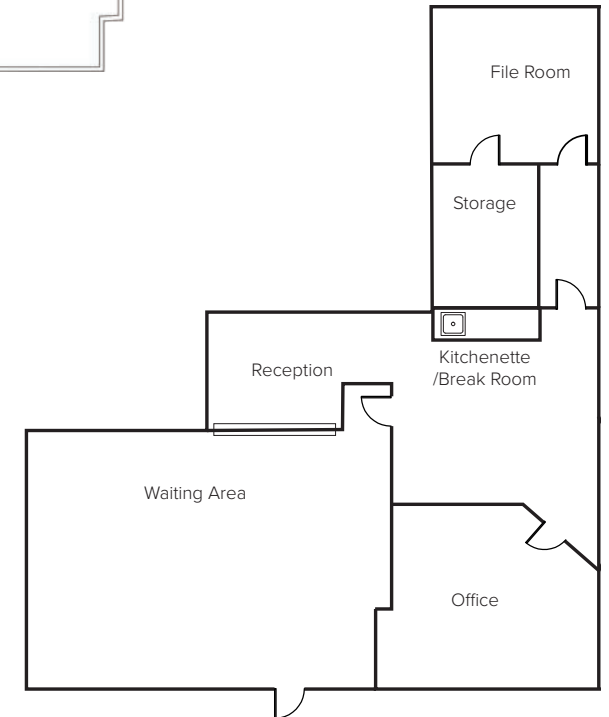
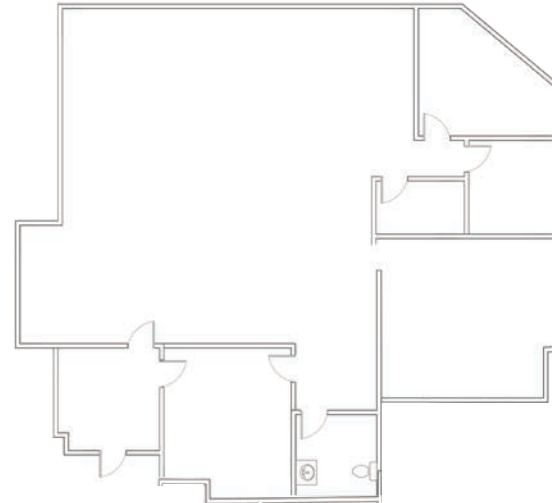
**LEE & ASSOCIATES**  
COMMERCIAL REAL ESTATE SERVICES

The information contained herein has been obtained from the property owner or other third party and is provided to you without verification as to accuracy. We (Lee & Associates, its brokers, employees, agents, principals, officers, directors and affiliates) make no warranty or representation regarding the information, property, or transaction. You and your attorneys, advisors and consultants should conduct your own investigation of the property and transaction.

### 3<sup>RD</sup> FLOOR PLAN



### SUITE 300 | ±2,524 SQ. FT.



### SUITE 330 | ±972 SQ. FT.

**Eric Darnell**  
 Senior Vice President  
 License ID# 01888743  
 949.790.3157  
 edarnell@leeirvine.com

**Mia Pham**  
 Senior Vice President  
 License ID# 01875144  
 949.790.3129  
 mpham@leeirvine.com



FOR LEASE

# 1401 N TUSTIN AVE

SANTA ANA, CA

FOR MORE INFORMATION, CONTACT:

**Eric Darnell**

Senior Vice President

License ID# 01888743

949.790.3157

[edarnell@leeirvine.com](mailto:edarnell@leeirvine.com)

**Mia Pham**

Senior Vice President

License ID# 01875144

949.790.3129

[mpham@leeirvine.com](mailto:mpham@leeirvine.com)