



Prairie Tower Warehouse 1

234,000 SF | SPACE FOR LEASE

NW 128th Street and Meredith Drive
Urbandale, Iowa 50398

(515) 223-4500 | WWW.RRREALTY.COM

R&R
REALTY GROUP



Building Features

- 32' clear height
- ESFR sprinkler system
- Main electrical service 208/120V 3-phase (3000 amps)
- Standard bay sizes: 52' x 260'
 - 13,520 SF
- End-bay sizes: 60' x 260'
 - 15,600 SF
- Column spacing 52' x 50'
- 60' speed Bay
- 6" 4000 psi concrete slab on grade
- 9' x 10' overhead dock doors with levelers/dock bumpers/seals (every bay)
- Reznor heater (every other bay)
- LED lighting package



Site Features

- 120' service court
- 8" pavement at loading dock service court
- 6" pavement at service court and driveways
- Base parking 1 car per 1,000 SF
- Access at Meredith interchange to I-35/80

*Truck parking or outdoor storage available



FACTS

#1

Best place to live in the Midwest for High Salaries and Low Cost of Living- The Ascent, 2021

#5

Best Place to live in the U.S.- U.S. News and World Report, 2020

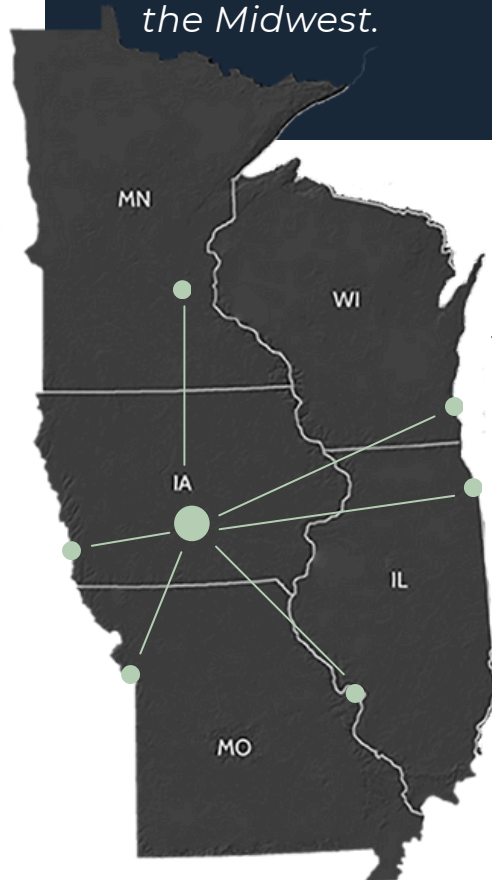
#8

Best City to Live in After the Pandemic- National Association of Realtors, 2020

INTRODUCING

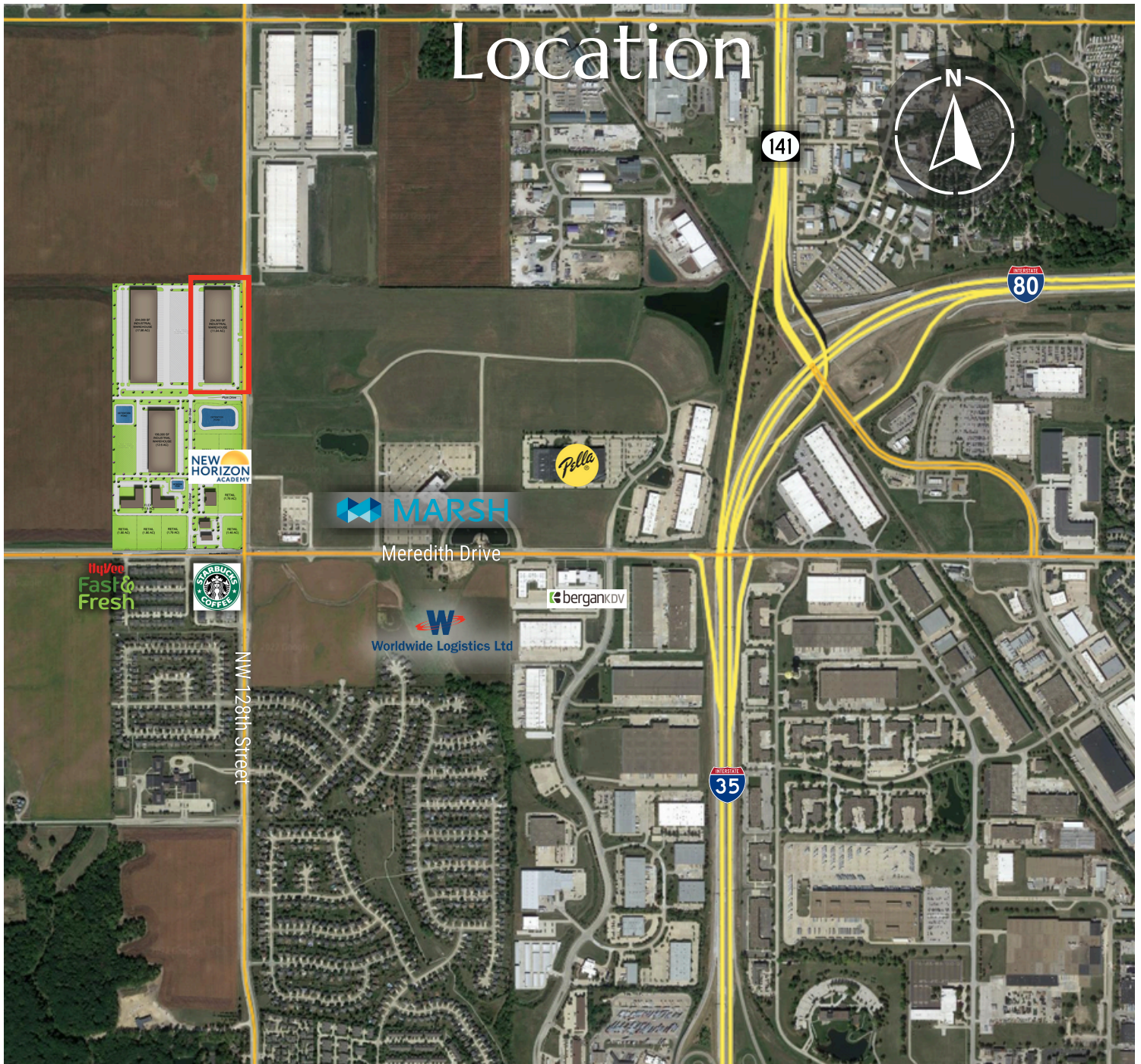
Des Moines

Greater Des Moines (DSM) is vibrant, growing and experiencing tremendous momentum. Metrics such as gross domestic product growth, population growth and employment growth show DSM as one of the strongest metros in the Midwest.



City	Miles
Omaha	134
Kansas City	195
Minneapolis	244
Chicago	333
St.Louis	348
Milwaukee	375

Location



Prairie Tower Business Park is immediately accessible on I-80/I-35 from Meredith Drive with convenient access to downtown Des Moines, major traffic arteries, and the Des Moines International Airport.

