

# Opportunity for Build-to-Suit



Building Renderings

Industrial For Sale or Lease

7200 W. 2100 S.  
Salt Lake City, UT 84044

## Property Highlights

- 160,500 SF proposed building
- 32' Clear height
- 27 Dock high doors
- 111 Car parking spaces
- Located within the Salt Lake Northwest Quadrant industrial area
- Located five (5) minutes from SR-201
- 14 Minutes from Salt Lake International Airport

## Contact:

**Rusty Bollow, SIOR, CCIM, MRED**

Executive Vice President  
+1 801 633 4800  
rusty.bollow@colliers.com

**Bobby Stevens, SIOR**

Senior Vice President  
+1 801 696 9617  
bobby.stevens@colliers.com

**Ethan Wallace**

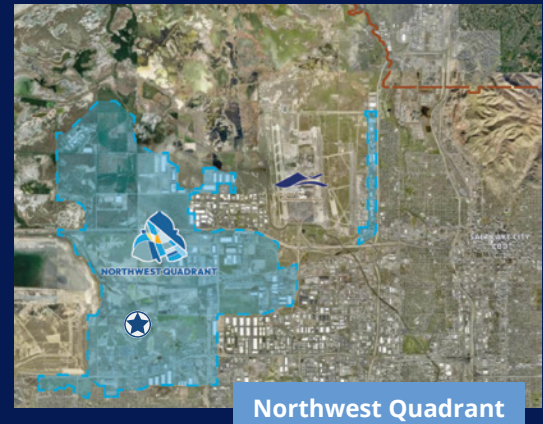
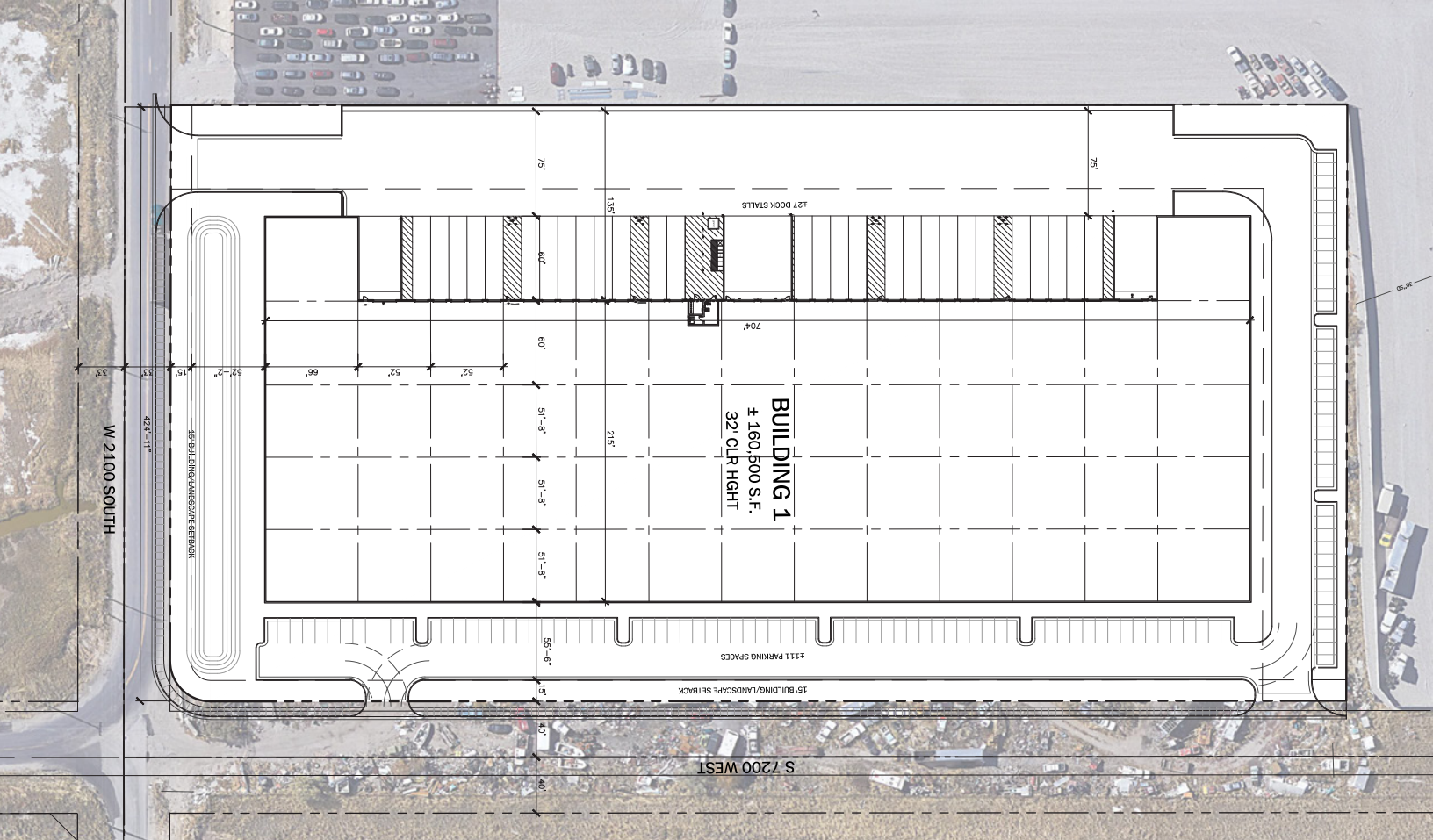
Associate  
+1 901 497 0790  
ethan.wallace@colliers.com



## Colliers

6440 S. Millrock Dr., Suite 500  
Salt Lake City, UT 84121  
Main: +1 801 947 8300  
colliers.com





Salt Lake's Northwest Quadrant is 16,000 acres set in a prime location between two major interstate freeways, vital national railways, and the Salt Lake City International Airport. It contains intermodal facilities, warehouse and distribution centers, a skilled workforce and supportive infrastructure. The North West Quadrant is one of the Utah Inland Port Authority (UIPA) project areas. UIPA works closely with local communities to lead and implement sustainable logistics solutions, invest in education/training and job creation.