

2,417 - 5,000 SF FOR LEASE

OCEANSIDE BUSINESS PARK

3025-3060 Industry St. & 602-624 Garrison St. - Oceanside, CA 92056

PROPERTY DETAILS

- Industrial space for lease
- Select units sprinklered
- IG zoning
- 16' clear height
- Grade level loading
- Ample parking
- Nearby Sprinter station & retail amenities
- Close proximity to I-5, Hwys 76 & 78
- **LEASE RATE: \$1.35/SF - \$1.40/SF + CAM**



For more info contact: Whitney Robinson | whitney@rafpg.com | (858) 314-3116 ext. 107



2,417 - 5,000 SF FOR LEASE

3025-3060 Industry St. & 602-624 Garrison St. - Oceanside

PROPERTY AERIAL



For more info contact: Whitney Robinson | whitney@rafpg.com | (858) 314-3116 ext. 107

No warranty or representation is made to the accuracy of the foregoing information. Terms of sale or lease and availability are subject to change or withdrawal without notice. Any of the foregoing information will need to be separately verified by the buyer or tenant.



2,417 - 5,000 SF FOR LEASE

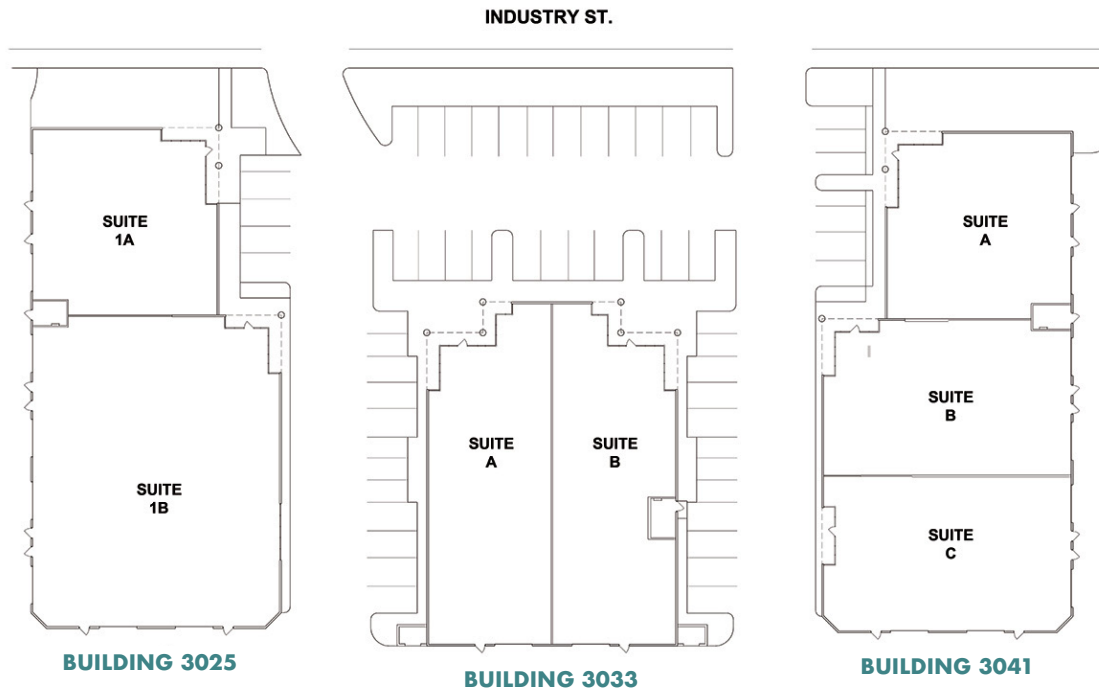
3025-3060 Industry St. & 602-624 Garrison St. - Oceanside

OVERVIEW & AVAILABILITY CHART

Address	Suite	SF	Power	Base Rent	CAM	Availability
3038 Industry St.	109	2,417 SF	TBD	\$1.40/SF + CAM	\$0.35/SF	8/1/2026
602 Garrison	101	5,000 SF	TBD	\$1.35/SF + CAM	\$0.35/SF	6/1/2026

SITE PLAN

Available Suites



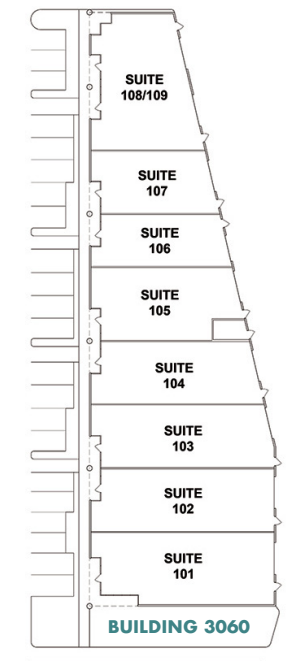
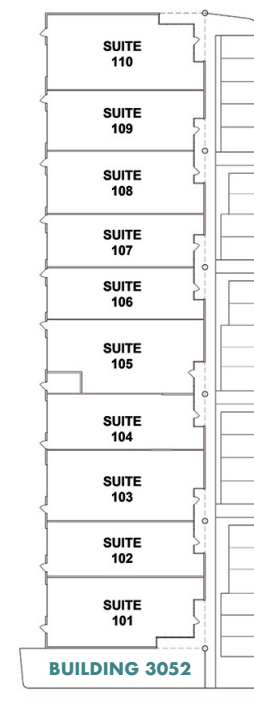
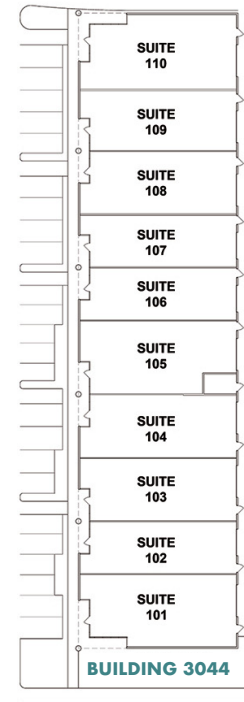
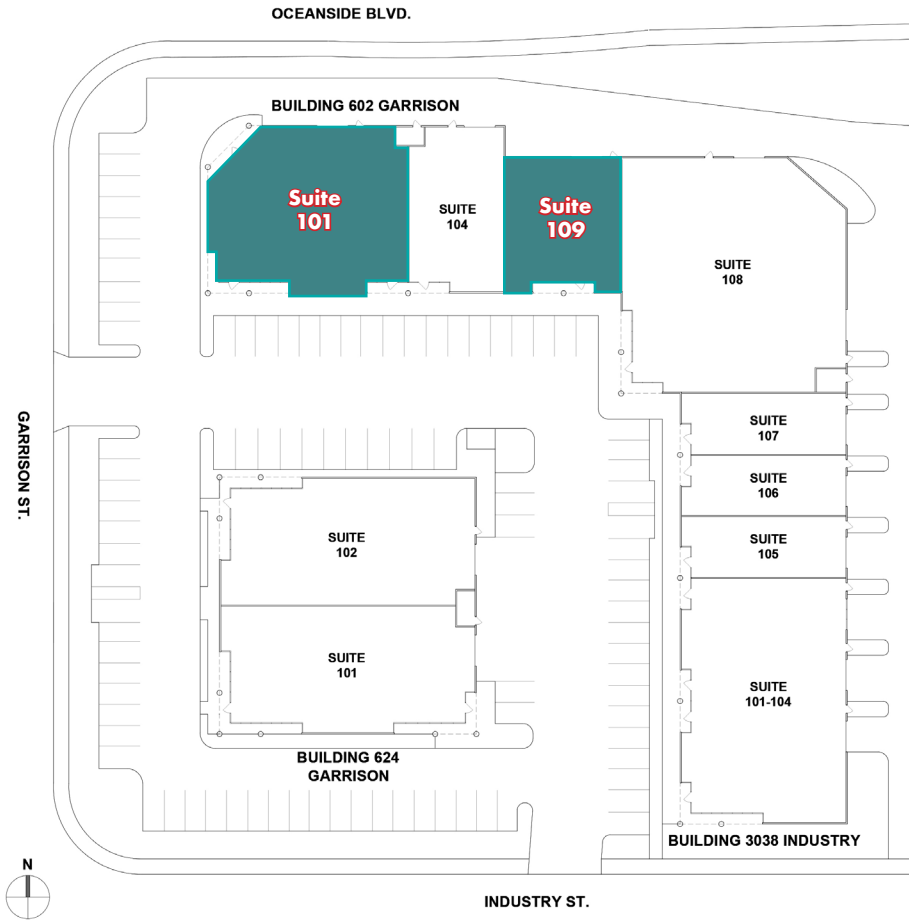
For more info contact: Whitney Robinson | whitney@rafpg.com | (858) 314-3116 ext. 107

No warranty or representation is made to the accuracy of the foregoing information. Terms of sale or lease and availability are subject to change or withdrawal without notice. Any of the foregoing information will need to be separately verified by the buyer or tenant.



2,417 - 5,000 SF FOR LEASE

3025-3060 Industry St. & 602-624 Garrison St. - Oceanside



INDUSTRY ST.

 Available Suites

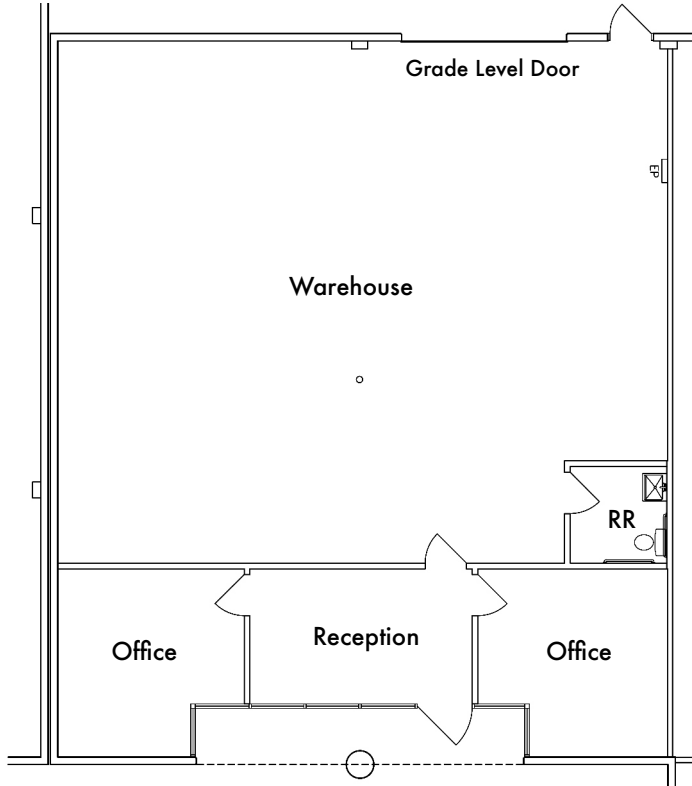
For more info contact: Whitney Robinson | whitney@rafpg.com | (858) 314-3116 ext. 107

No warranty or representation is made to the accuracy of the foregoing information. Terms of sale or lease and availability are subject to change or withdrawal without notice. Any of the foregoing information will need to be separately verified by the buyer or tenant.



2,417 - 5,000 SF FOR LEASE

3025-3060 Industry St. & 602-624 Garrison St. - Oceanside



SUITE DESCRIPTION

Building Address:	3038 Industry St.
Suite:	109
Square Feet:	2,417 SF
Power:	TBD
Lease Rate:	\$1.40/SF + CAM (\$0.35/SF)
Comments:	Reception, 2 Private Offices, Restroom & Warehouse with 1 Grade Level Door
Availability:	8/1/2026

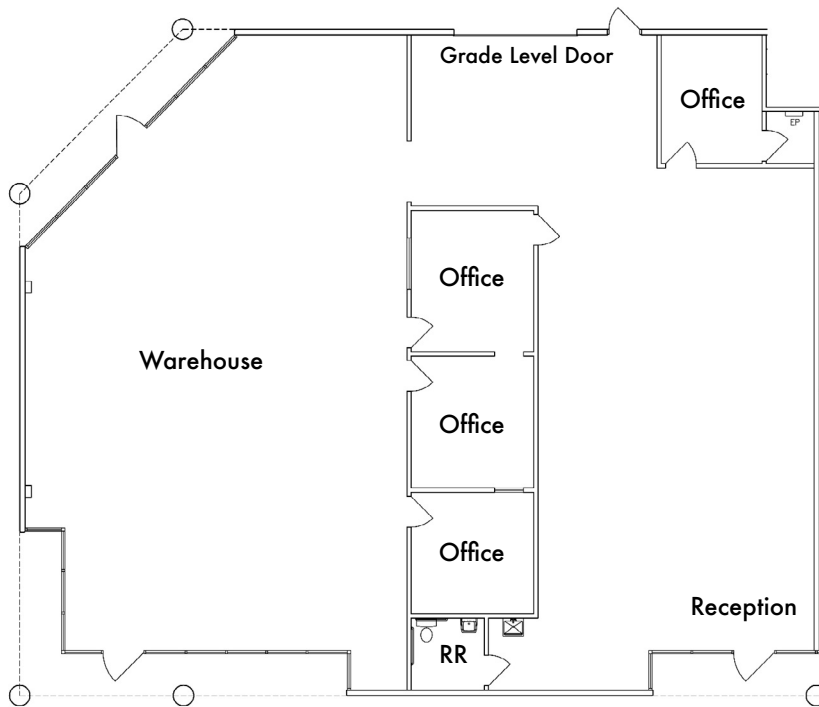
For more info contact: Whitney Robinson | whitney@rafpg.com | (858) 314-3116 ext. 107

No warranty or representation is made to the accuracy of the foregoing information. Terms of sale or lease and availability are subject to change or withdrawal without notice. Any of the foregoing information will need to be separately verified by the buyer or tenant.



2,417 - 5,000 SF FOR LEASE

3025-3060 Industry St. & 602-624 Garrison St. - Oceanside



SUITE DESCRIPTION

Building Address:	602 Garrison
Suite:	101
Square Feet:	5,000 SF
Power:	TBD
Lease Rate:	\$1.35/SF + CAM (\$0.35/SF)
Comments:	Reception, 4 Private Offices, Restroom & Warehouse with 1 Grade Level Door
Availability:	6/1/2026

For more info contact: Whitney Robinson | whitney@rafpg.com | (858) 314-3116 ext. 107

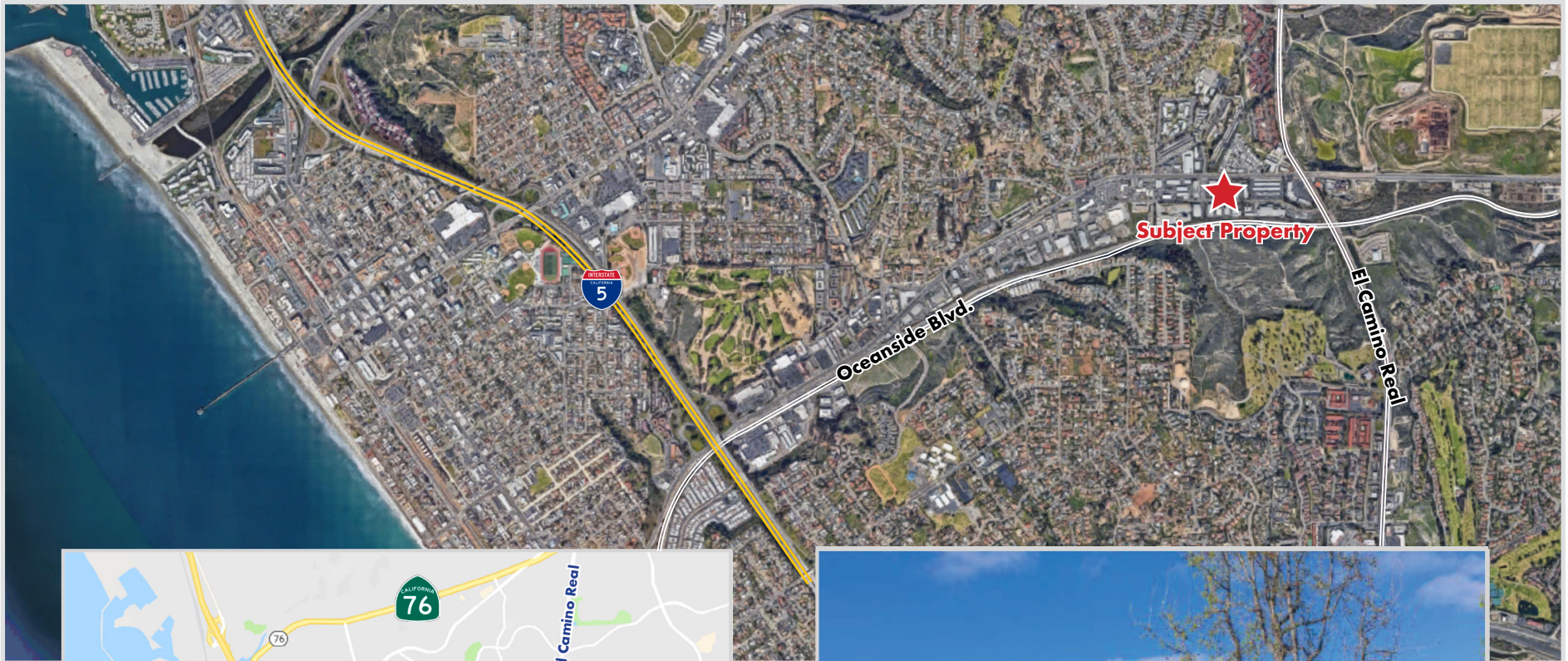
No warranty or representation is made to the accuracy of the foregoing information. Terms of sale or lease and availability are subject to change or withdrawal without notice. Any of the foregoing information will need to be separately verified by the buyer or tenant.



2,417 - 5,000 SF FOR LEASE

3025-3060 Industry St. & 602-624 Garrison St. - Oceanside

AERIAL MAPS



For more info contact: Whitney Robinson | whitney@rafpg.com | (858) 314-3116 ext. 107

No warranty or representation is made to the accuracy of the foregoing information. Terms of sale or lease and availability are subject to change or withdrawal without notice. Any of the foregoing information will need to be separately verified by the buyer or tenant.