

FINISHED COMMERCIAL PADS WITH NEW RETAIL BUILDING NORTH RIVER FARMS - OCEANSIDE, CA

N River Road & Wilshire Road | Oceanside, CA 92057

- Includes a 10,000 SF Maker's Building to be delivered in shell condition
- Three Retail Pads consisting of 1.92 acres to be delivered in finished lot condition
- Additional land designated for parking and event space
- North River Farms - An exclusive new community with high end housing (395 homes in development)

MAKER BUILDING AND OPEN SPACE LOT: \$4,125,000

THREE COMMERCIAL LOTS: \$2,195,000

TOTAL ASKING PRICE: \$6,320,000



LEE & ASSOCIATES
COMMERCIAL REAL ESTATE SERVICES

MATT WEAVER
760.448.2458
mweaver@lee-associates.com
CalDRE Lic# 01367183

AL APUZZO
760.448.2442
aapuzzo@lee-associates.com
CalDRE Lic# 01323215

ALEX BENTLEY
760.448.2492
abentley@lee-associates.com
CalDRE Lic# 02062959



CONTENTS

- 3 aerials
- 6 north river farms community vision
- 7 north river farms planning areas
- 8 location map
- 9 property information
- 10 village core permitted uses
- 11 property photos - maker's building
- 12 property photos - retail pads
- 13 due diligence
- 14 tax map
- 15 demographics



SAN LUIS REY RIVER

LIBBY ELEMENTARY

DEL RIO ELEMENTARY

MELBA BISHOP SKATEPARK

NORTH RIVER FARMS

GIOVANNI WY

DORA WY

NAGATA WY

N RIVER RD

SUBJECT PROPERTY

DOG PARK





CALIFORNIA
76

MISSION
VISTA HIGH

OCEANSIDE
FIRE STATION 9

WILSHIRE RD

DOG PARK

NORTH RIVER
FARMS

N RIVER RD

SUBJECT
PROPERTY

NAGATA WY

GIOVANNI WY

METZ WY

NORTH RIVER
FARMS



MISSION
VISTA HIGH



DOG PARK

PARK & TRAILS

SUBJECT
PROPERTY

MAKER SPACE
10,000 SF

N RIVER RD

NAGATA WY

GIOVANNI WY

NORTH RIVER
FARMS



north river farms planning areas



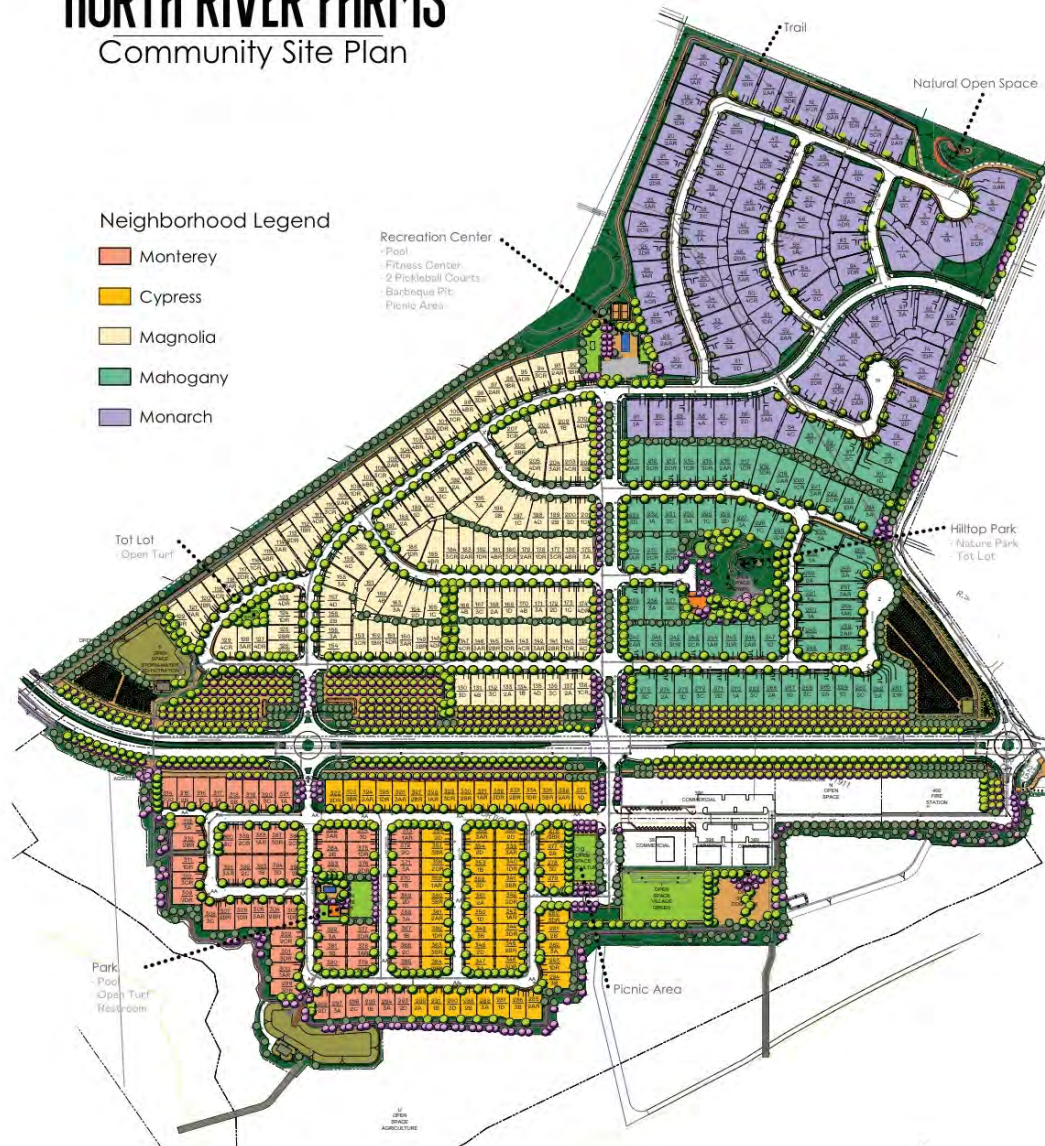
NORTH RIVER FARMS

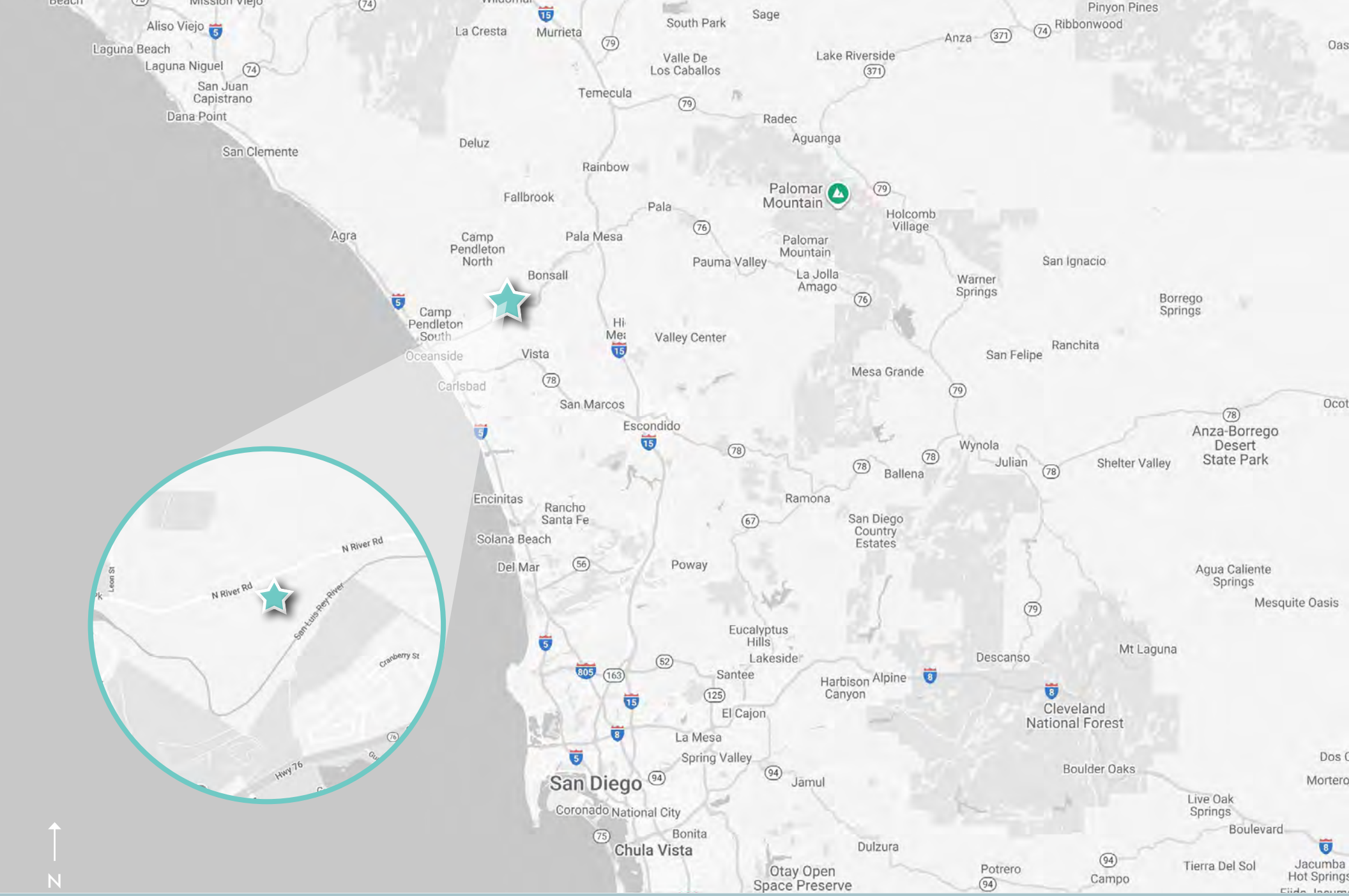
Community Site Plan

Neighborhood Legend

- Monterey
- Cypress
- Magnolia
- Mahogany
- Monarch

- Recreation Center
- Pool
- Fitness Center
- 2 Pickleball Courts
- Barbeque Pit
- Picnic Area





location map

property information

location and property overview:

The subject property is located on the western edge of South Morro Hills in the City of Oceanside and is the Village Core Component of the North River Farms Planned Development Community consisting of 395 single-family homes.

The commercial site consists of approximately 4.618 acres of land. This includes an approximately 1.66-acre parcel with a 10,000 SF "maker's" building which will be delivered in shell condition. The remaining land is 1.922 acres of buildable retail land to be delivered in a finished lot condition, graded, and with utilities stubbed, and 1.034 acres of non-buildable land that is designated for parking or event space.

These retail locations are strategically located overlooking the open space and agriculture to the south and immediately adjacent to the park space.

**Note: The commercial at North River Farms is restricted to a total of 25,000 SF inclusive of the 10,000 SF Maker Space building.*

jurisdiction:

City of Oceanside

apn's & acreage:

- Maker's Space - 157-909-01-00 → 1.662 Acres
 - Commercial Pad - 157-909-02-00 → 0.802 Acres
 - Commercial Pad - 157-909-03-00 → 0.580 Acres
 - Commercial Pad - 157-909-04-00 → 0.540 Acres
 - Open Space - 157-909-07-00 → 1.034 Acres
- TOTAL → 4.618 Acres**

zoning:

Planned Development (PD-29), PA-2 Village Core

general plan:

Planned Development

school district:

Oceanside Unified School District

services:

Water/Sewer: City of Oceanside
Gas/Electric: San Diego Gas & Electric (SDG&E)
Fire: City of Oceanside
Police: City of Oceanside

asking price:

Maker Building and Open Space Lot: \$4,125,000
Three Commercial Lot: \$2,195,000
Total Asking Price: \$6,320,000



village core permitted uses

KEY	
P	Permitted
U	Use Permit Required
L	Limited Subjected to Specific Regulations per Article 11 C Commercial Districts of the City of Oceanside Zoning Ordinance
A	Administrative Conditional Use Permit

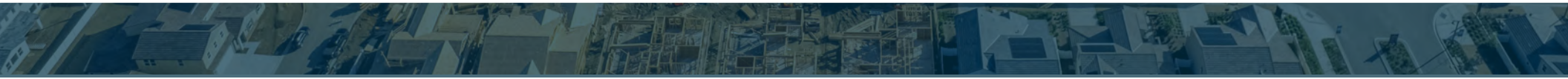
TABLE 4-5: VILLAGE CORE ALLOWABLE USES	
Use Type	Permit Type
RESIDENTIAL USE CLASSIFICATIONS	
Day Care, Limited	U
Live/Work Quarters	U
Multifamily Residential	P
Single-Family Residential	P
PUBLIC AND SEMIPUBLIC USE CLASSIFICATIONS	
Child Care	U
Clubs and Lodges	U
Cultural Institutions	L27
Daycare, General	U
Parks and Recreation Facilities	P
Public Safety Facilities	U
Resource Centers	A
Schools, Public or Private	A
COMMERCIAL USE CLASSIFICATIONS	
Animal Sales and Services Animal Grooming Animal Retail Sales	P P P
Artists Studios	P
Banks and Savings and Loans Drive-Thru / Drive-Up Services Bank Self Service Facilities (ATMs)	P A L21
Bars and Cocktail Lounges	
Brewery, Craft	U
Catering Services	P
Commercial Recreation and Entertainment	L27
Food and Beverage Kiosk	A
Food and Beverage Sales	L5
Horticultural, Limited	P
Nurseries	L31
Offices, Business and Professional	P
Personal Improvement Services	L25
Personal Care Services Small Scale	P

TABLE 4-5: VILLAGE CORE ALLOWABLE USES	
Use Type	Permit Type
COMMERCIAL USE CLASSIFICATIONS (con't)	
Restaurants Full Service w/Full Alcohol w/Live Entertainment Fast Food	P U L27 P
Retail Sales (Suggested uses include: Woodworking & Metal Shop and Sales, Ceramic Art, Glass Art and Sales, Custom Jewelry Manufacture and Sales, Perfumery)	P
Secondhand Sales	L26
Travel Services	P
Visitor Accomadations Bed and Breakfast Inns Hotels, Motels and Time Shares	A U
Winery, Craft	U
INDUSTRIAL USE CLASSIFICATIONS	
Food Processing, Limited (Suggested uses include: Bakery, Confectionary, Coffee Roasting and Sales, Specialty Olive Oil Press and Sales)	L22
Industry, Custom	L8
Industry, Limited	L8
AGRICULTURAL AND EXTRACTIVE USE CLASSIFICATIONS	
Animal Husbandry	U
Crop Production	L24
Wineries	U
Assemblies, ceremonies and weddings (Suggested uses include: Farmers Markets, Arts and Craft Shows (Outdoor), Live Entertainment Events, Street Fairs)	U
TEMPORARY USE CLASSIFICATIONS	
Agricultural Specialty Sales, Seasonal	P
Yard/Garage Sales	U

property photos - maker's building



property photos - retail pads

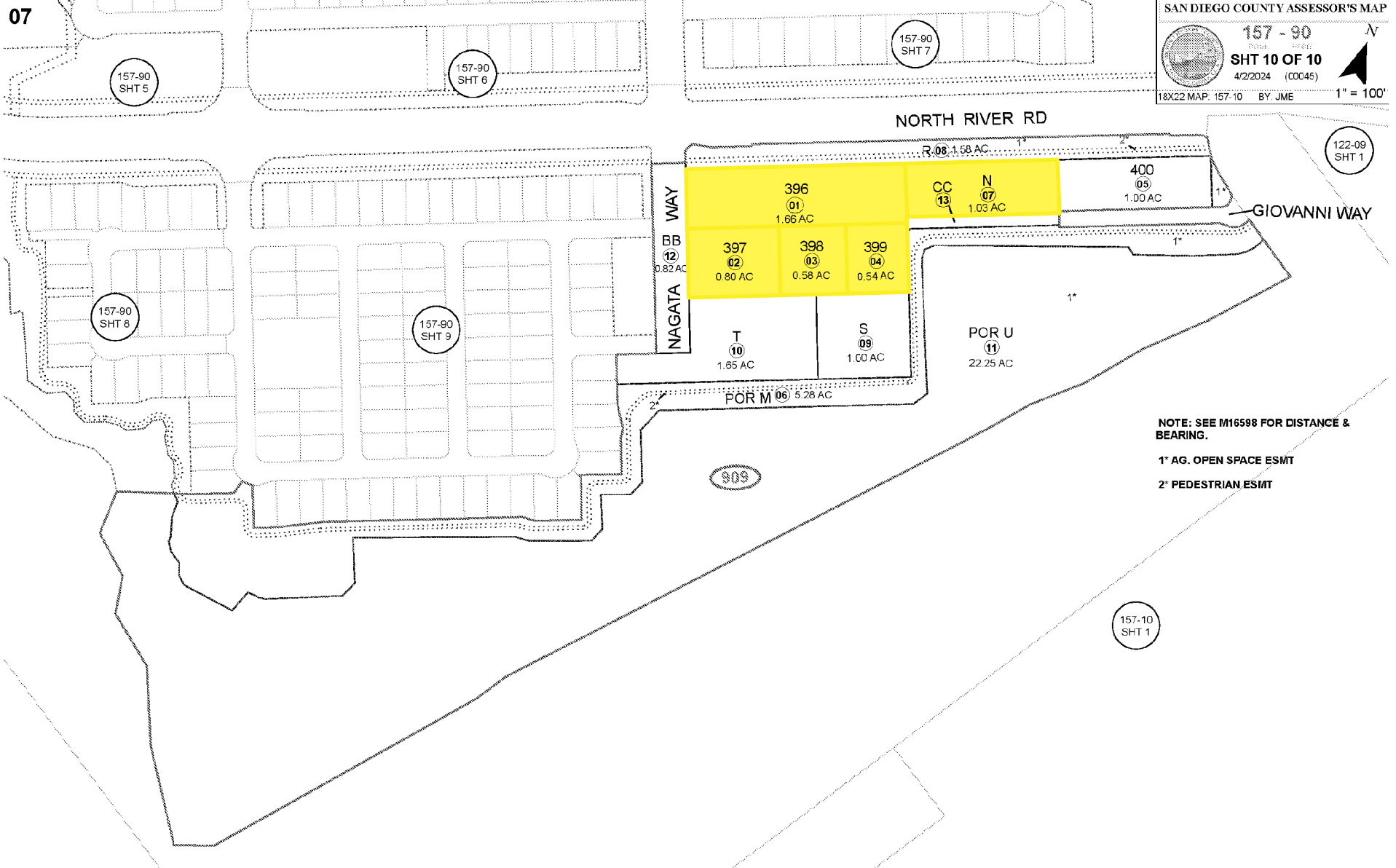


CLICK LINKS BELOW TO DOWNLOAD DUE DILIGENCE DOCUMENTS



- [Dry Utility Plans](#)
- [Landscape Plans](#)
- [Makers Space Approved Plans](#)
- [Makers Space Permit](#)
- [NRF Planned Development](#)
 - [PA-2 Village Core Development](#)
- [NRF Future Commercial](#)
- [NRF Maker's Space Elevation](#)
- [NRF Maker's Space Plan](#)
- [Precise Grading Plan](#)
- [Title Report](#)

tax map



demographics

1 mile



population
8,512



estimated households
2,636



average household income
\$159,856



median household income
\$137,989



total businesses
135

3 miles



population
80,407



estimated households
26,443



average household income
\$149,072



median household income
\$122,430



total businesses
1,635

5 miles



population
202,971



estimated households
65,849



average household income
\$136,895



median household income
\$109,316



total businesses
5,719



LEE & ASSOCIATES HEREBY ADVISES ALL PROSPECTIVE PURCHASERS AS FOLLOWS:

The information contained in this Marketing Brochure has been obtained from sources we believe to be reliable. However, Lee & Associates has not and will not verify any of this information, nor has Lee & Associates conducted any investigation regarding these matters. Lee & Associates makes no guarantee, warranty or representation whatsoever about the accuracy or completeness of any information provided.

As the Buyer of real estate, it is the Buyer's responsibility to independently confirm the accuracy and completeness of all material information before completing any purchase. This Marketing Brochure is not a substitute for your thorough due diligence investigation of this opportunity. Lee & Associates expressly denies any obligation to conduct a due diligence examination of this Property for Buyer. Any projections, opinions, assumptions or estimates used in this Marketing Brochure are for example only and do not represent the current or future performance or value of this property. The value of the property to you depends on factors that should be evaluated by you and your tax, financial, consultants and legal advisors. Buyer and Buyer's tax, financial, legal, consultants and all advisors should conduct a careful, independent investigation of any property to determine to your satisfaction the suitability of the property for your needs.

Like all real estate, this property carries significant risks. Buyer and Buyer's consultants, legal and financial advisors must request and carefully review all legal and documents related to the property. Any info provided including fees and costs are not guaranteed and should be verified by Buyer. These figures are subject to change at any time based on market, economic, environmental or other conditions. Buyer is responsible for conducting his/her own investigation of all matters affecting the intrinsic value of the property and the value of any potential development or use of the property.

By accepting this Marketing Brochure you agree to release Lee & Associates and hold it harmless from any kind of claim, cost, expense, or liability arising out of your investigation and/or purchase of this property.



for more information, contact:

MATT WEAVER
760.448.2458
mweaver@lee-associates.com
CalDRE Lic# 01367183

AL APUZZO
760.448.2442
aapuzzo@lee-associates.com
CalDRE Lic# 01323215

ALEX BENTLEY
760.448.2492
abentley@lee-associates.com
CalDRE Lic# 02062959