

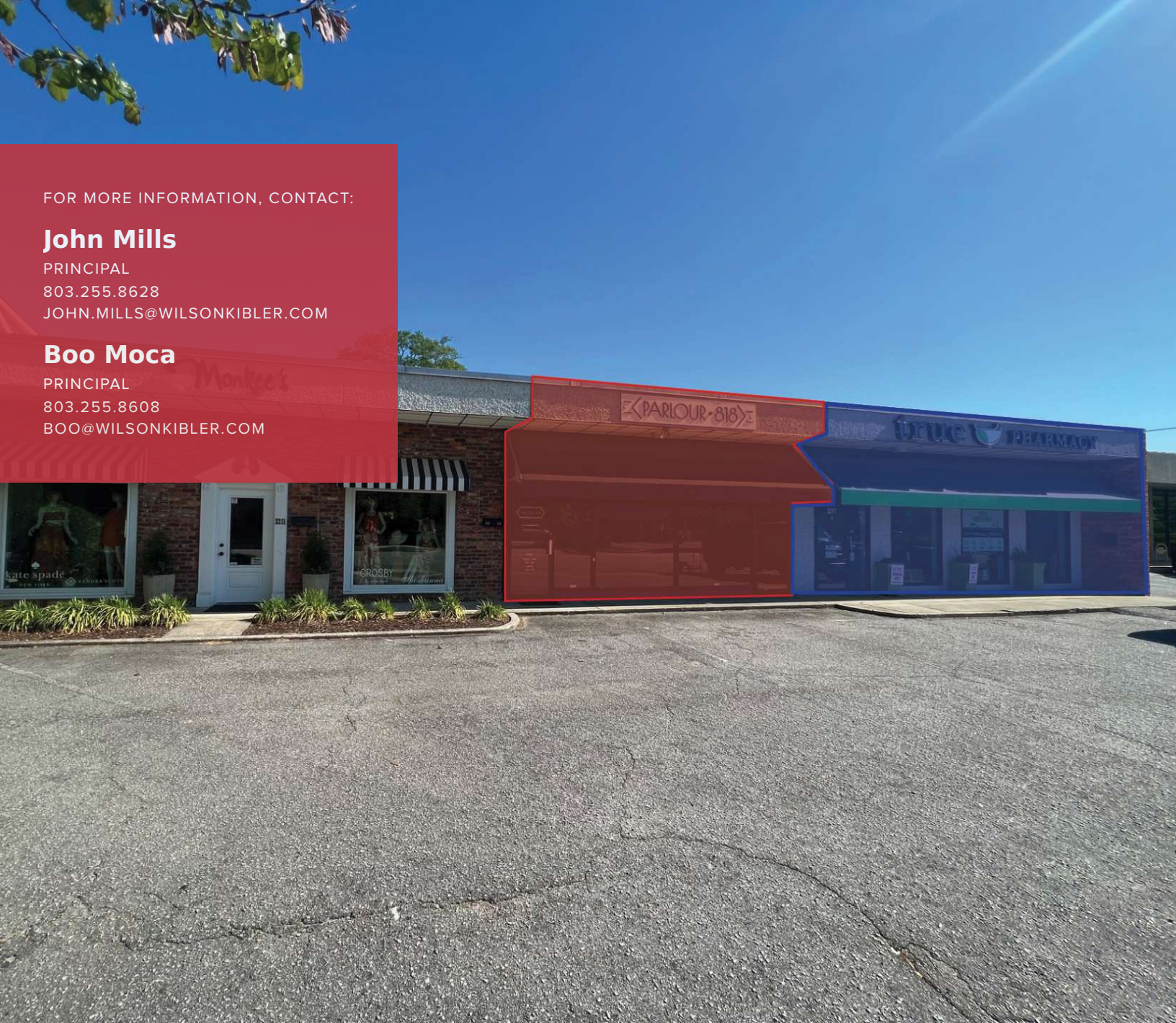
FOR MORE INFORMATION, CONTACT:

John Mills

PRINCIPAL
803.255.8628
JOHN.MILLS@WILSONKIBLER.COM

Boo Moca

PRINCIPAL
803.255.8608
BOO@WILSONKIBLER.COM



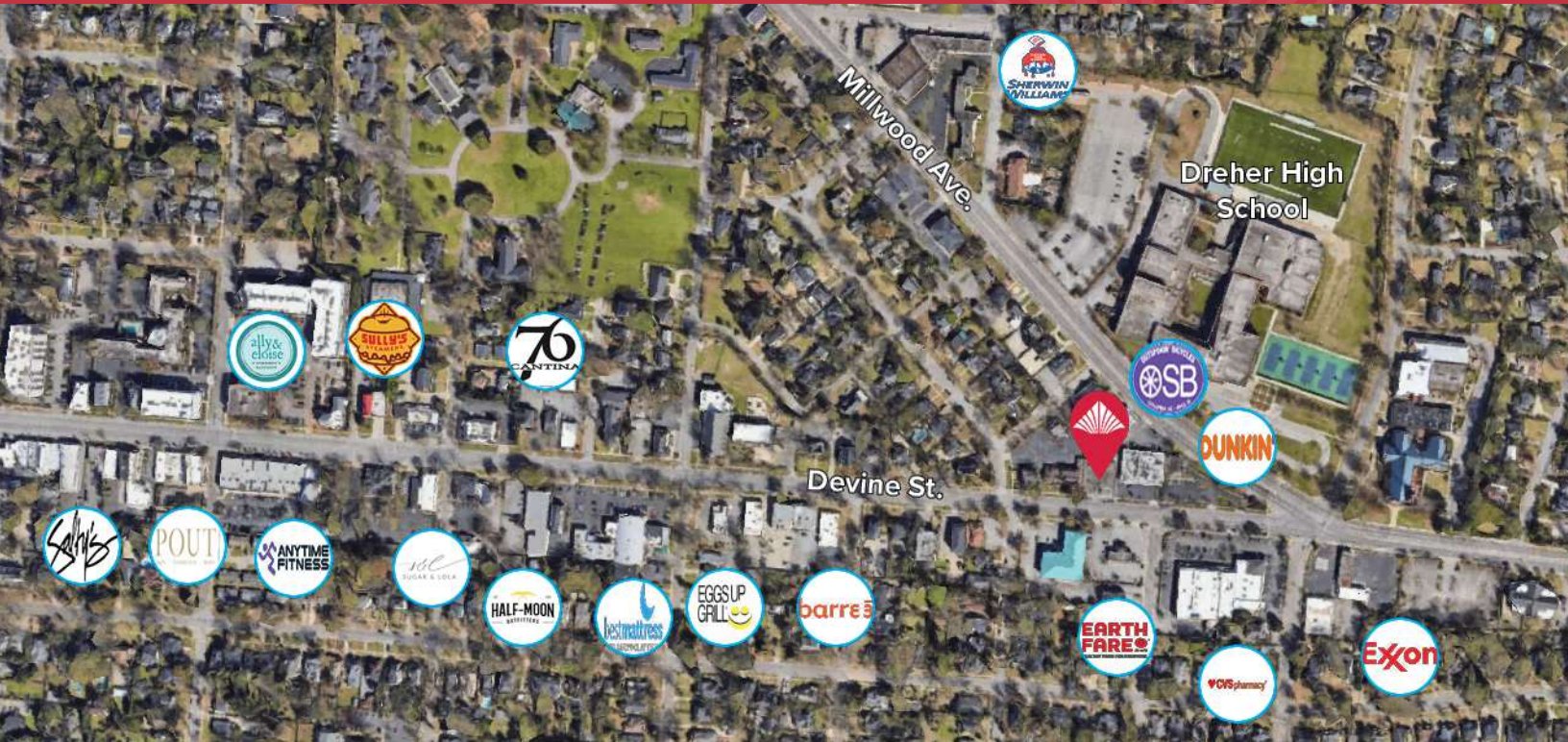
RETAIL PROPERTY FOR LEASE

3211 Devine St

COLUMBIA, SC 29205



3211 DEVINE ST.



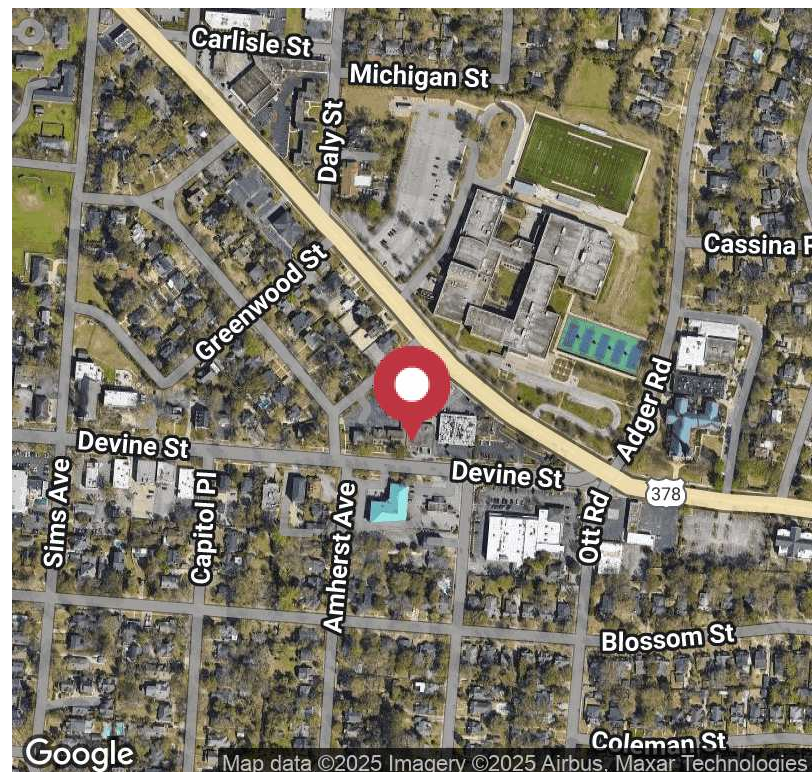
Property Description

- 17 Surface Parking Spaces
- Great Visibility on Devine St
- Convenient to Dining and Shopping Opportunities
- Devine St: 14,400 VPD
- Milwood Ave: 21,400 VPD

Offering Summary

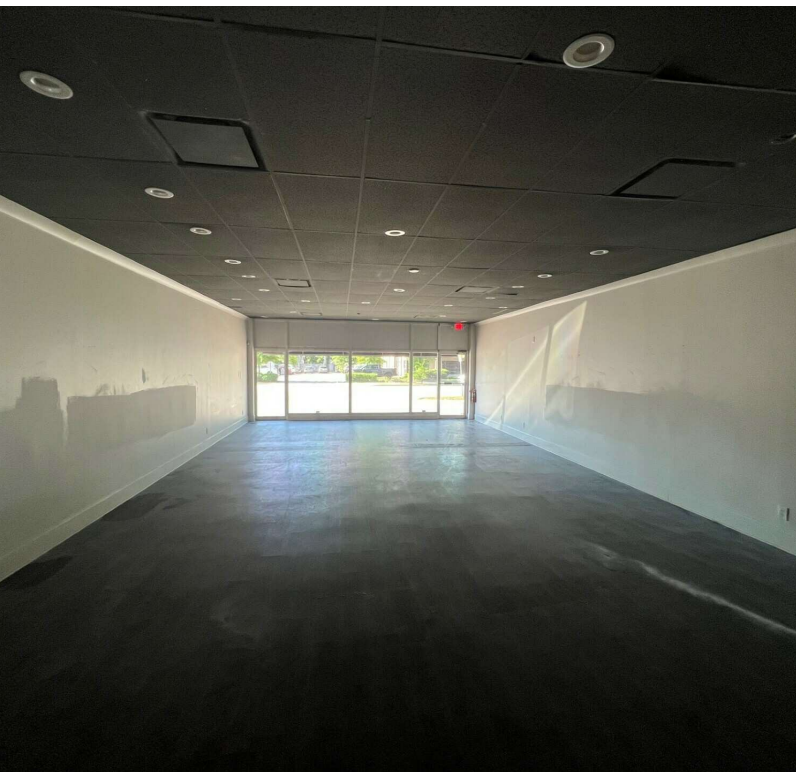
Lease Rate:	\$22.50 SF/yr (NNN)
Available SF:	2,100 & 1,960 SF

Demographics	1 Mile	2 Miles	3 Miles
Total Households	5,681	19,157	34,548
Total Population	11,560	42,736	81,504
Average HH Income	\$127,707	\$91,851	\$85,803



John Mills | Principal | 803.255.8628 | john.mills@wilsonkibler.com
 Boo Moca | Principal | 803.255.8608 | boo@wilsonkibler.com

MIDDLE UNIT



John Mills | Principal | 803.255.8628 | john.mills@wilsonkibler.com
Boo Moca | Principal | 803.255.8608 | boo@wilsonkibler.com