

# 200 N St. Mary's Street

## Suite 100 - Beeville, TX



Cherylyn Boyd

361-585-0300

cherylyn@stonewaterproperties.com

www.stonewaterproperties.com

LARGE, BRIGHT OFFICE SPACE AVAILABLE NOW



### The Unit

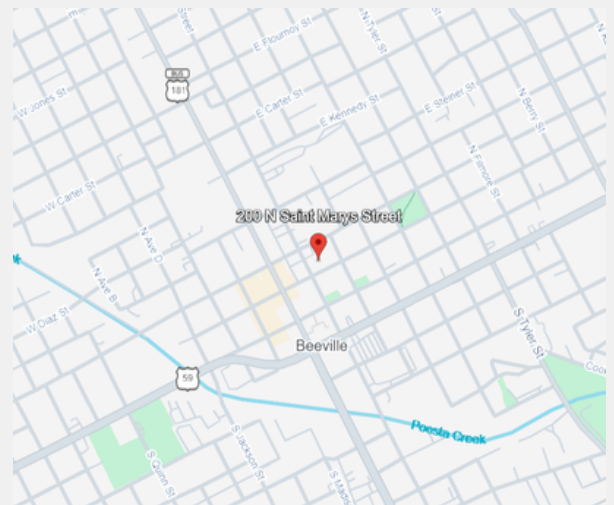
Centrally located between Corpus Christi and Victoria, this 8,275 SF office space features include a bright reception area with large windows along N. St. Mary's Street, multiple private offices, washrooms, a break room, and conference space. Ample on-site parking is available at both the front and rear of the building.

Ideal for medical or health services, call centers, education/training, and other professional uses.

### Scan to Learn More



<b>Total Square Footage</b>	8,275 SF (approx.)
<b>Base Rent</b>	\$9.00 NNN
<b>Availability</b>	Immediate

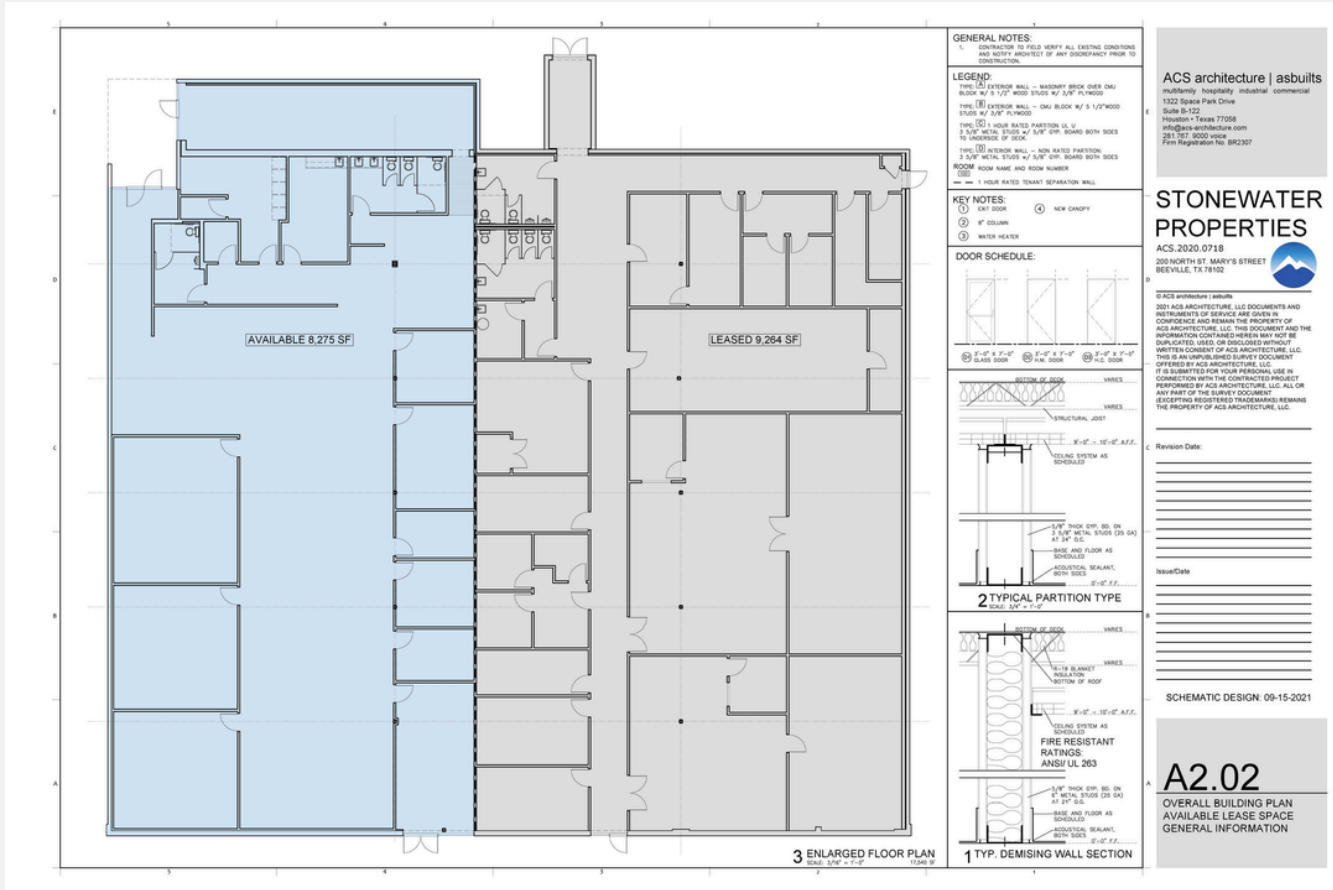


# 200 N St. Mary's Street

## Suite 100 - Beeville, TX



### FLOOR PLAN



Scan to Learn More



**Cherylyn Boyd**

361-585-0300  
 cherylyn@stonewaterproperties.com

www.stonewaterproperties.com