



## **LORIA ANSLEY**

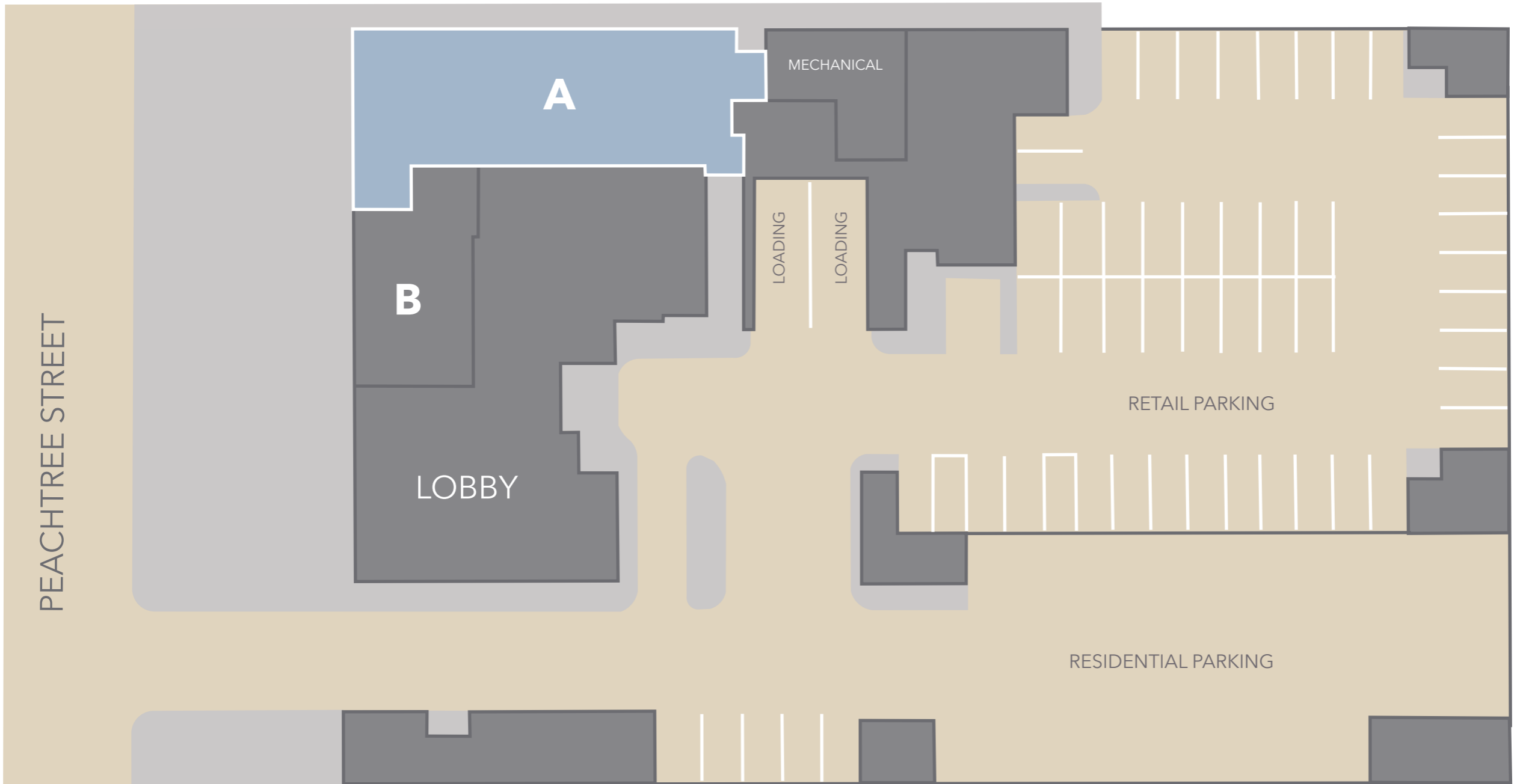
1441 Peachtree Street NE  
Atlanta, Georgia 30309

Peachtree Street  
& W Peachtree Street

Loria Ansley is a brand new, high-end live-work-play community in Midtown Atlanta's Arts district. This highly amenitized building was built with amazing quality and design while putting an emphasis on how every part of the building functions and feels. Currently the property has one 3,177 square foot retail space available.



Bill Dabney  
(404) 237 2972  
[Leasing@cartelgroup.com](mailto:Leasing@cartelgroup.com)



Suite	Tenant
A	<b>AVAILABLE (3,177 SF + 1,089 SF Patio)</b>
B	San Francisco Coffee Roasting Co.



# LORIA ANSLEY

1441 Peachtree Street  
Atlanta, Georgia 30309



## DEMOGRAPHIC SNAPSHOT

2025

	1 mile	3 mile	5 mile
Population	31,398	202,750	429,124
Average HHI	\$143,498	\$134,571	\$132,883
Median Age	35.9	34.8	35.8
Total Households	18,763	104,290	207,307
Daytime Employees	48,784	245,413	521,293

## TRAFFIC COUNT

2025

Peachtree Street & 16th Street	16,276 aadt
--------------------------------	-------------



Bill Dabney  
(404) 237 2972  
Leasing@cartelgroup.com



## Legend:



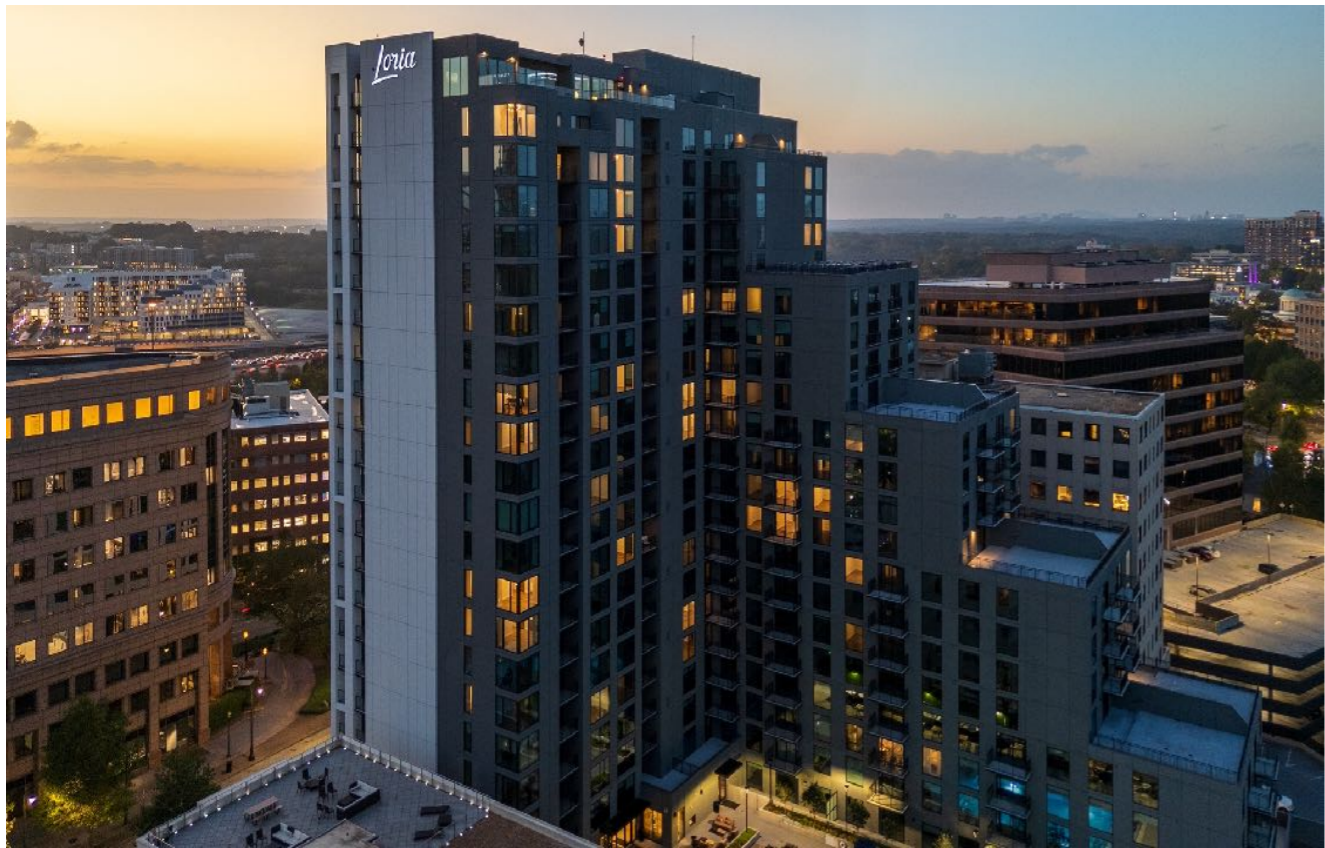
Restuarants



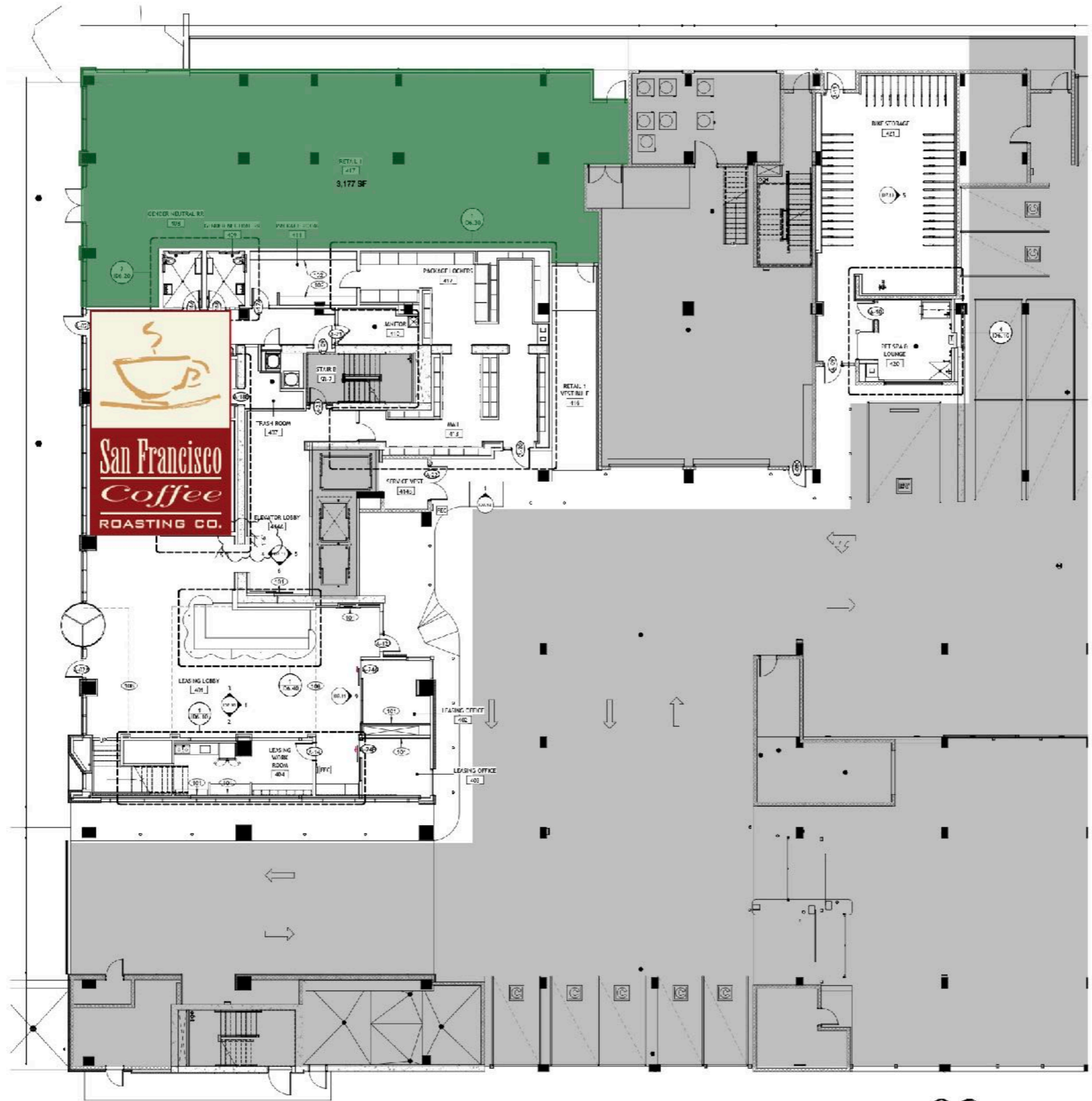
Hotels



Arts & Entertainment







1 REFERENCE PLAN- LEVEL 4 - PARTIAL  
1/8" = 1'-0"

