

Granite State Commerce Park - Co...

1650 Route 16, Center Ossipee, NH 03814



Presented by
SNH Industrial Park



Price: \$12.80 /SF/YR

www.granitestatecommercepark.com

We are now actively leasing our Contractor Bays at Granite State Commerce Park right on major Route 16 in Ossipee NH! Granite State Commerce Park is committed to providing large units, at affordable rates to accommodate sizable equipment for our tenants we serve. . Our tenants are designated their own account through our online portal which makes payments, inquiries, and all communication seamless! We are conveniently located right on major Route 16 in Ossipee! Our building is framed with industrial grade metal ensuring safety of unit contents. The building's foundation was poured with high grade material allowing for maximum weight capacity. Our units have ample office space combined with sizable warehouse space with high bay commercial doors. This combination gives versatility for small businesses to run efficiently and provide a brick and mortar space of new construction!

Granite State Commerce Park - Contractor Bays

1650 Route 16, Center Ossipee, NH 03814



Actively leasing our Contractor Bays at Granite State Commerce Park.
Our building is framed with industrial grade metal ensuring safety of unit contents.

Rick Tessari

rickmcfarley@gmail.com

(603) 651-8301

SNH Industrial Park

Plaistow, NH 03865



Granite State Commerce Park - Contractor Bays

1650 Route 16, Center Ossipee, NH 03814

1650 Route 16, Center Ossipee, NH 03814



Full View

Listing space

1st Floor

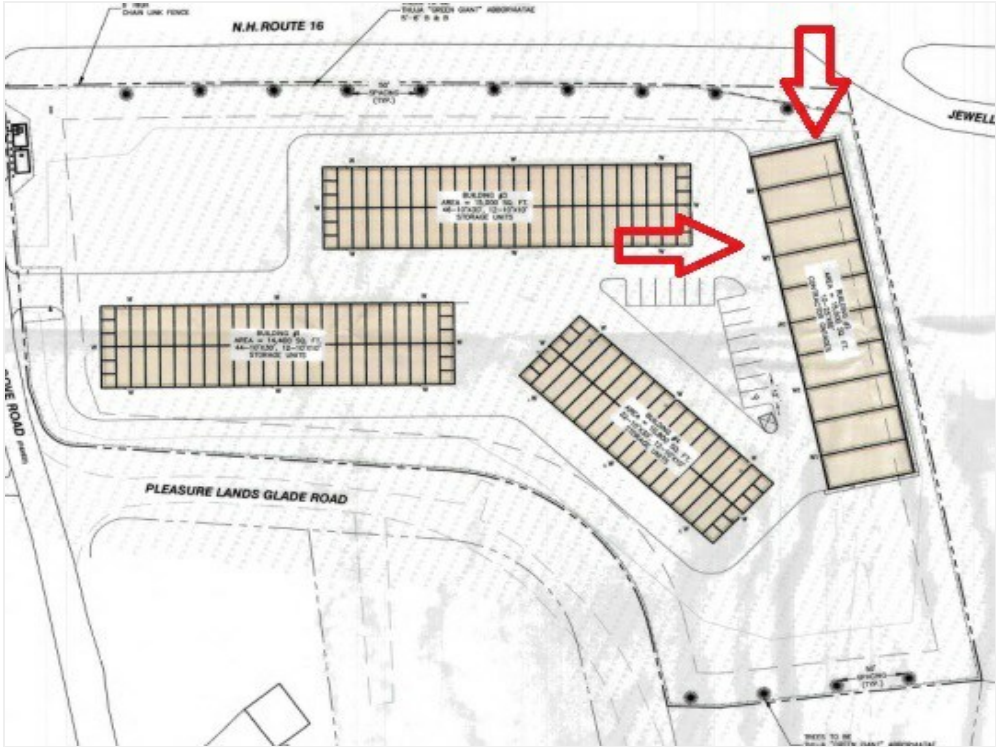
Space Available	1,500 SF
Rental Rate	\$12.80 /SF/YR
Date Available	Now
Service Type	Plus All Utilities
Space Type	Relet
Space Use	Industrial
Lease Term	Negotiable

www.granitestatecommercepark.com We are now actively leasing our Contractor Bays at Granite State Commerce Park right on major Route 16 in Ossipee NH! Granite State Commerce Park is committed to providing large units, at affordable rates to accommodate sizable equipment for our tenants we serve. . Our tenants are designated their own account through our online portal which makes payments, inquiries, and all communication seamless! We are conveniently located right on major Route 16 in Ossipee! Our building is framed with industrial grade metal ensuring safety of unit contents. The building's foundation was poured with high grade material allowing for maximum weight capacity. Our units have ample office space combined with sizable warehouse space with high bay commercial doors. This combination gives versatility for small businesses to run efficiently and provide a brick and mortar space of new construction!

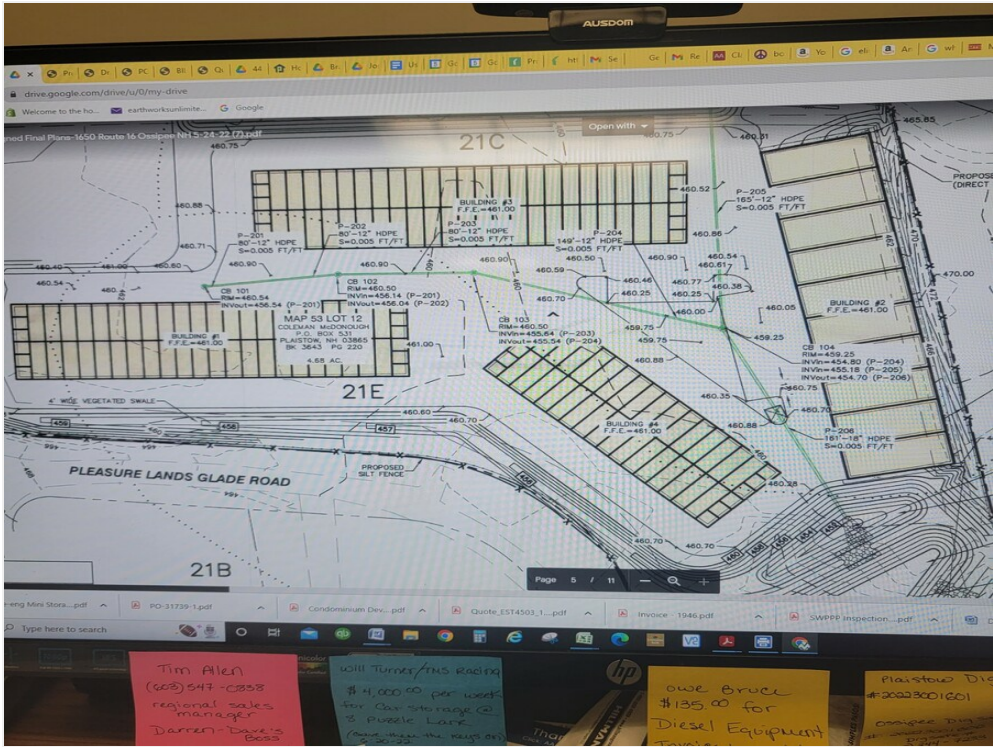
Granite State Commerce Park - Contractor Bays

1650 Route 16, Center Ossipee, NH 03814

Property Photos



With arrows



Building Photo

Granite State Commerce Park - Contractor Bays

1650 Route 16, Center Ossipee, NH 03814

Location

