

1440 Sheffler Drive

Chambersburg, PA

Key Facts

Property type Industrial space

Building size 355,200 SF

Space available 177,600 SF



Contact Us

Learn more about this property or schedule a tour by reaching out to our local investment and leasing officer.

Eli Gurwitz

+1 (267) 431-2495

eli.gurwitz@eqtpartners.com

1440 Sheffler Drive

Chambersburg, PA

BUILDING SPECIFICATIONS

Total Building Size: 355,200 SF

Available Space: 177,600 SF

Year Built: 1996

Office Space: 6,456 SF

Column Spacing: 60'w x 40'd typical

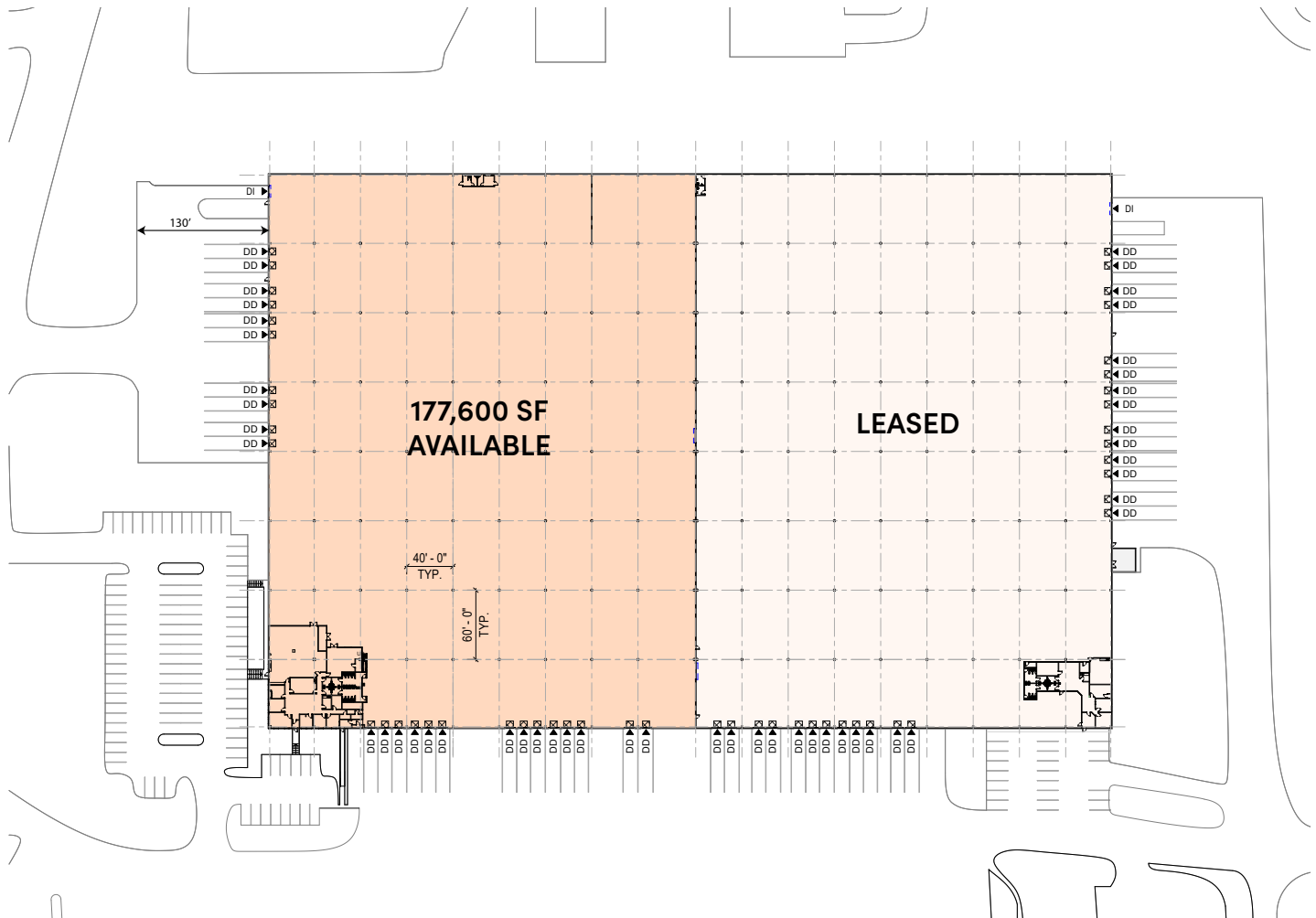
Lighting: LED fixtures with motion sensors

Loading Doors: 24 (equipped)

Drive-In Doors: 1

Car Parking: 86 spaces

Fire Protection: ESFR sprinkler system



Contact Us

Learn more about this property or schedule a tour by reaching out to our local investment and leasing officer.

Eli Gurwitz

+1 (267) 431-2495

eli.gurwitz@eqtpartners.com

1440 Sheffler Drive

Chambersburg, PA

SITE PLAN



Contact Us

Learn more about this property or schedule a tour by reaching out to our local investment and leasing officer.

Eli Gurwitz

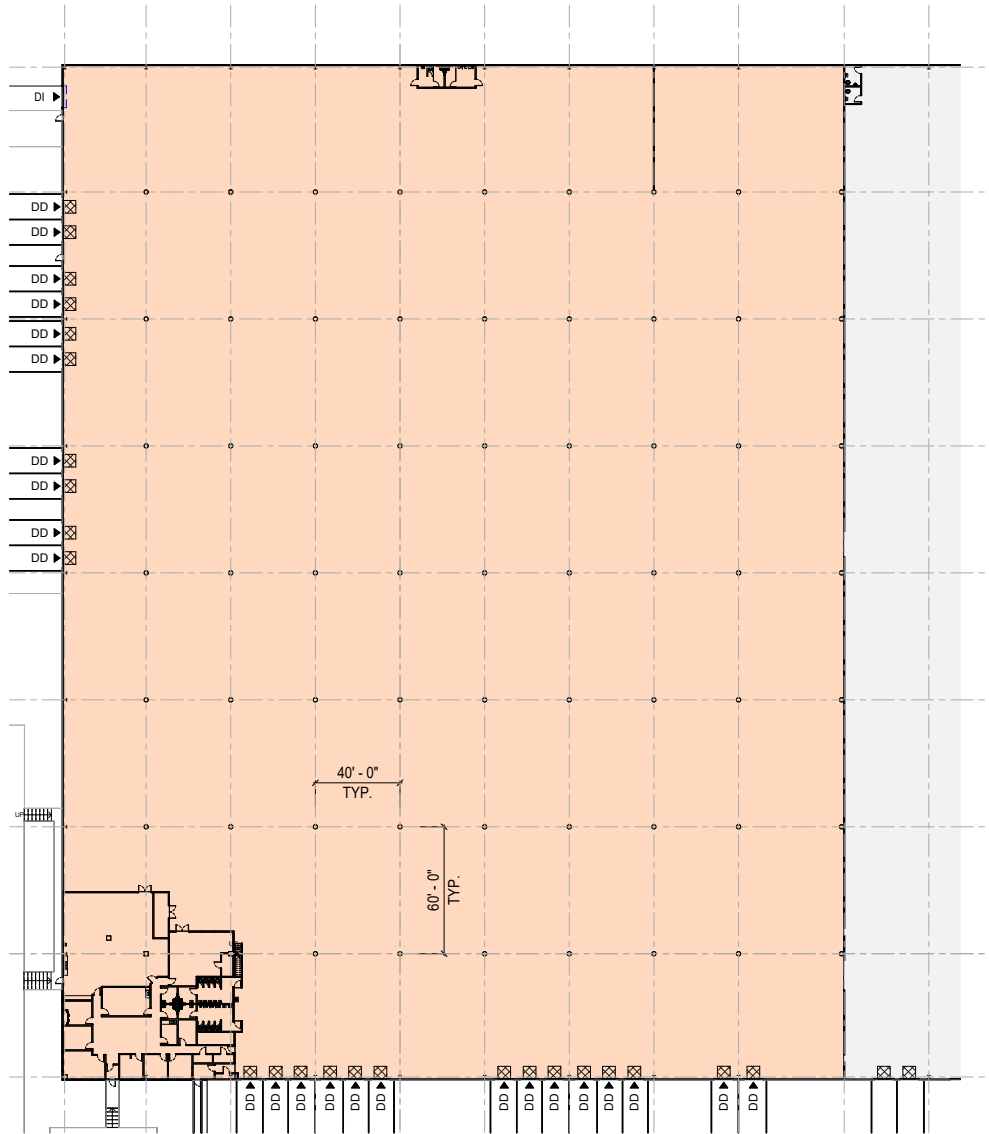
+1 (267) 431-2495

eli.gurwitz@eqtpartners.com

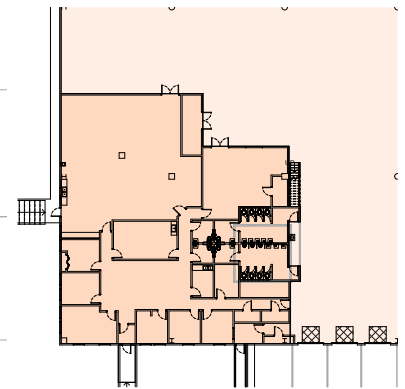
1440 Sheffler Drive

Chambersburg, PA

FLOOR PLAN - 177,600 SF



OFFICE PLAN - 6,456 SF



Contact Us

Learn more about this property or schedule a tour by reaching out to our local investment and leasing officer.

Eli Gurwitz

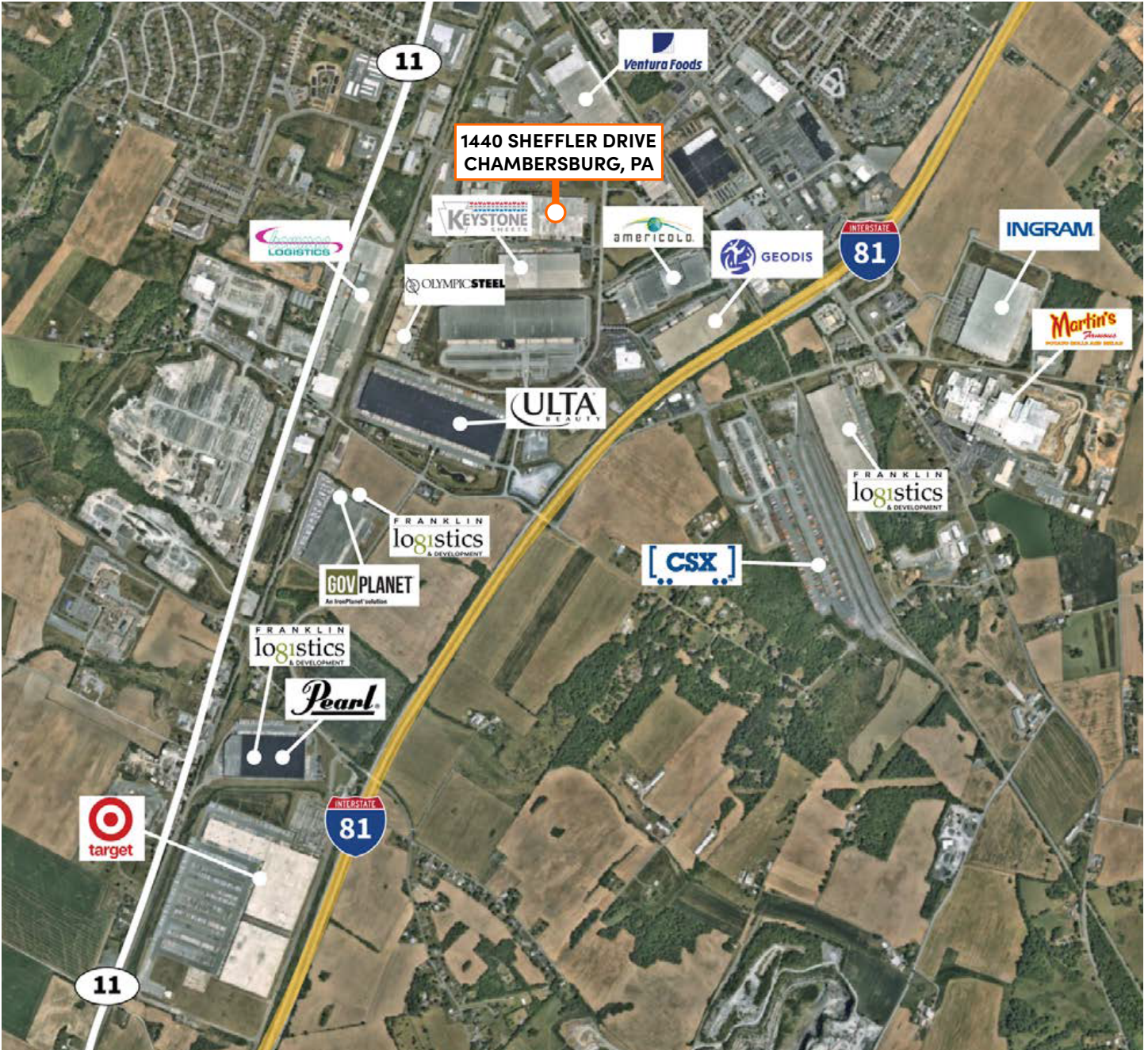
+1 (267) 431-2495

eli.gurwitz@eqtpartners.com

1440 Sheffler Drive

Chambersburg, PA

LOCATION



Contact Us

Learn more about this property or schedule a tour by reaching out to our local investment and leasing officer.

Eli Gurwitz

+1 (267) 431-2495

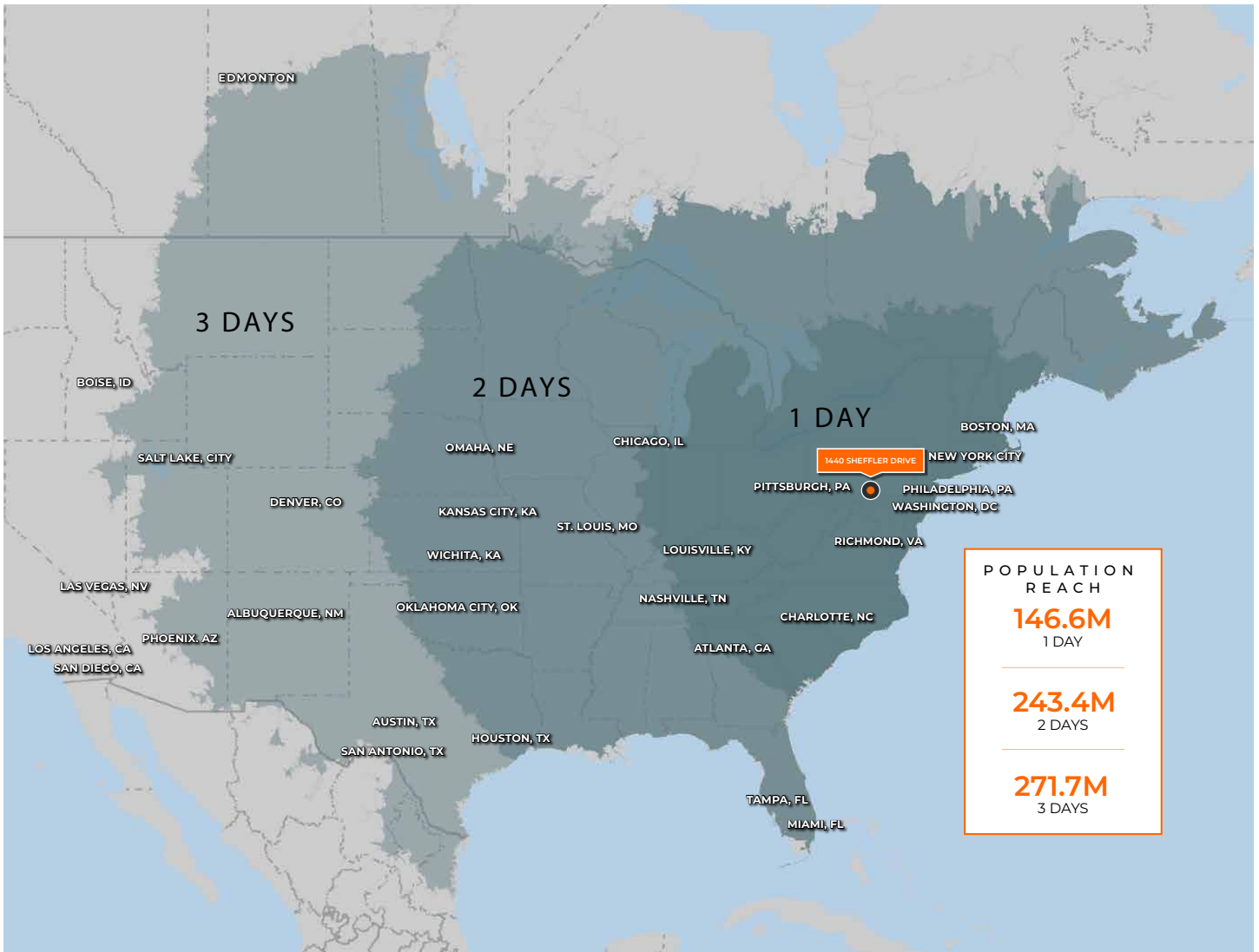
eli.gurwitz@eqtpartners.com

1440 Sheffler Drive

Chambersburg, PA

LOCATION - POPULATION REACH

Access to over 40% of the U.S. population, six of the top ten U.S. MSA's and over 50% of the Canadian population all within a day's drive



Contact Us

Learn more about this property or schedule a tour by reaching out to our local investment and leasing officer.

Eli Gurwitz

+1 (267) 431-2495

eli.gurwitz@eqtpartners.com