

SAINT THOMAS WEST - PLAZA EAST

Suite 601

11,249 SF Available

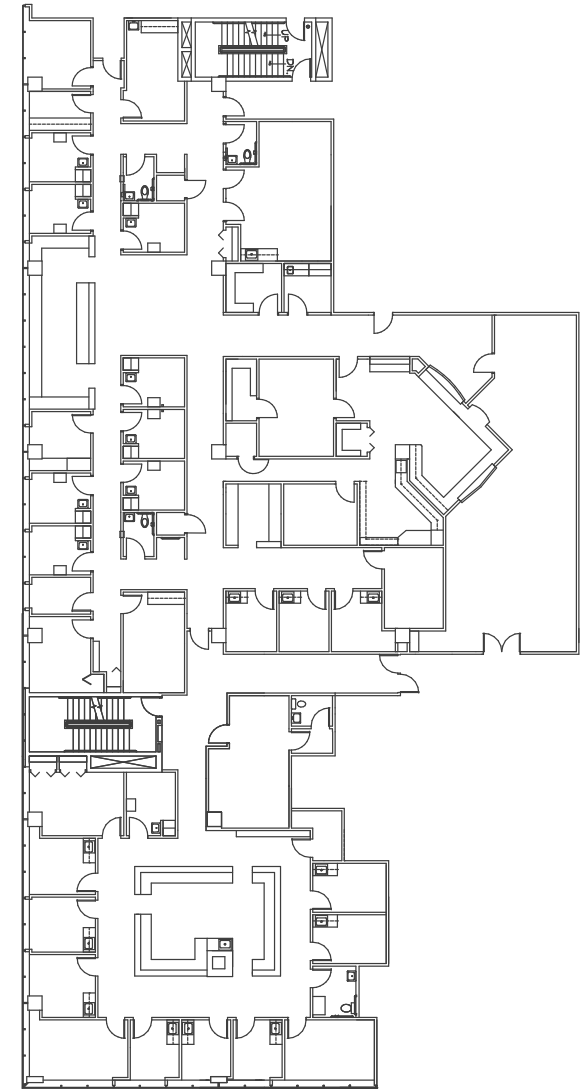
4230 Harding Rd | Nashville, TN | 37205

SUITE 601 HIGHLIGHTS

- Multi-physician suite with excellent views
- Modifiable floorplan adjusts to suit desired practice size
- Inviting reception area
- (23) exam rooms and (5) offices
- (5) private restrooms
- (2) large nurses stations and (2) breakrooms
- Multiple procedure and storage rooms



Scan for virtual tour.



Building owned and managed by
HEALTHCARE REALTY

LEASING INFORMATION

Allen Bolden, CCIM, SIOR
615.693.9034
allen@hbre.com