

Conoley Industrial Park

Wendell, North Carolina

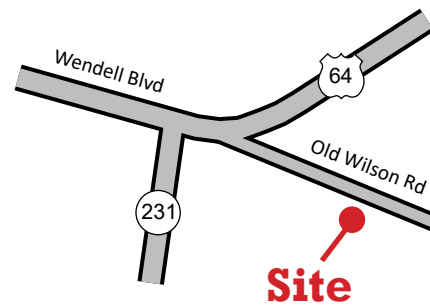
FOR
LEASE



Outstanding Industrial Park Located in Wendell, NC

Features

- Building 466: 5,000 SF
- Great location off Old Wilson Rd near the intersection of Business 64 and Highway 231
- Zoned: Manufacturing & Industrial (M&I)
- Space includes a single office and sales counter
- Two grade level doors
- Contact agent for more details or to schedule a showing



For more information,
please contact:

Jimmy Woody

919.833.2213

*jwoody@
insightpropertygroup.com*

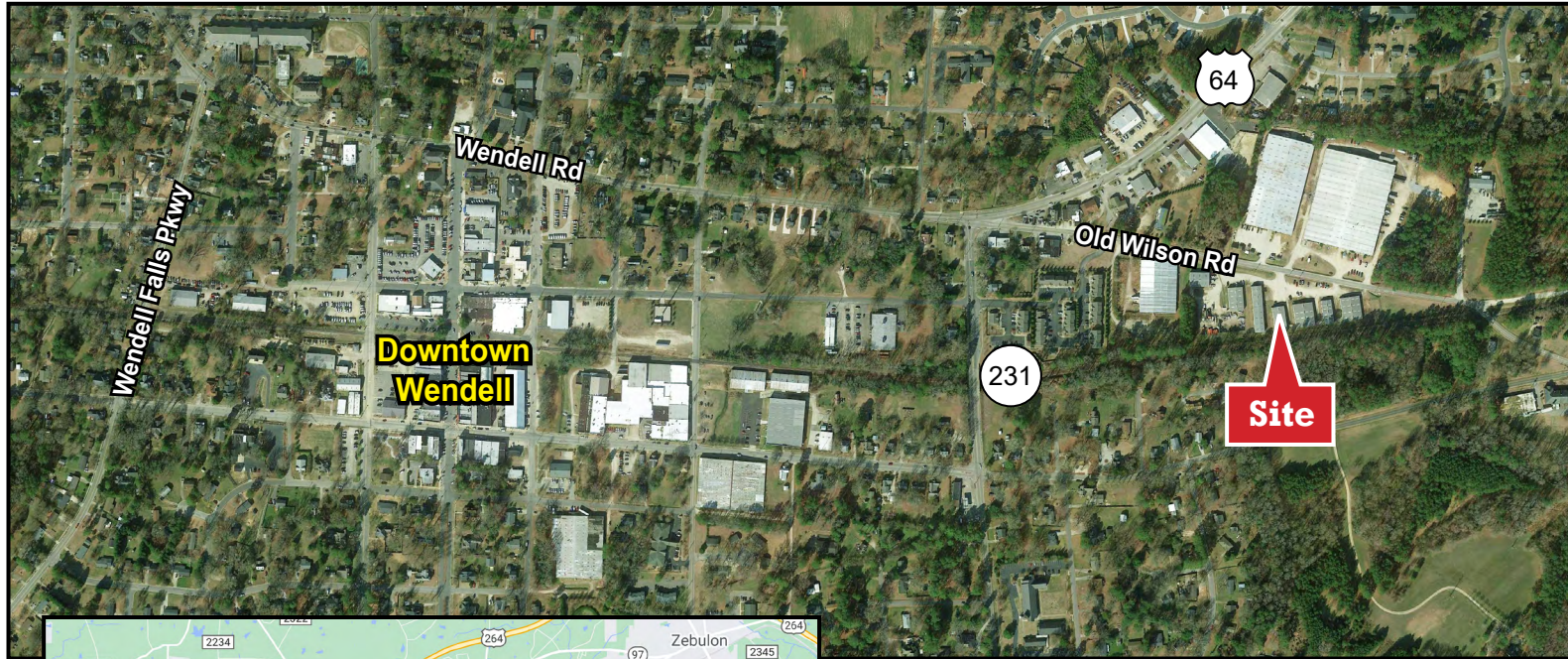
Insight Property Group

209 W. Millbrook Road
Raleigh, NC 27609
919.833.2200

Conoley Industrial Park

Wendell, North Carolina

FOR LEASE



For more information, please contact:

Jimmy Woody • 919.833.2213 • jwoody@insightpropertygroup.com

209 W. Millbrook Road
Raleigh, NC 27609
919.833.2200

Conoley Industrial Park

Wendell, North Carolina

FOR LEASE

Photos Coming...

For more information, please contact:

Jimmy Woody • 919.833.2213 • jwoody@insightpropertygroup.com

209 W. Millbrook Road
Raleigh, NC 27609
919.833.2200

