

GALA
DESIGN STUDIO

2222

WESTHEIMER RD

HOUSTON, TEXAS 77019

10,000 SF Showroom Available in River Oaks



Jones Lang LaSalle Americas, Inc.

PREMIER SHOWROOM SPACE

Available for sale or lease

Discover an exceptional opportunity at 2222 Westheimer Road in Houston's prestigious River Oaks neighborhood. This 10,000 square foot, two-story showroom offers unparalleled visibility along one of the city's most prominent corridors. Available for sale or lease with modern HVAC systems less than two years old, this property provides direct Westheimer access and proximity to The Galleria and Greenway Plaza business districts.



Nineteen (19)

Dedicated parking spots



Prime River Oaks Location –

Westheimer Road frontage with exceptional visibility



Strategic Access –

Minutes from The Galleria and Greenway Plaza business districts



Modern Infrastructure –

HVAC systems less than 2 years old

10,000 SF

Flexible 2-story layout

4,000 SF

First floor

6,000 SF

Second floor

STRATEGIC LOCATION

Strategically positioned in River Oaks, Houston's most regal neighborhood, this property offers unparalleled access to the city's commercial and cultural epicenter. Long synonymous with luxury as the city's first master-planned community, River Oaks attracts Houston's most affluent and socially prominent residents. With immediate proximity to the sophisticated dining and shopping of Upper Kirby and the corporate landscape of Greenway Plaza, this prime location within the 610 Loop places your business at the crossroads of established prestige, dynamic commerce, and Houston's most distinguished demographics.




3 MILE DEMOGRAPHICS:

 **212,164**
POPULATION

 **553,722**
DAYTIME POPULATION

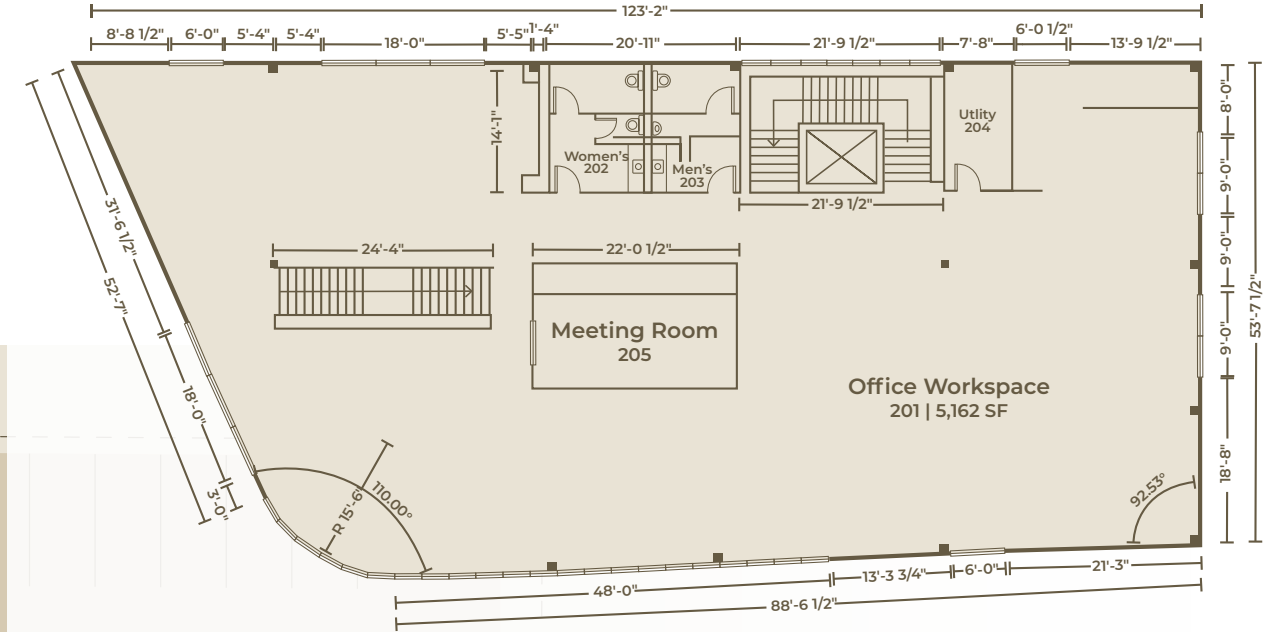
 **1.19%**
ANNUAL GROWTH

 **115,892**
HOUSEHOLDS

 **\$188,312**
AVG. HH INCOMES

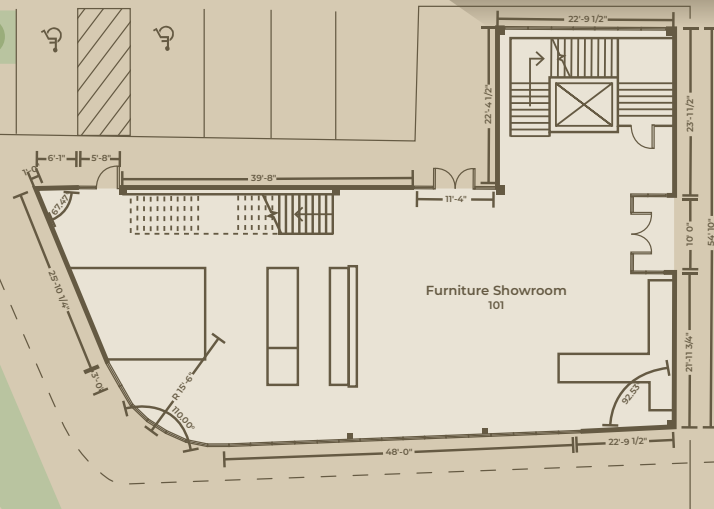
 **92.5%**
COLLEGE EDUCATED

YOUR SPACE Awaits



19 Dedicated Parking Spaces

WESTGATE DR



WESTHEIMER ROAD





JOIN AREA RETAILERS

RIVER OAKS DISTRICT
(2.3 MILES WEST OF SITE)

RIVER OAKS SHOPPING CENTRE
(0.7 MILES NORTHEAST OF SITE)

MONTROSE COLLECTIVE
(1.46 MILES EAST OF SITE)

2222
WESTHEIMER RD



TOOTSIES
milk + honey

Eddie's
PONDICHER

ChopShop

ULTA

MIA'S
MILK

30,200 CPD

21,300 CPD

19,700 CPD

HIGHLAND VILLAGE
(1.9 MILES WEST OF SITE)

BONOBOS **WARBY PARKER**
eyewear

Crate&Barrel **YETI** **Apple Store**

lululemon **athletica** **ANTHROPOLOGIE**

POTTERY BARN **PETER MILLAR** **WILLIAMS SONOMA**

Mercedes-Benz
GREENWAY PLAZA

LA FITNESS

288



2222
WESTHEIMER RD

RIVER OAKS | HOUSTON, TX

Meredith Bretting
Senior Associate
+1 713 425 1850
meredith.bretting@jll.com

Mark Raines
Managing Director
+1 713 888 4037
mark.raines@jll.com



Although information has been obtained from sources deemed reliable, neither Owner nor JLL makes any guarantees, warranties or representations, express or implied, as to the completeness or accuracy as to the information contained herein. Any projections, opinions, assumptions or estimates used are for example only. There may be differences between projected and actual results, and those differences may be material. The Property may be withdrawn without notice. Neither Owner nor JLL accepts any liability for any loss or damage suffered by any party resulting from reliance on this information. If the recipient of this information has signed a confidentiality agreement regarding this matter, this information is subject to the terms of that agreement. ©2026. Jones Lang LaSalle IP, Inc. All rights reserved.