

# Office ★ LEASE

LanCarte.com

4775 BRYANT IRVIN COURT RD, FORT WORTH, TX 76107



Sarah LanCarte  
CCIM, SIOR  
817-228-4247  
sarah@lancarte.com

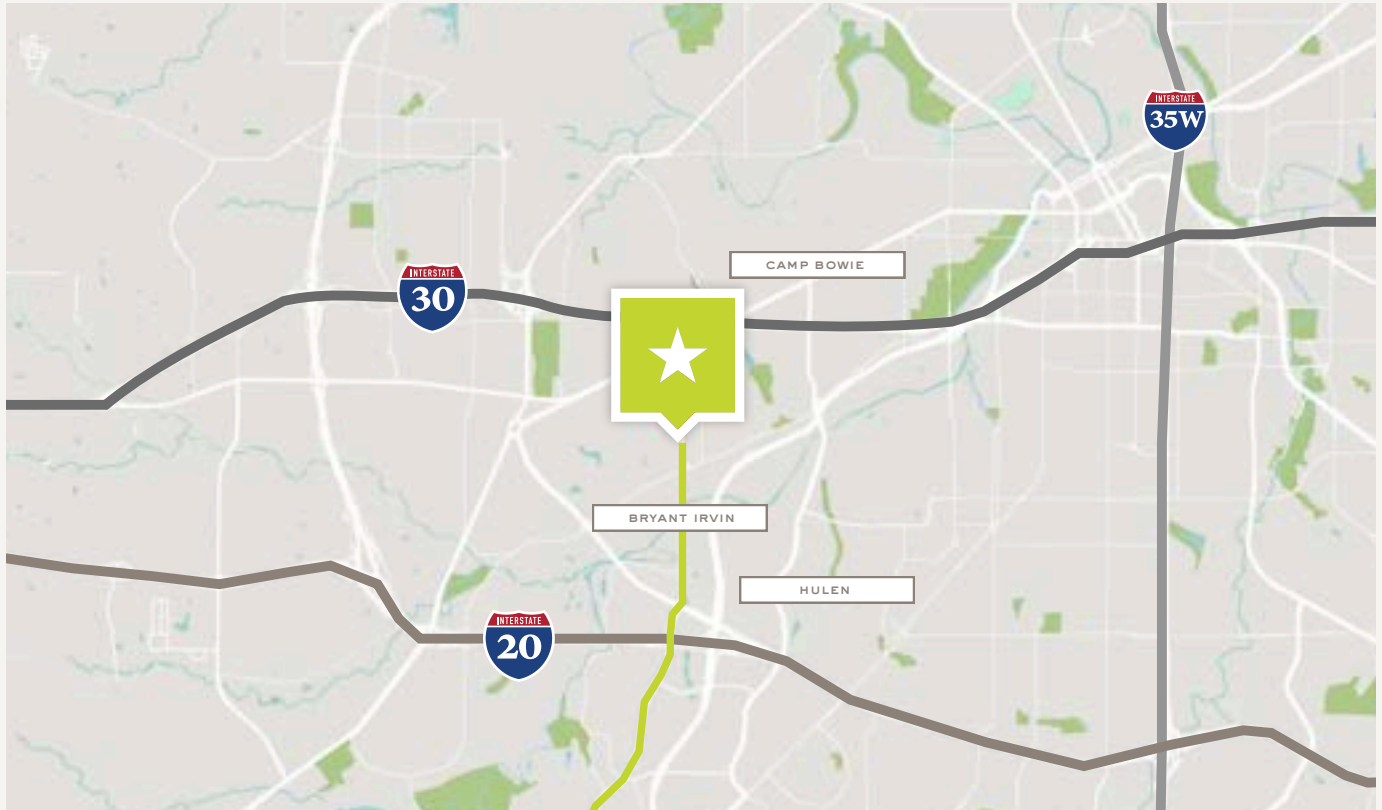
Finn Wilson  
817-713-8771  
fwilson@lancarte.com

Riley Dean  
817-992-2362  
rdeann@lancarte.com

# Office ★ LEASE

4775 BRYANT IRVIN COURT

LanCarte.com



## PROPERTY FEATURES

- Estimated delivery in Q2 2027
- Suite can be divided
- Under Construction/Class A Building
- Building Size: 10,000 SF

## AVAILABLE SPACES

SUITE 100    **2,000-4,348 SF**

## LOCATION OVERVIEW

Located in an established professional corridor in Southwest Fort Worth, the property offers convenient access to Chisholm Trail Parkway, Bryant Irvin Road, and US-183. With traffic counts exceeding 20,000 vehicles per day along Bryant Irvin Road, the site provides strong visibility, regional connectivity, and proximity to nearby retail, dining, and residential neighborhoods.

## LEASING STRUCTURE

## CONTACT BROKER

# Office ★ LEASE

4775 BRYANT IRVIN COURT

LanCarte.com

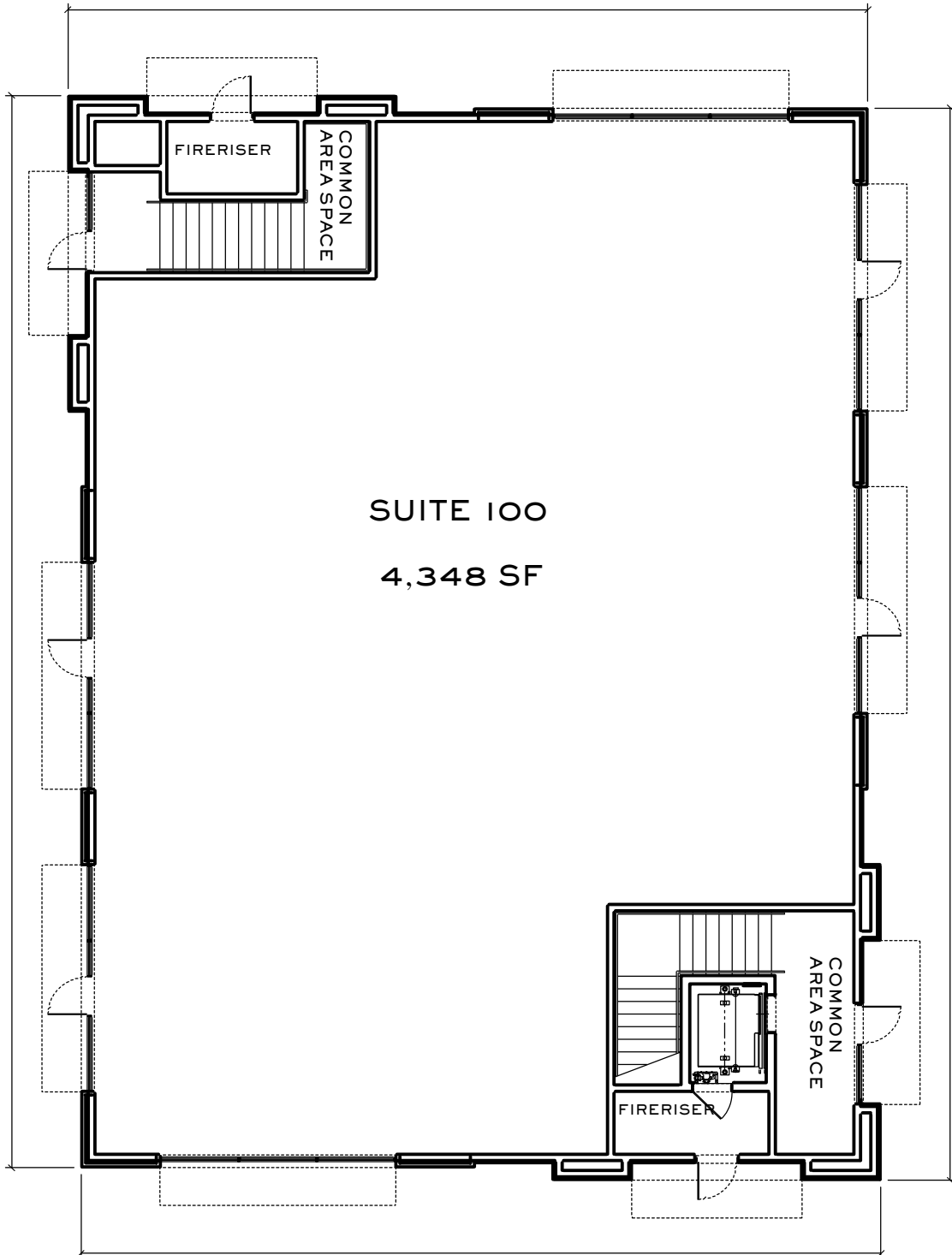
## RENDERING & SITE PLAN



Office ★ LEASE  
4775 BRYANT IRVIN COURT

LanCarte.com

FLOOR PLAN



**Office ★ LEASE**  
4775 BRYANT IRVIN COURT

LanCarte.com

**EXTERIOR**





LANCARTE  
COMMERCIAL  
BROKERAGE ★ PROPERTY MANAGEMENT

*Relentlessly Pursuing What Matters*

Sarah LanCarte  
CCIM, SIOR  
817-228-4247  
sarah@lancarte.com

Finn Wilson  
817-713-8771  
fwilson@lancarte.com

Riley Dean  
817-992-2362  
rdeann@lancarte.com

The information provided herein was obtained from sources believed to be reliable. However, LanCarte Commercial makes no guaranties, warranties or representations as to the completeness or accuracy thereof. The presentation of this property is submitted subject to errors, omissions, change of price or conditions, prior to sale or lease, or withdrawal without notice. Copyright 2026 LanCarte Commercial Real Estate, LLC.