

109 - 111 South Orange Avenue, South Orange NJ

SHANE WIERKS
swierks@jefferyrealty.com
C: 908.581.7781
O: 908.668.9600 EXT. 223

For Lease | 2,346 SF & 1,162 SF Ground Floor

For Lease | 565 SF & 700 SF 3rd Floor Units



For Lease | 2,346 SF & 1,162 SF Ground Floor
109 - 111 South Orange Avenue, South Orange NJ



AVAILABLE

2,346 SF* & 1,162 SF Ground Floor
 *Full Usable Basement
 565 SF & 700 SF 3rd Floor Units

FRONTAGE

75" On South Orange Ave

NOTES

- Downtown South Orange
- 1 Block from South Orange Station

PRICE

Call for Quote

TAXES

\$86,196.70
 Tenant Shall Pay 25% of
 Property Taxes & Insurance

PARKING

- Street Parking
- Public Parking Lot

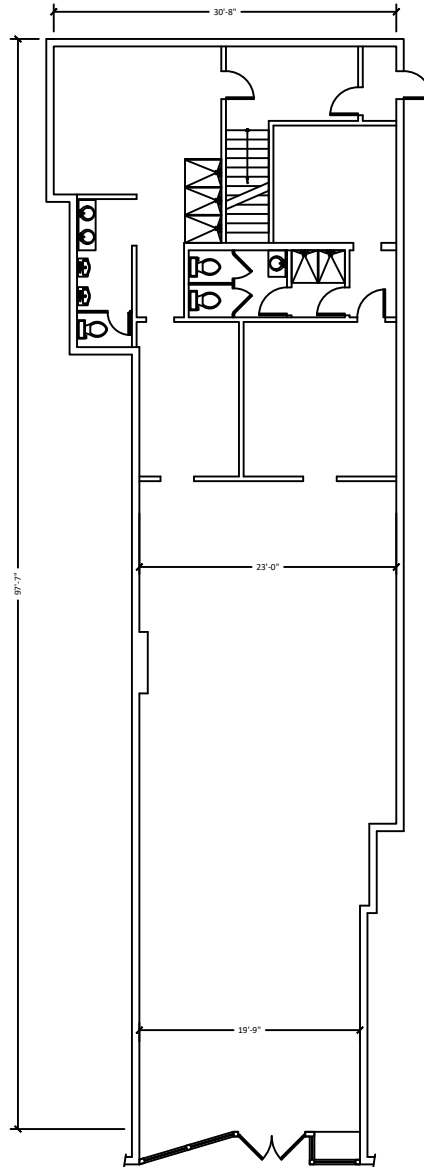
TRAFFIC

730 VPD on Village Plaza
 8,995 VPD on Route 510
 9,381 VPD on Valley Street

NEIGHBORING RETAIL



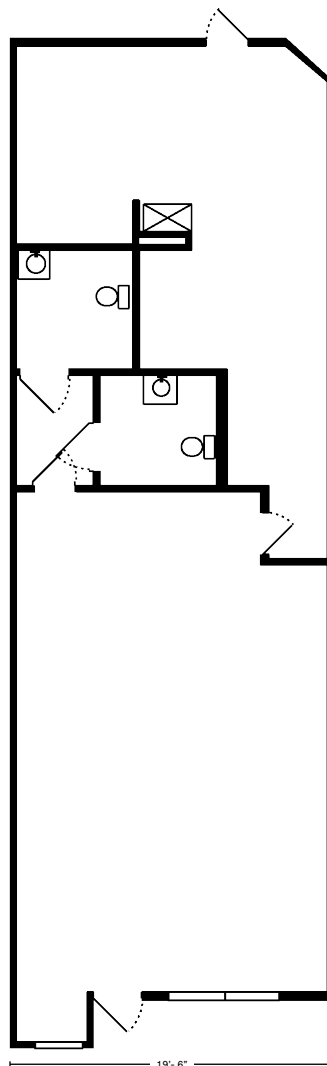
For Lease | 2,346 SF w/ Full Usable Basement 109 South Orange Avenue, South Orange NJ



For Lease | 1,162 SF

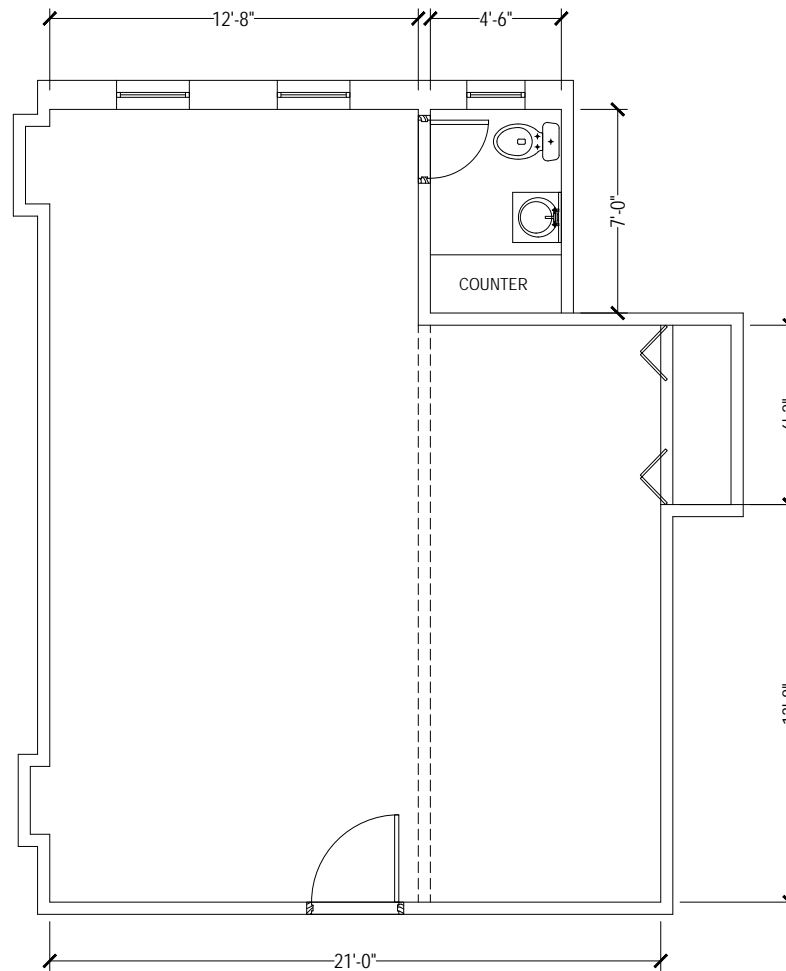
111 South Orange Avenue, South Orange NJ

FLOOR PLAN



For Lease | 565 SF

111 South Orange Avenue, South Orange NJ

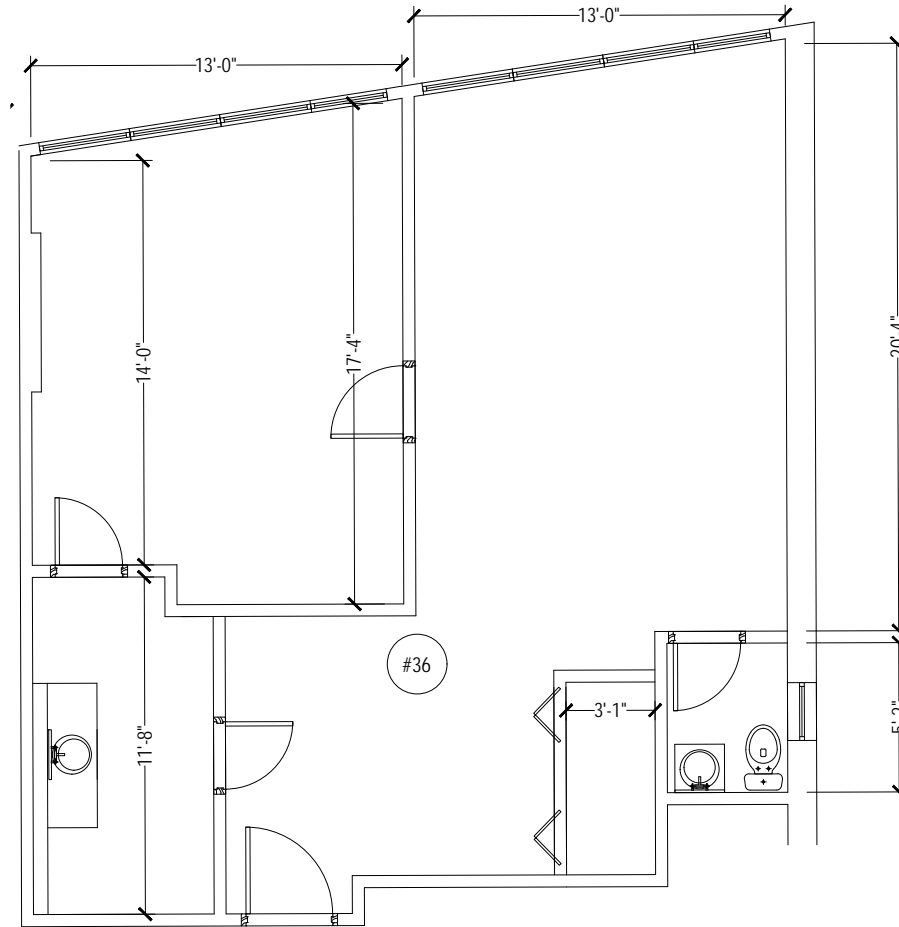


SUITE #35

SCALE 1/4" = 1'-0"

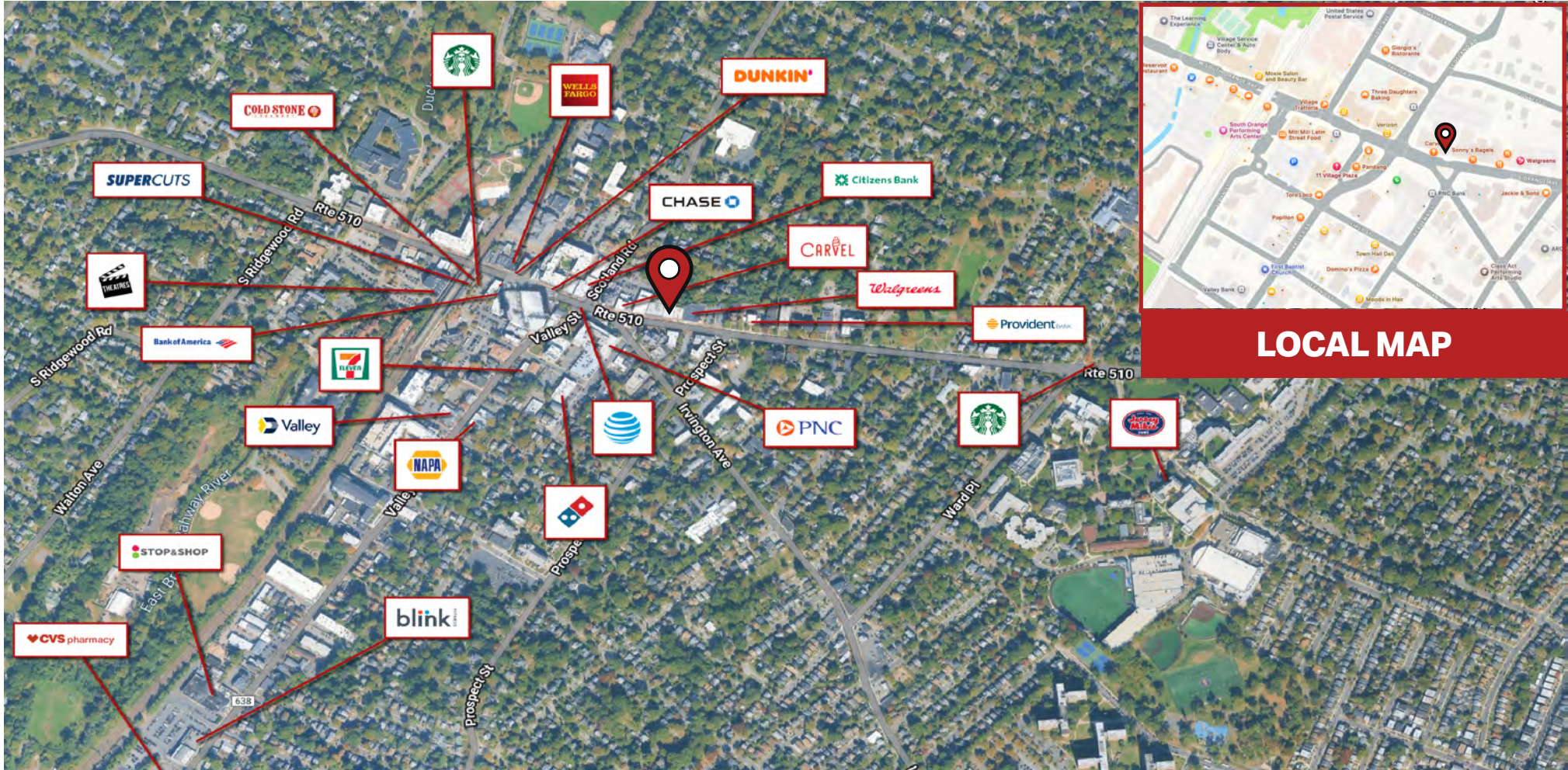
For Lease | 700 SF

111 South Orange Avenue, South Orange NJ



SUITE #36

SCALE 1/4" = 1'-0"



DEMOGRAPHICS

	TOTAL POPULATION	AVERAGE HHI	HOUSEHOLDS	TOTAL BUSINESSES	TOTAL EMPLOYEES
1 Mile	28,448	\$206,814	10,033	984	7,521
3 Miles	296,832	\$128,576	109,187	9,536	70,195
5 Miles	706,399	\$128,197	259,683	25,619	230,925

