

# 801

BLANCHARD

SEATTLE | WA

3,565 RSF

Penthouse  
office space  
for lease





## BUILDING OVERVIEW

801 Blanchard offers an iconic fusion of brick and timber, expertly redeveloped by Sugar Mountain in collaboration with Mallet Design Build.

Constructed in 2015, 801 Blanchard was fully rebuilt with an eye on keeping its automotive heritage and focusing on its unique floor plates and industrial design. Large perimeter windows promote unparalleled natural light and views up and down Westlake Avenue. Anchored by the award-winning Butcher's Table, and located on the SLU Street Car route, the building offers direct access to top retail and amenities, elevating the work-life experience.

## ICONIC SPACE

Airy, modern top floor office space built out with a perfect blend of rustic features and industrial design elements.



Modern design  
w/ rustic elements



Natural light from  
large perimeter windows



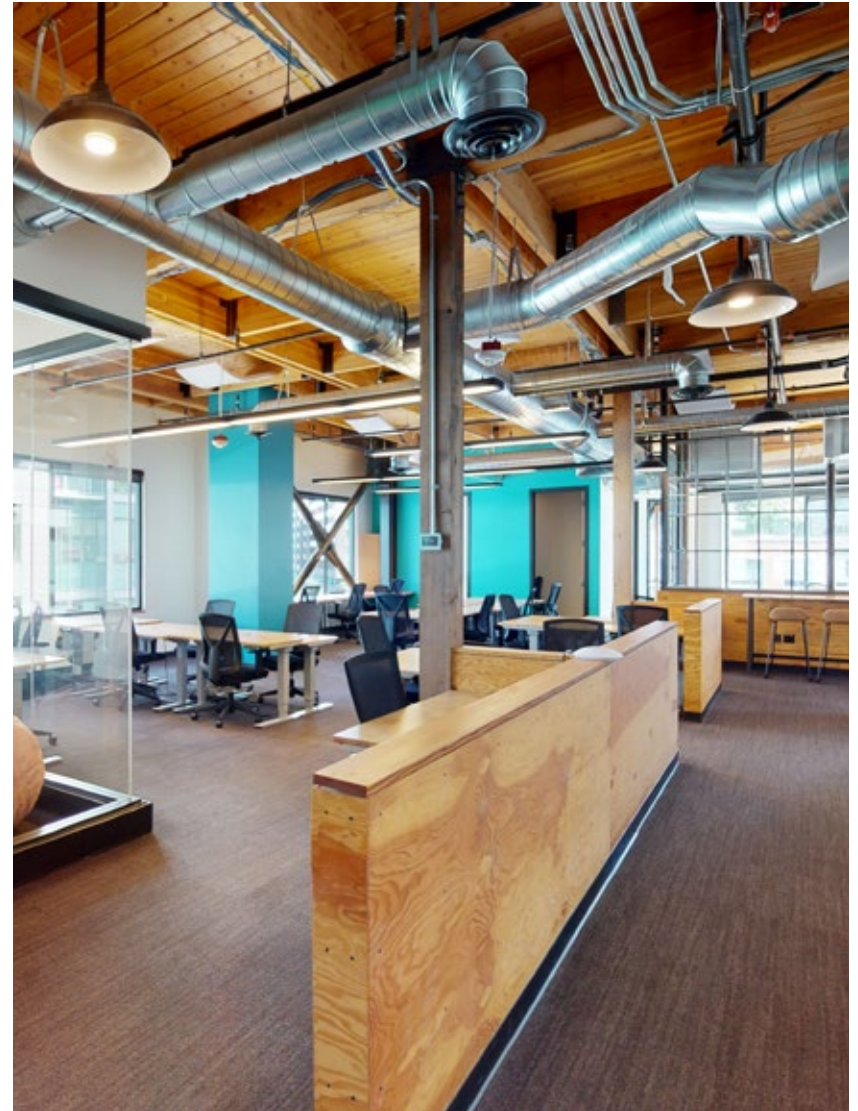
High ceilings w/ exposed wood  
beams and original brick



Prime proximity to  
SLU top amenities

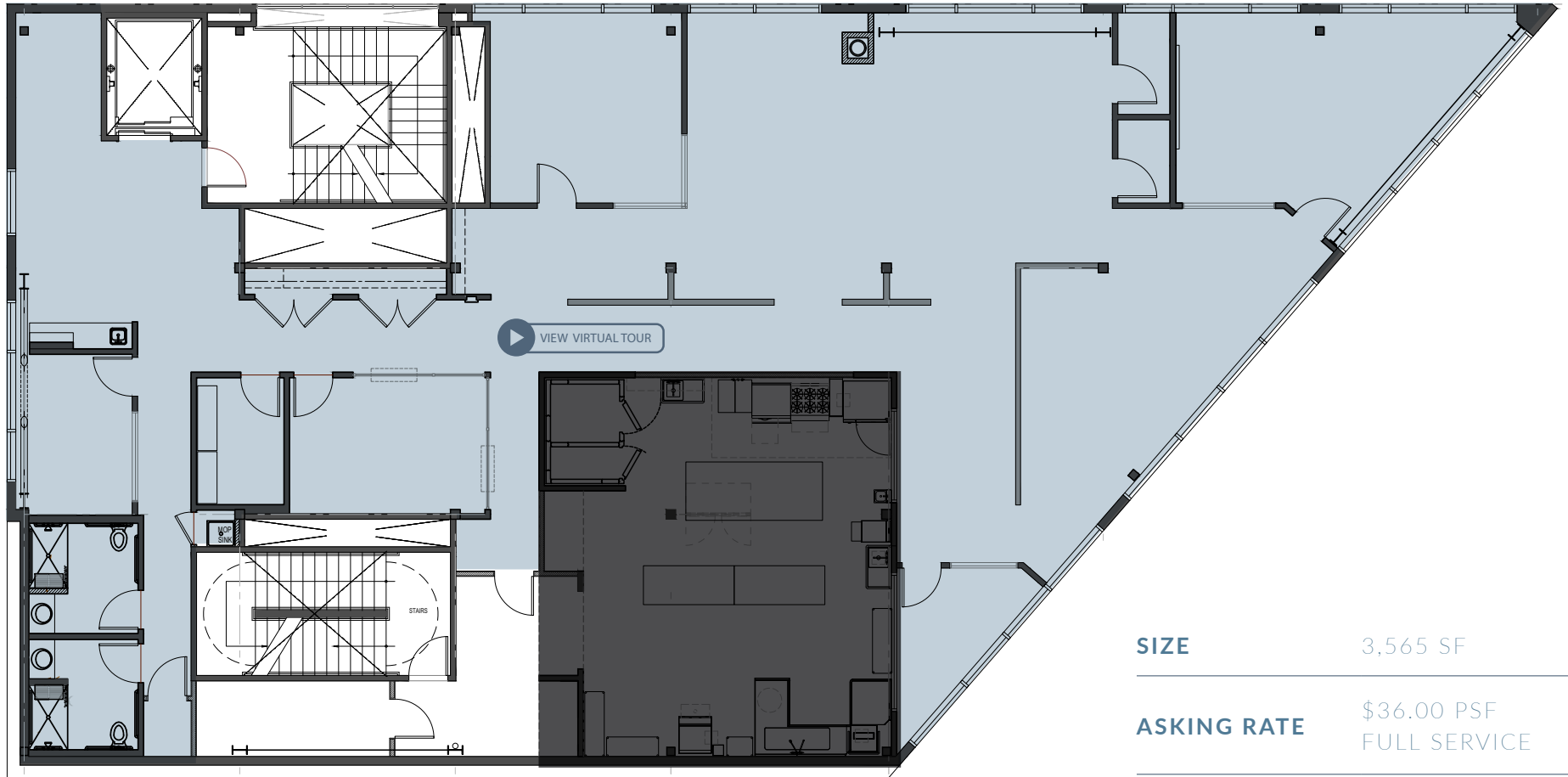


Easy access to  
I-5 and SLU Street Car

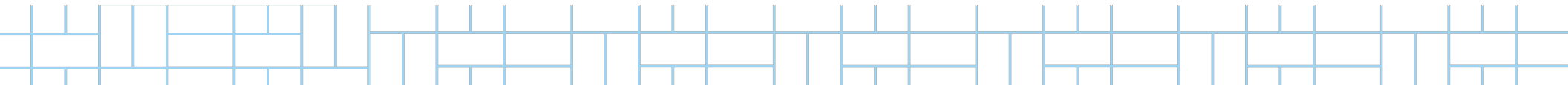


FLOOR PLAN

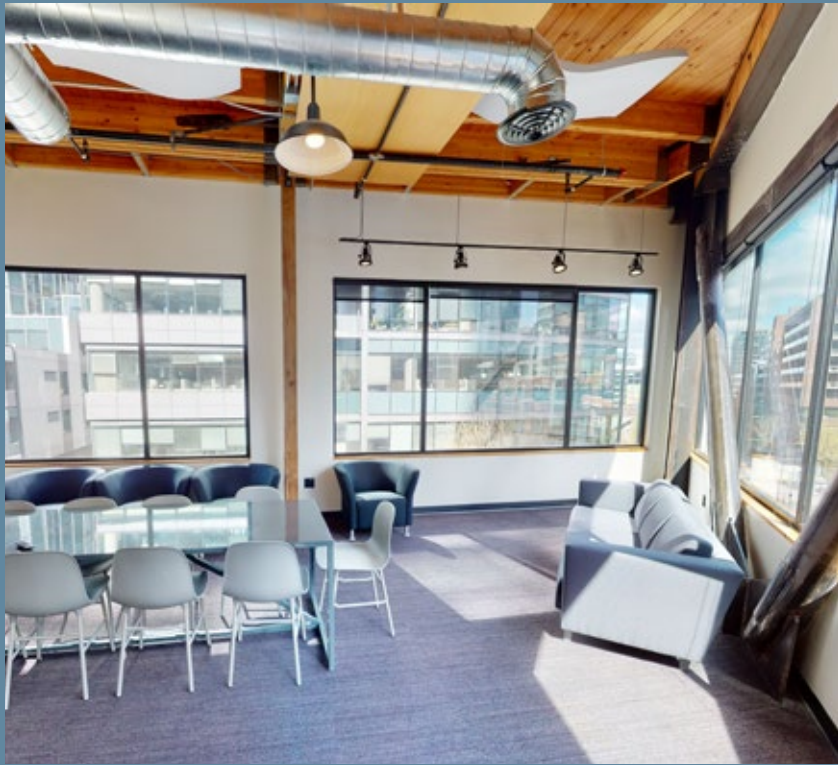
# Floor 4



<b>SIZE</b>	3,565 SF
<b>ASKING RATE</b>	\$36.00 PSF FULL SERVICE
<b>ALLOWANCE</b>	NEGOTIABLE
<b>AVAILABILITY</b>	AVAILABLE NOW



MODERN DESIGN



## PERFECT LOCATION



DRIVE TIME	3 MIN	5 MIN	10 MIN
POPULATION	15,352	44,422	195,106
DAYTIME POPULATION	21,503	67,934	405,392
AVG. HH INCOME	\$211,657	\$183,945	\$169,202
MEDIAN AGE	32.9	33.1	33.8



## NEARBY AMENITIES


Centered between SLU and the Seattle CBD, 801 Blanchard offers easy access to diverse dining, shopping and entertainment options.




**801**  
BLANCHARD

- FLATSTICK PUB
- STARBUCKS
- THE COLLECTIVE
- REPUBLIC
- BOCZ SALON
- PLANTIFUL
- GOLD BAR
- BANYA 5
- WEST ELM
- EINSTEIN BAGELS
- ANN SACKS
- SHAKE SHACK
- JOE & THE JUICE
- LADY YUM
- 2120
- THE SPHERES
- VICTOR TAVERN
- RUBENSTEIN BAGELS
- PALACE KITCHEN
- DAHLIA BAKERY
- WESTLAKE CENTER
- MODERN DERMATOLOGY
- TOP POT DOUGHNUTS
- BA BAR
- LOCAL
- PORTAGE BAY CAFE
- CACTUS
- FLOW FITNESS
- CHIPOTLE
- DENTOLOGIE
- BARRY'S BOOTCAMP
- WHOLE FOODS
- THE BUTCHER'S TABLE
- VINASON
- MONORAIL
- MENDOCINO FARMS
- SOUL CYCLE
- SWEETGREEN
- AMAZON GO
- SEPHORA
- EVERGREENS
- SKILLET
- MAMNOONCITA
- MARINATION
- BAROLO
- PIKE TAPROOM
- BOMBO
- PACIFIC PLACE
- NORDSTROM
- DOUGHZONE

 WALK SCORE  
**100**

 TRANSIT SCORE  
**100**

 BIKE SCORE  
**80**

# 801

**BLANCHARD**

SEATTLE | WA

## LEASING CONTACTS

**ANNE MARIE KOEHLER**  
206-487-5167  
annemarie.koehler@nmrk.com

**ERIKA KOEHLER**  
206-487-5168  
erika.koehler@nmrk.com



**NEWMARK**

NEWMARK | 1420 5th Avenue, Suite 2600, Seattle | [www.nmrk.com](http://www.nmrk.com) | The distributor of this communication is performing acts for which a real estate license is required. The information contained herein has been obtained from sources deemed reliable but has not been verified and no guarantee, warranty or representation, either express or implied, is made with respect to such information. Terms of sale or lease and availability are subject to change or withdrawal without notice.