



INTERSTATE 75
AADT 129,200±

TREELINE AVE. S. - AADT 25,000±

ROCKSTAR HARLEY-DAVIDSON
PORSCHE FORT MYERS

Audi FORT MYERS

CVS pharmacy

Mobil

INTERSTATE 75

Somerset
AUTOMOTIVE SALES NETWORK INC.

RIVERCHASE DERMATOLOGY

DANIELS PKWY. - AADT 42,500±

SADDLE ROAD

GHANA CIR.

LSI
COMPANIES

OFFERING MEMORANDUM
PINNACLE CENTER 22
MIXED-USE DEVELOPMENT OPPORTUNITY - FORT MYERS, FL

PROPERTY SUMMARY

Property Address: 13251 Saddle Road
Fort Myers, FL 33913

County: Lee

Property Size: 22.29± Acres

Zoning: Commercial Tourism (CT) - 14.75± Acres
Agricultural 2 (AG-2) - 7.54± Acres

Future Land Use: Tradeport (Lee County)

Utilities: Water, sewer, electric in
close proximity

Parcel IDs: 23452501000270000;
23452501000370000;
23452501000360000;
23452501000290000;
23452500000060050

Tax Information: \$1,639.99 (2025)

LIST PRICE:

\$13,500,000

LSI
COMPANIES
LSICOMPANIES.COM

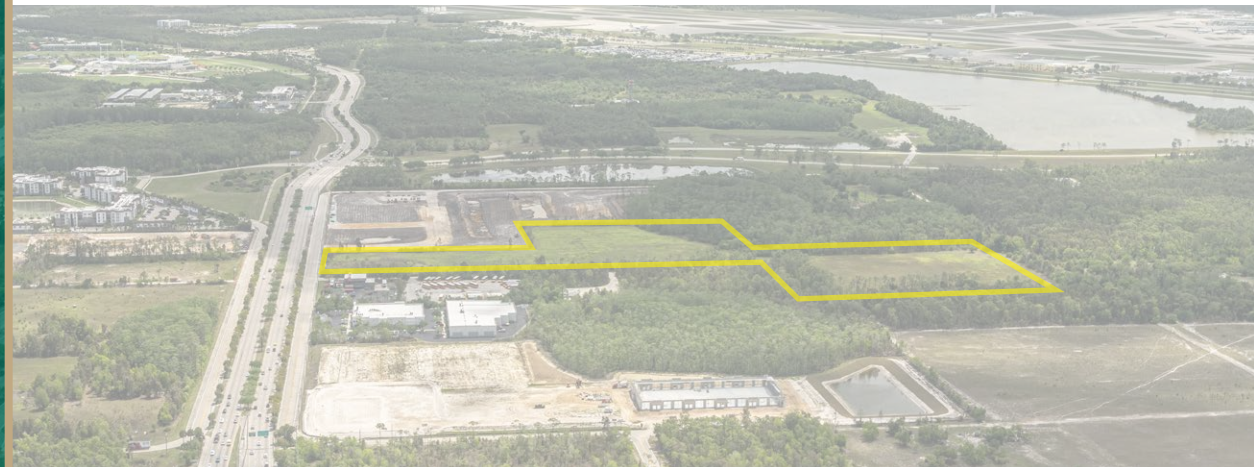
SALES EXECUTIVES



Justin Thibaut, CCIM
President & CEO



Christi Pritchett, CCIM
Senior Broker Associate



DIRECT ALL OFFERS TO:

Christi Pritchett, CCIM

cpritchett@lsicompanies.com

o: (239) 489-4066 m: (239) 728-1720

OFFERING PROCESS

Offers should be sent via Contract or Letter of Intent to include, but not limited to, basic terms such as purchase price, earnest money deposit, feasibility period and closing period.

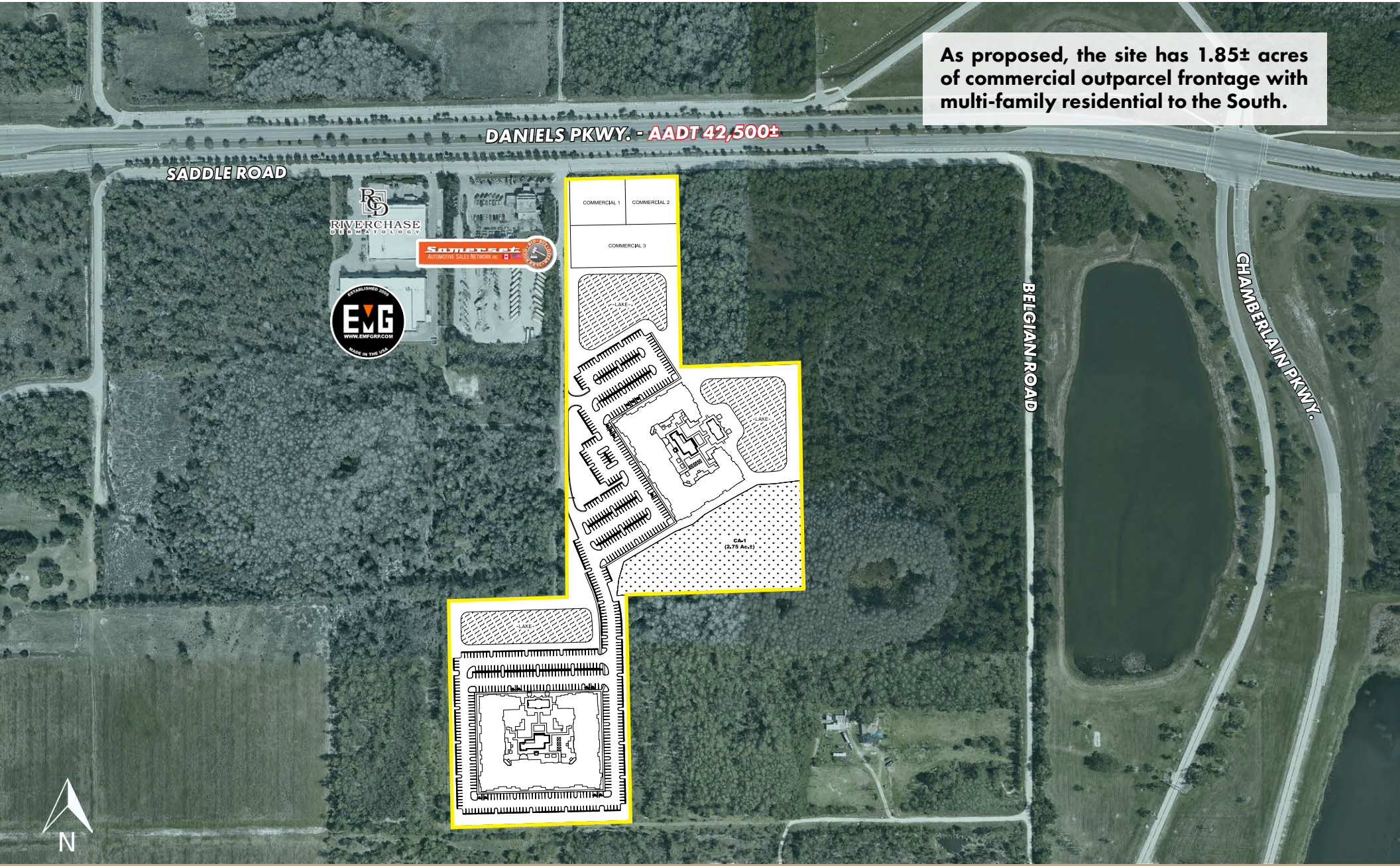
THE OPPORTUNITY

- Highly visible 22± acre development site in the highly populated growth corridor near I-75 and SWFL International Airport
- The front 14.75± acres of the site is zoned Commercial Tourist, which allows for a variety of uses including: hotel, ALF, storage, commercial/retail, medical office, general office, and others (strong potential for industrial with a rezoning). The rear 7.54± acres is zoned AG-2 and will require a rezone as appropriate
- Under the Live Local Act, opportunity for multi-family development of 14 units/acre, a total of 206 units on the front 14.75 acres. The rear parcel is zoned AG-2 and does not qualify for Live Local without a rezoning
- Rental rates from other projects in the area demonstrate feasibility for a Live Local project in this location
- Plans for the site contiguous reroute Saddle Road with a connection to Daniels Parkway
- The Tradeport Future Land Use designation encourages uses such as light manufacturing, distribution, warehousing, laboratories or airport-related transportation activities, hotel, motel and others



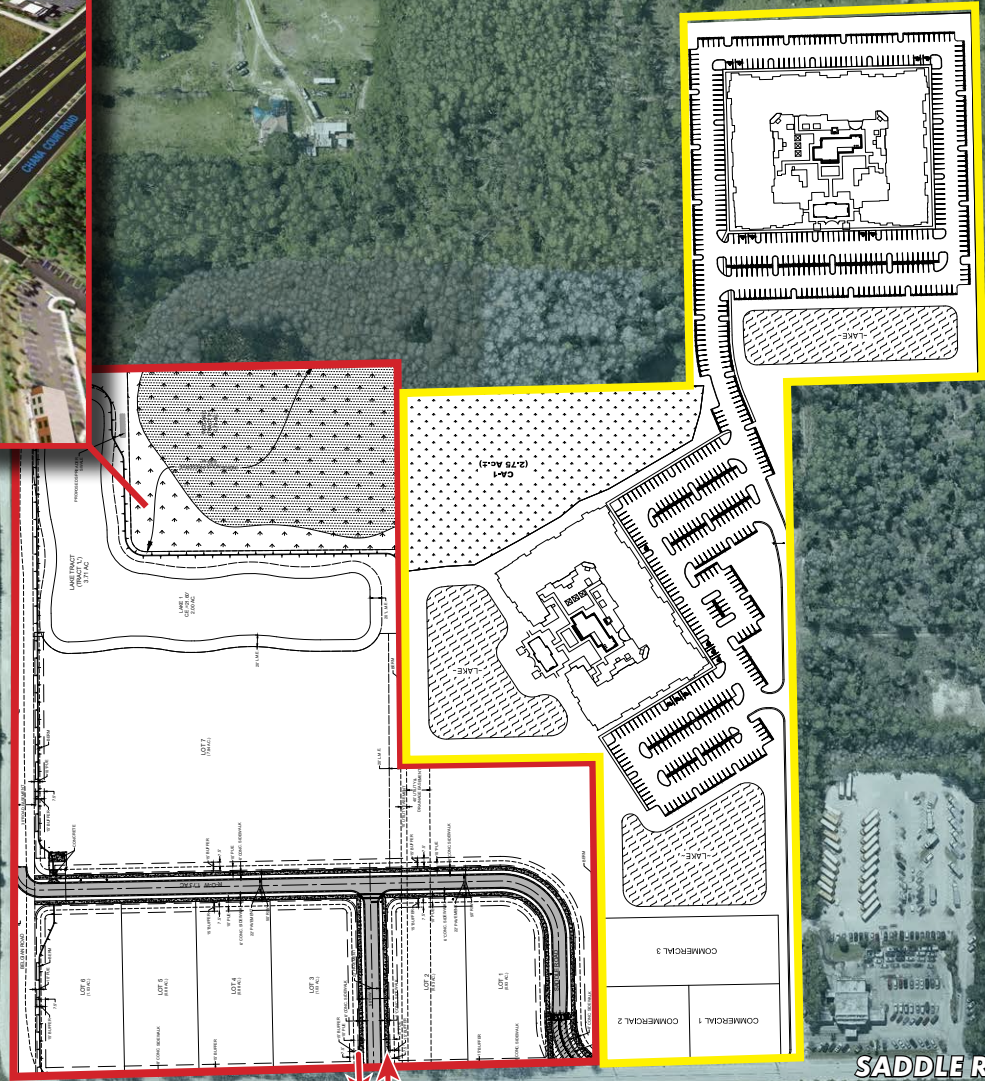
MIXED USE PLAN - OVERLAY

As proposed, the site has 1.85± acres of commercial outparcel frontage with multi-family residential to the South.



CONNECTION PLAN

ADJACENT PROPERTY



Plans for the site contiguous reroute Saddle Road south with a planned connection to Daniels Parkway.

DANIELS PKWY. - AADT 42,500±

SADDLE ROAD





gulf coast
TOWN CENTER



TREELINE AVE. S. - AADT 25,000±



INTERSTATE
75
AADT 129,200±

ZONED AG-2
7.54± ACRES

ZONED CT
14.75± ACRES



SADDLE ROAD

DANIELS PKWY. - AADT 42,500±

LEGACY | GATEWAY
APARTMENTS



PROPERTY AERIAL



NEARBY DEVELOPMENT MAP

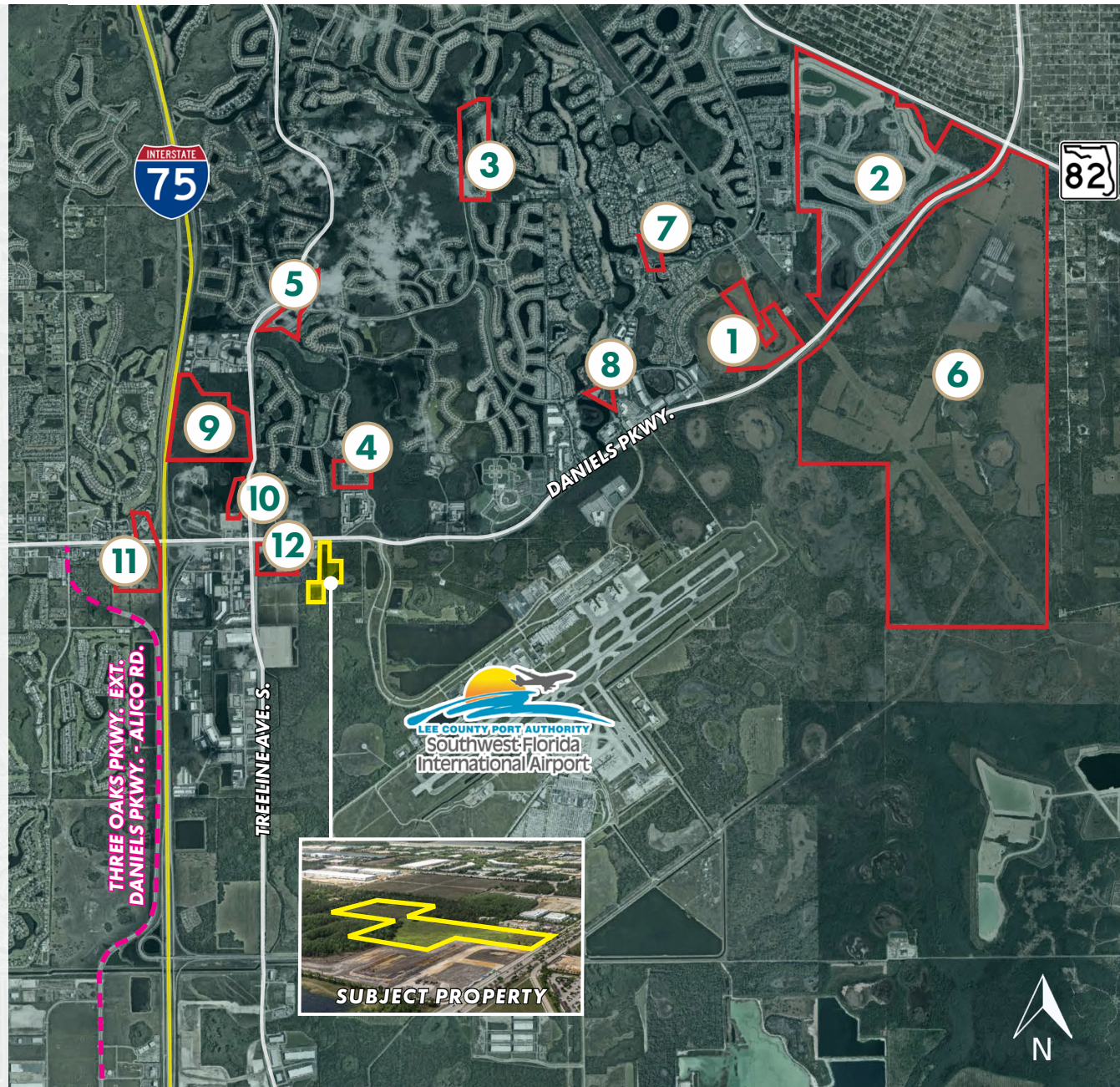
RESIDENTIAL

UNDER CONSTRUCTION

- 1 DANIELS APARTMENTS**
576 Multi-Family Units
- 2 TIMBER CREEK**
1,315 Single Family
250,000 Sq. Ft. of Commercial
- 3 ARBORWOOD PRESERVE (PHASE 3)**
143 Single-Family Units
- 4 PARKWAY PRESERVE**
123 Townhomes
- 5 TOWN PLANTATION**
396 Multi-Family Units

IN PLANNING

- 6 DANIELS CREEK**
1,600 Residential Units
350,000 Sq. Ft. of Commercial
- 7 CAYO PELON**
220 Multi-Family Units
- 8 GATEWAY SENTOSA APARTMENTS**
256 Multi-Family Units
- 9 TREELINE 115**
376 Single-Family and Multi-Family Community
- 10 TREELINE AVENUE 153**
153 Multi-Family Units
- 11 DANIELS TOWN SQUARE**
1,590 Residential Units
- 12 SADDLE ROAD INDUSTRIAL**
18.33± Acre Flex Industrial Project



NEARBY DEVELOPMENT MAP COMMERCIAL & INDUSTRIAL

COMPLETED DEVELOPMENTS

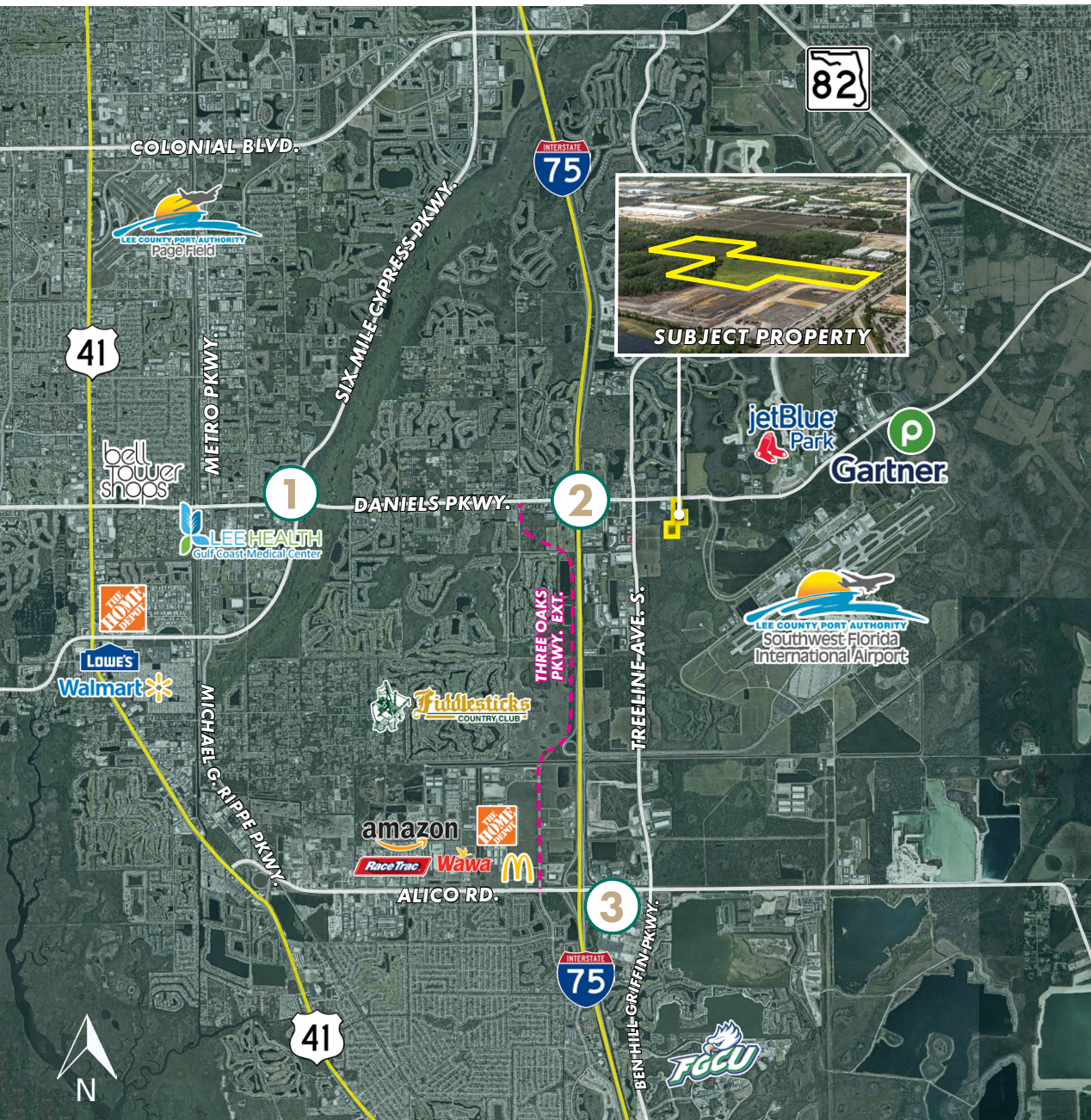
- 1 INTELLIFLEX BUSINESS PARK**
370,000 Sq. Ft. of Commercial & Industrial
- 2 EASTLINKS BUSINESS PARK**
482,329 Sq. Ft. of Office & Industrial
- 3 WESTLINKS BUSINESS PARK**
Office & Industrial

DEVELOPMENTS UNDERWAY

- 4 ALESSIO AIR COMMERCE PARK**
100,000 Sq. Ft. of Industrial/Manufacturing
30,000 Sq. Ft. of Commercial
- 5 7-ELEVEN GAS STATION**
- 6 TREELINE ASSEMBLAGE COMMERCE PARK**
361,200 Sq. Ft. of Commercial & Light Industrial
- 7 DANIELS/I-75 COMMERCE CENTER MPD**
861,160 Sq. Ft. of Commercial & Mixed Use
- 8 JETPORT INTERSTATE COMMERCE PARK**
1,399,989 Sq. Ft. of Commercial & Industrial
- 9 TERMINAL ACCESS PARK**
2,400,000 Sq. Ft. of Industrial & Mixed Use



RETAIL MAP



1. DANIELS CROSSING



2. DANIELS PKWY. & I-75 EXIT 131



3. GULF COAST TOWN CENTER



LOCATION MAP



LOCATION HIGHLIGHTS

- 0.5± miles to I-75
- 2± miles to Jet Blue Park
- 3± miles to SWFL International Airport (RSW)
- 5.5± miles to US-41
- 6± miles to SR-82
- 9± miles to Cape Coral
- 10± miles to Downtown Fort Myers





LSI
COMPANIES
LSICOMPANIES.COM

LIMITATIONS AND DISCLAIMERS

The content and condition of the property provided herein is to the best knowledge of the Seller. This disclosure is not a warranty of any kind; any information contained within this proposal is limited to information to which the Seller has knowledge. Information in this presentation is gathered from reliable sources, and is deemed accurate, however any information, drawings, photos, site plans, maps or other exhibits where they are in conflict or confusion with the exhibits attached to an forthcoming purchase and sale agreement, that agreement shall prevail. It is not intended to be a substitute for any inspections or professional advice the Buyer may wish to obtain. An independent, professional inspection is encouraged and may be helpful to verify the condition of the property. The Seller and LSI Companies disclaim any responsibility for any liability, loss or risk that may be claimed or incurred as a consequence of using this information. Buyer to hold any and all person's involved in the proposal of the property to be held harmless and keep them exonerated from all loss, damage, liability or expense occasioned or claimed. Potential Buyer acknowledges that all property information, terms and conditions of this proposal are to be kept confidential, and concur that either the Potential Buyer, nor their agents, affiliates or attorneys will reveal this information to, or discuss with, any third parties. Buyer will be a qualified and with significant experience and be willing to be interviewed by the LSI Companies team.