



MAYSVILLE CENTER

10150 MAYSVILLE RD, FORT WAYNE, INDIANA 46835

PROPERTY HIGHLIGHTS

- 1,509 SF retail space for lease
- Space consists of large open area, one office and one restroom
- Adjacent to Chapel Ridge Shopping Center that includes national retailers such as Walmart, Kohls and Petsmart
- Excellent demographics - surrounded by retail and rooftops
- Traffic count on Maysville Road is 16,908 VPD



200 E. Main Street, Suite 580
Fort Wayne, IN 46802
260.422.2150 (o)
260.422.2169 (f)

RACHEL ROMARY
Broker
rromary@naihb.com
260.341.0230

General Property Information			
Name	Maysville Center	Parcel Number	02-08-24-402-004.004-072
Address	10150 Maysville Road	Total Building SF	13,920 SF
City, State, Zip	Fort Wayne, IN 46835	Acreage	1.55 AC
County	Allen	Year Built	2019
Township	St. Joseph	Zoning	SC
Parking	Asphalt surface	Parking Spaces	49

Property Features			
Construction	Masonry	# of Floors	1
Roof	Flat	Restrooms	1
Heating	Yes	Central Air	Yes
Signage	Building	Traffic Counts	16,908 VPD

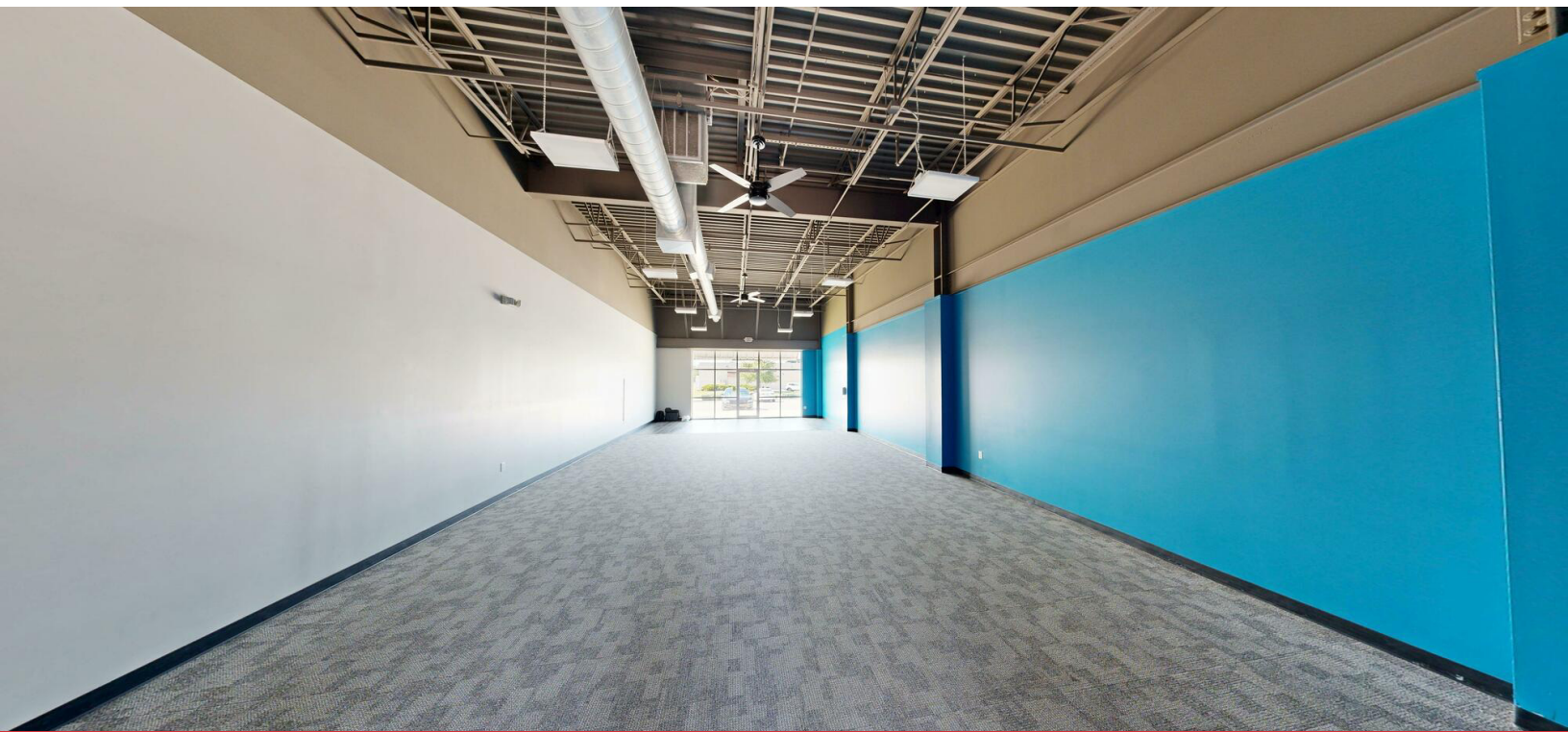
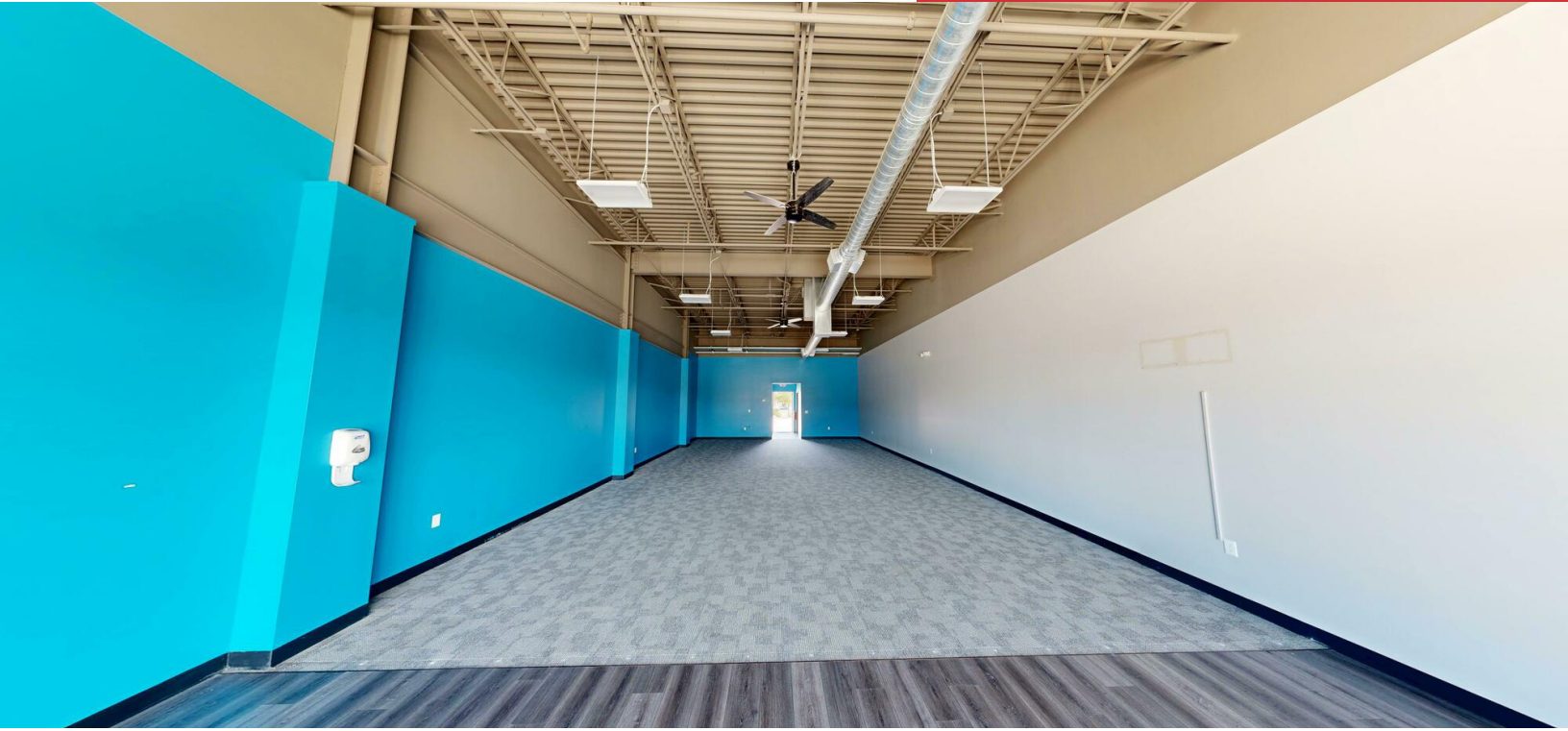
Utilities		Nearest Major Roads	
Electric	I&M	Interstate	I – 469
Gas	Nipsco	Distance	0.5 Miles
Water	City of Fort Wayne		
Sewer	City of Fort Wayne		

Lease Information			
Unit	SF	Lease Rate	
10152	1.509 SF	Negotiable	

Expenses			
Type	Price/SF (Estimate)	Responsible Party (Landlord/Tenant)	
Taxes	\$4.49/SF	Tenant	
CAM	\$1.45/SF	Tenant	
Insurance	\$0.30/SF	Tenant	
Maint/Repairs		Tenant	
Roof/Structure		Landlord	
Utilities		Tenant	
Total Expenses	\$6.24/SF		

200 E. Main Street, Suite 580
 Fort Wayne, IN 46802
 260.422.2150 (o)
 260.422.2169 (f)

RACHEL ROMARY
 Broker
 rromary@naihb.com
 260.341.0230



200 E. Main Street, Suite 580
Fort Wayne, IN 46802
260.422.2150 (o)
260.422.2169 (f)

RACHEL ROMARY
Broker
rromary@naih.com
260.341.0230



Matterport Property Report:

Maysville Center - Unit 10150

Gross Floor Area - Full Property 1,506 sq. ft. | Floor 1 1,506 sq. ft.

Sizes and dimensions are approximate, actual may vary

Visit 3D space on
 Matterport



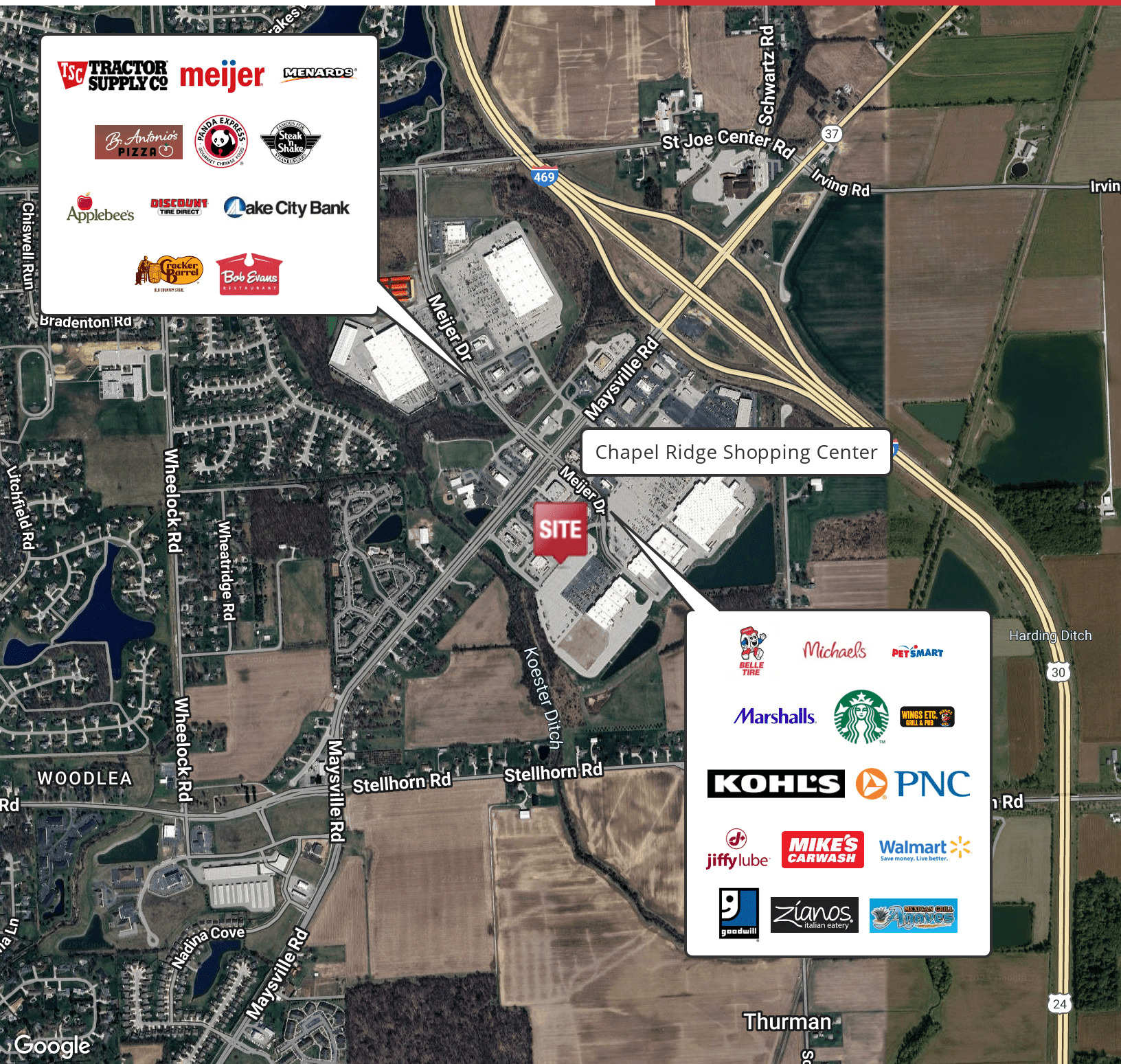
200 E. Main Street, Suite 580
Fort Wayne, IN 46802
260.422.2150 (o)
260.422.2169 (f)

RACHEL ROMARY
Broker
rromary@naih.com
260.341.0230



200 E. Main Street, Suite 580
Fort Wayne, IN 46802
260.422.2150 (o)
260.422.2169 (f)

RACHEL ROMARY
Broker
rromary@naihb.com
260.341.0230

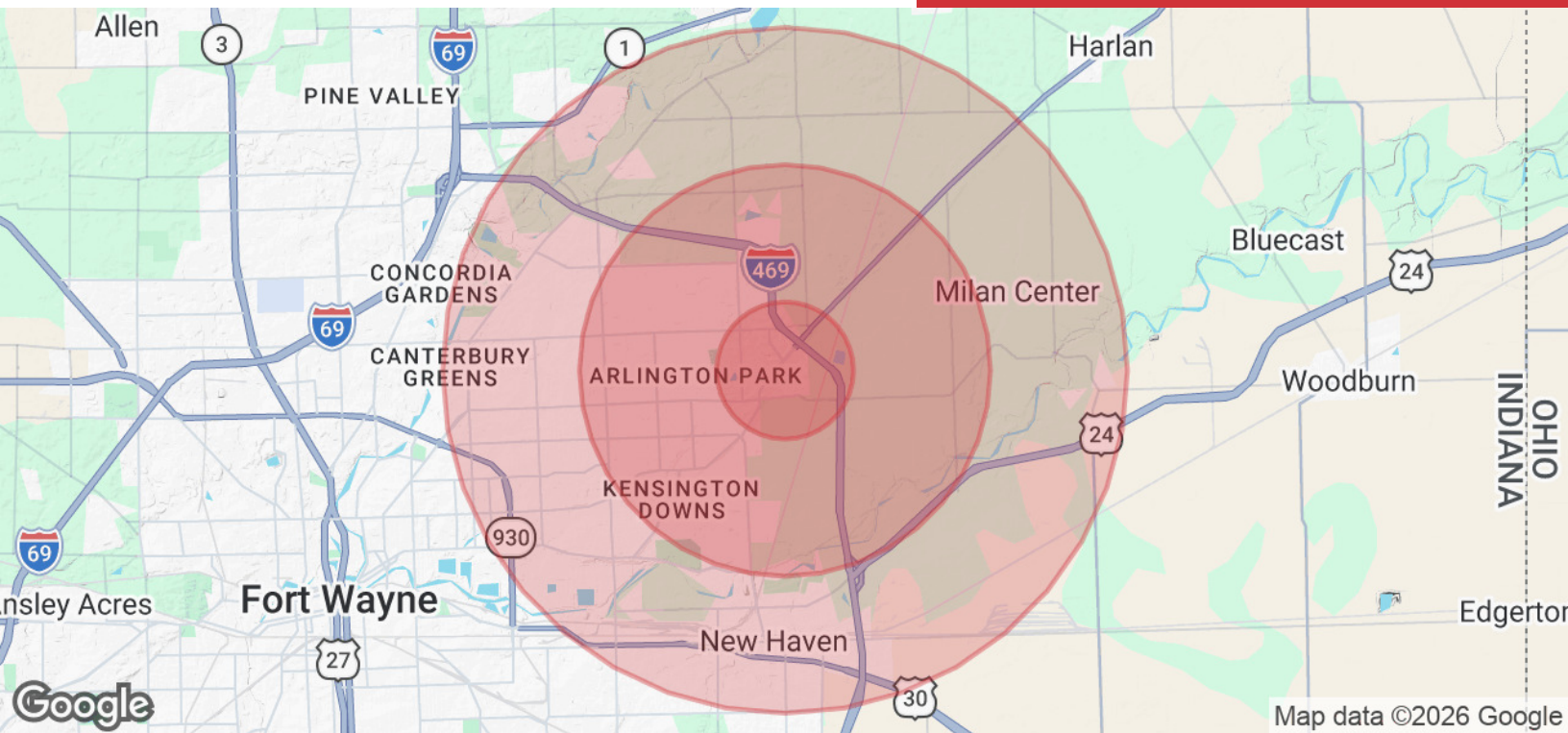


Chapel Ridge Shopping Center

SITE

200 E. Main Street, Suite 580
 Fort Wayne, IN 46802
 260.422.2150 (o)
 260.422.2169 (f)

RACHEL ROMARY
 Broker
 rromary@naihb.com
 260.341.0230



POPULATION

	1 MILE	3 MILES	5 MILES
Total Population	2,872	34,001	81,117
Average Age	42	41	40
Average Age (Male)	41	40	38
Average Age (Female)	43	42	41

HOUSEHOLDS & INCOME

	1 MILE	3 MILES	5 MILES
Total Households	1,194	13,358	32,440
# of Persons per HH	2.4	2.5	2.5
Average HH Income	\$108,548	\$101,909	\$91,630
Average House Value	\$282,551	\$241,476	\$230,117

Demographics data derived from AlphaMap

200 E. Main Street, Suite 580
Fort Wayne, IN 46802
260.422.2150 (o)
260.422.2169 (f)

RACHEL ROMARY
Broker
rromary@naih.com
260.341.0230