

AVAILABLE FOR LEASE

3605 Woodhead Drive, Unit 111
Northbrook, IL 60062



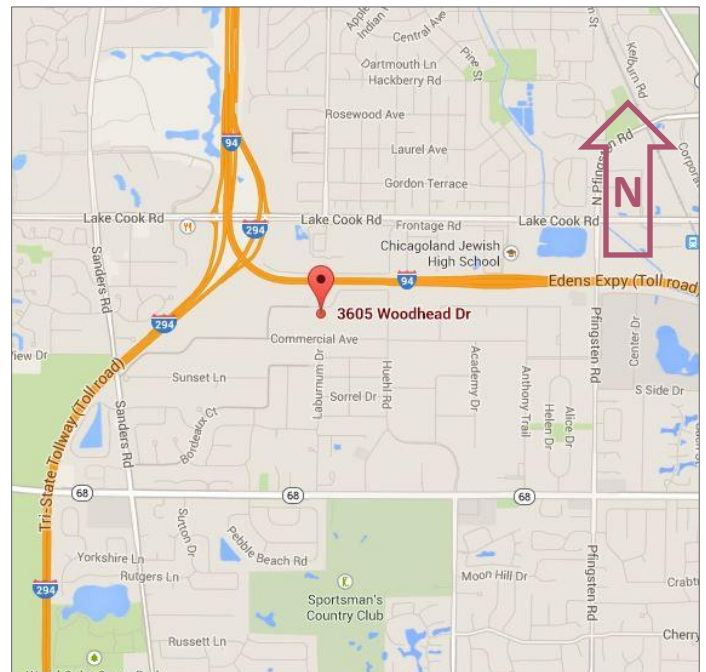
1,095 SF

OFFICE SPACE

\$14.00 PSF

Modified Gross

- Available in Sky Harbor Business Park.
- Large general office area, 3 private offices and 2 storage closets.
- AT&T Fiber now installed in building.
- Plenty of parking, 24-hour access, dog-friendly building.
- Common area washrooms and lunchroom.
- Professionally managed by Key Investment & Management Inc.



**KEY INVESTMENT
& Management Inc.**

Office: 630.932.5757
Fax: 630.932.5755
1263 S. Highland Ave., Suite 2W,
Lombard, IL 60148
www.key-investment.com

FOR FURTHER INFORMATION CONTACT:

Kimberly Hess
Office: 630.932.5757
khess@key-investment.com

Real Estate

Brokerage

Leasing

Management

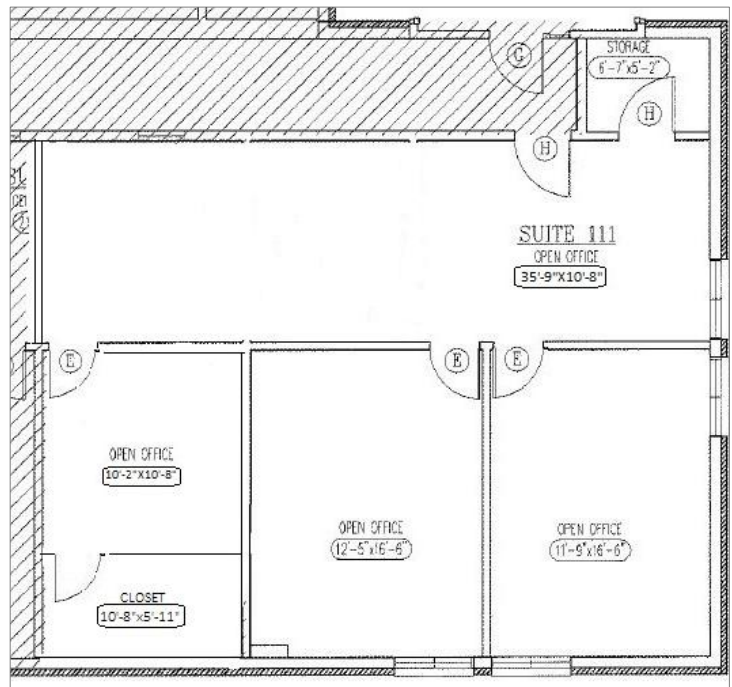
3605 Woodhead Drive, Unit 111
Northbrook, IL 60062

1263 S. Highland Ave, Suite 2W
Lombard, IL 60148
Office: 630.932.5757 Fax: 630.932.5755
www.key-investment.com
Kimberly Hess
khess@key-investment.com



AVAILABLE FOR LEASE

| PROPERTY SPECIFICATIONS | |
|-------------------------|--|
| Building Size: | 21,070 |
| Available Space: | 1,095 SF |
| Year Built: | 1972 |
| Zoning: | C3 |
| Parking: | Open Lot |
| Ceiling Height: | 10' |
| Power: | 200 AMP |
| Washrooms: | 2-Common Area |
| Sprinklered: | No |
| Utilities: | Prorated Gas & Electric |
| Real Estate Taxes: | Included |
| CAM: | Included |
| Possession: | Immediately |
| Lease Term: | Minimum 2 years |
| Lease Rate: | \$14.00 PSF MG \$1,277.50 Per Month |



All dimensions are approximate. Drawing not to scale.



4/14/2026

Real Estate

Brokerage

Leasing

Management