

FOR LEASE
14,400 SF INDUSTRIAL SPACE

4605 L B McLEOD
ORLANDO, FLORIDA 32811



**14,400 SF
AVAILABLE**

L B McLEOD



14,400 SF WAREHOUSE
3,153 SF OFFICE



2 DOCK HIGH DOORS
& EXCEPTIONAL FRONTAGE



2,400-AMPS, 240-VOLTS
3-PHASE POWER



AMPLE
EMPLOYEE PARKING



20' WAREHOUSE
CLEAR HEIGHT

**LEASING
CONTACTS**

BOBBY ISOLA, SIOR, CCIM
(M) 407-930-1804
BOBBY.ISOLA@JLL.COM

KRISTIN GRIFFIN
(M) 407-739-8285
KRISTIN.GRIFFIN@JLL.COM

MATTHEW HALPIN
(M) 407-709-4788
MATTHEW.HALPIN@JLL.COM



FOR LEASE

14,400 SF INDUSTRIAL SPACE

4605 L B McLEOD

ORLANDO, FLORIDA 32811

SPACE FOR LEASE | INFORMATION

- 14,400 SF FOR LEASE
- 3,153 SF OFFICE
- 20' CLEAR HEIGHT
- INTERIOR MAKE READY (*PLANNED*)
- TWO (2) LOADING DOCK DOORS WITH BUMPERS
- 2,400 AMPs, 240V, 3-PHASE POWER
- 60' X 40' COLUMN SPACING
- 140' WAREHOUSE DEPTH
- NEW TPO ROOF INSTALLATION (2024)
- 100' CONCRETE TRUCK COURT
- 5" CONCRETE FLOOR SLAB
- AMPLE EMPLOYEE PARKING SPACES
- STANDARD WET PIPE SPRINKLER SYSTEM
- *AVAILABLE DECEMBER 2026*



LEASING CONTACTS:

BOBBY ISOLA, SIOR, CCIM
407-930-1804
BOBBY.ISOLA@JLL.COM

KRISTIN GRIFFIN
407-739-8285
KRISTIN.GRIFFIN@JLL.COM

MATTHEW HALPIN
407-709-4788
MATTHEW.HALPIN@JLL.COM

MANAGED BY:



MARKETED BY:

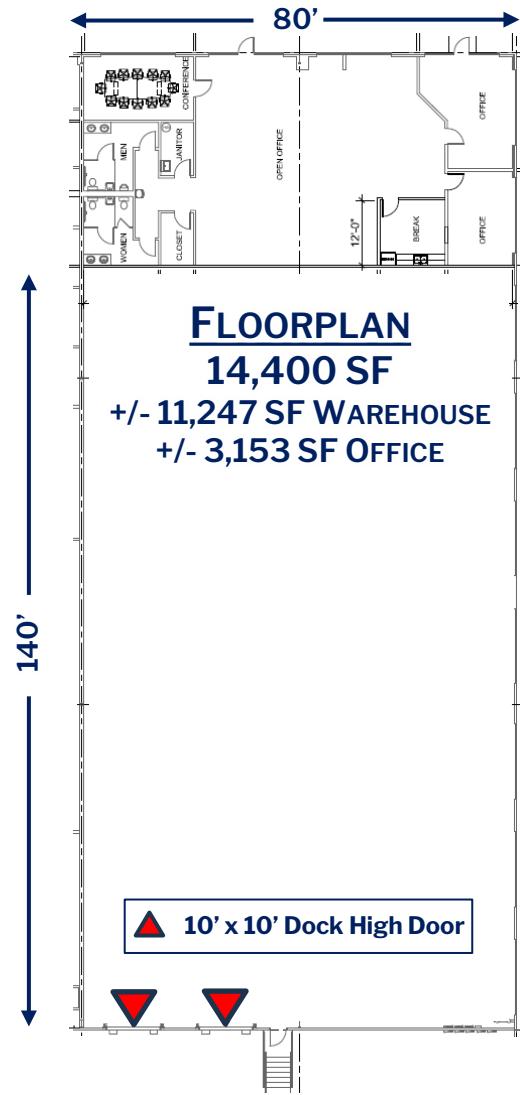


FOR LEASE

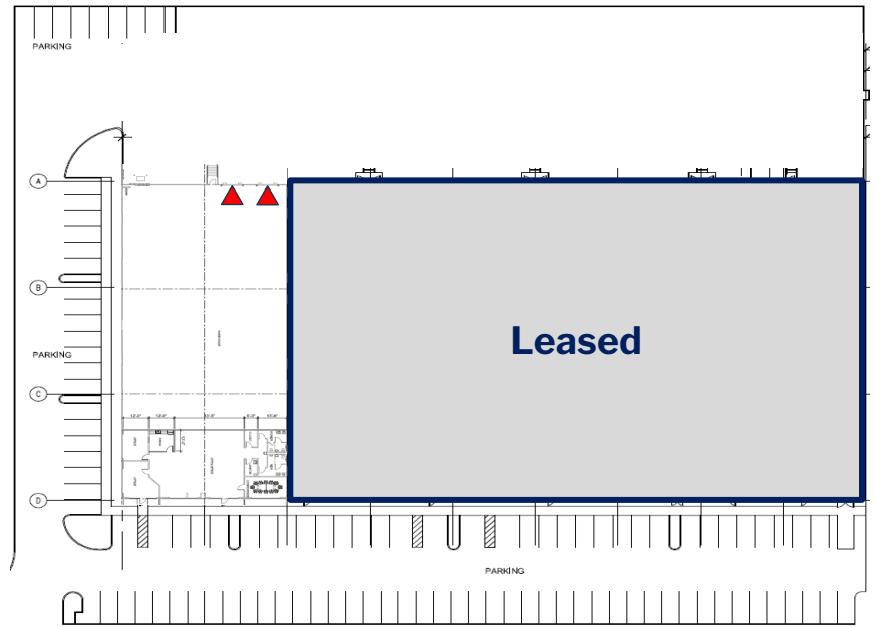
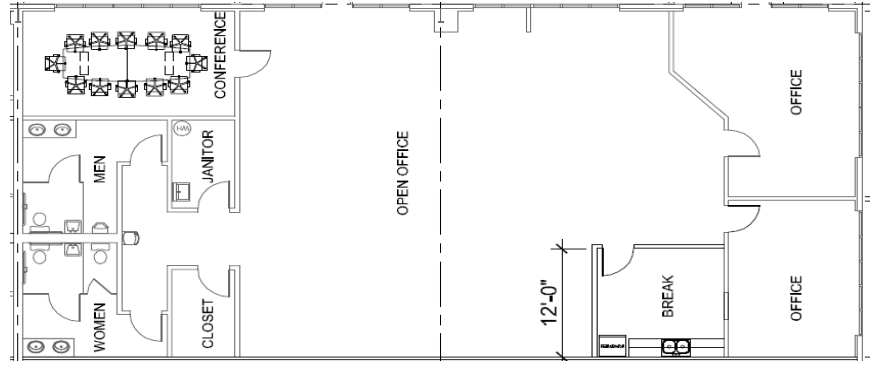
14,400 SF INDUSTRIAL SPACE

4605 L B McLEOD

ORLANDO, FLORIDA 32811



OFFICE FLOORPLAN



FOR LEASE
14,400 SF INDUSTRIAL SPACE

4605 L B McLEOD
ORLANDO, FLORIDA 32811



14,400 SF
AVAILABLE

LEASING
CONTACTS

BOBBY ISOLA, SIOR, CCIM
(M) 407-930-1804
BOBBY.ISOLA@JLL.COM

KRISTIN GRIFFIN
(M) 407-739-8285
KRISTIN.GRIFFIN@JLL.COM

MATTHEW HALPIN
(M) 407-709-4788
MATTHEW.HALPIN@JLL.COM

 **Stonelake**
CAPITAL PARTNERS

 **JLL**

FOR LEASE
14,400 SF INDUSTRIAL SPACE

4605 L B McLEOD
ORLANDO, FLORIDA 32811

DOWNTOWN ORLANDO

14,400 SF
AVAILABLE

LB McLEOD

LEASING
CONTACTS

BOBBY ISOLA, SIOR, CCIM
(M) 407-930-1804
BOBBY.ISOLA@JLL.COM

KRISTIN GRIFFIN
(M) 407-739-8285
KRISTIN.GRIFFIN@JLL.COM

MATTHEW HALPIN
(M) 407-709-4788
MATTHEW.HALPIN@JLL.COM

 **Stonelake**
CAPITAL PARTNERS

 **JLL**

FOR LEASE
14,400 SF INDUSTRIAL SPACE

4605 L B McLEOD
ORLANDO, FLORIDA 32811

DOWNTOWN ORLANDO



**LEASING
CONTACTS**

BOBBY ISOLA, SIOR, CCIM
(M) 407-930-1804
BOBBY.ISOLA@JLL.COM

KRISTIN GRIFFIN
(M) 407-739-8285
KRISTIN.GRIFFIN@JLL.COM

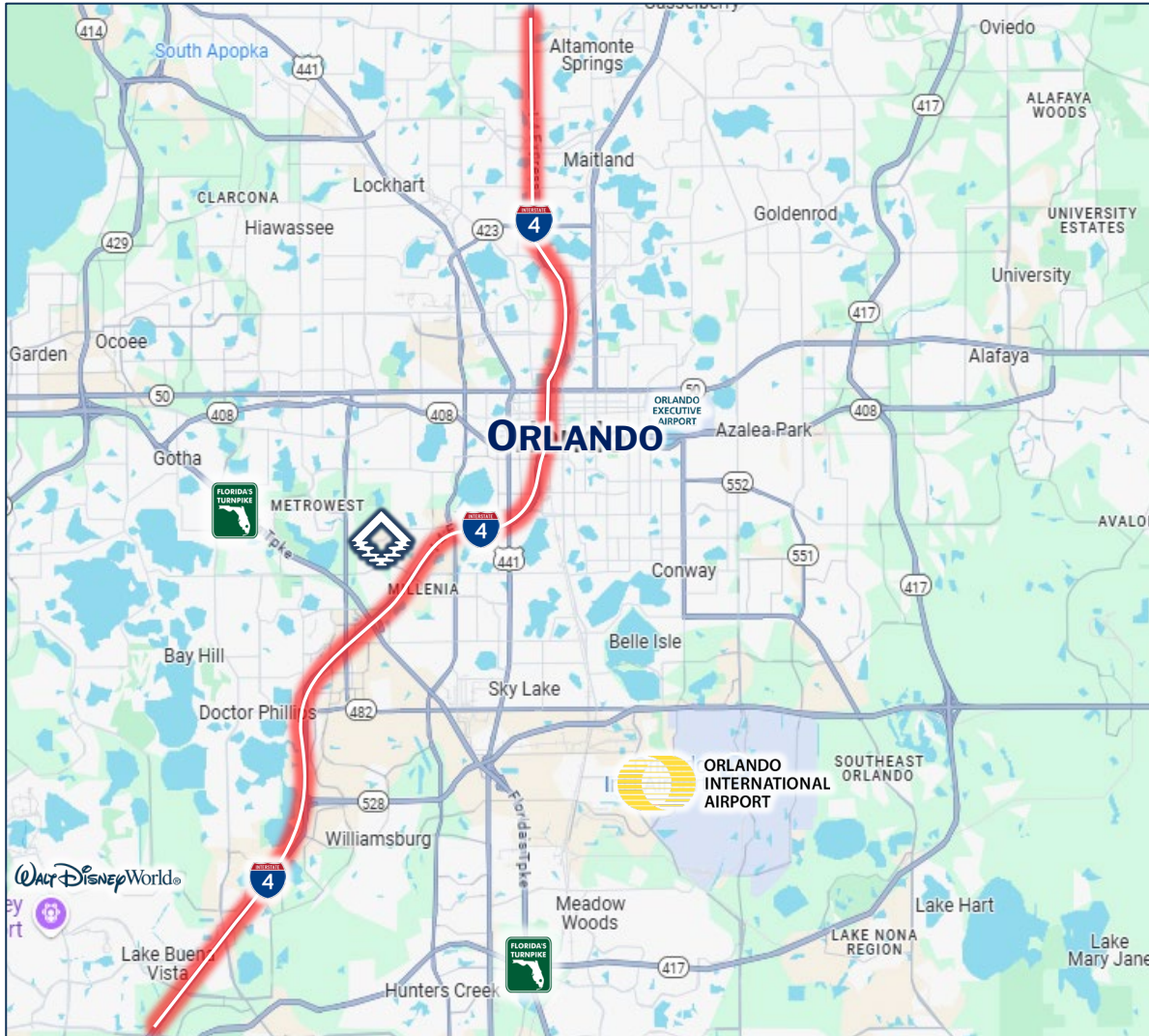
MATTHEW HALPIN
(M) 407-709-4788
MATTHEW.HALPIN@JLL.COM

 **Stonelake**
CAPITAL PARTNERS

 **JLL**

FOR LEASE
14,400 SF INDUSTRIAL SPACE

4605 L B McLEOD
ORLANDO, FLORIDA 32811



MARKETED BY:

BOBBY ISOLA, SIOR, CCIM
407-930-1804
BOBBY.ISOLA@JLL.COM

KRISTIN GRIFFIN
407-739-8285
KRISTIN.GRIFFIN@JLL.COM

MATTHEW HALPIN
407-709-4788
MATTHEW.HALPIN@JLL.COM

14,400 SF AVAILABLE
DECEMBER 2026

ORLANDO, FLORIDA
33RD STREET SUBMARKET

