

MEDICAL OFFICE SPACE FOR LEASE

8925 N MERIDIAN STREET

Indianapolis, IN 46260

FOR MORE INFORMATION, CONTACT:

MIKE SHORT

Vice President
317.853.7502
Mike@alopg.com



PROPERTY SUMMARY

[VIEW WEBSITE](#)

For Lease | 8925 N Meridian Street, Indianapolis, IN 46260



LOCATION DESCRIPTION

Positioned along the highly desirable North Meridian Street corridor in Indianapolis, 8925 N Meridian St benefits from easy connectivity to I-465 and Downtown Indianapolis. Surrounded by an array of dining, retail, medical, and hospitality amenities, the location supports a strong professional environment with nearby access to major employers and affluent residential communities. Its central Northside positioning, strong visibility, and accessibility make it an attractive opportunity for a variety of office, medical, or professional users.

PROPERTY HIGHLIGHTS

- Medical Office Space with First Floor Lobby Exposure
- Suitable for Healthcare and Professional Office Users
- Prominent North Meridian Street Address
- Close Proximity to Restaurants and Nearby Amenities
- Easy Access to I-465 and Downtown Indianapolis

OFFERING SUMMARY

| | |
|----------------|------------------------------|
| Lease Rate: | \$22.50 SF/yr (Full Service) |
| Available SF: | 3,554 SF |
| Building Size: | 25,000 SF |

| DEMOGRAPHICS | 1 MILE | 3 MILES | 5 MILES |
|-------------------|-----------|----------|----------|
| Total Households | 2,284 | 24,196 | 71,182 |
| Total Population | 5,187 | 54,891 | 162,807 |
| Average HH Income | \$113,101 | \$93,748 | \$87,974 |

MIKE SHORT

Vice President
Mike@alopg.com
C: 317.800.4664

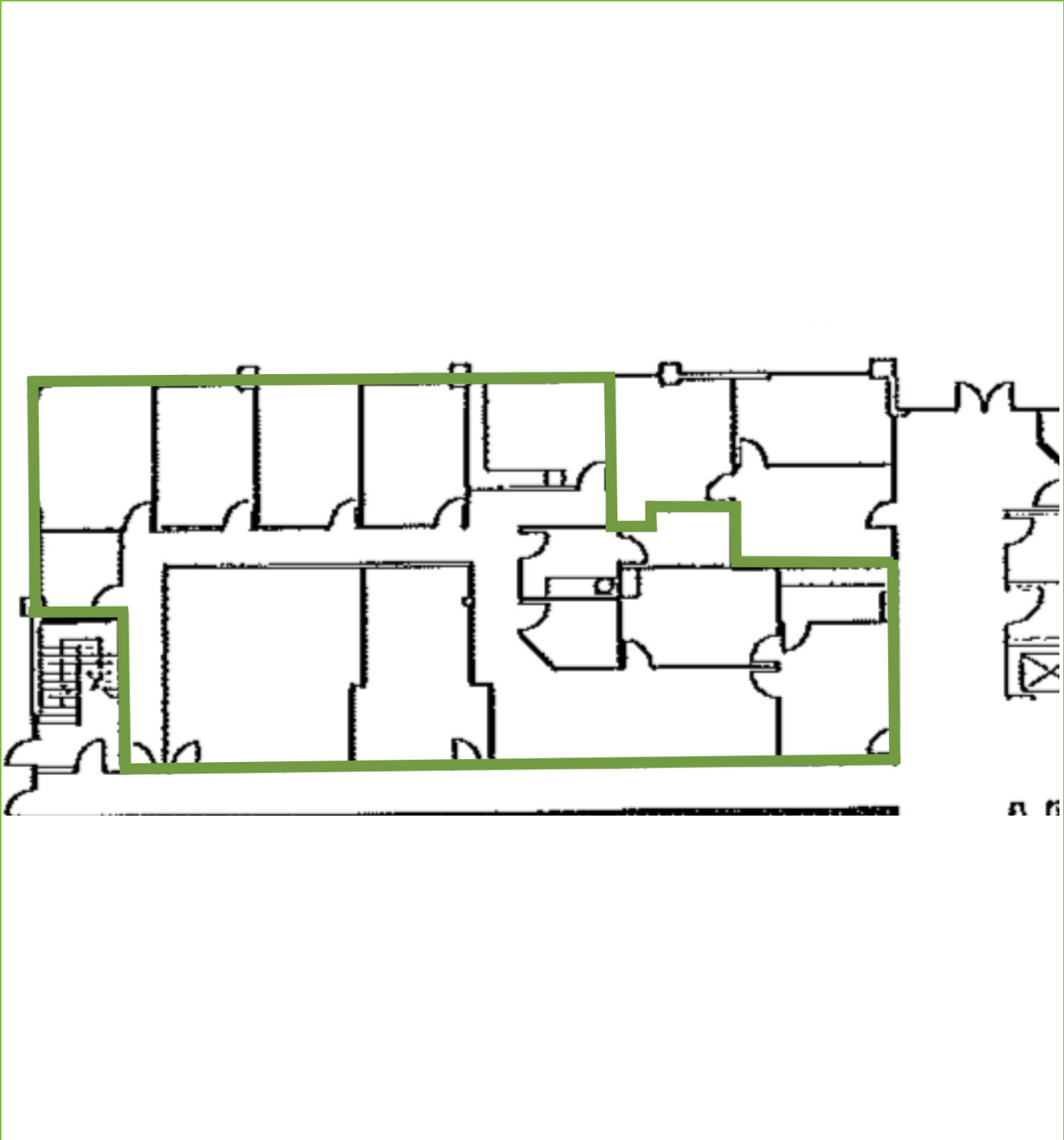
ALO Property Group
9075 N. Meridian St., Ste. 175
Indianapolis, IN 46260
317.853.7500
www.alopg.com



Although all information furnished regarding property for sale, rental, or financing is from sources deemed reliable, such information has not been verified and no express representation is made nor is any to be implied as to the accuracy thereof. It is submitted subject to errors, omissions, changes of price, rental, or other conditions, prior sale, lease, or financing, or withdrawal without notice, and to any special conditions imposed by our principal.

FLOOR PLAN

For Lease | 8925 N Meridian Street, Indianapolis, IN 46260



MIKE SHORT
Vice President
Mike@alopg.com
C: 317.800.4664

ALO Property Group
9075 N. Meridian St., Ste. 175
Indianapolis, IN 46260
317.853.7500
www.alopg.com



Although all information furnished regarding property for sale, rental, or financing is from sources deemed reliable, such information has not been verified and no express representation is made nor is any to be implied as to the accuracy thereof. It is submitted subject to errors, omissions, changes of price, rental, or other conditions, prior sale, lease, or financing, or withdrawal without notice, and to any special conditions imposed by our principal.

EXTERIOR PHOTOS

For Lease | 8925 N Meridian Street, Indianapolis, IN 46260



MIKE SHORT
Vice President
Mike@alopg.com
C: 317.800.4664

ALO Property Group
9075 N. Meridian St., Ste. 175
Indianapolis, IN 46260
317.853.7500
www.alopg.com



Although all information furnished regarding property for sale, rental, or financing is from sources deemed reliable, such information has not been verified and no express representation is made nor is any to be implied as to the accuracy thereof. It is submitted subject to errors, omissions, changes of price, rental, or other conditions, prior sale, lease, or financing, or withdrawal without notice, and to any special conditions imposed by our principal.

LOCATION MAP

For Lease | 8925 N Meridian Street, Indianapolis, IN 46260



MIKE SHORT

Vice President
Mike@alopg.com
C: 317.800.4664

ALO Property Group
9075 N. Meridian St., Ste. 175
Indianapolis, IN 46260
317.853.7500
www.alopg.com



Although all information furnished regarding property for sale, rental, or financing is from sources deemed reliable, such information has not been verified and no express representation is made nor is any to be implied as to the accuracy thereof. It is submitted subject to errors, omissions, changes of price, rental, or other conditions, prior sale, lease, or financing, or withdrawal without notice, and to any special conditions imposed by our principal.