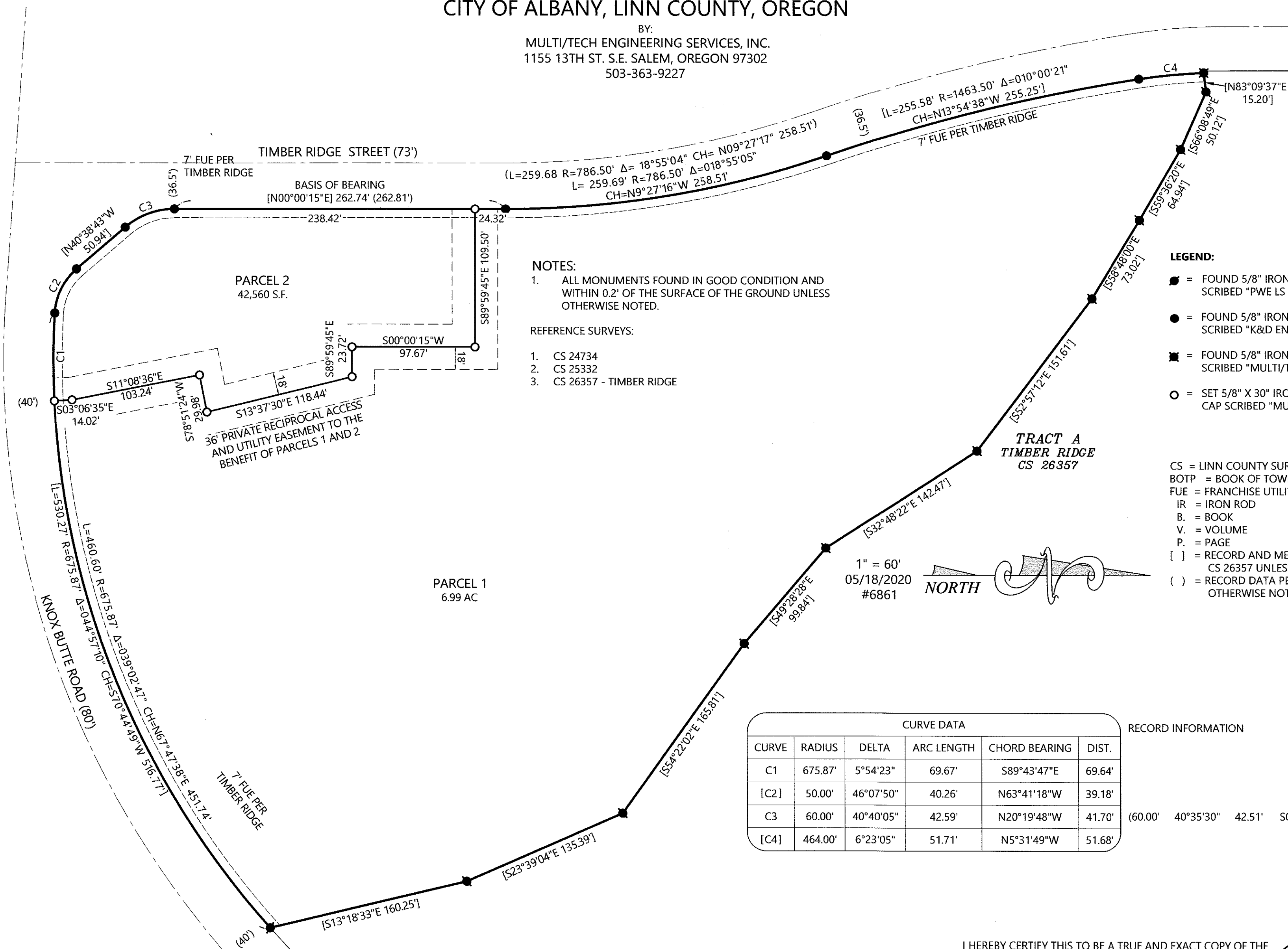


PARTITION PLAT 2020- 52
 FOR TIMBER KNOX DEVELOPMENT
 A REPLAT OF LOT 3, TIMBER RIDGE
 IN THE NW 1/4 SEC., 03 T. 11 S., R. 3 W., W.M.
 CITY OF ALBANY, LINN COUNTY, OREGON

C.S. 26904

BY:
 MULTI/TECH ENGINEERING SERVICES, INC.
 1155 13TH ST. S.E. SALEM, OREGON 97302
 503-363-9227



- NOTES:**
 1. ALL MONUMENTS FOUND IN GOOD CONDITION AND WITHIN 0.2' OF THE SURFACE OF THE GROUND UNLESS OTHERWISE NOTED.
- REFERENCE SURVEYS:**
 1. CS 24734
 2. CS 25332
 3. CS 26357 - TIMBER RIDGE

- LEGEND:**
- = FOUND 5/8" IRON ROD WITH YELLOW PLASTIC CAP SCRIBED "PWE LS 2688" PER CS 24734
 - = FOUND 5/8" IRON ROD WITH YELLOW PLASTIC CAP SCRIBED "K&D ENGR LS 78508" PER CS 25332
 - = FOUND 5/8" IRON ROD WITH YELLOW PLASTIC CAP SCRIBED "MULTI/TECH ENG" PER CS 26357
 - = SET 5/8" X 30" IRON ROD WITH YELLOW PLASTIC CAP SCRIBED "MULTI/TECH ENG."

CS = LINN COUNTY SURVEY RECORD
 BOTP = BOOK OF TOWN PLATS
 FUE = FRANCHISE UTILITY EASEMENT
 IR = IRON ROD
 B. = BOOK
 V. = VOLUME
 P. = PAGE
 [] = RECORD AND MEASURED DATA PER CS 26357 UNLESS OTHERWISE NOTED
 () = RECORD DATA PER CS 26357 UNLESS OTHERWISE NOTED



CURVE DATA					
CURVE	RADIUS	DELTA	ARC LENGTH	CHORD BEARING	DIST.
C1	675.87'	5°54'23"	69.67'	S89°43'47"E	69.64'
[C2]	50.00'	46°07'50"	40.26'	N63°41'18"W	39.18'
C3	60.00'	40°40'05"	42.59'	N20°19'48"W	41.70'
[C4]	464.00'	6°23'05"	51.71'	N5°31'49"W	51.68'

RECORD INFORMATION
 (60.00' 40°35'30" 42.51' S02°21'32"E 41.62)

I HEREBY CERTIFY THIS TO BE A TRUE AND EXACT COPY OF THE ORIGINAL PLAT

Robert D. Hamman
 ROBERT D. HAMMAN

REGISTERED
 PROFESSIONAL
 LAND SURVEYOR

Robert D. Hamman

OREGON
 JULY 13, 2004
 ROBERT D. HAMMAN
 64202LS

EXPIRES: 6-30-2021