

For  
Sale



415 East Main St.  
Laurel, MT 59044

THE OUTLOOK BUILDING | 2,518 SF

Lease Price

**\$650,000**

Monthly + Utilities | 12-Month Lease

### Property Highlights

- **±2,518 SF** retail or office space
- Situated on an 11,700 SF lot
- Zoned CBD (Central Business District)
- Flexible open-concept layout ideal for a variety of business uses
- Space Features
  - Large storefront windows providing abundant natural light
  - Open floor plan
  - Private office and dedicated storage area
  - HVAC with air conditioning
  - With ample electrical outlets
  - Private restroom



FOR DETAILS:

**SHAYLEE GREEN, CCIM**

📞 406 208 7723

✉️ shayleegreenCCIM@outlook.com

FOR LEASE



Property Address

**415 East Main St.  
Laurel, MT 59044**

### Location Highlights

- Off-street parking available
- Additional on-street parking along Main Street
- Excellent visibility and exposure along a high-traffic corridor
- Bright LED Lighting throughout
- New roof



FOR DETAILS:

**SHAYLEE GREEN, CCIM**

406 208 7723

shayleegreenCCIM@outlook.com

FOR LEASE




## Interior Highlights



FOR DETAILS:

**SHAYLEE GREEN, CCIM**

 406 208 7723

 [shayleegreenCCIM@outlook.com](mailto:shayleegreenCCIM@outlook.com)

FOR LEASE




## Interior Highlights



FOR DETAILS:

**SHAYLEE GREEN, CCIM**

 406 208 7723

 shayleegreenCCIM@outlook.com

FOR LEASE



## Interior Highlights



FOR DETAILS:

**SHAYLEE GREEN, CCIM**

📞 406 208 7723

✉️ [shayleegreenCCIM@outlook.com](mailto:shayleegreenCCIM@outlook.com)

FOR LEASE




## Interior Highlights



FOR DETAILS:

**SHAYLEE GREEN, CCIM**

 406 208 7723

 shayleegreenCCIM@outlook.com

FOR LEASE




## Interior Highlights



FOR DETAILS:

**SHAYLEE GREEN, CCIM**

 406 208 7723

 shayleegreenCCIM@outlook.com

FOR LEASE



## Interior Highlights

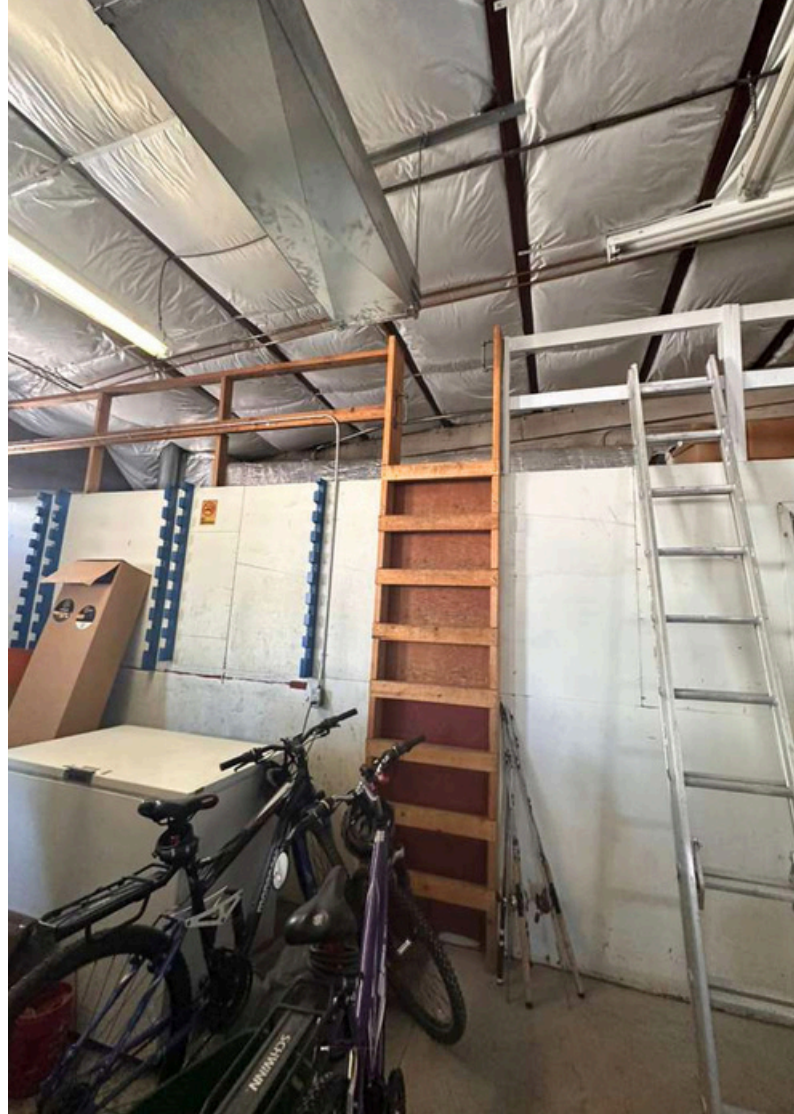


FOR DETAILS:  
**SHAYLEE GREEN, CCIM**

📞 406 208 7723

✉️ [shayleegreenCCIM@outlook.com](mailto:shayleegreenCCIM@outlook.com)

FOR LEASE



## Interior Highlights



FOR DETAILS:

**SHAYLEE GREEN, CCIM**

📞 406 208 7723

✉️ [shayleegreenCCIM@outlook.com](mailto:shayleegreenCCIM@outlook.com)

FOR LEASE



Interior Highlights



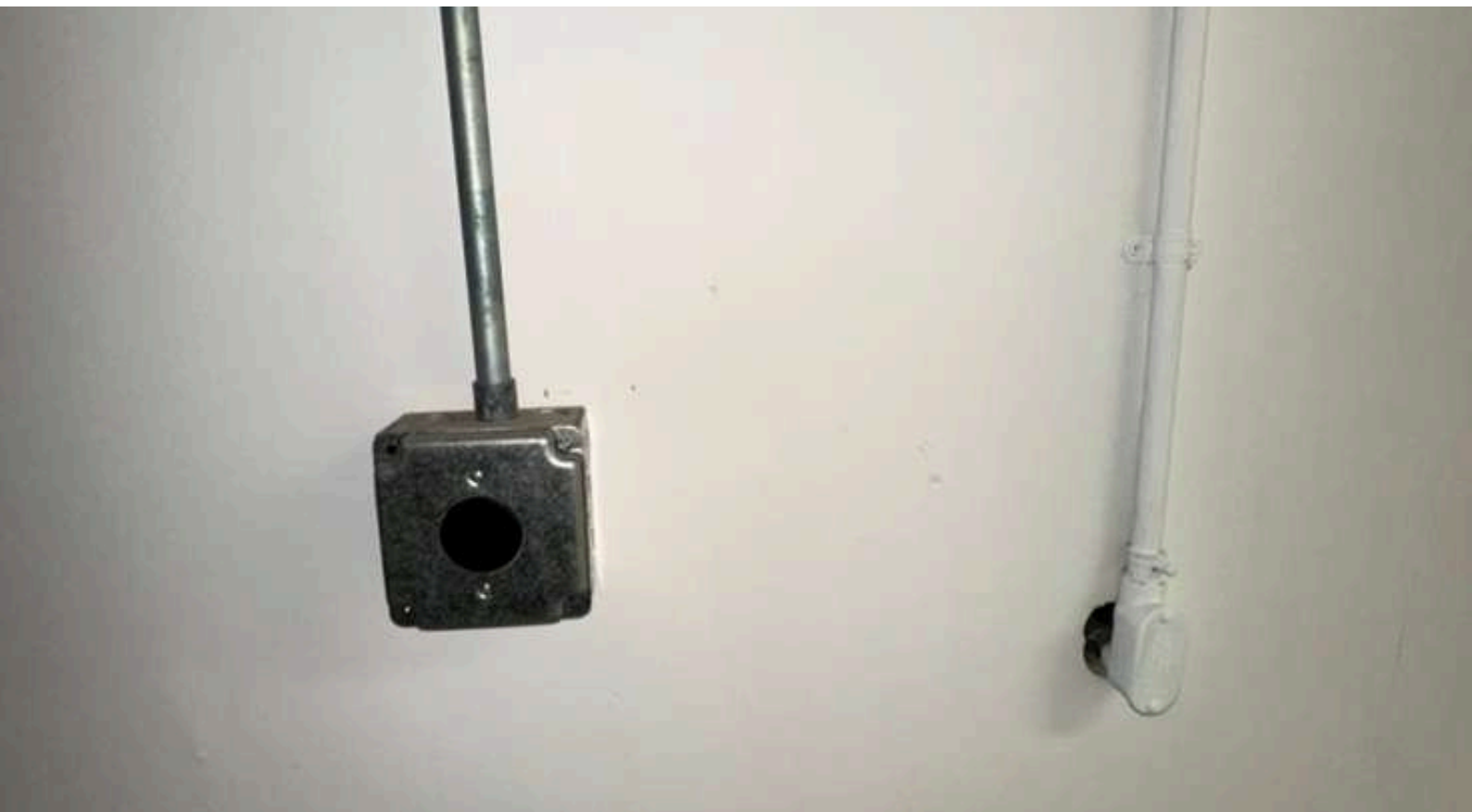
FOR DETAILS:  
**SHAYLEE GREEN, CCIM**  
📞 406 208 7723  
✉️ shayleegreenCCIM@outlook.com

A circular profile picture of a woman with long brown hair, wearing a grey blazer over a white top.

FOR LEASE




## Interior Highlights



FOR DETAILS:

**SHAYLEE GREEN, CCIM**

 406 208 7723

 shayleegreenCCIM@outlook.com



# SHAYLEE GREEN, CCIM

Broker / Owner

📞 406-208-7723

✉️ shayleegreenCCIM@outlook.com

## Professional Background

Shaylee grew up in Billings, Montana, where she developed a strong connection to the community and the outdoor lifestyle the state offers. Outside of work, she enjoys kayaking, rafting, snowboarding, riding dirt bikes, and camping with her five beautiful and adventurous children.

Since beginning her real estate career in 2017, Shaylee has completed over 200 commercial real estate transactions, specializing in investment-grade and income-producing properties. She gained early experience within a nationally recognized brokerage at Coldwell Banker Commercial for 6+ years. This was formative for her overall professional experience.

Shaylee has earned the Certified Commercial Investment Member (CCIM) designation, one of the industry's most respected credentials. This designation reflects Shaylee's advanced training in investment analysis, financial modeling, and market strategy, enabling her to help clients minimize risk, and maximize long-term returns.

Today, Shaylee is the founder and broker of 5Pillars Realty, a boutique commercial real estate brokerage that offers clients direct access to the owner and decision-maker throughout every stage of the transaction. This approach allows for more personalized service, strategic guidance, and responsive communication. She typically manages 16–20 active listings for sale or lease, representing investors, property owners, and businesses across the region.

Outside of real estate, Shaylee is passionate about giving back and actively supports volunteer initiatives serving single mothers, veterans, nursing homes, disaster relief efforts, and communities in developing countries.

## Education

Shaylee is a nationally licensed Realtor, Supervising Broker, and Certified Commercial Investment Member (CCIM) designee, a designation often regarded as the equivalent of a master's-level education in commercial investment analysis.

She studied Theology at Yellowstone Christian College, earning an A.A. in Christian Studies with a minor in Humanities, and later continued her studies in Elementary Education at MSU in Billings.

Her educational background, combined with extensive industry experience and professional credentials, supports a thoughtful, relationship-driven approach to helping clients navigate complex commercial real estate decisions.

## Notable transactions and clients:

- Accumulated \$26,000,000 +/- in total sales
- Accumulated 1,907,200 SF leased retail, office, and industrial
- Billings Athletic Club: \$1,000,000 sale
- \$3.5 Million: 80+ Bed Assisted Living Portfolio
- Whalen Tire: \$1,165,000 sale - 1 AC - 20,000 SF
- 1640 Lockwood: \$1,000,000 - 10,080 SF - 2 AC
- 23 Unit Multifamily portfolio
- Mobile home parks - 7+ Sales
- Land sales: 3-5 parcels yearly average, including recreational or commercial subdivisions
- Estate sales with 6+ family members - 6 transactions
- Major Clients: Phillips 66, Brand Safeway, Lavish Salon Studios, Magic City Casino, 777 Fitness,, Thrivent Financial, Polar Services, Mountain Mudd
- Businesses sold: Montana Beauty Institute, Rae Rae's Bakery, Reliable Water Services, Ember and Indigo, Brookstone Monument, J-Wash Carwash,

“ I work hard so I can be generous, as others have been generous to me. ”  
- Shaylee Green

